

The Northwest

BIOECONOMY HUB



CAIRDE CILL ULTA



**Cill
Ulta**
Áitiúil • Blasta • Úr

www.cillulta.ie

Cill Ulta

Falcarragh

074 91 80994

Registered Charity Number: 16554

TABLE OF CONTENTS

- **Overview of Cill Ulta**
- **Cill Ulta & Collaborators**
- **Cairde Cill Ulta - Friends of Cill Ulta**
- **The Northwest Bioeconomy Hub Project**
- **Benefits to Supporting the Northwest Bioeconomy Hub Project**
- **Organisational Chart**
- **The Board of Directors & Steering Committee**
- **The Team at Cill Ulta**
- **Preab San Úir**
- **Expert Advisory Group**
- **Achievements to Date**
- **RRDF - Rural Regeneration Development Fund**
- **DTIF - Disruptive Technologies Innovation Fund**
- **Objectives of the DTIF**
- **The Northwest Bioeconomy Hub Layers**
- **Membership Details**
- **Membership Form**
- **Friends of Cill Ulta to Date**
- **Letters of Endorsements**



Overview of cill ulla

Lárionad Acmhainní Nádúrtha (LAN CTR) operating as Cill uita), is a community owned and social enterprise. The project has charitable status and aims to be a force for good, with values focused on sustainability, circular economy and tackling climate change through economic development, community development and cultural and linguistic preservation. We are passionate about promoting Irish solutions to the challenges of climate change and developing climate action measures in agriculture, promoting biodiversity with a focus on social inclusion, ecological degradation, agricultural import dependency; as well as the cultural, linguistic and population decline in the Gaeltacht. Specifically, Cill Ulta is dedicated to reviving the economic and cultural resilience of our community by promoting ecological awareness, biological agriculture and horticulture, through regenerative farming methods and practices, sustainable energies, building equal opportunities and the development of a bio based circular economy.

The center is situated on 13 acres of land located at Cill Ulta (Killult), between An Fál Carrach (Falcarragh) and Gort an Choirce (Gortahork) in the heart of the Cloich Cheann Fhaola (Cloughaneely) Gaeltacht. It is located in Northwest Donegal on the N56 route approximately 45km from Letterkenny, along the Wild Atlantic Way. With a catchment population of over 4,000 people. The Centre which began in the 1960's as a tomato growing enterprise supplying the Dublin early markets.

The new company comprises of:

- 1 acre of glasshouse
- 7 commercial Polytunnels
- 2 testing Polytunnels
- A range of arable fields
- An apiary
- A comprehensive Vegetable packing facility
- An extensive rainwater harvesting and demonstration site

The Glasshouses as it is known locally, is run by Cill Ulta as a horticulture project which uses organic pesticide free methods to produce high quality fruit, vegetables and herbs, made available to the local community through shops, restaurants, a box scheme, and plant sales. Plans are in place to expand the product range by growing oats, rye and blueberries. This will enable Cill Ulta to supply the many new brewing and distillery businesses that have opened up in the locality. Cill Ulta also provides training opportunities to the public through the Education Training Board TÚS Schemes and to young people through its Preab San Úir project.

The center is located in an extremely high nature value region, in a Special Protection Area (Corn Crane) and adjacent to a Special Area of Conservation (grey whorled snail), the site is ideally situated to tackle cultural, agricultural, and ecological decline, with important data extrapolation potential to wider Irish and European regions. The long-term ambition is to build on the expansion of Cill Ulta and add to employment and advanced training needs in this area.

Climate Change is having a devastating impact on our economy, society and environment and will continue to do so into the future. As the threats from Climate Change increase, so does the need for urgent action to address them. This involves cutting greenhouse gas emissions by at least 30%, reaching a target of at least 32.5% energy efficiency and delivering 70% renewable electricity to name but a few.

Here in Cill Ulta, we also recognize the need to act in order to alleviate the effects of climate change in the local community which is why we concentrate on areas such as carbon sequestration, climate resilient food systems, sustainable land use, biodiversity, water use efficiency, community awareness and inclusion. Our previous climate action projects were focused on Better Energy Community Projects, the carbon reduction of the LAN site, carbon sequestration and climate adaption measures such as flood alleviation and prevention, and biodiversity.

Cill Ulta continues to build on the social, economic, environmental and cultural successes to date through the Northwest Bioeconomy Hub project.



Cill Ulta & Collaborators

Cill Ulta is collaborating with E-Crop, E-Seed, SeqBiome and Origin Enterprise on the Northwest Bioeconomy Hub project which will develop a novel disruptive microbial technology industry in Ireland. This project was developed to exploit microbes that can be naturally found in the environment and to create novel tools to ensure sustainability of crop production. The project will develop solutions to the unprecedented challenges that we are facing in relation to our ability to produce crops to feed the growing demand of plant protein and to reduce our reliance of chemicals in agriculture to ensure the sustainability of our ecosystems and our soil health. Over the next decade under the EU Green Deal, we will be required to reduce our use of fertilizer by 25% and reduce our use of chemicals used to control diseases and pests by 50%.

- E-Crop is a University College Dublin spin-out which will develop high throughput tools that assess microbial diversity in soils and plants as a bioindicator of their health and develop microbial formulations that can be applied to crops in order to improve productivity, disease and abiotic stress resistance. The partners in E-Crop are supported by Trinity College Dublin.
- E-Seed is a Trinity College Dublin and University College Dublin Ag-Science spin-out with expertise in the isolation and identification of microbes from wild relatives of crops and the formulation of applicable products for assessment and commercial validation in agricultural systems.
- SeqBiome are a start-up SME spun out from the globally recognised centres of microbiome excellence: APC Microbiome Ireland, Teagasc and University College Cork. They provide high-quality and interactive sequencing and microbiome analysis for academia and industry on a worldwide stage. Their expertise is in the genomic analysis of complex microbiome samples and the development of bioindicator tests.
- Origin Enterprise is a major European Supplier of Agricultural Seeds and one of the largest Agronomic Advisors in the UK. They have a strong market presence and penetration particularly in the UK and Eastern Europe. University College Dublin and E-Seed have worked closely with Origin Enterprises over the last two years to conduct major field trials on barley in their targeted counties. As market leaders, they offer advice on market requirements and optimal product strategy. They have guided parts of our market strategy and are therefore important partners both in the past and into the future.

Cairde Cill Ulta - Friends of Cill Ulta

Cairde Chill Ulta (Friends of Cill Ulta) is being established as a support group to assist in the operation of the Cill Ulta project as a beneficial resource for the community and the green economy sector in general. Memberships of Cairde Cill Ulta will enable individuals to contribute financially to the project at Cill Ulta, and as a registered charity and community not for profit charity. These contributors will enable Cill Ulta to achieve its Community and Environmental missions. It will enable contributors to assist and support in this exciting project and their social corporate responsibility whilst offsetting and achieving greater strength and efforts to climate and sustainability.



The Northwest Bioeconomy Hub Project

Cill Ulta and the Collaborators have identified the opportunity for a transformative and strategically important rural regeneration project, the Northwest Bioeconomy Hub 'the Hub', to strengthen and develop the growing bioeconomy sector in the Northwest of Ireland. Through colocation, the Hub will lever the substantial assets of the existing Cill Ulta horticulture and sustainability centre.

The Hub will have facilities to analyse various test beds, biofertilizers and methods that are regenerative and biological in terms of improving soil and plant health. This aligns appropriately with our European Innovation Programme where we have introduced the knowledge and tools to local farmers, to enhance soil health and utilize abandoned land parcels. Conveniently located within the Northwest, the Hub's facilities will enable and encourage networking opportunities and collaborations for future projects.

The Hub will provide modern facilities on a c.950 m sq area within the current Cill Ulta Center and will offer:

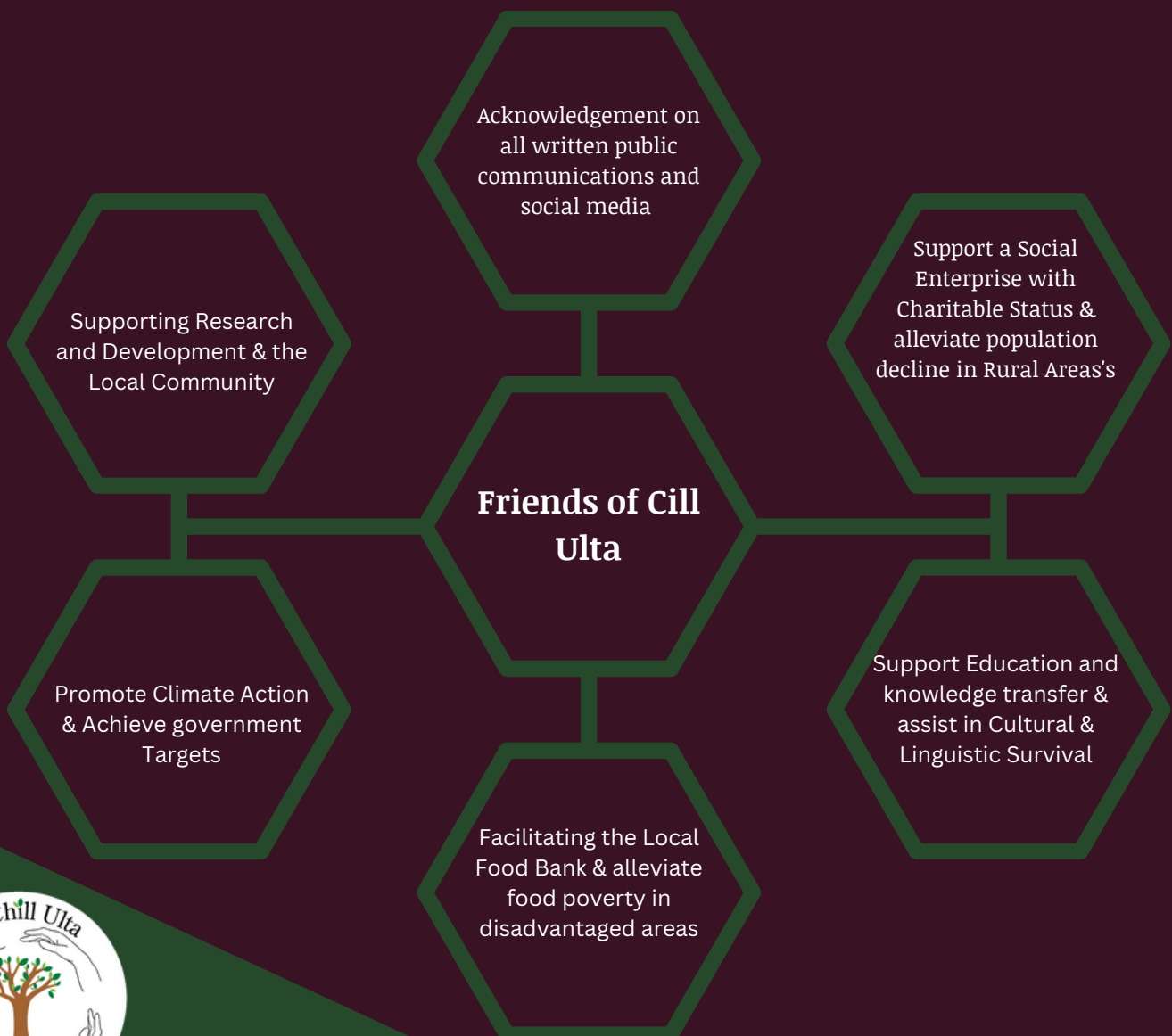
- Enterprise units: The facility will include 10 individual enterprise units to support the work of ten SMEs aligned with the focus of the Hub.
- Shared technical innovation and lab facilities - Shared technical lab units relevant to SMEs and remote researchers within the bioeconomy space and will include a preparatory laboratory room (with sinks, autoclaves), a microbial culture room (with shaking and static culture facilities), and a plant culture room (that includes hydroponics and speed breeding facilities).
- Education and meeting facilities: - The facility will include 3 meeting/collaboration rooms with capacity of 50 seats, 20 seats and 10 seats equipped with AV facilities. These rooms will provide space for tenants and member SMEs to meet, access bespoke educational programmes, and to host events pertinent to the hub or their activities.
- Member's hub:- Recognising the importance of integrating all regional bioeconomy interests within the hub, this shared facility will be a critical space wherein they can meet, share ideas and use as a base while accessing the other facilities of the hub. This facility will include a combination of office desk and lounge seating, equipped with the facilities necessary for remote working. 100 members will benefit over a three-year period.
- Catering and ancillary facilities:- This will cater for the tenants and hub members, but also for the wider community and local events. A zero-food waste model will apply.
- Bioeconomy Corridor:- Development and expansion of the Northwest bioeconomy corridor which will support producers and supply chains. The corridor will also seek to leverage the facilitation of academic research from UCD, Sligo IT- Connaught Ulster Technical University Alliance and Teagasc for remote based postgraduate job opportunities and strategic placements.
- Cross border engagement:- Through the work of UCD, the development of the Hub will result in the development of a new All-Island Food Integrity Initiative and the Plant Innovation Hub. The former aims to support the development of the Irish Agri-Food Sector, increasing the integration of plant-based agri-systems in Irish farms and farm productions. The latter provides a platform for the development of new plant-based research initiatives, including a cross-border initiative focused on increasing the diversity of crops and crop and microbial-based foods produced on the Island. UCD recognise the Hub as a strategic development to support their goals in development of innovative rural employment around crops and crop products in the Northwest region.



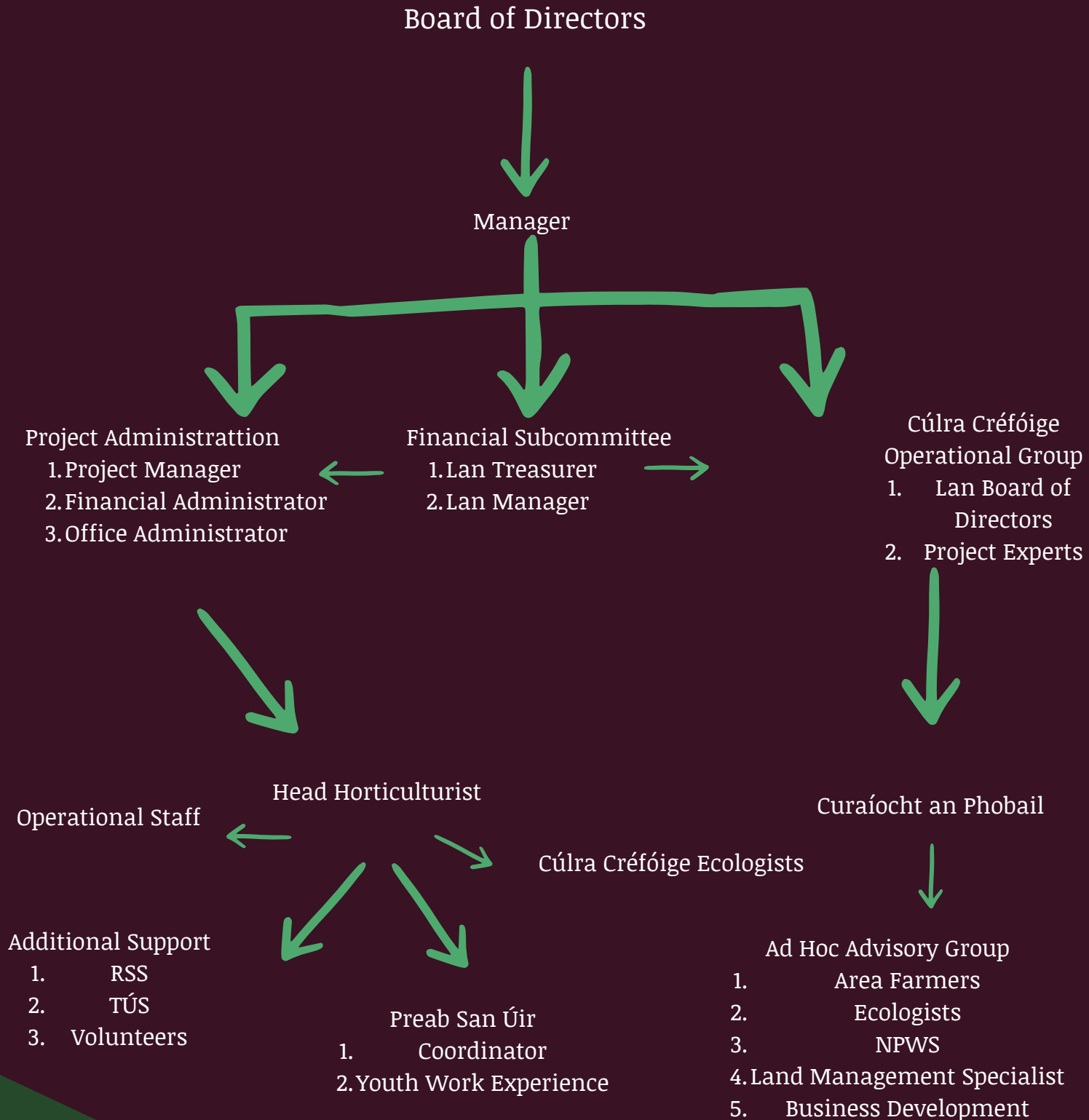
The key targets for the HUB within 3 years:

- Provide state of the art workspaces and collaboration facilities.
- Provide a 100% sustainable building.
- Create 60 new direct jobs in 20+ new and growing tenant businesses and 90 indirect jobs in the wider region.
- Develop 50 new /improved product innovations.
- Support 8 tenant businesses to export for the first time or enter a new market.
- Enable 100-member businesses to participate in training, workspaces, networking, collaborations.
- Allow 100 bioeconomy industry entrepreneurs/learners to benefit from our knowledge center activities.
- Permit 60 researchers to embed their projects in the Hub and form linkages with the local business community.
- Enable 60 interns to be facilitated to work in member businesses and advance their careers

Benefits to Supporting the Northwest Bioeconomy Hub Project



Cill Ulta Organisational Chart



Board of Directors & Steering Committee

**Bearaí Ó Gallchóir
Cathaoileach**

Eithne Nic Lochlainn

Mairéad Nic an Iomaire

Thomas McClafferty

John Cannon

Pádraic McClafferty

Larry McCurry



The Team at Cill Ulta

Project Administrator Group

Eithne Nic Lochlainn
Mairéad Nic an Iomaire

Financial Sub Committee

Cordelia Nic Fhearraigh
Róisín Mhic Aoidh

Cúlra Créfoige

Operational Group

Máire Nic Fhearraigh
Veronika Mc Nulty

Head Horticulturist

Cúlra Créfoige Ecologists

Veronika Mc Nulty

Curaíochta an Phobal

Róisín Mhic Aoidh

Ad hoc Advisory Group

Eoin Gallagher (on contract)

Operational Staff

7.5 operational staff under
the Community Service Programme

Additional Support

RSS
TÚS
Volunteer workers

Preab San Úir

Coordinator & 10 young people
aged between 14-17 in conjunction
with Údarás na Gaeltachta and
An Pleanáil Teange



TD Charlie Mc Conalogue with Staff and the Board
of Directors of Lárionad Acmhainní Nádúrtha LAN
CTR (operating as Cill Ulta)

Preab San Úir 2022



Preab San Úir Participants that represented the region at the (AER) Assembly of European Regions Summer Academy which took place in the Gaeltacht region of County Donegal



PREAB SAN
ÚR



Expert Advisory Group

Professor Fiona Doohan



Fiona started Microbiology at University College Dublin and Plant Pathology at John Innes Centre (PhD, 1998). After a postdoc at John Innes, she moved to UCD where she was appointed Lecturer in Molecular Plant Pathology. In 2014, she was appointed as Associate Professor. Has led various UCD and National Scientific Developments, including a national doctoral training program on Earth and Natural Sciences. Her “favourite” disease is Fusarium head blight of wheat, closely followed by Septoria tritici blotch of wheat. Her team are focused on identifying genes that facilitate disease resistance breeding, endophytes that enhance plant disease resistance and technologies that facilitate genetic engineering of plants. Previously led the CEREALPATH ENT training program and is currently the scientific coordinator of the H2020 project Innovation and lead of the European Regional Development Funded project HealthyOats.

Mícheál Ó hEanaigh

Michael Heaney (Micheál Ó hÉanaigh) has extensive experience in and has operated in leadership and senior management roles in the statutory, local government, local development, and community and cultural sectors.

Most recently, Michael completed a term as CEO of Údarás na Gaeltachta, the Irish state agency with responsibility for the economic, social and cultural development of Ireland’s Irish-speaking regions. Prior to that, Michael spent sixteen years as Director of Planning, Economic Development, Cultural Services and Community Services with Donegal County Council. He has extensive experience in regional development (including cross-border and transnational projects), strategic planning, project implementation, enterprise and inward investment, capacity-building, sustainability, and in the community, cultural and arts sectors. He has been responsible for planning for, and implementation of, a range of strategic projects in sectors such as the green economy, the blue economy, the creative economy, tourism and diaspora engagement. At present, Michael holds the position of Vice-President of the Assembly of European Regions (AER), with specific responsibility for tourism, culture and youth.

Currently on the Board of various projects, Cooperative Housing Ireland, Irish College Leuven, Asia Matters and Donegal Tourism.



Brendan Kearney

Brendan is one of the members of our EIP (European Innovation Partnership Programme) OG and provides on going advise and support to its roll out. He has been acting in an advisory capacity with the company since 2004. Brendan is the Executive Director of Brendan Kearney and Associates, providing consultancy in agricultural economics and rural development policy. He is the former Deputy Director of An Foras Talúntais (The Agriculture Institute) and head of its Rural Economy Research Centre until 1989. Responsibilities included Planning, controlling and directing the research programme in policy analysis, production economic, marketing and rural development.



Sainghrúpa Comairleach

Lorcán Ó Tuathailh



Lorcán is has been acting in an advisory role to Cill Ulta since 2017 and was instrumental in supporting the company in realising the EIP, Cúlra Créafóige, in 2019. He is a member of the EIP OG and provides on going advise to its roll out. Lorcán works with the Irish Golden Eagle Trust, managing the Golden Eagle reintroduction project in Glenveagh National Park and works closely with the NPWS.

He has over 25 years' experience of integrated fieldwork and stakeholder engagement projects across Europe including Ireland, Sweden, Germany, Norway, Wales and Scotland. He has also worked as:- General manager of all GET projects including re-introduction of red kite, white-tailed eagle; Irish national hen harrier surveys 2010; expert in various research techniques for raptors; Conservation ranger with Dúchas; Rockabill Island Tern Warden for Irish Wildbird Conservancy; provided expertise and support to NPWS for implementation of corncrake management plan; Production of SPA technical report and conservation management plan; Contributed to the development of the red grouse species action plan and engaged with NARGC red grouse committee.

Lorcán has a unique understanding of the relevant societal, cultural and environmental backdrops to the importance of rural economies, people, practices and conservation of species and habitats particularly in Donegal.

Finbarr Bradley

Over the past decade, Finbarr has courses on green ventures at both University College Dublin and Trinity College Dublin. He has been a professor of finance at Dublin City University where he was also founding director of the Irish-medium Centre, Fiontar.

He was a professor at Maynooth University and a visiting professor at, among others, the University of Michigan, Vienna University of Economics & Business, Copenhagen Business School and Aalto University, Finland. He has authored or co-authored several books including Digging Deeper: How Purpose-Driven Enterprises Create Real Value (2017), The Irish Edge: How Enterprises Compete on Authenticity and Place (2013), and Capitalising on Culture, Competing on Difference (2008). He began his career as an engineer working with GE in the US and South Korea. He has an electrical engineering degree from University College Cork and a PhD in international finance from the Stern School of Business, New York University (NYU).



Achievements to Date

- Glasshouse Retrofit: renovation of the 1-acre glasshouse using recycled materials from a decommissioned glasshouse from the Netherlands.
- Rainwater Harvest System: utilizing 2 on-site rainwater catchment reservoirs and a particle filtration/UV sterilization system. Cill Ulta provides 100% of watering needs.
- Packaging transitioned to 100% compostable packaging materials for all our sustainable primary produce grown on site, hand harvested and sold in the shops, restaurants and through Cloich Cheann Fhaola Food Hub.
- Soil Creation/Enrichment: developing robust, high OM soils on site through application of compost made on-site from production waste and community-supplied manure. We are working with local companies to test any by-products from companies in the locality that we can use to enhance the soil health of the area and where we grow.
- Local Vegetable Sale: supplying 8 shops, restaurants and +/- 100 households with local, pesticide-free, sustainably-produced vegetables and herbs available weekly from March – December.
- Vegetable Plant Sales: providing affordable, chemical-free vegetable/herb seedlings, essential horticulture supplies and gardening advice through an annual Spring Plant Sale Day/s, this in turn encourages community members to come in on-site and see the work that we do and be more involved with other members of the community.
- Food Hub: donating on a regular basis vegetables and herbs to the local Pandemic Relief Food Hub led by the Cloich Cheann Fhaola Mental Health Association, supporting vulnerable families within the community.
- Preab San Úir – facilitating cross generational knowledge transfer focused on sustainable horticulture, biodiversity, agriculture, language, culture and heritage. This is creating a space for youth engagement to gain valuable experience and knowledge in sustainable cultivation practices whilst also earning a wage throughout the summer holidays. This experience and knowledge can be transferred in their education going forward as well as creating a raise a generational interest in food security.
- Cúlra Créafóige (EIP-AGRI): supporting economic viability and agricultural & agricultural sustainability by rejuvenating the sustainable cultivation of abandoned lands in upland and disadvantaged farm regions (accumulating 12 acres years and a target of 60 acres through the 5 years of the European Innovation Programme).
- Curaíocht an Phobail (EIP-AGRI): promoting a robust, resilient, economically viable agriculture industry in the Northwest Donegal which champions sustainable practices and methods and complies with emerging climate/ environmental Legislations and Directives.
- Training/Employment: presenting a diverse range of workshops/employment on biodiversity, conservation, sustainable food production, food sovereignty, traditional craft and heritage supported by the ETB and Údarás na Gaeltachta.
- Sustainable Energy Production Demonstration Site: developing a demonstration site for Solar PV to provide electricity to main building, zero carbon embodied multipurpose relaxation room for Mental Health Ireland clients and family members, carers. We have an application in with Donegal County Council at the moment to fund a sensory garden to coincide with the relation space. Within this sensory garden we will have an anaerobic digester to fuel a biogas stove. The feedstock for the anaerobic digester will be supplied by community members as well as organic matter from the polytunnels and glasshouses on-site. This is a circular economy concept that can be achieved anywhere and will act as a demonstration site for various renewables.
- Biochar: we are currently investigating the installation of a bio-char facility on-site to capture carbon from waste plant and cardboard produced by Cill Ulta and community businesses (i.e. fruit/vegetable waste from local shops and restaurants). Cill Ulta is in the process of testing the biochar as an additive with compost to examine its nutritional value in terms of fertilizers. We will then act an advisory panel to the company that produces the Biochar.



RRDF - Rural Regeneration and Development Fund

The RRDF Category 2 fund is operated by the Department of Rural and Community Development for rural renewal projects in towns and villages with populations under 10,000. Category 2 projects are strategic, large scale projects which at the early development stage which require further investment to be in a position to commence works which will then allow them to apply for Category 1 status under the RRDF. As these projects must involve a partnership between Government Departments, State or Public agencies, local authorities and communities and can also involve philanthropic funders and/or the private sector. The application was handled by Údarás na Gaeltachta, in conjunction with Cill Ulta.

RRDF aims to target investment to ensure balanced regional growth. Cill Ulta is the project location which is owned by Údarás na Gaeltachta which will provide state of the art facilities and create sustainable employment opportunities and careers in a rural area and in the bioeconomy sectors, whilst revitalising the overall townland. This fund is essential to strengthen and develop the growing bioeconomy sector in the northwest of Ireland. This project has secured €196,120 RRDF and will leverage the substantial asset of the existing horticulture and sustainability site at Cill Ulta

DTIF – Disruptive Technologies Innovation Fund

DTIF is a fund set up under the National Development Plan (NDP) 2018 – 2027. It is managed by the Department of Enterprise, Trade and Employment and administered by Enterprise Ireland. The DTIF is seeking investment in the development and deployment of disruptive innovation technologies, on a commercial basis, targeted at tackling national and global challenges. The fund is driving collaboration between our world class research base and industry as well as facilitating enterprises to compete directly for funding in support of the development and adoption of these technologies and seeding a new wave of start-ups. Enterprise Ireland define Disruptive technologies as that which has the potential to drastically alter markets and their functioning and significantly alter the way that businesses operate. It is not about technology alone but the combination of technology with business model innovation.



Objectives of the DTIF

- Support enterprises in Ireland to exploit the enterprise opportunities associated with “disruptive technologies” by de-risking collaborative projects
- Support enterprises in Ireland to collaborate in order to engage with and be prepared for challenges associated with new “disruptive technologies” that will have a transformative impact on the way we work and live in the future
- Build on research undertaken in Ireland and to leverage that research further by supporting the delivery and exploitation of new technology-based
- Foster deeper and wider RD&I collaborations between the public and private sectors in key technology areas and, in particular, to support collaborations between large firms and SMEs in Ireland
- Strengthen spin-out, spin-in and other start-up activity associated with disruptive technology
- Prepare Irish enterprises and public bodies to engage in European and global partnerships around the development and deployment of disruptive technologies
- Promote innovation and drive collaboration between Ireland’s enterprises and its research base

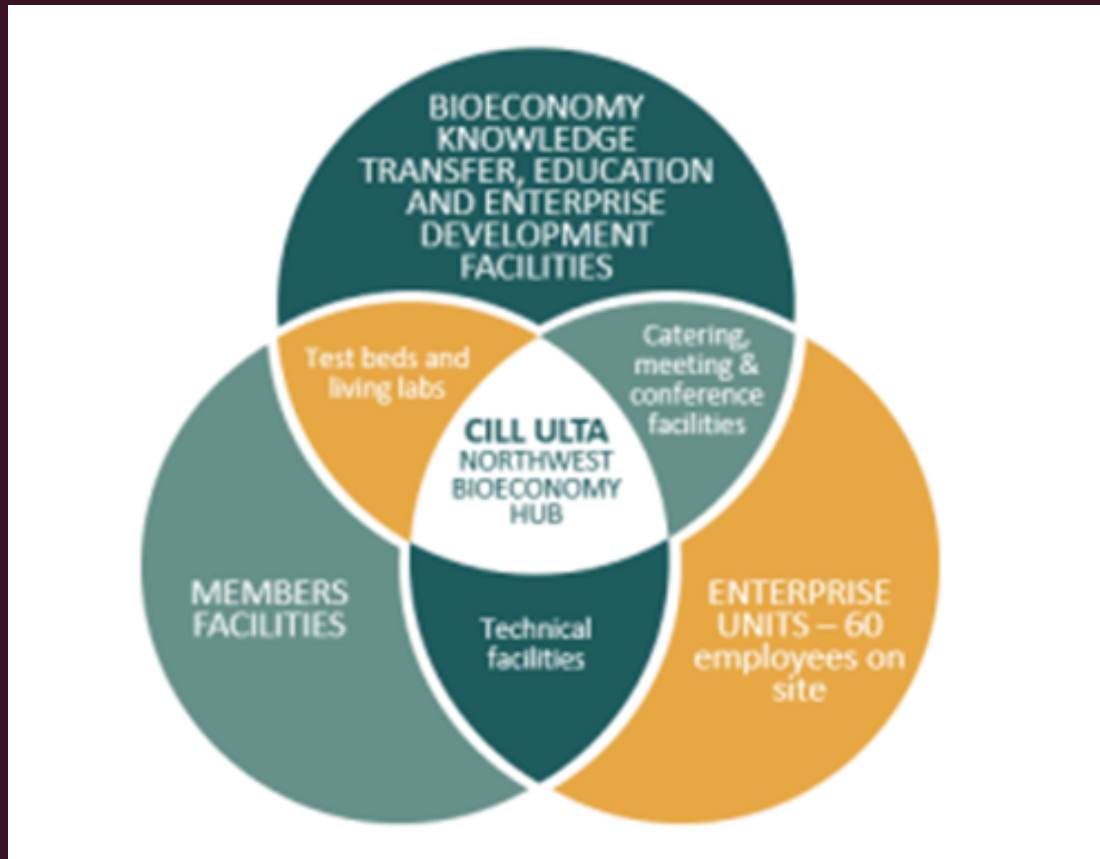
Essentially, DTIF is about funding collaborations that demonstrate technology-based disruptive innovation, collaborations that can:

- Alter markets
- Alter the way business operates
- Involve new products or the emergence of new business models



The Northwest Bioeconomy Hub Layers

The Northwest Bioeconomy Hub will have a multifaceted approach, from a knowledge transfer hub providing education and development facilities, sharing research and development in the Bioeconomy, to technical facilities, test beds and living labs as well as early stage enterprise Units



Membership Details

Cairde Chill ULta has been established to enable companies and organisations of various types, as well as individuals, to become supporters and 'friends' of the Cill Ulta community project. This newly established platform will enable interested parties to make a contribution to the important work being carried out by Cill Ulta in promoting sustainability, developing communities, promoting the Irish language and culture, and in building capacities. Cairde Chill Ulta will also be a means of enabling those who participate in the platform to contribute to the advancement of SDG's and the promotion of ESG aims for local, regional, national, and indeed global benefit.

Members of Cairde Cill Ulta will be contributing in a real and tangible way to advancing sustainability, addressing carbon reduction and promoting good practice regarding the Bioeconomy. Members of Cairde Chill Ulta will be publicly acknowledged as supporters of the project and its sustainability aims. They will be invited to participate in information and other relevant events at Cill Ulta. They will receive regular updates and will be kept informed regarding implementation of the projects strategy and work programme.

Support Cairde Cill Ulta in 2023's work program by donating to the project through one of the following options below.

Bronze Membership €100

Silver Membership €250

Gold Membership €500

Platinum Membership €1000

All contributions welcome, depending on affordability for your organisation.





CAIRDE CILL ULTA 2023

Cill Ulta
An Fál Carrach
Co. Dhún na nGall
F92 WF60

074 9180994
mairead@cillulta.ie

Membership Detail 2023

Donors Name:

Company Name
:if relevant

Address :

Phone Number : E-Mail :

Make Donation to Cairde Cill Ulta

Account Number: 16955135
IBAN: IE38 BOFI 9051 1716 9551 35

Membership Package

BRONZE MEMBERSHIP €100 SILVER MEMBERSHIP €250

GOLD MEMBERSHIP €500 PLATNIUM MEMBERSHIP
€1000

ALL CONTRIBUTIONS WELCOMED, DEPENDING ON THE
AFFORDABILITY OF YOUR ORGANISATION

Contact
Mairead@cillulta.ie
074 9180994



Cairde Cill Ulta





**Comhairle Contae
Dhún na nGall**
Donegal County Council



29th September 2022

To Whom It May Concern,

The Economic Development Unit of the Donegal County Council wish to record our strong support for the ongoing work by Cill Ulta Lárionad Acmhainní Nádúrtha (LAN Ctr operating as Cill Ulta), a social enterprise, and in particular its fundraising efforts in development of the North West Bioeconomy Hub.

The social enterprise has secured funding as part of a wider €1.5m Disruptive Technologies Fund initiative to develop innovative farming technologies and tools for farmers and the agriculture sector to improve and monitor crop health in the development of the North West Bioeconomy Hub.

Donegal County Council has already provided both financial and project assistance in the development of the Hub and by extension the Disruptive Technologies Fund.

The Disruptive Technologies Fund is a highly competitive fund and to secure a project of this nature in Donegal is particularly significant given the county's ongoing ambitions to drive innovation capability. This project focuses primarily on the agricultural and food sector which is a sector of strategic importance in Donegal and aligns with the priority objectives set out in the recently launched Donegal Strategic Enterprise Development Plan and the Regional Enterprise Strategy.

We hereby declare our commitment to support this project to continue the development of Cill Ulta Lárionad Acmhainní Nádúrtha (LAN Ctr operating as Cill Ulta), and we look forward to deepening our partnership with the group into the future.

Yours sincerely,

Steven Perry
Economic Development Officer
Economic Development Unit
Donegal County Council



Údarás na
Gaeltachta

Páirc Ghnó Ghaoth Dobhair, Doirí Beaga,

Co. Dhún na nGall, F92 E09T

+353 (0) 74 95 60100 +353 (0) 74 95 60101

eolas@udaras.ie www.udaras.ie

11 Deireadh Fómhair 2022

Don té lena mbaineann

A chara,

Is mian liom a chur in iúl go gcuireann Údarás na Gaeltachta fáilte roimh na pleananna forbartha atá an Lárionad Acmhainní Nádúrtha CTR i bhfoirm fheachtas urraíochta a thionscnamh le plandaí céadfacha, áit suí, spás do chócaireacht faoin spéir agus nithe gaolmhara a fhorbairt ar a láthair i gCill Ulta

Tuigeann muid go mbeidh spás forbartha chomh maith do pháirceáil do dhaoine faoi mhíchumas agus go bhfuil sé i gceist painéil gréine le 6 kw fuinnimh in-athnuaite a insealbhú, rud a luíonn go nádúrtha le straitéis inbhuanaitheachta an tsuímh.

Is cinnte gur togra dúshlánach, fad radharcach, nuálaíoch é seo agus ba mhaith linn ár dtacaíocht láidir a léiriú ina leith

Le dea ghuí

DocuSigned by:

Micheál Mac Giolla Easpaig

1653D8734B9D45B...

Micheal Mac Giolla Easbuig

Bainisteoir Réigiúnach – Dún na nGall



ARD OIFIG

Na Forbacha
Co. na Gaillimhe
H91 TY22

OIFIGÍ RÉIGIÚNACHA

Páirc Ghnó an Daingin,
Baile an Mhuilinn,
Daingean Uí Chúis,
Co. Chiarraí
V92 TX48

Áislann Bhéal an Mhuirthead,
Bóthar an tSéipéil,
Béal an Mhuirthead,
Co. Mhaigh Eo
F26 W5H0

Páirc Ghnó Bhaile Mhic Íre,
Baile Mhic Íre,
Co. Chorcaí
P12 E277