

MEDICAMENTOS DE HEEL

# Tos y resfriado

## Guía de consulta



**-Heel**

Healthcare designed by nature





Principales productos de Heel para los siguientes síntomas y dolencias	Engystol®	Euphorbi- um comp.	Gripp- Heel®	Viburcol®	Angin- Heel®	Broncha- lis-Heel®	Echinacea comp.	Adrisin®	Luffeel®	Oteel®	Phosphor Homma- cord®	Tartephe- dreeel®	Mucosa comp.	Lympho- myosot®	Tonsilla comp.
Fortalece y asiste el sistema inmunitario en el resfriado común y en enfermedades pseudogripales	■	■													●
Tratamiento eficaz de la rinosinusitis aguda Tratamiento de apoyo de la rinosinusitis crónica con pólipos*	●	■												●	
Alivio sintomático del resfriado común y de las enfermedades pseudogripales**	■		■				●								
Agitación general e insomnio en niños a causa de la fiebre				■			●								
Tratamiento sintomático de la amigdalitis/faringitis e infecciones de garganta***					■		●							●	●
Tratamiento de apoyo de la tos crónica de origen bronquial						■							●	●	
Apoyo del sistema inmunitario en caso de tos y resfriado recurrentes	●						●								■
Profilaxis y tratamiento sintomático de la alergia gestacional y de la rinitis alérgica estacional								■	■						
Tratamiento natural de dolores e inflamaciones de oído										■				●	
Tratamiento de la rinitis, faringitis y ronquera											■				
Alivio sintomático de la tos y la inflamación de los bronquios (p. ej., tos espasmódica)					●							■			

● Producto principal

■ Producto complementario

\* Rinosinusitis sin pólipos: Euphorbium comp. + Traumeel comprimidos

\*\* Engystol® se recomienda en la fase temprana y Gripp-Heel® en la fase avanzada.

\*\*\* En caso de infecciones con estreptococo beta hemolítico como tratamiento complementario a los antibióticos





# Productos e indicaciones

Producto	Indicaciones
<b>Engystol®</b>	<ul style="list-style-type: none"> <li>— Resfriado común</li> <li>— Enfermedades pseudogripales</li> <li>— Infecciones virales leves</li> </ul>
<b>Euphorbium compositum</b>	<ul style="list-style-type: none"> <li>— Rinosinusitis aguda y crónica</li> </ul>
<b>Gripp-Heel®</b>	<ul style="list-style-type: none"> <li>— Resfriado común</li> <li>— Enfermedades pseudogripales</li> </ul>
<b>Viburcol®</b>	<ul style="list-style-type: none"> <li>— Agitación con o sin fiebre</li> <li>— Dentición</li> <li>— Dolor abdominal leve</li> <li>— Insomnio</li> </ul>
<b>Angin-Heel®</b>	<ul style="list-style-type: none"> <li>— Tratamiento sintomático de: Amigdalitis aguda Amigdalitis crónica Faringitis</li> </ul>
<b>Bronchalis-Heel®</b>	<ul style="list-style-type: none"> <li>— Alivio sintomático de la tos bronquial</li> </ul>
<b>Echinacea compositum</b>	<ul style="list-style-type: none"> <li>— Inmunoestimulación</li> <li>— Alivio sintomático en las infecciones agudas (especialmente bacterianas)</li> </ul>
<b>Adrisin®</b>	<ul style="list-style-type: none"> <li>— Tratamiento profiláctico de la rinitis alérgica</li> </ul>
<b>Luffeel®</b>	<ul style="list-style-type: none"> <li>— Tratamiento sintomático de la rinitis alérgica</li> </ul>
<b>Oteel®</b>	<ul style="list-style-type: none"> <li>— Dolor de oídos</li> <li>— Inflamación de oídos</li> </ul>
<b>Phosphor-Homaccord®</b>	<ul style="list-style-type: none"> <li>— Ronquera</li> <li>— Laringitis</li> <li>— Faringitis</li> </ul>
<b>Tartephedreel®</b>	<ul style="list-style-type: none"> <li>— Bronquitis espasmódica</li> <li>— Alivio sintomático de la tos y la inflamación de los bronquios (p. ej., tos espasmódica)</li> </ul>
<b>Mucosa compositum</b>	<ul style="list-style-type: none"> <li>— Regulación y apoyo de las funciones de las membranas mucosas, incluidas las vías respiratorias</li> </ul>
<b>Lymphomyosot®</b>	<ul style="list-style-type: none"> <li>— Trastornos linfáticos</li> <li>— Infecciones recurrentes</li> <li>— Drenaje y detoxificación</li> </ul>
<b>Tonsilla compositum</b>	<ul style="list-style-type: none"> <li>— Infecciones recurrentes</li> <li>— Resfriados relacionados con el estrés</li> <li>— Apoyo sinérgico del sistema inmunitario</li> </ul>

TOS Y RESFRIADO

# Engystol®

**REFUERZA EL SISTEMA INMUNITARIO DE SUS PACIENTES DE FORMA NATURAL PARA COMBATIR**

- Resfriado común
- Enfermedades pseudogripales
- Infecciones virales leves

**FORTALECE Y APOYA EL SISTEMA INMUNITARIO PROPIO DEL ORGANISMO DURANTE LA INFECCIÓN VIRAL:**

- Retrasa la aparición del resfriado y de la enfermedad pseudogripal
- Reduce la gravedad de los síntomas
- Disminuye el tiempo de recuperación



## Comprimidos

**Adultos**  
(y niños a partir de los 12 años)



**Niños**  
6-11 años

**Niños**  
2-5 años



**Niños**  
menores de 2 años

### Posología aguda o inicial

1 comprimido cada 1/2-1 hora hasta un máximo de 12 veces al día; posteriormente, continuar con la posología estándar

1 comprimido cada 1-2 horas, hasta un máximo de 8 veces al día; posteriormente, continuar con la posología estándar

1 comprimido cada 1-2 horas, hasta un máximo de 6 veces al día; posteriormente, continuar con la posología estándar

1 comprimido cada 1-2 horas, hasta un máximo de 4 veces al día; posteriormente, continuar con la posología estándar

### Posología estándar

1 comprimido  
3 veces al día

1 comprimido  
2 veces al día

1 comprimido  
1-2 veces al día

1 comprimido  
1 vez al día



## Inyectables inyección

**Adultos**  
(y niños a partir de los 12 años)



**Niños**  
6-11 años

**Niños**  
2-5 años



### Posología aguda o inicial

1 ampolla al día

2/3 de ampolla al día

1/2 de ampolla al día

### Posología estándar

1 ampolla  
entre 1 y 3 veces por semana

2/3 de ampolla  
entre 1 y 3 veces por semana

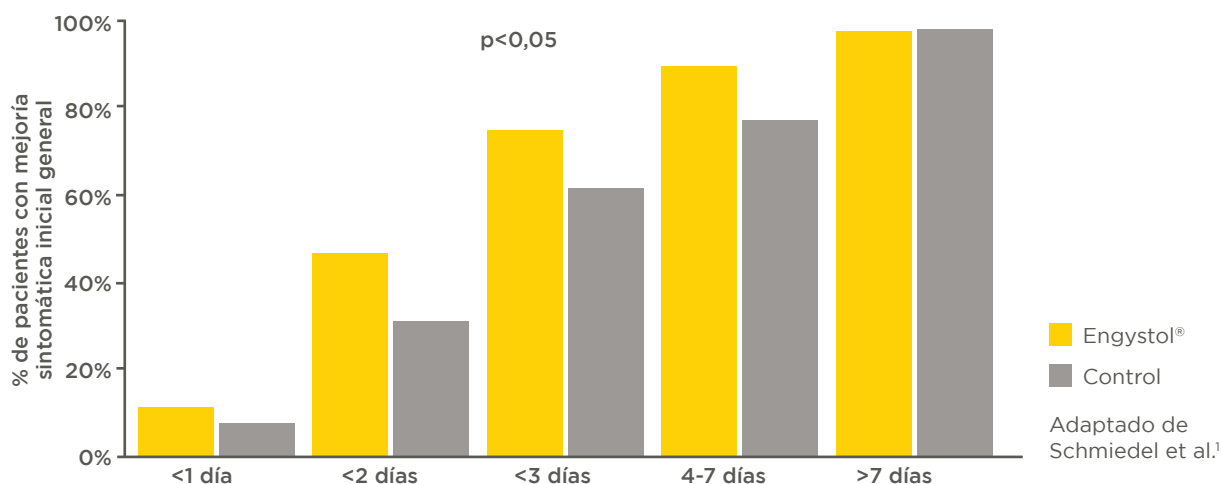
1/2 de ampolla  
entre 1 y 3 veces por semana

## Datos clínicos

### MEJORA LOS SÍNTOMAS DEL RESFRIADO COMÚN<sup>1</sup>

- Más del 75 % de los pacientes refirieron un alivio importante de los síntomas al cabo de 3 días<sup>1</sup>
- Un número notablemente superior de pacientes que tomaron Engystol® refirieron mejorías al cabo de 3 días (77,1 %), frente al grupo de control (61,7 %)<sup>1</sup>

Efecto del tratamiento con comprimidos de Engystol® sobre la mejoría sintomática a lo largo del tiempo, frente a los tratamientos convencionales de venta libre (control)<sup>1</sup>



#### Bibliografía

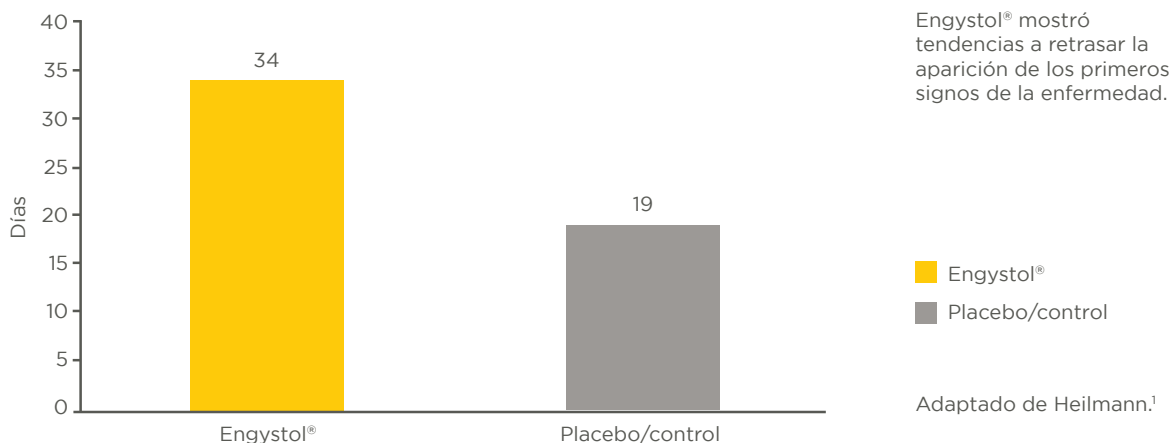
1) Schmiedel V, Klein P. A complex homeopathic preparation for the symptomatic treatment of upper respiratory infections associated with the common cold: An observational study. Explore. 2006;2(2):109-114. doi:10.1016/j.explore.2005.12.008



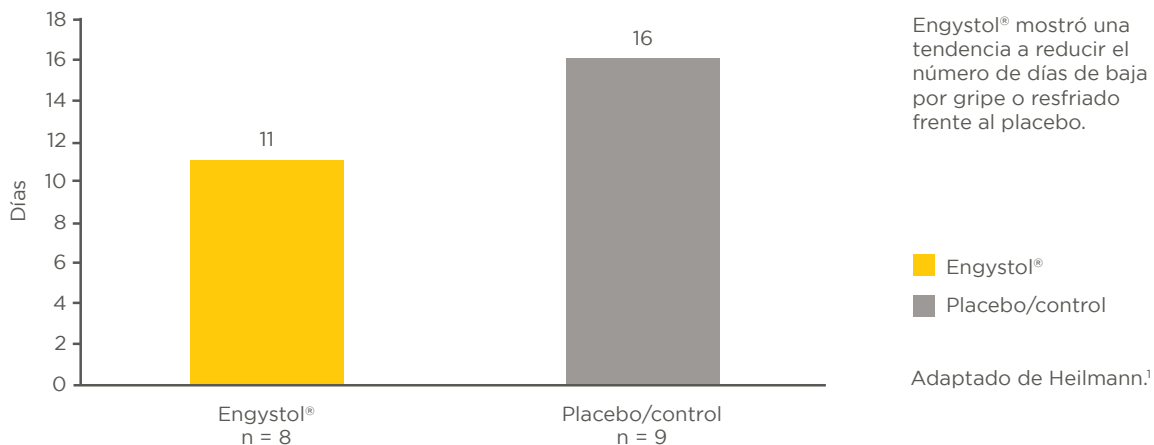
## Datos clínicos

**MOSTRÓ MAYOR PROBABILIDAD DE RETRASAR LA APARICIÓN DE LOS PRIMEROS SIGNOS DE LA ENFERMEDAD Y DE DISMINUIR LA DURACIÓN Y GRAVEDAD DE LOS SÍNTOMAS<sup>1</sup>**

Tiempo transcurrido desde la última inyección hasta la aparición de la gripe o el resfriado<sup>1</sup>



Período de tiempo durante el que se eximió a los participantes del ensayo (soldados) del trabajo al aire libre durante la gripe o el resfriado<sup>1</sup>

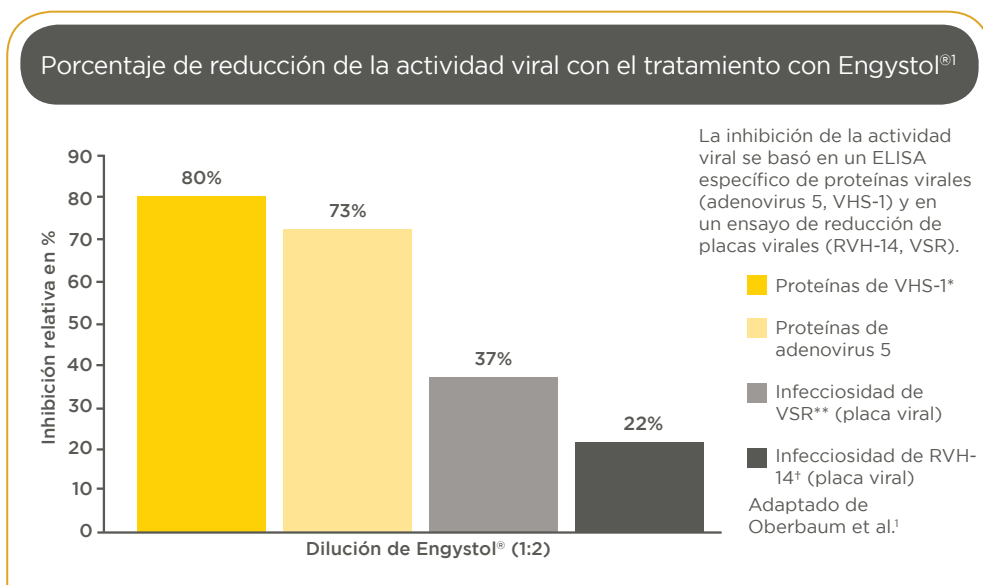


### Bibliografía

1) Heilmann, A. A Combination Injection Preparation as a Prophylactic for Flu and Common Colds. Biol Ther. 1994;12(4):249-253.

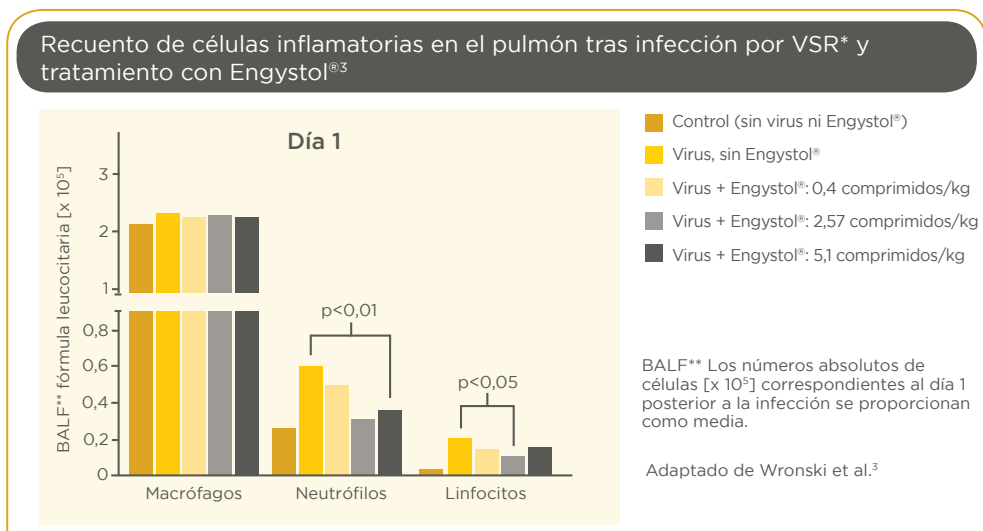
## Mecanismo de acción

HA DEMOSTRADO TENER EFECTO ANTIVIRAL FRENTE A VARIOS VIRUS FRECUENTES<sup>1,2</sup>



\*VHS-1: Virus del herpes simple tipo 1;  
 \*\*VSR: Virus sincitial respiratorio;  
 †RVH-14: Rinovirus humano tipo 14.

ESTIMULA Y APOYA EL SISTEMA INMUNITARIO A LA HORA DE HACER FRENTE A LOS RESFRIADOS<sup>2-5</sup>



\*VSR: Virus sincitial respiratorio;  
 \*\*BALF: Líquido de lavado broncoalveolar.

### Bibliografía

- Oberbaum M, Glatthaar-Saalmuller B, Stolt P, Weiser M. Antiviral activity of Engystol: an in vitro analysis. *J Altern Complement Med.* 2005; 11(5):855-862. doi:10.1089/acm.2005.11.855
- Roeska K, Seilheimer B. Antiviral activity of Engystol(R) and Gripp-Heel(R): an in-vitro assessment. *Immune Based Ther Vaccines.* 2010;8(1):6. doi:10.1186/1476-8518-8-6
- Wronski S, Dannenmaier J, Schild S, et al. Engystol reduces onset of experimental respiratory syncytial virus-induced respiratory inflammation in mice by modulating macrophage phagocytic capacity. *PLoS One.* 2018;13(4): e0195822. doi:10.1371/journal.pone.0195822
- Wagner H, Jurcic K, Doenicke A, Behrens N. Influence of Homeopathic Drug Preparations on the Phagocytosis Capability of Granulocytes: In-vitro tests and controlled single-blind studies. *Biol Ther.* 1993;11(1):43-49.
- Enbergs H. Effects of the homeopathic preparation Engystol on interferon-gamma production by human T-lymphocytes. *Immunol Invest.* 2006;35(1):19-27. doi:10.1080/08820130500496753

# Euphorbium compositum

## RINOSINUSITIS AGUDA Y CRÓNICA

- Trata la causa subyacente de las infecciones respiratorias virales
- Apoya la función de la mucosa
- Modula los mediadores inflamatorios
- Sin efecto de rebote
- No produce adicción ni tolerancia
- Apto para todos los pacientes, incluidos los niños a partir de los 2 años



### Espray nasal

**Adultos**  
(y niños a partir de los 12 años)

+ 12

**Niños**  
6-11 años



**Niños**  
2-5 años

#### Posología aguda o inicial

1-2 pulverizaciones en cada orificio nasal cada 1/2-1 h el primer día, hasta un máximo de 8 veces al día; posteriormente, continuar con la posología estándar

1 pulverización en cada orificio nasal cada 1/2-1 h el primer día, hasta un máximo de 8 veces al día; posteriormente, continuar con la posología estándar

1 pulverización en cada orificio nasal cada 1/2-1 h el primer día, hasta un máximo de 6 veces al día; posteriormente, continuar con la posología estándar

#### Posología estándar

1-2 pulverizaciones en cada orificio nasal 3-5 veces al día

1 pulverización en cada orificio nasal 3-5 veces al día

1 pulverización en cada orificio nasal 3-5 veces al día



### Gotas

**Adultos**  
(y niños a partir de los 12 años)

+ 12

**Niños**  
6-11 años

**Niños**  
2-5 años

**Niños**  
menores de 2 años



#### Posología aguda o inicial

10 gotas cada 1/2-1 hora, hasta un máximo de 12 veces al día, posteriormente, continuar con la posología estándar

7 gotas cada 1/2-1 hora, hasta un máximo de 12 veces al día, posteriormente, continuar con la posología estándar

5 gotas cada 1/2-1 hora, hasta un máximo de 12 veces al día, posteriormente, continuar con la posología estándar

3 gotas cada 1/2-1 hora, hasta un máximo de 12 veces al día, posteriormente, continuar con la posología estándar

#### Posología estándar

10 gotas 3 veces al día

7 gotas 3 veces al día

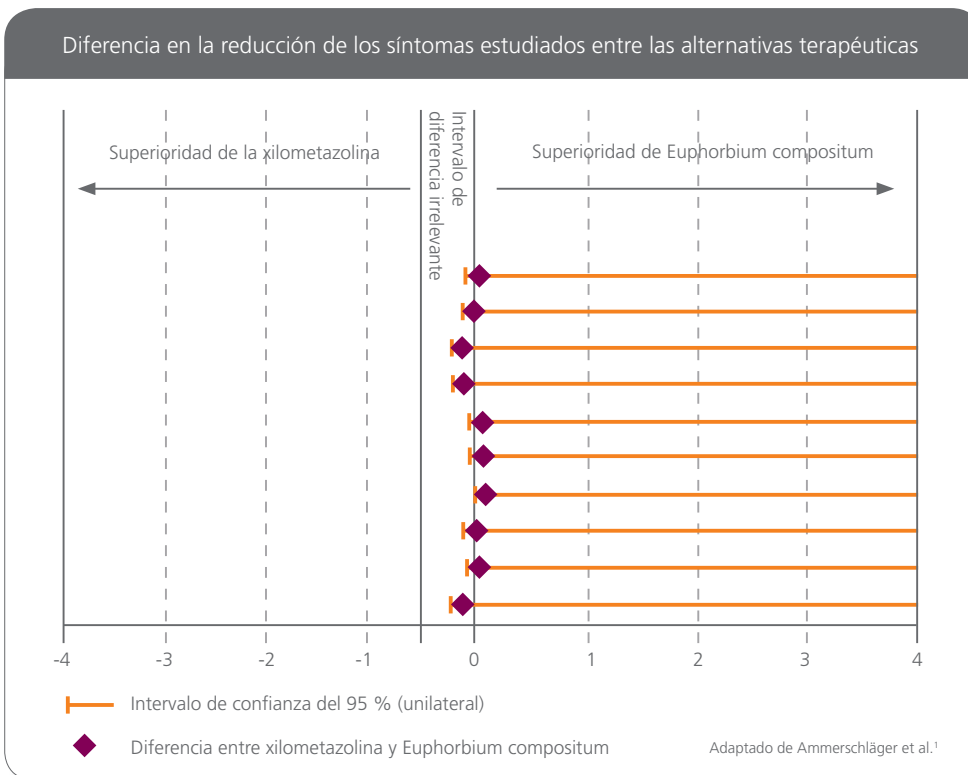
5 gotas 3 veces al día

3 gotas 3 veces al día



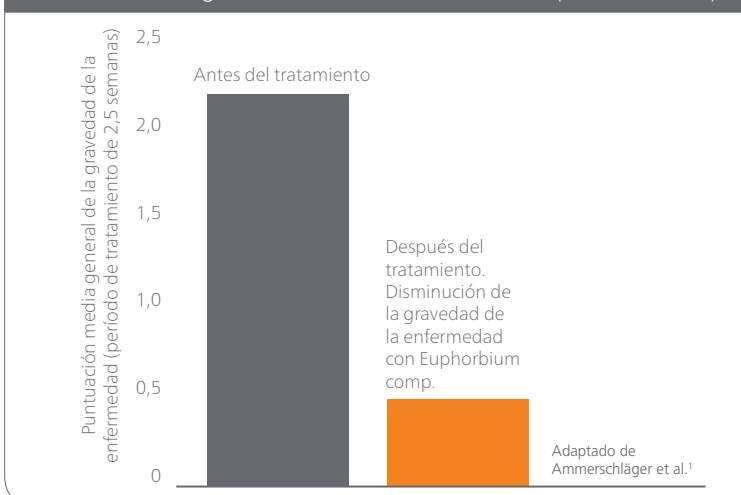
## Datos clínicos

- Beneficio terapéutico comparable al de la xilometazolina<sup>1</sup>
- Es una forma eficaz y natural de aliviar los síntomas de la rinitis aguda y la sinusitis<sup>1</sup>



Diferencias con intervalos de confianza unilaterales ajustados según los índices de propensión y los valores iniciales; pacientes incluidos en el análisis de eficacia. Dosis de Euphorbium compositum spray nasal 3-5 veces/día, xilometazolina: de acuerdo con las recomendaciones del fabricante; duración

### Disminución de la gravedad de la enfermedad con Euphorbium comp.<sup>1</sup>

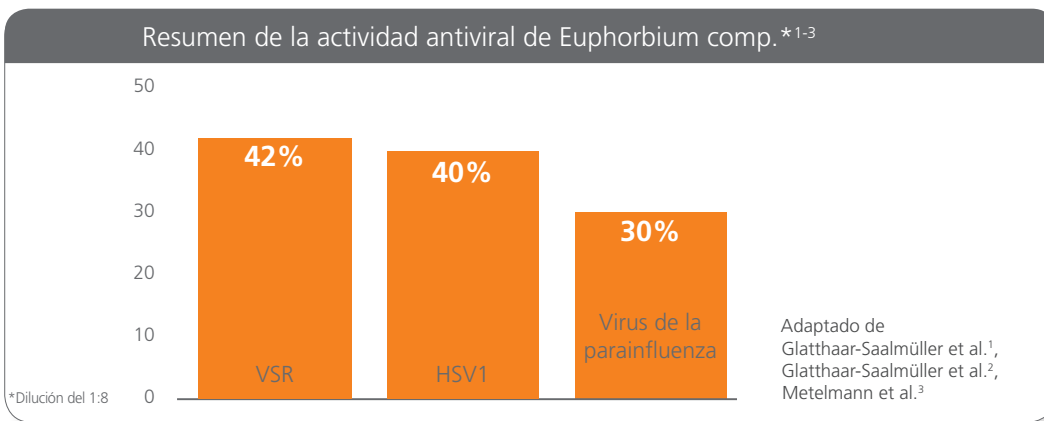


#### Bibliografía

1) Ammerschläger H, Klein P, Weiser M, Oberbaum M. Treatment of Inflammatory Diseases of the Upper Respiratory Tract – Comparison of a Homeopathic Complex Remedy with Xylometazoline [in German]. Forschende Komplementärmed Klass Naturheilkd. 2005; 12: 24-31

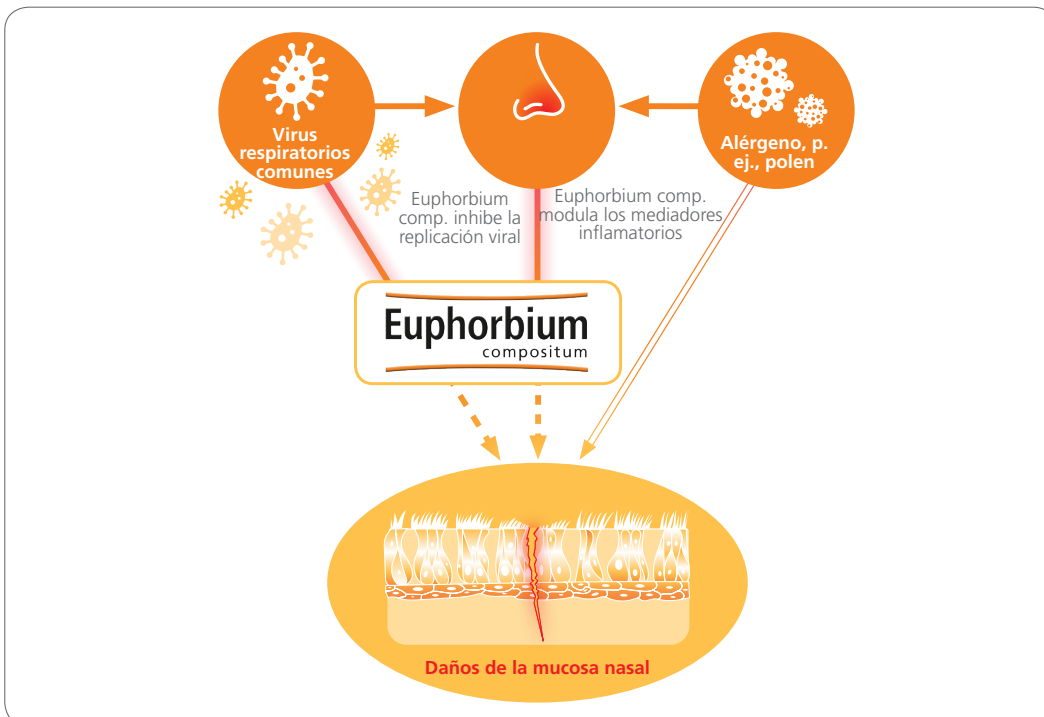
# Mecanismo de acción

— Tiene un efecto inhibitorio sobre la proliferación viral<sup>1-3</sup>



RSV: Virus sincitial respiratorio;  
VHS-1: Virus del herpes simple tipo 1

... combinado con un efecto modulador sobre los mediadores inflamatorios, con lo que apoya la función de la mucosa.<sup>1-4</sup>



## Bibliografía

- 1) Glatthaar-Saalmüller B, Fallier-Becker P. Antiviral action of Euphorbium compositum and its components. Forsch Komplementärmed Klass Naturheilkd. 2001;8(4):207-212.
- 2) Glatthaar-Saalmüller B, Borner M, Weiser M. Euphorbium compositum: viruses of the upper respiratory tract inhibited [in German]. Biologische Medizin. 2002;31(4):194-195.
- 3) Metelmann H, Glatthaar-Saalmüller B. Antiviral action of a homeopathic medication. Biomed Ther. 2000;18(1):160-164.
- 4) Schmolz M, Metelmann H. Modulation of cytokine synthesis in human leukocytes by individual components of a combination homeopathic nasal spray. Biol Ther. 1999;17(2):61-63:75.

TOS Y RESFRIADO

# Gripp-Heel®



## ALIVIO SINTOMÁTICO DE



- Resfriado común
- Enfermedades pseudogripales

## CUALIDADES DEL PRODUCTO

- Eficaz para el tratamiento de infecciones de las vías respiratorias altas
- Disminuye el tiempo de recuperación
- Efectos antivirales demostrados
- Estimula el sistema inmunitario
- Excelente tolerabilidad



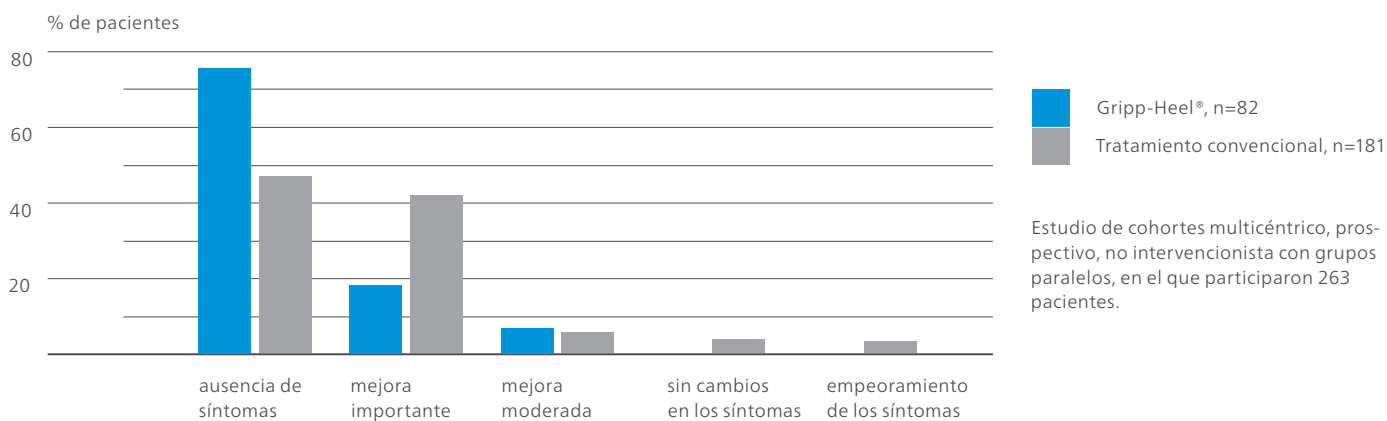
Comprimidos		Posología aguda o inicial	Posología estándar
<b>Adultos</b> (y niños a partir de los 12 años) 	+ 12	1 comprimido cada 1/2-1 hora, hasta 12 veces al día	1 comprimido 3 veces al día
<b>Niños 6-11 años</b>		1 comprimido cada 1-2 horas, hasta 8 veces al día	1 comprimido 2 veces al día
<b>Niños 2-5 años</b> 		1 comprimido cada 1-2 horas, hasta 6 veces al día	1 comprimido 1-2 veces al día
<b>Niños menores de 2 años</b>		1 comprimido cada 1-2 horas, hasta 4 veces al día	1 comprimido 1 vez al día

Inyectables inyección		Posología aguda o inicial	Posología estándar
<b>Adultos</b> (y niños a partir de los 12 años) 	+ 12	1 ampolla al día	1 ampolla entre 1 y 3 veces por semana
<b>Niños 6-11 años</b> 		2/3 de ampolla al día	2/3 de ampolla entre 1 y 3 veces por semana
<b>Niños 2-5 años</b>		1/2 de ampolla al día	1/2 de ampolla entre 1 y 3 veces por semana

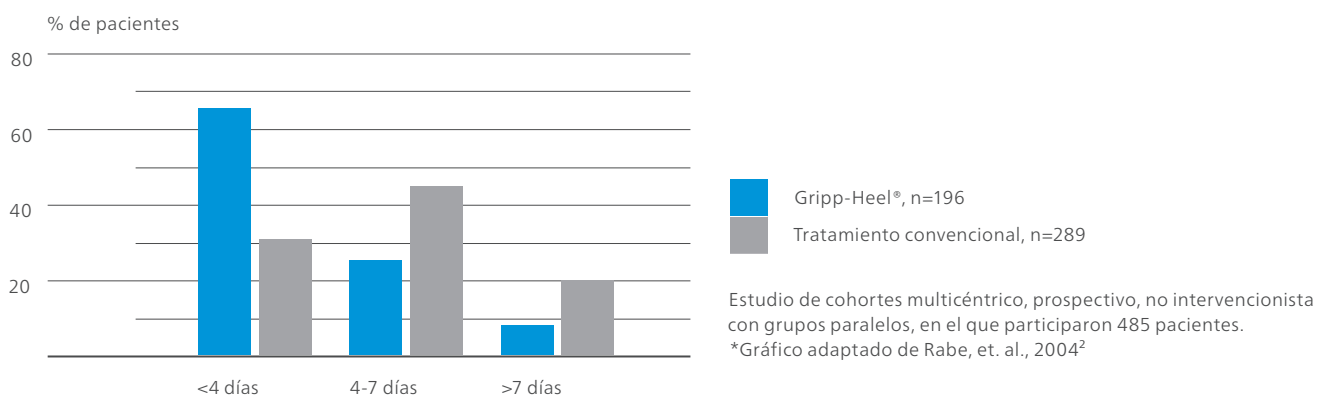


## Eficacia clínica

### Gripp-Heel® – igual de eficaz que el tratamiento convencional<sup>1</sup>



### Gripp-Heel® – alivio más rápido de los síntomas<sup>2\*</sup>

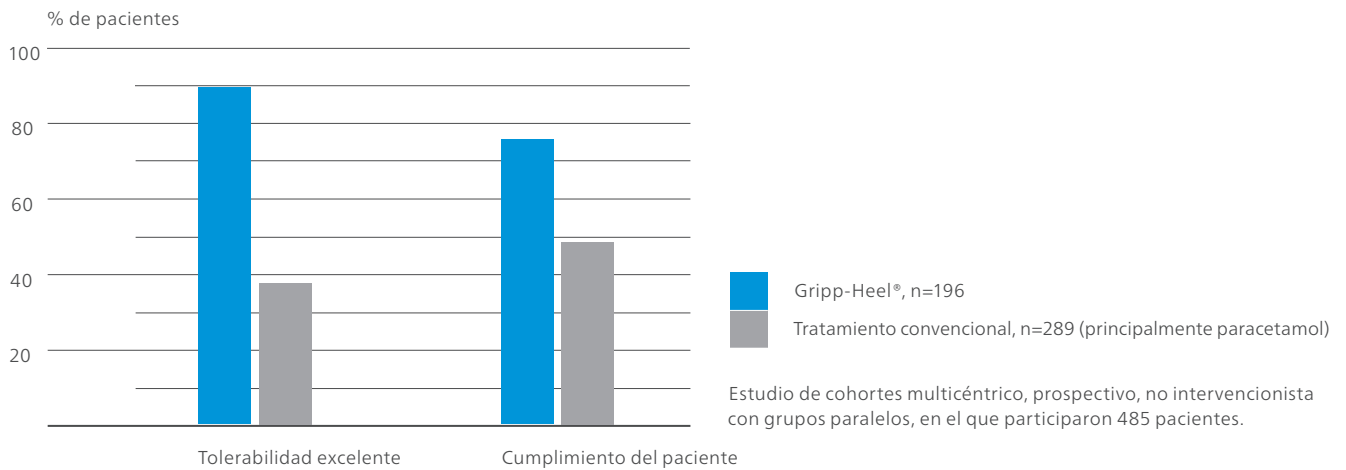


#### Bibliografía

- 1) Rabe A. Symptomatische Behandlung akuter grippaler Infekte: Homöopathikum und konventionelle Therapie im Vergleich. [Symptomatic Treatment of Acute Upper Respiratory Infections: A Comparison of Homeopathic and Conventional Therapies.] Der Allgemeinarzt. 2003; 25(20):1522-23. (English translation in J Biomed Ther 2007; Winter: 7-10.)
- 2) Rabe A, Weiser M, Klein P. Effectiveness and tolerability of a homeopathic remedy compared with conventional therapy for mild viral infections. Int J Clin Pract. 2004; 58(9):827-832.

# Gripp-Heel®

## Gripp-Heel® – mejor tolerabilidad<sup>2</sup>



### Bibliografía

- 1) Rabe A. Symptomatische Behandlung akuter grippaler Infekte: Homöopathikum und konventionelle Therapie im Vergleich. [Symptomatic Treatment of Acute Upper Respiratory Infections: A Comparison of Homeopathic and Conventional Therapies.] Der Allgemeinarzt. 2003;25(20):1522-23. (English translation in J Biomed Ther 2007;Winter:7-10.)
- 2) Rabe A, Weiser M, Klein P. Effectiveness and tolerability of a homeopathic remedy compared with conventional therapy for mild viral infections. Int J Clin Pract. 2004;58(9):827-832.

TOS Y RESFRIADO






### ALIVIA LA AGITACIÓN Y LA IRRITABILIDAD INFANTILES

- Infecciones comunes (con o sin fiebre)
- Dentición
- Cólico del lactante, meteorismo, estreñimiento
- Irritabilidad (p. ej., tras la vacunación)



### CUALIDADES DEL PRODUCTO

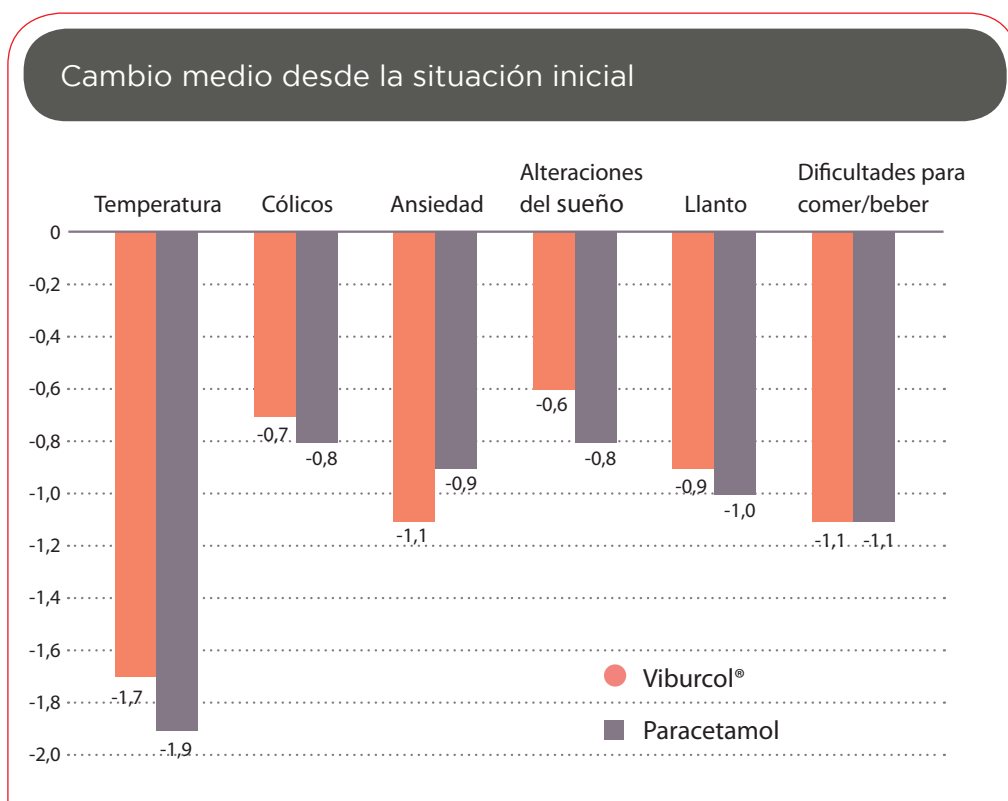
- Eficacia clínica
- Alivio rápido de los síntomas
- Sin efectos secundarios, interacciones medicamentosas ni contraindicaciones conocidos
- Excelente perfil de seguridad

 <b>Supositorios</b>	<b>Posología aguda o inicial</b>	<b>Posología estándar</b>
<b>Adultos</b> (y niños a partir de los 12 años) 	2 supositorios cada 2 horas hasta 6 veces al día	2 supositorios hasta 3 veces al día
<b>Niños 6-11 años</b>	1 supositorio cada 2 horas hasta 8 veces al día	1 supositorio hasta 4 veces al día
<b>Niños 2-5 años</b>	1 supositorio cada 2 horas hasta 6 veces al día	1 supositorio hasta 3 veces al día
<b>Niños menores de 2 años</b> 	1 supositorio cada 2 horas hasta 4 veces al día	1 supositorio hasta 2 veces al día



## Datos clínicos

- Mejora rápida de los síntomas<sup>1</sup>
- Tratamiento de la agitación en bebés y niños<sup>1</sup>
- Tratamiento sintomático de las infecciones comunes<sup>1</sup>



### Bibliografía

1) Derasse M, et al. The effects of a complex homeopathic medicine compared with acetaminophen in the symptomatic treatment of acute febrile infections in children: an observational study. Explore. 2005;1(1):33-39.

TOS Y RESFRIADO

# Angin-Heel®

## LA FORMA NATURAL DE TRATAR LOS SÍNTOMAS DE LA AMIGDALITIS/FARINGITIS\*

Tratamiento sintomático de:

- Amigdalitis aguda
- Amigdalitis crónica
- Faringitis



### Comprimidos

**Adultos**

(y niños a partir de los 12 años)

+ 12

**Niños**

**6-11 años**

**Niños**

**2-5 años**

**Niños**

**menores de 2 años**



### Posología aguda o inicial

1 comprimido cada 1/2-1 hora,  
hasta 12 veces al día

1 comprimido cada 1-2 horas,  
hasta 8 veces al día

1 comprimido cada 1-2 horas,  
hasta 6 veces al día

1 comprimido cada 1-2 horas,  
hasta 4 veces al día

### Posología estándar

1 comprimido  
3 veces al día

1 comprimido  
2 veces al día

1 comprimido  
1-2 veces al día

1 comprimido  
1 vez al día



\* En caso de infecciones con estreptococo beta hemolítico, como tratamiento complementario de los antibióticos. Si desea más información, consulte el prospecto del envase.

TOS Y RESFRIADO

# Bronchalis-Heel®

ALIVIO SINTOMÁTICO DE LA TOS BRONQUIAL





Comprimidos		Posología aguda o inicial	Posología estándar
 <b>Adultos</b> (y niños a partir de los 12 años)	+ 12	1 comprimido cada 1/2-1 hora, hasta 12 veces al día	1 comprimido 3 veces al día
<b>Niños 6-11 años</b>		1 comprimido cada 1-2 horas, hasta 8 veces al día	1 comprimido 2 veces al día
<b>Niños 2-5 años</b>		1 comprimido cada 1-2 horas, hasta 6 veces al día	1 comprimido 1-2 veces al día
<b>Niños menores de 2 años</b>		1 comprimido cada 1-2 horas, hasta 3 veces al día	1 comprimido 1 vez al día



# Echinacea compositum

REFUERCE LA INMUNIDAD EN ÉPOCA DE INFECCIONES

- Inmunoestimulación
- Alivio sintomático en las infecciones agudas (especialmente bacterianas)



Comprimidos		Posología aguda o inicial	Posología estándar
 <p><b>Adultos</b> (y niños a partir de los 12 años)</p>	+ 12	1 comprimido cada 1/2-1 hora, hasta 12 veces al día	1 comprimido 3 veces al día
<b>Niños 6-11 años</b>		1 comprimido cada 1-2 horas, hasta 8 veces al día	1 comprimido 2 veces al día
<b>Niños 2-5 años</b>		1 comprimido cada 1-2 horas, hasta 6 veces al día	1 comprimido 1-2 veces al día
<b>Niños menores de 2 años</b>		1 comprimido cada 1-2 horas, hasta 4 veces al día	1 comprimido 1 vez al día

Inyectables inyección		Posología aguda o inicial	Posología estándar
 <p><b>Adultos</b> (y niños a partir de los 12 años)</p>	+ 12	1 ampolla al día	1 ampolla entre 1 y 3 veces por semana
<b>Niños 6-11 años</b>		2/3 de ampolla al día	2/3 de ampolla entre 1 y 3 veces por semana
<b>Niños 2-5 años</b>		1/2 de ampolla al día	1/2 de ampolla entre 1 y 3 veces por semana

TOS Y RESFRIADO

# Adrisin®

## TRATAMIENTO PROFILÁCTICO DE LA RINITIS ALÉRGICA

- 2 en 1: sustituye a los sprays nasales y los colirios
- Regulación multicomponente y multifocal de las reacciones alérgicas
- Mejora los síntomas de la rinitis, conjuntivitis y urticaria



### Comprimidos

**Adultos**

(y niños a partir de los 12 años)

+ 12

**Niños**

**6-11 años**

**Niños**

**2-5 años**

**Niños**

**menores de 2 años**



### Posología aguda o inicial

1 comprimido cada 1/2-1 hora, hasta 12 veces al día

1 comprimido cada 1-2 horas, hasta 8 veces al día

1 comprimido cada 1-2 horas, hasta 6 veces al día

1 comprimido cada 1-2 horas, hasta 4 veces al día

### Posología estándar

1 comprimido 3 veces al día

1 comprimido 2 veces al día

1 comprimido 1-2 veces al día

1 comprimido 1 vez al día



TOS Y RESFRIADO





**DEFENSA CONTRA LAS ALERGIAS Y LA RINITIS ALÉRGICA ESTACIONAL**

— Tratamiento sintomático de la rinitis alérgica



 <b>Comprimidos</b>		Posología aguda o inicial	Posología estándar
<b>Adultos</b> (y niños a partir de los 12 años)	+ 12	1 comprimido cada 1/2-1 hora, hasta 12 veces al día	1 comprimido 3 veces al día
<b>Niños 6-11 años</b>		1 comprimido cada 1-2 horas, hasta 8 veces al día	1 comprimido 2 veces al día
<b>Niños 2-5 años</b>		1 comprimido cada 1-2 horas, hasta 6 veces al día	1 comprimido 1-2 veces al día
<b>Niños menores de 2 años</b>		1 comprimido cada 1-2 horas, hasta 4 veces al día	1 comprimido 1 vez al día

 <b>Espray nasal</b>		Posología aguda o inicial	Posología estándar
<b>Adultos</b> (y niños a partir de los 12 años)	+ 12	1-2 pulverizaciones en cada orificio nasal cada 1/2-1 h el primer día, hasta un máximo de 8 veces al día; posteriormente, continuar con la posología estándar	1-2 pulverizaciones en cada orificio nasal 3-5 veces al día
<b>Niños 6-11 años</b>		1 pulverización en cada orificio nasal cada 1/2-1 h el primer día, hasta un máximo de 8 veces al día; posteriormente, continuar con la posología estándar	1 pulverización en cada orificio nasal 3-5 veces al día
<b>Niños 2-5 años</b>		1 pulverización en cada orificio nasal cada 1/2-1 h el primer día, hasta un máximo de 6 veces al día; posteriormente, continuar con la posología estándar	1 pulverización en cada orificio nasal 3-5 veces al día





TOS Y RESFRIADO



CALMA Y CURA LA INFLAMACIÓN DE OÍDOS

- Dolor de oídos
- Inflamación de oídos



 <b>Gotas para los oídos</b>		Posología aguda o inicial	Posología estándar
<b>Adultos</b> (y niños a partir de los 12 años)	+ 12	ver "Posología estándar"	3-4 gotas 4 veces al día o más, si es necesario
<b>Niños</b> 6-11 años		ver "Posología estándar"	3 gotas 4 veces al día o más, si es necesario
<b>Niños</b> 2-5 años		ver "Posología estándar"	2 gotas 4 veces al día o más, si es necesario
<b>Niños</b> menores de 2 años		ver "Posología estándar"	1-2 gotas 4 veces al día, según lo indicado [consultar a un médico antes del uso]




TOS Y RESFRIADO




# Phosphor-Homaccord®

## TRATAMIENTO DEL DOLOR Y DE LA INFLAMACIÓN DE GARGANTA

- Ronquera
- Laringitis
- Faringitis



 <b>Gotas</b>		Posología aguda o inicial	Posología estándar
<b>Adultos</b> (y niños a partir de los 12 años) 		10 gotas cada 1/2-1 hora, hasta 12 veces al día	10 gotas 3 veces al día
<b>Niños 6-11 años</b>		7 gotas cada 1/2-1 hora hasta 12 veces al día	7 gotas 3 veces al día
<b>Niños 2-5 años</b> 		5 gotas cada 1/2-1 hora, hasta 12 veces al día	5 gotas 3 veces al día
<b>Niños menores de 2 años</b>		3 gotas cada 1/2-1 hora, hasta 12 veces al día	3 gotas 3 veces al día

 <b>Inyectables inyección</b>		Posología aguda o inicial	Posología estándar
<b>Adultos</b> (y niños a partir de los 12 años) 		1 ampolla al día	1 ampolla entre 1 y 3 veces por semana
<b>Niños 6-11 años</b> 		2/3 de ampolla al día	2/3 de ampolla entre 1 y 3 veces por semana
<b>Niños 2-5 años</b>		1/2 de ampolla al día	1/2 de ampolla entre 1 y 3 veces por semana



TOS Y RESFRIADO

# Tartephedreel®

## TRATAMIENTO DE LA TOS ACOMPAÑADA DE PRODUCCIÓN DE MOCO

- Bronquitis
- Alivio sintomático de la tos y la inflamación de los bronquios (p. ej., tos espasmódica)





Gotas		Posología aguda o inicial	Posología estándar
 <p><b>Adultos</b> (y niños a partir de los 12 años)</p>	+ 12	10 gotas cada 1/2-1 hora, hasta 12 veces al día	10 gotas 3 veces al día
<b>Niños</b> 6-11 años		7 gotas cada 1/2-1 hora hasta 12 veces al día	7 gotas 3 veces al día
<b>Niños</b> 2-5 años		5 gotas cada 1/2-1 hora, hasta 12 veces al día	5 gotas 3 veces al día
<b>Niños</b> menores de 2 años		3 gotas cada 1/2-1 hora, hasta 12 veces al día	3 gotas 3 veces al día



# Mucosa compositum

PARA UNA MUCOSA SANA DE LAS VÍAS RESPIRATORIAS

- Regulación y apoyo de las funciones de las membranas mucosas, incluidas las vías respiratorias



Comprimidos		Posología aguda o inicial	Posología estándar
 <p><b>Adultos</b> (y niños a partir de los 12 años)</p>	+ 12	1 comprimido cada 1/2-1 hora, hasta 12 veces al día	1 comprimido 3 veces al día
<p><b>Niños</b> 6-11 años</p>		1 comprimido cada 1-2 horas, hasta 8 veces al día	1 comprimido 2 veces al día
<p><b>Niños</b> 2-5 años</p> 		1 comprimido cada 1-2 horas, hasta 6 veces al día	1 comprimido 1-2 veces al día
<p><b>Niños</b> menores de 2 años</p>		1 comprimido cada 1-2 horas, hasta 4 veces al día	1 comprimido 1 vez al día

Inyectables inyección		Posología aguda o inicial	Posología estándar
 <p><b>Adultos</b> (y niños a partir de los 12 años)</p>	+ 12	ver "Posología estándar"	1 ampolla entre 1 y 3 veces por semana
<p><b>Niños</b> 6-11 años</p> 		ver "Posología estándar"	2/3 de ampolla entre 1 y 3 veces por semana
<p><b>Niños</b> 2-5 años</p>		ver "Posología estándar"	1/2 de ampolla entre 1 y 3 veces por semana

TOS Y RESFRIADO

# Lymphomyosot®

APOYA EL FLUJO LINFÁTICO PARA ACELERAR LA RECUPERACIÓN

- Trastornos linfáticos
- Infecciones recurrentes
- Drenaje y detoxificación



## Comprimidos

**Adultos**

(y niños a partir de los 12 años)

+ 12

**Niños**

**6-11 años**

**Niños**

**2-5 años**

**Niños**

**menores de 2 años**



### Posología aguda o inicial

1 comprimido cada 1/2-1 hora, hasta 12 veces al día

1 comprimido cada 1-2 horas, hasta 8 veces al día

1 comprimido cada 1-2 horas, hasta 6 veces al día

1 comprimido cada 1-2 horas, hasta 4 veces al día

### Posología estándar

1 comprimido  
3 veces al día

1 comprimido  
2 veces al día

1 comprimido  
1-2 veces al día

1 comprimido  
1 vez al día



## Gotas

**Adultos**

(y niños a partir de los 12 años)

+ 12

**Niños**

**6-11 años**

**Niños**

**2-5 años**

**Niños**

**menores de 2 años**



### Posología aguda o inicial

10 gotas cada 1/2-1 hora, hasta 12 veces al día

7 gotas cada 1/2-1 hora hasta 12 veces al día

5 gotas cada 1/2-1 hora, hasta 12 veces al día

3 gotas cada 1/2-1 hora, hasta 12 veces al día

### Posología estándar

10 gotas  
3 veces al día

7 gotas  
3 veces al día

5 gotas  
3 veces al día

3 gotas  
3 veces al día



## Inyectables inyección

**Adultos**

(y niños a partir de los 12 años)

+ 12

**Niños**

**6-11 años**

**Niños**

**2-5 años**



### Posología aguda o inicial

1 ampolla al día

2/3 de ampolla al día

1/2 de ampolla al día

### Posología estándar

1 ampolla  
entre 1 y 3 veces por semana

2/3 de ampolla  
entre 1 y 3 veces por semana

1/2 de ampolla  
entre 1 y 3 veces por semana




## TOS Y RESFRIADO




# Tonsilla compositum

### APOYO INTEGRAL PARA EL SISTEMA INMUNITARIO AGOTADO

- Infecciones recurrentes
- Resfriados relacionados con el estrés
- Apoyo sinérgico del sistema inmunitario



 <b>Gotas</b>		Posología aguda o inicial	Posología estándar
<b>Adultos</b> (y niños a partir de los 12 años) 		10 gotas cada 1/2-1 hora, hasta 12 veces al día	10 gotas 3 veces al día
<b>Niños 6-11 años</b>		7 gotas cada 1/2-1 hora hasta 12 veces al día	7 gotas 3 veces al día
<b>Niños 2-5 años</b> 		5 gotas cada 1/2-1 hora, hasta 12 veces al día	5 gotas 3 veces al día
<b>Niños menores de 2 años</b>		3 gotas cada 1/2-1 hora, hasta 12 veces al día	3 gotas 3 veces al día

 <b>Inyectables inyección</b>		Posología aguda o inicial	Posología estándar
<b>Adultos</b> (y niños a partir de los 12 años) 		ver "Posología estándar"	1 ampolla entre 1 y 3 veces por semana
<b>Niños 6-11 años</b> 		ver "Posología estándar"	2/3 de ampolla entre 1 y 3 veces por semana
<b>Niños 2-5 años</b>		ver "Posología estándar"	1/2 de ampolla entre 1 y 3 veces por semana

# Información del producto en orden alfabético

**Adrisin®**

**Adrisin®**  
Resumen de características del producto

**Tablets**

**Compositions: Tablets:** 1 tabl. cont.: Active ingredients: Acidum arsenicosum D8 15.0 mg, Acidum formicicum D8 15.0 mg, Acidum sulfuricum D22 15.0 mg, Arctium D8 15.0 mg, Arnica montana D6 15.0 mg, Graphites D12 15.0 mg, Histaminum dihydrochloricum D8 15.0 mg, Histaminum dihydrochloricum D12 15.0 mg, Histaminum dihydrochloricum D22 15.0 mg, Ledum palustre D8 15.0 mg, Lycopodium clavatum D6 15.0 mg, Pix pinaceae D10 15.0 mg, Selenium D12 15.0 mg, Sulfurum D12 15.0 mg, Stibium sulfuratum nigrum D10 15.0 mg, Strychnos ignatii D6 15.0 mg, Sulfur D12 15.0 mg, Tellurium metallicum D12 15.0 mg, Thuja occidentalis D6 15.0 mg. Excipients: Lactose monohydrate 30.0 mg, Magnesium stearate 1.5 mg. Contains lactose!

**Indications: Tablets:** Relief of allergic rhinitis during pollen season. May also be used to support the preventative management of these conditions.

**Contraindications: Tablets:** Known allergy (hypersensitivity) to one or more of the ingredients.

**Special warnings and special precautions for use: Tablets:** Patients with rare hereditary problems of galactose intolerance, Lapp lactase deficiency or glucose-galactose malabsorption should not take this medicinal product.

**Side effects: Tablets:** Like all medicinal products, this homeopathic medicinal product can cause side effects, although not everybody gets them.

**Interactions with other medication: Tablets:** No interactions have been reported, and none are expected due to the homeopathic dilutions.

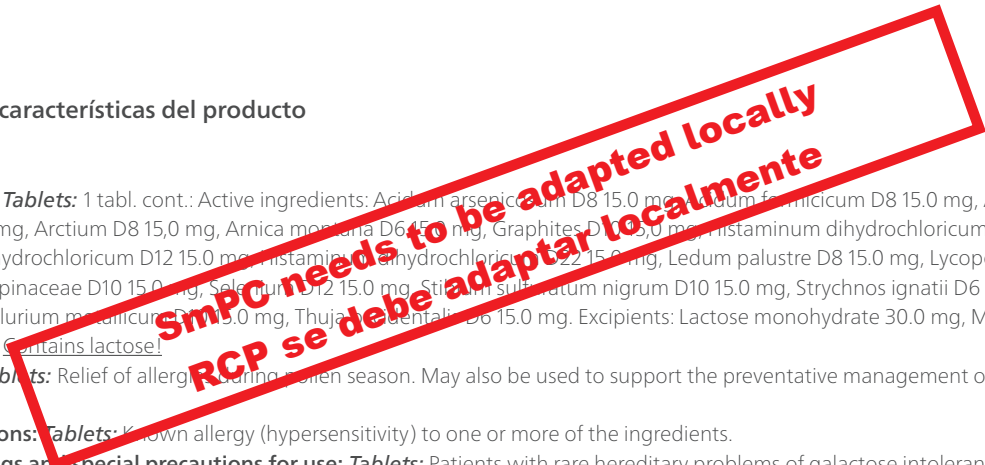
**Pregnancy and lactation: Tablets:** For this product no clinical data on pregnancy and lactation are available. Homeopathic dilutions of the substances present in this medicament are not known to be toxic during pregnancy and lactation. No adverse effects have so far been reported.

**Effects on ability to drive and use machines: Tablets:** No effects on the ability to drive and use machines have been reported, and none are expected due to the homeopathic dilutions.

**Dosage: Tablets: Standard dosage:** Adults (and children 12 yrs. and older): 1 tablet 3x daily. Below 2 yrs.: 1 tablet 1x daily. 2–5 yrs.: 1 tablet 1–2x daily. 6–11 yrs.: 1 tablet 2x daily. **Acute or Initial Dosage:** Adults (and children 12 yrs. and older): 1 tablet every ½ to 1 hr., up to 12x daily, and then continue with standard dosage. Below 2 yrs.: 1 tablet every 1 to 2 hrs., up to 4x daily, and then continue with standard dosage. 2–5 yrs.: 1 tablet every 1 to 2 hrs., up to 6x daily, and then continue with standard dosage. 6–11 yrs.: 1 tablet every 1 to 2 hrs., up to 8x daily, and then continue with standard dosage. **Method of administration:** Preferably allow the tablet to dissolve in the mouth, and then swallow. For children it is possible to crush the tablet and add to a small amount of water. This medicine should be taken away from meals.

**Overdose: Tablets:** No cases of overdose have been reported, and none are expected due to the homeopathic dilutions.

**Package sizes: Tablets (71152):** Packs containing 50, 100 and 250 tablets.





# Angin-Heel®

Angin-Heel®

## Resumen de características del producto

### Tablets

**Compositions: Tablets:** 1 tablet (301.5 mg) contains: Active ingredients: Apis mellifica D4 30 mg, Arnica montana D4 30 mg, Atropa bella-donna D4 60 mg, Hepar sulfuris D6 60 mg, Hydrargyrum bichloratum D8 30 mg, Phytolacca americana D4 30 mg, Solanum dulcamara D4 60 mg. Excipients: Magnesium stearate 1.5 mg. Contains lactose!

**Indications: Tablets:** Symptomatic treatment of tonsillitis and pharyngitis.

**Contraindications: Tablets:** Known allergy (hypersensitivity) to one or more of the ingredients.

**Special warnings and special precautions for use: Tablets:** Patients with rare hereditary problems of galactose intolerance, Lapp lactase deficiency or glucose-galactose malabsorption should not take this medicinal product.

**Side effects: Tablets:** Like all medicinal products, this homeopathic medicinal product can cause side effects, although not everybody gets them.

**Interactions with other medication: Tablets:** No interactions have been reported, and none are expected due to the homeopathic dilutions.

**Pregnancy and lactation: Tablets:** For this product no clinical data on pregnancy and lactation are available. Homeopathic dilutions of the substances present in this medicinal product are not known to be toxic during pregnancy and lactation. No adverse effects have so far been reported.

**Effects on ability to drive and use machines: Tablets:** No effects on the ability to drive and use machines have been reported, and none are expected due to the homeopathic dilutions.

**Dosage: Tablets: Standard dosage:** Adults (and children 12 yrs. and older): 1 tablet 3x daily. Pediatric: Below 2 yrs.: 1 tablet 1x daily. 2–5 yrs.: 1 tablet 1–2x daily. 6–11 yrs.: 1 tablet 2x daily. **Acute or initial dosage:** Adults (and children 12 yrs. and older): 1 tablet every ½ to 1 hr., up to 12x daily, and then continue with standard dosage. Pediatric: Below 2 yrs.: 1 tablet every 1 to 2 hrs., up to 4x daily, and then continue with standard dosage. 2–5 yrs.: 1 tablet every 1 to 2 hrs., up to 6x daily, and then continue with standard dosage. 6–11 yrs.: 1 tablet every 1 to 2 hrs., up to 8x daily, and then continue with standard dosage. **Method of administration:** Preferably allow the tablet to dissolve in the mouth, and then swallow. For children it is possible to crush the tablet and add to a small amount of water. This medicine should be taken away from meals.

**Overdose: Tablets:** No cases of overdose have been reported, and none are expected due to the homeopathic dilutions.

**Package sizes: Tablets (9661):** Packs containing 50 and 250 tablets.

**SmPC needs to be adapted locally  
RCP se debe adaptar localmente**

# Bronchalis-Heel®

## Bronchalis-Heel®

### Resumen de características del producto

#### Tablets

**Compositions: Tablets:** 1 tablet (301.5 mg) contains: Active ingredients: Atropa bella-donna D4 30 mg, Bryonia D4 60 mg, Hyoscyamus niger D4 60 mg, Kalium stibyltartaricum D4 30 mg, Kreosotum D5 30 mg, Lobaria pulmonaria D4 30 mg, Lobelia inflata D4 30 mg, Psychotria ipecacuanha D4 30 mg. Excipients: Magnesium stearate 1.5 mg. Contains lactose!

**Indications: Tablets:** Acute and chronic bronchitis, including smoker's cough.

**Contraindications: Tablets:** Known allergy (hypersensitivity) to one or more of the ingredients.

**Special warnings and special precautions for use: Tablets:** Patients with rare hereditary problems of galactose intolerance, Lapp lactase deficiency or glucose-galactose malabsorption should not take this medicinal product.

**Side effects: Tablets:** Like all medicinal products, this homeopathic medicinal product can cause side effects, although not everybody gets them.

**Interactions with other medication: Tablets:** No interactions have been reported, and none are expected due to the homeopathic dilutions.

**Pregnancy and lactation: Tablets:** For this product, no clinical data on pregnancy and lactation are available. Homeopathic dilutions of the substances present in this medicinal product are not known to be toxic during pregnancy and lactation. No adverse effects have so far been reported.

**Effects on ability to drive and use machines: Tablets:** No effects on the ability to drive and use machines have been reported, and none are expected due to the homeopathic dilutions.

**Dosage: Tablets: Standard dosage:** Adults (and children 12 yrs. and older): 1 tablet 3x daily. Pediatric: Below 2 yrs.: 1 tablet 1x daily. 2–5 yrs.: 1 tablet 1–2x daily. 6–11 yrs.: 1 tablet 2x daily. **Acute or initial dosage:** Adults (and children 12 yrs. and older): 1 tablet every ½ to 1 hr., up to 12x daily, and then continue with standard dosage. Pediatric: Below 2 yrs.: 1 tablet every 1 to 2 hrs., up to 3x daily, and then continue with standard dosage. 2–5 yrs.: 1 tablet every 1 to 2 hrs., up to 6x daily, and then continue with standard dosage. 6–11 yrs.: 1 tablet every 1 to 2 hrs., up to 8x daily, and then continue with standard dosage. **Method of administration:** Preferably allow the tablet to dissolve in the mouth, and then swallow. For children it is possible to crush the tablet and add to a small amount of water. This medicine should be taken away from meals.

**Overdose: Tablets:** No cases of overdose have been reported, and none are expected due to the homeopathic dilutions.

**Package sizes: Tablets (9664):** Packs containing 50 and 250 tablets.

**SmPC needs to be adapted locally  
RCP se debe adaptar localmente**

# Echinacea compositum

## Echinacea compositum Resumen de características del producto

### Tablets • Injection solution

**Compositions: Tablets:** 1 Tablet contains: Active ingredients: Bryonia D4 0.3 mg, Echinacea D2 0.9 mg, Lachesis D10 0.3 mg, Matricaria recutita D6 0.3 mg, Phytolacca americana D4 0.3 mg, Rhus toxicodendron D4 0.3 mg, Thuja occidentalis D4 0.3 mg, Hepar sulfuris D8 0.3 mg. Excipients: Lactose monohydrate 299.7 mg, Magnesium stearate 1.5 mg. Contains lactose!

**Injection solution:** 1 ampoule = 2.2 g contains: Active ingredients: Acidum arsenicosum D8 22.0 mg, Aconitum napellus D3 22.0 mg, Argentum nitricum D8 22.0 mg, Arnica montana D4 22.0 mg, Baptisia tinctoria D4 22.0 mg, Bryonia D6 22.0 mg, Cortisolum aceticum D13 22.0 mg, Echinacea D5 22.0 mg, Eupatorium perfoliatum D6 22.0 mg, Euphorbium D6 22.0 mg, Galium sempervirens D6 22.0 mg, Hepar sulfuris D10 22.0 mg, Hydrargyrum bichloratum D8 22.0 mg, Lachesis D10 22.0 mg, Magnesium phosphoricum D6 22.0 mg, Phytolacca americana D6 22.0 mg, Pulsatilla pratensis D8 22.0 mg, Rhus toxicodendron D4 22.0 mg, Sanguinaria canadensis D5 22.0 mg, Sulfur D8 22.0 mg, Thuja occidentalis D8 22.0 mg, Zincum metallicum D10 22.0 mg. Excipients: Sodium chloride 18.5 – 19.7 mg, Water for injections 1.716,0 mg.

**Indications: Tablets, Injection solution:** Stimulation of the body's intrinsic defense system. Cases of inflammations and infections of all tissues and organs.

**Contraindications: Tablets, Injection solution:** Known allergy (hypersensitivity) to one or more of the ingredients.

**Special warnings and special precautions for use: Tablets:** Patients with rare hereditary problems of galactose intolerance, Lapp lactase deficiency or glucose-galactose malabsorption should not take this medicinal product. **Injection solution:** None.

**Side effects: Tablets, Injection solution:** Like all medicinal products, this homeopathic medicinal product can cause side effects, although not everybody gets them.

**Interactions with other medication: Tablets, Injection solution:** No interactions have been reported, and none are expected due to the homeopathic dilutions.

**Pregnancy and lactation: Tablets, Injection solution:** For this product no clinical data on pregnancy and lactation are available. Homeopathic dilutions of the substances present in this medicament are not known to be toxic during pregnancy and lactation. No adverse effects have so far been reported.

**Effects on ability to drive and use machines: Tablets, Injection solution:** No effects on the ability to drive and use machines have been reported, and none are expected due to the homeopathic dilutions.

**Dosage: Tablets: Standard Dosage:** Adults (and children 12 yrs. and older): 1 tablet 3x daily. Pediatric: Below 2 yrs.: 1 tablet 1x daily. 2–5 yrs.: 1 tablet 1–2x daily. 6–11 yrs.: 1 tablet 2x daily. **Acute or Initial Dosage:** Adults (and children 12 yrs. and older): 1 tablet every ½ to 1 hr., up to 12x daily, and then continue with standard dosage. Pediatric: Below 2 yrs.: 1 tablet every 1 to 2 hrs., up to 4x daily, and then continue with standard dosage. 2–5 yrs.: 1 tablet every 1 to 2 hrs.: up to 6x daily, and then continue with standard dosage. 6–11 yrs.: 1 tablet every 1 to 2 hrs., up to 8x daily, and then continue with standard dosage. **Method of administration:** Preferably allow the tablet to dissolve in the mouth, and then swallow. For children it is possible to crush the tablet and add to a small amount of water. This medicine should be taken away from meals. **Injection solution: Standard dosage:** Adults (and children 12 yrs. and older): 1 ampoule 1 to 3x weekly. Pediatric: 2–5 yrs.: ½ ampoule 1 to 3x weekly. 6–11 yrs.: ⅓ of an ampoule 1 to 3x weekly. **Method of administration:** Echinacea comp., Solution for injection may be administered by the s.c., i.d., i.m. or i.v. route.

**Overdose: Tablets, Injection solution:** No cases of overdose have been reported, and none are expected due to the homeopathic dilutions.

**Package sizes: Tablets (9820):** Packs containing 50 and 250 tablets.

**Injection solution (52729):** Packs containing 5, 10, 50 and 100 ampoules of 2.2 ml.

SMPC needs to be adapted locally  
RCP se debe adaptar localmente



Engystol®

## Resumen de características del producto

### Tablets • Injection solution

**Compositions: Tablets:** 1 tabl. contains: Active ingredients: Sulfur D4 37.5 mg, Sulfur D10 37.5 mg, Vincetoxicum hirundinaria D6 75.0 mg, Vincetoxicum hirundinaria D10 75.0 mg, Vincetoxicum hirundinaria D30 75.0 mg. Excipients: Magnesium stearate 1.5 mg.

Contains lactose!

**Injection solution:** 1 ampoule of 1.1 ml (=1.1 g) contains: Active ingredients: Sulfur D4 3.30 mg, Sulfur D10 3.30 mg, Vincetoxicum hirundinaria D6 6.60 mg, Vincetoxicum hirundinaria D10 6.60 mg, Vincetoxicum hirundinaria D30 6.60 mg. Excipients: Sodium chloride 8.78 mg, Water for injections 1.073.60 mg.

**Indications: Tablets, injection solution:** To reduce severity and duration of symptoms of viral infections, particularly in colds and influenza-like illnesses by supporting the immune system during or in upcoming flu season.

**Contraindications: Tablets, injection solution:** Known allergy (hypersensitivity) to one or more of the ingredients.

**Special warnings and special precautions for use: Tablets:** Patients who have hereditary problems of galactose intolerance, Lapp lactase deficiency or glucose-galactose malabsorption should not take this medicinal product. **Injection solution:** None.

**Side effects: Tablets:** Like all medicinal products, this homeopathic medicinal product can cause side effects, although not everybody gets them. In isolated cases transient skin reactions (e.g. rash, pruritus, erythema) and gastrointestinal complaints (e.g. abdominal pain or discomfort) have been reported. **Injection solution:** Like all medicinal products, this homeopathic medicinal product can cause side effects, although not everybody gets them. In isolated cases transient reactions (e.g. skin allergies, redness/swelling at the injection site) have been reported.

**Interaction with other medicaments: Tablets, injection solution:** No interactions have been reported, and none are expected due to the homeopathic dilutions.

**Pregnancy and lactation: Tablets, injection solution:** For this product no clinical data on pregnancy and lactation are available. Homeopathic dilutions of the substances present in this medicament are not known to be toxic during pregnancy and lactation. No adverse effects have so far been reported.

**Effects on ability to drive and use machines: Tablets, injection solution:** No effects on the ability to drive and use machines have been reported, and none are expected due to the homeopathic dilutions.

**Dosage: Tablets: Standard dosage:** Adults (and children 12 yrs. and older): 1 tablet 3x daily. Below 2 yrs.: 1 tablet 1x daily. 2–5 yrs.: 1 tablet 1–2x daily. 6–11 yrs.: 1 tablet 2x daily. **Acute or initial dosage:** Adults (and children 12 yrs. and older): 1 tablet every ½ to 1 hr., up to 12x daily, and then continue with standard dosage. Below 2 yrs.: 1 tablet every 1 to 2 hrs., up to 4x daily, and then continue with standard dosage. 2–5 yrs.: 1 tablet every 1 to 2 hrs., up to 6x daily, and then continue with standard dosage. 6–11 yrs.: 1 tablet every 1 to 2 hrs. up to 8x daily, and then continue with standard dosage. **Method of administration:** Preferably allow the tablet to dissolve in the mouth, and then swallow. For children it is possible to crush the tablet and add to a small amount of water. This medicine should be taken away from meals. **Injection**

**solution: Standard dosage:** Adults (and children 12 yrs. and older): 1 ampoule 1 to 3x weekly. 2–5 yrs.: ½ ampoule 1 to 3x weekly. 6–11 yrs.: ⅔ of an ampoule 1 to 3x weekly. **Acute or initial dosage:** Adults (and children 12 yrs. and older): 1 ampoule daily, and then continue with standard dosage. 2–5 yrs.: ½ ampoule daily, and then continue with standard dosage. 6–11 yrs.: ⅔ of an ampoule daily, and then continue with standard dosage. **Method of administration:** Injection solution may be administered by the s.c., i.d., i.m. or i.v. route.

**Overdose: Tablets, injection solution:** No cases of overdose have been reported, and none are expected due to the homeopathic dilutions.

**Package sizes: Tablets (9830):** Packs containing 50 and 250 tablets.

**Injection solution (8546):** Packs containing 5, 10, 50 and 100 ampoules of 1.1 ml.

**SMPC needs to be adapted locally  
RCP se debe adaptar localmente**

# Euphorbium compositum

## Euphorbium compositum Resumen de características del producto

### Nasal spray • Oral drops

**Compositions:** *Nasal spray:* 100 g containing: Active ingredients: Euphorbium D4 1,0000 g, Luffa operculata D2 1,0000 g, Pulsatilla pratensis D2 1,0000 g, Argentum nitricum D10 1,0000 g, Hepar sulfuris D10 1,0000 g, Hydrargyrum biiodatum D8 1,0000 g. Excipients: Disodium phosphate dihydrate 0,0200 g, Sodium chloride 0,8800 g, Sodium dihydrogen phosphate dihydrate 0,0628 g, Water for injections 93,0372 g. In isotonic sodium chloride solution. *Oral drops:* 100 g containing: Active ingredients: Argentum nitricum D10 1,0 g, Hepar sulfuris D10 1,0 g, Hydrargyrum biiodatum D8 1,0 g, Luffa operculata D6 1,0 g, Euphorbium D3 1,0 g, Pulsatilla pratensis D2 1,0 g. Excipients: Ethanol (96 per cent) 27,2 g, Water, purified 66,8 g, Contains 35 vol-% alcohol.

**Indications:** *Nasal spray, oral drops:* Rhinitis of various origins including infectious, allergic (e.g. hay fever), and rhinitis sicca. Acute or chronic sinusitis.

**Contraindications:** *Nasal spray, oral drops:* Known allergy (hypersensitivity) to one or more of the ingredients.

**Special warnings and special precautions for use:** *Nasal spray:* None. *Oral drops:* This medicinal product contains 35 vol.-% ethanol (alcohol).

**Side effects:** *Nasal spray:* Like all medicinal products, this homeopathic medicinal product can cause side effects, although not everybody gets them. In isolated cases transient local reactions or irritation of the nasal mucosa have been reported.

*Oral drops:* Like all medicinal products, this homeopathic medicinal product can cause side effects, although not everybody gets them.

**Interactions with other medication:** *Nasal spray, oral drops:* No interactions have been reported, and none are expected due to the homeopathic dilutions.

**Pregnancy and lactation:** *Nasal spray, oral drops:* For this product no clinical data on pregnancy and lactation are available. Homeopathic dilutions of the substances present in this medicament are not known to be toxic during pregnancy and lactation. No adverse effects have so far been reported.

**Effects on ability to drive and use machines:** *Nasal spray, oral drops:* No effects on the ability to drive and use machines have been reported, and none are expected due to the homeopathic dilutions.

**Dosage:** *Nasal spray: Standard Dosage:* Adults (and children 12 years and older): 1–2 sprays into each nostril 3–5x daily. Pediatric: 2–5 years: 1 spray into each nostril 3–5x daily; 6–11 years: 1 spray into each nostril 3–5x daily. *Acute or Initial Dosage:* Adults (and children 12 years and older): 1–2 sprays into each nostril every ½ to 1 hr. for the first day up to 8x, and then continue with standard dosage. Pediatric: 2–5 years: 1 spray into each nostril every ½ to 1 hr. for the first day up to 6x, and then continue with standard dosage; 6–11 years: 1 spray into each nostril every ½ to 1 hr. for the first day up to 8x, and then continue with standard dosage. *Method of Administration:* For each application, spray the recommended dosage into each nostril. For hygienic reasons it is not recommended to share the use of the same product with others. *Oral drops: Standard Dosage:* Adults (and children 12 years and older): 10 drops 3x daily. Paediatric: Below 2 years: 3 drops 3x daily; 2–5 years: 5 drops 3x daily; 6–11 years: 7 drops 3x daily. *Acute or Initial Dosage:* Adults (and children 12 years and older): 10 drops every ½ to 1 hr., up to 12x daily, and then continue with standard dosage. Paediatric: Below 2 years: 3 drops every ½ to 1 hr., up to 12x daily, and then continue with standard dosage; 2–5 years: 5 drops every ½ to 1 hr., up to 12x daily, and then continue with standard dosage; 6–11 years: 7 drops every ½ to 1 hr., up to 12x daily, and then continue with standard dosage. *Method of Administration:* This medicine should be taken away from meals. For children, add drops to a small amount of water.

**Overdose:** *Nasal spray, oral drops:* No cases of overdose have been reported, and none are expected due to the homeopathic dilutions.

**Package sizes:** *Nasal spray (9965):* Atomiser without propellant, 20 ml.

*Oral drops (9957):* Drop bottles containing 30 and 100 ml.

SMPC needs to be adapted locally  
RCP se debe adaptar localmente

# Gripp-Heel®

## Gripp-Heel®

### Resumen de características del producto

#### Tablets • Injection solution

**Compositions: Tablets:** 301.5 mg contains: Active ingredients: Aconitum napellus D4 120 mg, Bryonia D4 60 mg, Eupatorium perfoliatum D3 30 mg, Lachesis D12 60 mg, Phosphorus D5 30 mg. Excipients: Magnesium stearate 1.5 mg. Contains lactose!

**Injection solution:** 1 ampoule (= 1.1 g) contains: Active ingredients: Aconitum napellus D3 4.4 mg, Bryonia D3 2.2 mg, Lachesis D11 2.2 mg, Eupatorium perfoliatum D2 1.1 mg, Phosphorus D4 1.1 mg. Excipients: Sodium chloride 9.8 mg, Water for injections 100.0 mg.

**Indications: Tablets, injection solution:** For the relief of symptoms related to colds and influenza-like illnesses, such as aches and pains, fever, drowsiness, cough and headache.

**Contraindications: Tablets, injection solution:** Known allergy (hypersensitivity) to one or more of the ingredients.

**Special warnings and special precautions for use: Tablets:** Patients with rare hereditary problems of galactose intolerance, Lapp lactase deficiency or glucose-galactose malabsorption should not take this medicinal product. **Injection solution:** None.

**Side effects: Tablets, injection solution:** Like all medicinal products, this homeopathic medicinal product can cause side effects, although not everybody gets them. In isolated cases transient skin reactions have been reported.

**Interactions with other medication: Tablets, injection solution:** No interactions have been reported, and none are expected due to the homeopathic dilutions.

**Pregnancy and lactation: Tablets, injection solution:** For this product no clinical data on pregnancy and lactation are available.

Homeopathic dilutions of the substances present in this medicament are not known to be toxic during pregnancy and lactation. No adverse effects have so far been reported.

**Effects on ability to drive and use machines: Tablets, injection solution:** No effects on the ability to drive and use machines have been reported, and none are expected due to the homeopathic dilutions.

**Dosage: Tablets: Standard Dosage:** Adults (and children 12 yrs. and older): 1 tablet 3x daily. Pediatric: Below 2 yrs.: 1 tablet 1x daily. 2–5 yrs.: 1 tablet 1–2x daily. 6–11 yrs.: 1 tablet 2x daily. **Acute or Initial Dosage:** Adults (and children 12 yrs. and older): 1 tablet every ½ to 1 hr., up to 12x daily, and then continue with standard dosage. Pediatric: Below 2 yrs.: 1 tablet every 1 to 2 hrs., up to 4x daily, and then continue with standard dosage. 2–5 yrs.: 1 tablet every 1 to 2 hrs.: up to 6x daily, and then continue with standard dosage. 6–11 yrs.: 1 tablet every 1 to 2 hrs., up to 8x daily, and then continue with standard dosage. **Method of administration:** Preferably allow the tablet to dissolve in the mouth, and then swallow. For children it is possible to crush the tablet and add to a small amount of water. This medicine should be taken away from meals. **Injection solution: Standard dosage:** Adults (and children 12 yrs. and older): 1 ampoule 1 to 3x weekly. Pediatric: 2–5 yrs.: ½ ampoule 1 to 3x weekly. 6–11 yrs.: ⅔ of an ampoule 1 to 3x weekly. **Acute or Initial Dosage:** Adults (and children 12 yrs. and older): 1 ampoule daily, and then continue with standard dosage. Pediatric: 2–5 yrs.: ½ ampoule daily, and then continue with standard dosage. 6–11 yrs.: ⅔ of an ampoule daily, and then continue with standard dosage.

**Method of administration:** Gripp-Heel, Solution for injection may be administered by the s.c., i.d., i.m., or i.v. route.

**Overdose: Tablets, injection solution:** No cases of overdose have been reported, and none are expected due to the homeopathic dilutions.

**Package sizes: Tablets (9674):** Packs containing 50 and 250 tablets.

**Injection solution (8549):** Packs containing 5, 10, 50 and 100 ampoules of 1.1 ml.

SMPC needs to be adapted locally  
RCP se debe adaptar localmente



Luffeel®

## Resumen de características del producto

### Tablets • Nasal spray

**Compositions: Tablets:** 301.5 mg contains: Active ingredients: Arsenum iodatum D8 25 mg, Lobelia inflata D6 25 mg, Luffa operculata D12 25 mg, Aralia racemosa D1 25 mg. Excipients: Lactose monohydrate 200 mg, Magnesium stearate 1.5 mg. Contains lactose!

**Nasal spray:** 100 g contains: Active ingredients: Histaminum D12 5 g, Histaminum D30 5 g, Histaminum D200 5 g, Luffa operculata D4 10 g, Luffa operculata D12 10 g, Luffa operculata D30 10 g, Sulfur D12 5 g, Sulfur D30 5 g, Sulfur D200 5 g, Thryallis glauca D4 10 g, Thryallis glauca D12 10 g, Thryallis glauca D30 10 g. Excipients: Benzalkonium chloride solution 0.02 g, Disodium phosphate dihydrate 0.02 g, Sodium chloride 0.72 g, Sodium dihydrogen phosphate dihydrate 0.0628 g, Water purified 9.1772 g. Presented with benzalkonium chloride 0,01 %.

**Indications: Tablets:** Allergic rhinitis, particularly hay fever during pollen season. May also be used to support the preventative management of these conditions. **Nasal spray:** Allergic rhinitis, particularly hay fever.

**Contraindications: Tablets, Nasal spray:** Known allergy (hypersensitivity) to one or more of the ingredients.

**Special warnings and special precautions for use: Tablets:** Patients with rare hereditary problems of galactose intolerance, Lapp lactase deficiency or glucose-galactose malabsorption should not take this medicinal product. **Nasal spray:** Luffeel, Nasal spray contains benzalkonium chloride. May cause irritation of the nasal mucosa.

**Side effects: Tablets:** Like all medicinal products, this homeopathic medicinal product can cause side effects, although not everybody gets them. In isolated cases transient skin reactions have been reported. **Nasal spray:** Like all medicinal products, this homeopathic medicinal product can cause side effects, although not everybody gets them. In isolated cases transient local reactions or irritation of the nasal mucosa have been reported.

**Interactions with other medication: Tablets, Nasal spray:** No interactions have been reported, and none are expected due to the homeopathic dilution.

**Pregnancy and lactation: Tablets, Nasal spray:** For this product no clinical data on pregnancy and lactation are available. Homeopathic dilutions of the substances present in this medicament are not known to be toxic during the pregnancy and lactation. No adverse effects have so far been reported.

**Effects on ability to drive and use machines: Tablets, Nasal spray:** No effects on the ability to drive and use machines have been reported, and none are expected due to the homeopathic dilutions.

**Dosage: Tablets: Standard Dosage:** Adults (and children 12 yrs. and older): 1 tablet 3x daily. Pediatric: Below 2 yrs.: 1 tablet 1x daily. 2–5 yrs.: 1 tablet 1–2x daily. 6–11 yrs.: 1 tablet 2x daily. **Acute or Initial Dosage:** Adults (and children 12 yrs. and older): 1 tablet every ½ to 1 hr., up to 12x daily, and then continue with standard dosage. Pediatric: Below 2 yrs.: 1 tablet every 1 to 2 hrs., up to 4x daily, and then continue with standard dosage. 2–5 yrs.: 1 tablet every 1 to 2 hrs., up to 6x daily, and then continue with standard dosage. 6–11 yrs.: 1 tablet every 1 to 2 hrs., up to 8x daily, and then continue with standard dosage. Preventative (Prophylactic) Dosage: For patients in whom allergy symptoms recur annually, start with the standard dosage one month before the allergy season and continue until two weeks after the end of the critical season. **Method of administration:** Preferably allow the tablet to dissolve in the mouth, and then swallow. For children it is possible to crush the tablet and add a small amount of water. This medicine should be taken away from meals. **Nasal spray: Standard Dosage:** Adults (and children 12 yrs. and older): 1–2 sprays into each nostril 3–5x daily. Pediatric: 2–5 yrs.: 1 spray into each nostril 3–5x daily. 6–11 yrs.: 1 spray into each nostril 3–5x daily. **Acute or Initial Dosage:** Adults (and children 12 yrs. and older): 1–2 sprays into each nostril every ½ to 1 hr. for the first day up to 8x, and then continue with standard dosage. Pediatric: 2–5 yrs.: 1 spray into each nostril every ½ to 1 hr. for the first day up to 6x, and then continue with standard dosage. 6–11 yrs.: 1 spray into each nostril every ½ to 1 hr. for the first day up to 8x, and then continue with standard dosage. **Method of administration:** For each application, spray the recommended dosage into each nostril. For hygienic reasons it is not recommended to share the use of the same product with others.

**Overdose: Tablets, Nasal spray:** No cases of overdose have been reported, and none are expected due to the homeopathic dilutions.

**Package sizes: Tablets (9831):** Packs containing 50 and 250 tablets.

**Nasal spray (9864):** Atomiser without propellant, 20 ml.

SMPC needs to be adapted locally  
RCP se debe adaptar localmente



# Lymphomyosot®

## Lymphomyosot®

### Resumen de características del producto

#### Tablets • Drops • Injection solution

**Compositions:** **Tablets:** 1 tablet = 301.5 mg containing: Active ingredients: Araneus diadematus D6 15.0 mg, Calcium phosphoricum D12 15.0 mg, Equisetum hiemale D4 15.0 mg, Ferrum iodatum D12 30.0 mg, Fumaria officinalis D4 15.0 mg, Gentiana lutea D5 15.0 mg, Geranium robertianum D4 30.0 mg, Juglans regia ssp. regia D3 15.0 mg, Levothyroxinum D12 15.0 mg, Myosotis arvensis D3 15.0 mg, Nasturtium officinale D4 30.0 mg, Natrium sulfuricum D4 15.0 mg, Pinus sylvestris D4 15.0 mg, Scrophularia nodosa D3 15.0 mg, Smilax D6 15.0 mg, Teucrium scorodonia D3 15.0 mg, Veronica officinalis D3 15.0 mg. Excipients: Magnesium stearate 1,5 mg. **Contains lactose!** **Drops:** 100 g containing: Active ingredients: Araneus diadematus D6 5.0 g, Calcium phosphoricum D12 5.0 g, Equisetum hiemale D4 5.0 g, Ferrum iodatum D12 10.0 g, Fumaria officinalis D4 5.0 g, Gentiana lutea D5 5.0 g, Geranium robertianum D4 10.0 g, Juglans regia ssp. regia D3 5.0 g, Levothyroxinum D12 5.0 g, Myosotis arvensis D3 5.0 g, Nasturtium officinale D4 10.0 g, Natrium sulfuricum D4 5.0 g, Pinus sylvestris D4 5.0 g, Scrophularia nodosa D3 5.0 g, Smilax D6 5.0 g, Teucrium scorodonia D3 5.0 g, Veronica officinalis D3 5.0 g. Excipients: Contains 35 vol.-% alcohol. **Injection solution:** 1.1 g containing: Active ingredients: Araneus diadematus D6 0.1 mg, Calcium phosphoricum D12 0.55 mg, Equisetum hiemale D4 0.55 mg, Ferrum iodatum D12 1.10 mg, Fumaria officinalis D4 0.55 mg, Gentiana lutea D5 0.55 mg, Geranium robertianum D4 1.10 mg, Juglans regia ssp. regia D3 0.55 mg, Levothyroxinum D12 0.55 mg, Myosotis arvensis D3 0.55 mg, Nasturtium officinale D4 1.10 mg, Natrium sulfuricum D4 0.55 mg, Pinus sylvestris D4 0.55 mg, Scrophularia nodosa D3 0.55 mg, Smilax D6 0.55 mg, Teucrium scorodonia D3 0.55 mg, Veronica officinalis D3 0.55 mg. Excipients: Sodium chloride 10.3 mg, water for injections 1089 mg.

**Indications:** **Tablets, Drops, injection solution:** Improvement of lymphatic drainage, the non-specific immune defense, and conditions such as benign hypertrophy of lymph nodes, chronic tonsillitis, tonsillar hypertrophy and lymphatic edema.

**Contraindications:** **Tablets, Drops, injection solution:** Known allergy (hypersensitivity) to one or more of the ingredients.

**Special warnings and special precautions for use:** **Tablets:** Patients with rare hereditary problems of galactose intolerance, Lapp lactase deficiency or glucose/galactose malabsorption should not take this medicinal product. **Drops:** This medicinal product contains 35 vol.-% ethanol (alcohol). **Injection solution:** None.

**Side effects:** **Tablets:** Like all medicinal products, this homeopathic medicinal product can cause side effects, although not everybody gets them. **Drops, injection solution:** Like all medicinal products, this homeopathic medicinal product can cause side effects, although not everybody gets them. In isolated cases transient allergic skin reactions have been reported.

**Interactions with other medication:** **Tablets, injection solution:** No interactions have been reported, and none are expected due to the homeopathic dilutions. **Drops:** This medicine has no or negligible influence on the ability to drive and use machines.

**Pregnancy and lactation:** **Tablets, Drops, injection solution:** For this product no clinical data on pregnancy and lactation are available. Homeopathic dilutions of the substances present in this medication are not known to be toxic during pregnancy and lactation. No adverse effects have so far been reported.

**Effects on ability to drive and use machines:** **Tablets, injection solution:** No effects on the ability to drive and use machines have been reported, and none are expected due to the homeopathic dilutions. **Drops:** This medicine has no or negligible influence on the ability to drive and use machines.

**Dosage:** **Tablets:** **Standard dosage:** Adults (and children 12 yrs. and older): 1 tablet 3x daily. Pediatric: Below 2 yrs.: 1 tablet 1x daily. 2–5 yrs.: 1 tablet 1–2x daily. 6–11 yrs.: 1 tablet 2x daily. **Acute or initial dosage:** Adults (and children 12 yrs. and older): 1 tablet every ½ to 1 hr., up to 12x daily, and then continue with standard dosage. Pediatric: Below 2 yrs.: 1 tablet every 1 to 2 hrs., up to 4x daily, and then continue with standard dosage. 2–5 yrs.: 1 tablet every 1 to 2 hrs., up to 6x daily, and then continue with standard dosage. 6–11 yrs.: 1 tablet every 1 to 2 hrs., up to 8x daily, and then continue with standard dosage. **Method of administration:** Preferably allow the tablet to dissolve in the mouth, and then swallow. For children it is possible to crush the tablet and add to a small amount of water. This medicine should be taken away from meals. **Drops:** **Standard dosage:** Adults (and children 12 yrs. and older): 10 drops 3x daily. Pediatric: Below 2 yrs.: 3 drops 3x daily. 2–5 yrs.: 5 drops 3x daily. 6–11 yrs.: 7 drops 3x daily. **Acute or initial dosage:** Adults (and children 12 yrs. and older): 10 drops every ½ to 1 hr., up to 12x daily, and then continue with standard dosage. Pediatric: Below 2 yrs.: 3 drops every ½ to 1 hr., up to 12x daily, and then continue with standard dosage. 2–5 yrs.: 5 drops every ½ to 1 hr., up to 12x daily, and then continue with standard dosage. 6–11 yrs.: 7 drops every ½ to 1 hr., up to 12x daily, and then continue with standard dosage.

**Method of administration:** This medicine should be taken away from meals. For children, add drops to a small amount of water.

**Injection solution:** **Standard dosage:** Adults (and children 12 yrs. and older): 1 ampoule 1 to 3x weekly. Pediatric: 2–5 yrs.: ½ ampoule 1 to 3x weekly. 6–11 yrs.: ⅓ of an ampoule 1 to 3x weekly. **Acute or initial dosage:** Adults (and children 12 yrs. and older): 1 ampoule daily, and then continue with standard dosage. Pediatric: 2–5 yrs.: ½ ampoule daily, and then continue with standard dosage. 6–11 yrs.: ⅓ of an ampoule daily, and then continue with standard dosage. **Method of administration:** Lymphomyosot, Solution for injection may be administered by the s.c., i.d., i.m. or i.v. route.

**Overdose:** **Tablets, Drops, injection solution:** No cases of overdose have been reported, and none are expected due to the homeopathic dilutions.

**Package sizes:** **Tablets (9832):** Packs containing 50, 100 and 250 tablets.

**Drops (9780):** Drop bottles containing 30 ml and 100 ml.

**Injection solution (8553):** Packs containing 5, 10, 50 and 100 ampoules of 1.1 ml each.

SMPC needs to be adapted locally  
RCP se debe adaptar localmente

# Mucosa compositum

## Mucosa compositum Resumen de características del producto

### Tablets • Injection solution

**Compositions: Tablets:** 1 tablet containing: Active ingredients: Argentum nitricum D6 1.0 mg, Atropa bella-donna D10 1.0 mg, Ceanothus americanus D4 1.0 mg, Hydrastis canadensis D6 1.0 mg, Kalium bichromicum D8 1.0 mg, Kreosotum D12 1.0 mg, Lachesis D10 1.0 mg, Mandragora e radice siccata D10 1.0 mg, Marsdenia cundurango D6 1.0 mg, Momordica balsamina D6 1.0 mg, Mucosa coli suis D8 1.0 mg, Mucosa ductus choledochi suis D8 1.0 mg, Mucosa duodeni suis D8 1.0 mg, Mucosa ilei suis D8 1.0 mg, Mucosa jejuni suis D8 1.0 mg, Mucosa nasalis suis D8 1.0 mg, Mucosa oculi suis D8 1.0 mg, Mucosa oesophagi suis D8 1.0 mg, Mucosa pylori suis D8 1.0 mg, Mucosa recti suis D8 1.0 mg, Mucosa vesicae felleae suis D8 1.0 mg, Mucosa vesicae urinariae suis D8 1.0 mg, Oxalis acetosella D6 1.0 mg, Pankreas suis D10 1.0 mg, Phosphorus D8 1.0 mg, Psychotria ipecacuanha D8 1.0 mg, Pulsatilla pratensis D6 1.0 mg, Semecarpus anacardium D6 1.0 mg, Strychnos nux-vomica D8 1.0 mg, Sulfur D8 1.0 mg, Ventriculus suis D8 1.0 mg, Veratrum album D6 1.0 mg. Excipients: Lactose monohydrate 26.0 mg, Magnesium stearate 1.0 mg. **Contains lactose!**

**Injection solution:** 1 ampoule of 2.2 g containing: Active ingredients: Argentum nitricum D6 22.0 mg, Atropa bella-donna D10 22.0 mg, Ceanothus americanus D4 22.0 mg, Colibacillinum Nussle D22 22.0 mg, Hydrastis canadensis D4 22.0 mg, Kalium bichromicum D8 22.0 mg, Kreosotum D10 22.0 mg, Lachesis D10 22.0 mg, Mandragora e radice siccata D10 22.0 mg, Marsdenia cundurango D6 22.0 mg, Momordica balsamina D6 22.0 mg, Mucosa coli suis D8 22.0 mg, Mucosa ductus choledochi suis D8 22.0 mg, Mucosa duodeni suis D8 22.0 mg, Mucosa ilei suis D8 22.0 mg, Mucosa jejuni suis D8 22.0 mg, Mucosa nasalis suis D8 22.0 mg, Mucosa oculi suis D8 22.0 mg, Mucosa oesophagi suis D8 22.0 mg, Mucosa oris suis D8 22.0 mg, Mucosa pulmonis suis D8 22.0 mg, Mucosa pylori suis D8 22.0 mg, Mucosa recti suis D8 22.0 mg, Mucosa vesicae felleae suis D8 22.0 mg, Mucosa vesicae urinariae suis D8 22.0 mg, Oxalis acetosella D6 22.0 mg, Pankreas suis D10 22.0 mg, Phosphorus D8 22.0 mg, Psychotria ipecacuanha D8 22.0 mg, Pulsatilla pratensis D6 22.0 mg, Semecarpus anacardium D6 22.0 mg, Strychnos nux-vomica D8 22.0 mg, Sulfur D8 22.0 mg, Ventriculus suis D8 22.0 mg, Veratrum album D4 22.0 mg, Natrium diethyloxalacetatum D8 22.0 mg. Excipients: Sodium chloride 19.1 mg, water for injections 1408.0 mg.

**Indications: Tablets, injection solution:** Disorders of mucous membranes (gastrointestinal, respiratory and genitourinary system and the eye).

**Contraindications: Tablets, injection solution:** Known allergy (hypersensitivity) to one or more of the ingredients.

Special warnings and special precautions for use: **Tablets:** Patients with rare hereditary problems of galactose intolerance, Lapp lactase deficiency or glucose-galactose malabsorption should not take this medicinal product. **Injection solution:** None.

**Side effects: Tablets:** Like all medicinal products, this homeopathic medicinal product can cause side effects, although not everybody gets them. **Injection solution:** Like all medicinal products, this homeopathic medicinal product can cause side effects, although not everybody gets them. In isolated cases transient skin reactions have been reported.

**Interactions with other medication: Tablets, injection solution:** No interactions have been reported, and none are expected due to the homeopathic dilutions.

**Pregnancy and lactation: Tablets, injection solution:** For this product no clinical data on pregnancy and lactation are available. Homeopathic dilutions of the substances present in this medicament are not known to be toxic during pregnancy and lactation. No adverse effects have so far been reported.

**Effects on ability to drive and use machines: Tablets, injection solution:** No effects on the ability to drive and use machines have been reported, and none are expected due to the homeopathic dilutions.

**Dosage: Tablets: Standard dosage:** Adults (and children 12 yrs. and older): 1 tablet 3x daily. Pediatric: Below 2 yrs.: 1 tablet 1x daily.

2–5 yrs.: 1 tablet 1–2x daily. 6–11 yrs.: 1 tablet 2x daily. **Acute or initial dosage:** Adults (and children 12 yrs. and older): 1 tablet every ½ to 1 hr., up to 12x daily, and then continue with standard dosage. Pediatric: Below 2 yrs.: 1 tablet every 1 to 2 hrs., up to 4x daily, and then continue with standard dosage. 2–5 yrs.: 1 tablet every 1 to 2 hrs., up to 6x daily, and then continue with standard dosage. 6–11 yrs.: 1 tablet every 1 to 2 hrs., up to 8x daily, and then continue with standard dosage. **Method of administration:** Preferably allow the tablet to dissolve in the mouth, and then swallow. For children it is possible to crush the tablet and add to a small amount of water. This medicine should be taken away from meals. **Injection solution: Standard dosage:** Adults (and children 12 yrs. and older): 1 ampoule 1 to 3x weekly. Pediatric: 2–5 yrs.: ½ ampoule 1 to 3x weekly. 6–11 yrs.: ⅓ of an ampoule 1 to 3x weekly. **Method of administration:**

Mucosa comp.-Heel, Solution for injection may be administered by the s.c., i.d., i.m. or i.v. route.

**Overdose: Tablets, injection solution:** No cases of overdose have been reported, and none are expected due to the homeopathic dilutions.

**Package sizes: Tablets (52268):** Packs containing 50 and 250 tablets.

**Injection solution (8526):** Packs containing 5, 10, 50 and 100 ampoules of 2.2 ml each.



## Oteel

### Resumen de características del producto

#### Ear drops

**Compositions: Ear drops:** 1 vial (0.45 ml) contains: Active ingredients: Achillea millefolium D3 0.99 mg, Matricaria recutita D3 0.99 mg, Symphytum officinale D6 0.99 mg, Aconitum napellus D2 0.954 mg, Atropa bella-donna D2 0.99 mg, Bellis perennis D2 0.495 mg, Calendula officinalis D2 0.99 mg, Echinacea D2 0.2475 mg, Echinacea purpurea D2 0.2475 mg, Hypericum perforatum D2 0.297 mg, Hepar sulfuris D6 0.99 mg, Mercurius solubilis Hahnemanni D6 0.495 mg, Hamamelis virginiana D1 0.099 mg, Arnica montana D2 0.99 mg. Excipients: Sodium chloride 3.46-3.75 mg, Water for injections 440.2350 mg.

**Indications: Ear drops:** Local (external) supportive treatment of earaches in general, as in conditions such as otitis media and/or inflammations of the external ear.

**Contraindications: Ear drops:** Known allergy (hypersensitivity) to one or more of the ingredients.

**Special warnings and special precautions for use: Ear drops:** None.

**Side effects: Ear drops:** Like all medicinal products, this homeopathic medicinal product may cause side effects, although not everybody gets them.

**Interactions with other medication: Ear drops:** No interactions have been reported, and none are expected due to the homeopathic dilutions.

**Pregnancy and lactation: Ear drops:** For this product, clinical data on pregnancy and lactation are available. Homeopathic dilutions of the substances present in this medication are not known to be toxic during pregnancy and lactation. No adverse effects have so far been reported.

**Effects on ability to drive and use machines: Ear drops:** No effects on the ability to drive and use machines have been reported, and none are expected due to the homeopathic dilutions.

**Dosage: Ear drops: Standard Dosage:** Adults (and children 12 yrs. and older): 3–4 drops 4x daily, or more often if needed. Pediatric: Below 2 yrs.: 1–2 drops 4x daily as directed [consult a healthcare professional before use]. 2–5 yrs.: 2 drops 4x daily, or more often if needed. 6–11 yrs.: 3 drops 4x daily, or more often if needed. **Method of administration:** For external use only. Instill into the external ear canal.

#### Instructions for use:

1. Only open the vial directly before use.
2. Separate the vial by turning and pulling off the strip.
3. Warm the vial to body temperature by holding it in the palm of your hand for about one minute.
4. To open twist the upper part of the vial.
5. Tilt the head sideways. Instill the fluid into the ear canal by pressing lightly on the upper part of the vial. Close the ear canal with some cotton wool in order to prevent the fluid from flowing back out.
6. Discard remaining contents of vial after each application.

**Overdose: Ear drops:** No cases of overdose have been reported, and none are expected due to the homeopathic dilutions and external use.

**Package sizes: Ear drops (12737):** Available in packages of 10 sterile vials of 0.45 ml each.

**SmPC needs to be adapted locally  
RCP se debe adaptar localmente**

# Phosphor-Homaccord®

## Phosphor-Homaccord® Resumen de características del producto

### Drops • Injection solution

**Compositions: Drops:** 100g contains: Active ingredients: Argentum nitricum D10 0.3 g, Argentum nitricum D30 0.3 g, Argentum nitricum D200 0.3 g, Paris quadrifolia D6 0.3 g, Paris quadrifolia D10 0.3 g, Paris quadrifolia D30 0.3 g, Paris quadrifolia D200 0.3 g, Phosphorus D10 0.4 g, Phosphorus D30 0.4 g, Phosphorus D200 0.4 g. Excipients: Ethanol (96 per cent) 29.1 g, Water, purified 67.6 g. Contains 35 vol.-% alcohol. **Injection solution:** 1 ampoule = 1.1 g contains: Active ingredients: Argentum nitricum D10 3.3 mg, Argentum nitricum D30 3.3 mg, Argentum nitricum D200 3.3 mg, Paris quadrifolia D6 3.3 mg, Paris quadrifolia D10 3.3 mg, Paris quadrifolia D30 3.3 mg, Paris quadrifolia D200 3.3 mg, Phosphorus D10 4.4 mg, Phosphorus D30 4.4 mg, Phosphorus D200 4.4 mg. Excipients: Sodium chloride 10.3 mg, Water for injections 1063.7 mg.

**Indications: Drops, injection solution:** Hoarseness especially due to respiratory tract infections, e.g. laryngitis.

**Contraindications: Drops, injection solution:** Known allergy (hypersensitivity) to one or more of the ingredients.

**Special warnings and special precautions for use: Drops:** This medicinal product contains 35 vol.-% ethanol (alcohol).

**Injection solution:** None.

**Side effects: Drops, injection solution:** Like all medicinal products, this homeopathic medicinal product can cause side effects, although not everybody gets them.

**Interactions with other medicinal products: Drops, injection solution:** No interactions have been reported, and none are expected due to the homeopathic dilutions.

**Pregnancy and lactation: Drops, injection solution:** For this product no clinical data on pregnancy and lactation are available. Homeopathic dilutions of the substances present in this medicament are not known to be toxic during pregnancy and lactation. No adverse effects have so far been reported.

**Effects on ability to drive and use machines: Drops, injection solution:** No effects on the ability to drive and use machines have been reported, and none are expected due to the homeopathic dilutions.

**Dosage: Drops: Standard Dosage:** Adults (and children 12 yrs. and older): 10 drops 3x daily. Pediatric: Below 2 yrs.: 3 drops 3x daily. 2–5 yrs.: 5 drops 3x daily. 6–11 yrs.: 7 drops 3x daily. **Acute or Initial Dosage:** Adults (and children 12 yrs. and older): 10 drops every ½ to 1 hr., up to 12x daily, and then continue with standard dosage. Pediatric: Below 2 yrs.: 3 drops every ½ to 1 hr., up to 12x daily, and then continue with standard dosage. 2–5 yrs.: 5 drops every ½ to 1 hr., up to 12x daily, and then continue with standard dosage. 6–11 yrs.: 7 drops every ½ to 1 hr., up to 12x daily, and then continue with standard dosage.

**Method of administration:** This medicine should be taken away from meals. For children, add drops to a small amount of water. **Injection solution: Standard Dosage:** Adults (and children 12 yrs. and older): 1 ampoule 1 to 3x weekly. Pediatric: 2–5 yrs.: ½ ampoule 1 to 3x weekly. 6–11 yrs.: ⅔ of an ampoule 1 to 3x weekly. **Acute or Initial Dosage:** Adults (and children 12 yrs. and older): 1 ampoule daily, and then continue with standard dosage. Pediatric: 2–5 yrs.: ½ ampoule daily, and then continue with standard dosage. 6–11 yrs.: ⅔ of an ampoule daily, and then continue with standard dosage.

**Method of administration:** Phosphor-Homaccord, Solution for injection may be administered by the s.c., i.d., i.m., or i.v. route.

**Overdose: Drops, injection solution:** No cases of overdose have been reported, and none are expected due to the homeopathic dilutions.

**Package sizes: Drops (9787):** Drop bottles containing 30 and 100 ml.

**Injection solution (8588):** Packs containing 5, 10, 50 and 100 ampoules of 1.1 ml.

SmPC needs to be adapted locally  
RCP se debe adaptar localmente

# Tartephedreel®

## Tartephedreel®

### Resumen de características del producto

#### Drops

**Compositions: Drops:** Compositions: 100 g contains: Active ingredients: Arsenum iodatum D6 10 g, Aspidosperma quebracho-blanco D5 10,0 g, Atropa bella-donna D4 10 g, Blatta orientalis D6 5 g, Ephedra distachya D3 5,0 g, Hepatica nobilis D3 10,0 g, Illicium verum D3 5 g, Kalium stibyltartaricum D4 10 g, Lobelia inflata D4 5 g, Naphthalinum D6 5 g, Natrium sulfuricum D4 10 g, Psychotria ipecacuanha D4 5 g, Medorrhinum Nosode D8 5,0 g, Stachys officinalis D2 5,0 g. Excipients: Contains 35 vol.-% alcohol.

**Indications:** Relieves spasmodic cough; eases expectoration.

**Contraindications:** Known allergy (hypersensitivity) to one or more of the ingredients.

**Special warnings and special precautions for use:** This medicinal product contains 35 vol.-% ethanol (alcohol).

**Side effects: Drops:** Like all medicinal products, this homeopathic medicinal product can cause side effects, although not everybody gets them.

**Interactions with other medication:** No interactions have been reported, and none are expected due to the homeopathic dilutions.

**Pregnancy and lactation:** For this product no clinical data on pregnancy and lactation are available. Homeopathic dilutions of the substances present in this medicament are not known to be toxic during pregnancy and lactation. No adverse effects have so far been reported.

**Effects on ability to drive and use machines:** No effects on the ability to drive and use machines have been reported, and none are expected due to the homeopathic dilutions.

**Dosage: Drops: Standard Dosage:** Adults (and children 12 yrs. and older): 10 drops 3x daily. Pediatric: Below 2 yrs.: 3 drops 3x daily. 2–5 yrs.: 5 drops 3x daily. 6–11 yrs.: 7 drops 3x daily. **Acute or Initial Dosage:** Adults (and children 12 yrs. and older): 10 drops every ½ to 1 hr., up to 12x daily, and then continue with standard dosage. Pediatric: Below 2 yrs.: 3 drops every ½ to 1 hr., up to 12x daily, and then continue with standard dosage. 2–5 yrs.: 5 drops every ½ to 1 hr., up to 12x daily, and then continue with standard dosage. 6–11 yrs.: 7 drops every ½ to 1 hr., up to 12x daily, and then continue with standard dosage.

**Method of administration:** This medicine should be taken away from meals. For children, add drops to a small amount of water.

**Overdose:** No cases of overdose have been reported, and none are expected due to the homeopathic dilutions.

**Package sizes (9803):** Drop bottles containing 30 and 100 ml.

**SmPC needs to be adapted locally  
RCP se debe adaptar localmente**

# Tonsilla compositum

## Tonsilla compositum

### Resumen de características del producto

#### Oral drops • Injection solution

**Compositions:** *Oral drops:* 100 g contain: Active ingredients: Acidum ascorbicum D6 3,0 g, Acidum L(+)-lacticum D6 3,0 g, Aesculus hippocastanum D6 3,0 g, Barium carbonicum D28 3,0 g, Calcium phosphoricum D10 3,0 g, Conium maculatum D12 3,0 g, Cortisonum aceticum D13 3,0 g, Dactylopius coccus D6 3,0 g, Echinacea D4 3,0 g, Ferrum phosphoricum D10 3,0 g, Galium aparine D6 3,0 g, Gentiana lutea D6 3,0 g, Geranium robertianum D6 3,0 g, Kalium stibyltartaricum D6 3,0 g, Levothyroxinum D13 3,0 g, Mercurius solubilis Hahnemannii D13 3,0 g, Pulsatilla pratensis D6 3,0 g, Solanum dulcamara D4 3,0 g, Sulfur D8 3,0 g, Cortex glandulae suprarenalis suis D13 3,0 g, Embryo totalis suis D13 3,0 g, Funiculus umbilicalis suis D10 3,0 g, Hepar suis D10 3,0 g, Hypothalamus suis D10 3,0 g, Medulla ossis suis D10 3,0 g, Nodus lymphaticus suis D8 3,0 g, Splen suis D10 3,0 g, Tonsilla suis D28 3,0 g. Excipients: Ethanol (96 per cent) 0,3 g, Water, purified 15,7 g. Contains 35 vol.-% alcohol. *Injection solution:* 1 ampoule (2,2 ml) contains: Active ingredients: Acidum ascorbicum D6 22.0 mg, Acidum L(+)-lacticum D6 22.0 mg, Aesculus hippocastanum D6 22.0 mg, Barium carbonicum D28 22.0 mg, Calcium phosphoricum D10 22.0 mg, Conium maculatum D4 22.0 mg, Cortex glandulae suprarenalis suis D13 22.0 mg, Cortisonum aceticum D13 22.0 mg, Dactylopius coccus D6 22.0 mg, Echinacea D4 22.0 mg, Embryo totalis suis D13 22.0 mg, Ferrum phosphoricum D10 22.0 mg, Funiculus umbilicalis suis D10 22.0 mg, Galium aparine D6 22.0 mg, Gentiana lutea D6 22.0 mg, Geranium robertianum D6 22.0 mg, Hepar suis D10 22.0 mg, Hypothalamus suis D10 22.0 mg, Kalium stibyltartaricum D6 22.0 mg, Levothyroxinum D13 22.0 mg, Medulla ossis suis D10 22.0 mg, Mercurius solubilis Hahnemannii D13 22.0 mg, Nodus lymphaticus suis D8 22.0 mg, Psorinum Nosode D 28 22.0 mg, Pulsatilla pratensis D6 22.0 mg, Pulvis genium nosode D 198 22.0 mg, Solanum dulcamara D4 22.0 mg, Splen suis D10 22.0 mg, Sulfur D8 22.0 mg, Tonsilla suis D28 22.0 mg. Excipients: Sodium chloride 19.2 mg, water for injections 1540 mg.

**Indications:** *Oral drops, injection solution:* Stimulation of the body defenses including the lymphatic immune system in acute, recurrent and chronic disorders, e.g. tonsillitis, recurrent infections.

**Contraindications:** *Oral drops, injection solution:* Known allergy (hypersensitivity) to one or more of the ingredients.

**Special warnings and special precautions for use:** *Oral drops:* This medicinal product contains 35 vol.-% ethanol (alcohol). *Injection solution:* None.

**Side effects:** *Oral drops, injection solution:* Like all medicinal products, this homeopathic medicinal product can cause side effects, although not everybody gets them.

**Interactions with other medication:** *Oral drops, injection solution:* No interactions have been reported, and none are expected due to the homeopathic dilutions.

**Pregnancy and lactation:** *Oral drops, injection solution:* For this product no clinical data on pregnancy and lactation are available. Homeopathic dilutions of the substances present in this medicament are not known to be toxic during pregnancy and lactation. No adverse effects have so far been reported.

**Effects on ability to drive and use machines:** *Oral drops:* This medicine has no or negligible influence on the ability to drive and use machines. *Injection solution:* No effects on the ability to drive and use machines have been reported, and none are expected due to the homeopathic dilutions.

**Dosage:** *Oral drops: Standard dosage:* Adults (and children 12 yrs. and older): 10 drops 3x daily. Pediatric: Below 2 yrs.: 3 drops 3x daily. 2–5 yrs.: 5 drops 3x daily. 6–11 yrs.: 7 drops 3x daily. *Acute or initial dosage:* Adults (and children 12 yrs. and older): 10 drops every ½ to 1 hr., up to 12x daily, and then continue with standard dosage. Pediatric: Below 2 yrs.: 3 drops every ½ to 1 hr., up to 12x daily, and then continue with standard dosage. 2–5 yrs.: 5 drops every ½ to 1 hr., up to 12x daily, and then continue with standard dosage. 6–11 yrs.: 7 drops every ½ to 1 hr., up to 12x daily, and then continue with standard dosage.

**Method of administration:** This medicine should be taken away from meals. For children, add drops to a small amount of water.

*Injection solution: Standard dosage:* Adults (and children 12 yrs. and older): 1 ampoule 1 to 3x weekly. Pediatric: 2–5 yrs.: ½ ampoule 1 to 3x weekly. 6–11 yrs.: ⅓ of an ampoule 1 to 3x weekly. **Method of administration:** Tonsilla comp., Solution for injection may be administered by the s.c., i.d., i.m. or i.v. route.

**Overdose:** *Oral drops, injection solution:* No cases of overdose have been reported, and none are expected due to the homeopathic dilutions.

**Package sizes:** *Oral drops (65636):* Packs containing 30 ml and 100 ml.

*Injection solution (8538):* Packs containing 5, 10, 50 and 100 ampoules of 2.2 ml each.

SMPC needs to be adapted locally  
RCP se debe adaptar localmente





Viburcol®  
Resumen de características del producto

**Suppositories**

**Compositions: 1 suppository of 1.1 g contains:** Active Ingredients: Atropa bella-donna D2 1,100 mg, Calcium carbonicum Hahnemanni D8 4,400 mg, Matricaria recutita D1 1,100 mg, Plantago major D3 1,100 mg, Pulsatilla pratensis D2 2,200 mg, Solanum dulcamara D4 1,100 mg, Excipients: Hard fat 1.089,000 mg

**Indications:** Conditions of restlessness and irritability with or without fever, especially in infants and children (e.g. during teething, mild abdominal pain, sleeplessness). Symptomatic treatment of common infections.

**Contraindications:** Known allergy (hypersensitivity) to one or more of the ingredients.

**Special warnings and special precautions for use:** None

**Side effects:** Like all medicinal products, this homeopathic medicinal product can cause side effects, although not everybody gets them. In isolated cases transient skin allergies have been reported.

**Interactions with other medication:** No interactions have been reported, and none are expected due to the homeopathic dilutions.

**Pregnancy and lactation:** For this product no clinical data on pregnancy and lactation are available. Homeopathic dilutions of the substances present in this medicament are not known to be toxic during pregnancy and lactation. No adverse effects have so far been reported.

**Effects on ability to drive and use machines:** No effects on the ability to drive and use machines have been reported, and none are expected due to the homeopathic dilutions.

**Dosage: Suppositories: Standard Dosage:** Adults (and children 12 yrs. and older): 2 suppositories up to 3x daily. Pediatric: Below 2 yrs.: 1 suppository up to 2x daily. 2–5 yrs.: 1 suppository up to 3x daily. 6–11 yrs.: 1 suppository up to 4x daily. **Acute or Initial Dosage:** Adults (and children 12 yrs. and older): 2 suppositories every 2 hrs up to 6x daily. Pediatric: Below 2 yrs.: 1 suppository every 2 hrs up to 4x daily. 2–5 yrs.: 1 suppository every 2 hrs up to 6x daily. 6–11 yrs.: 1 suppository every 2 hrs up to 8x daily.

**Method of Administration:** Insert suppository into the rectum.

**Overdose:** No cases of overdose have been reported, and none are expected due to the homeopathic dilutions.

**Package sizes (9575):** Packs containing 12 and 60 suppositories of 1,1 g.

SmPC needs to be adapted locally  
RCP se debe adaptar localmente

Esta carpeta contiene información útil sobre la salud basada en datos científicos. Su propósito es meramente informativo. La información o las recomendaciones terapéuticas no constituyen un tratamiento específico de ningún caso concreto. No sustituyen ni son contrarias a las recomendaciones terapéuticas del médico responsable del tratamiento u otro profesional sanitario cualificado. Heel no se hace responsable de ningún daño o perjuicio derivado o presuntamente derivado, directa o indirectamente, de la información proporcionada en el presente folleto.

Tenga en cuenta que los nombres de los medicamentos, las indicaciones o las fórmulas pueden variar según el país, y que los prospectos del envase pueden proporcionar información específica del país. En consecuencia, deberá asegurarse que los ingredientes de cualquier medicamento que use estén en consonancia con la legislación local y cualquier otro requisito legislativo o médico.



## LIBROS DE REFERENCIA

# Visión general

1. Trastornos gastrointestinales
2. Tos y resfriado
3. Trastornos musculoesqueléticos
4. Estrés y sueño
5. Alergias
6. Salud de la mujer

