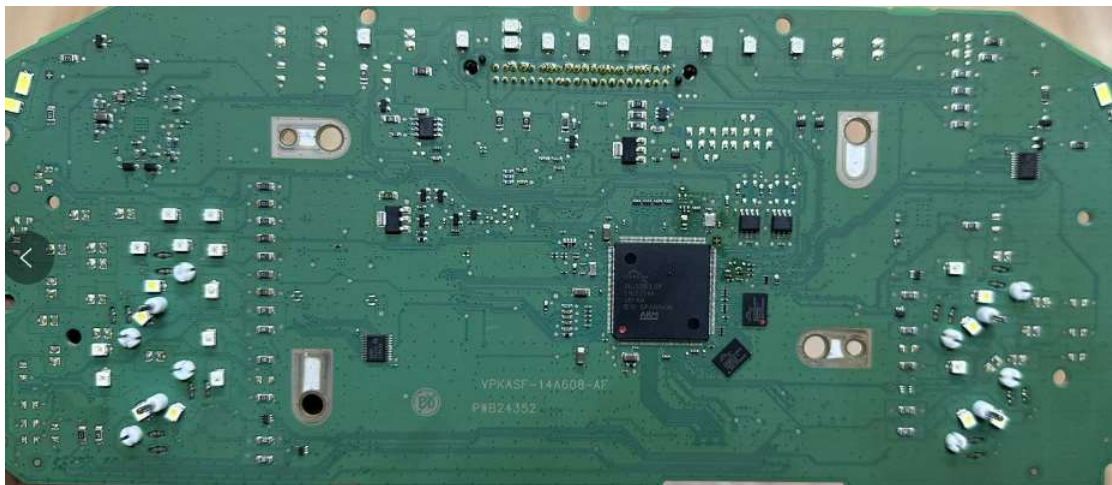
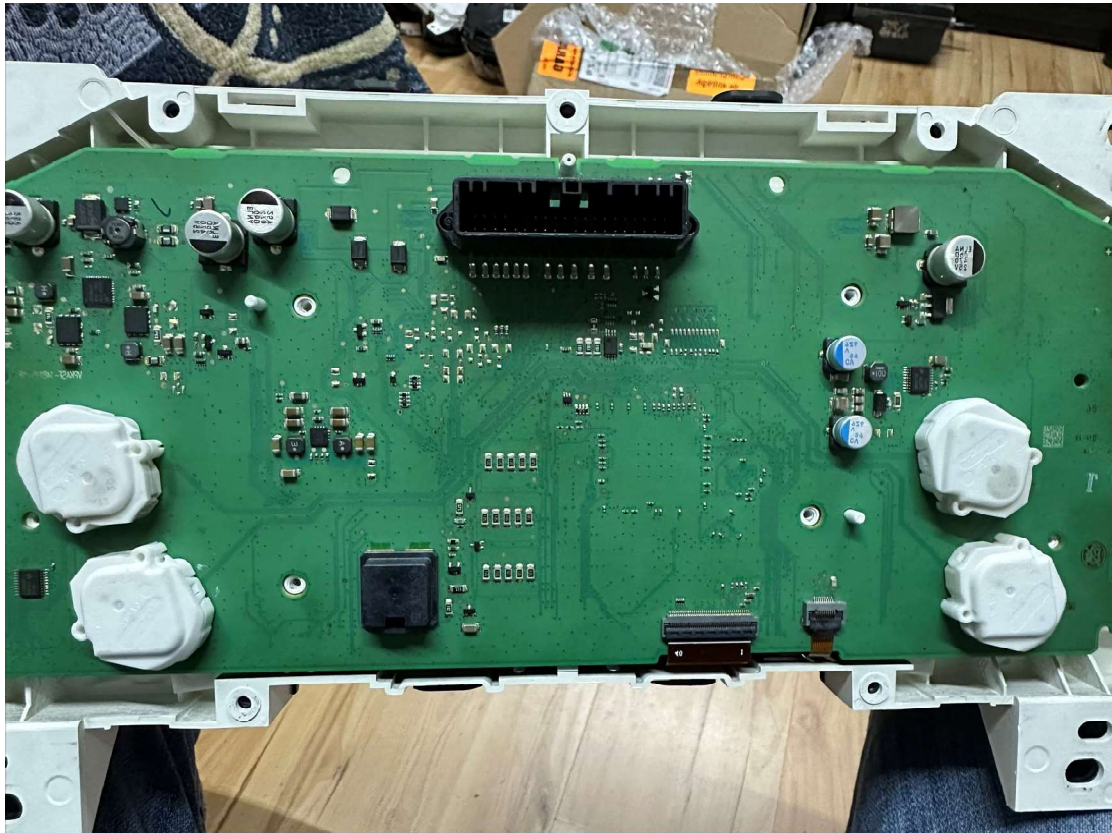


1: Remember the origin mileage of the car, remove the



dashboard.

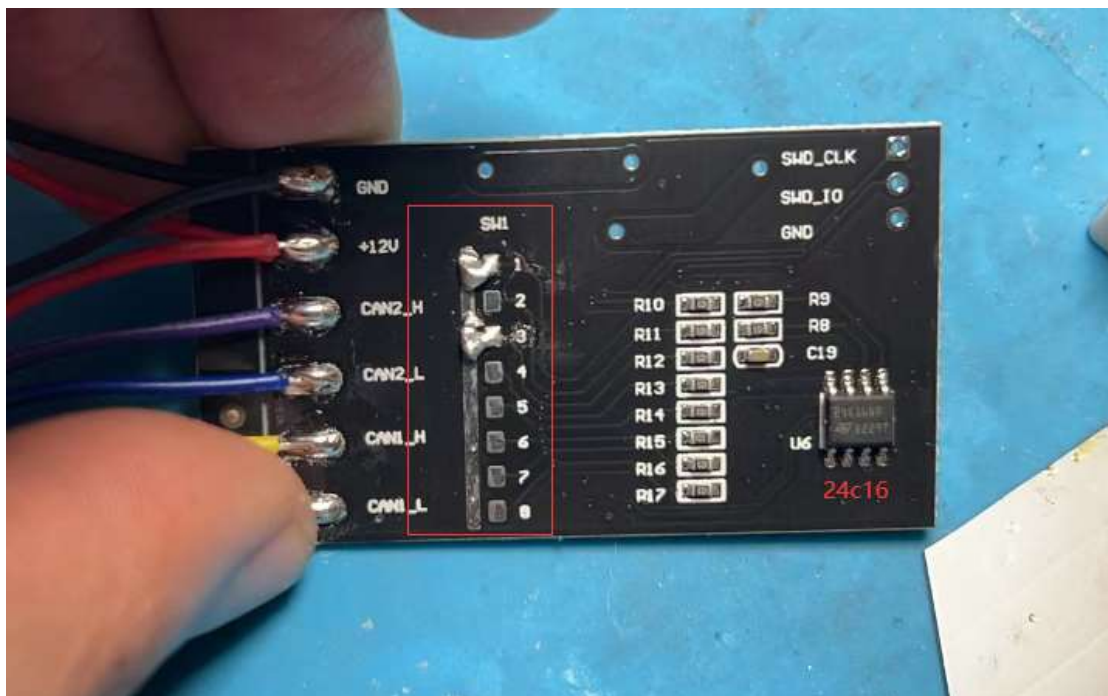


2: Use programmer to read S6J329 data on dashboard, change to your desired mileage.

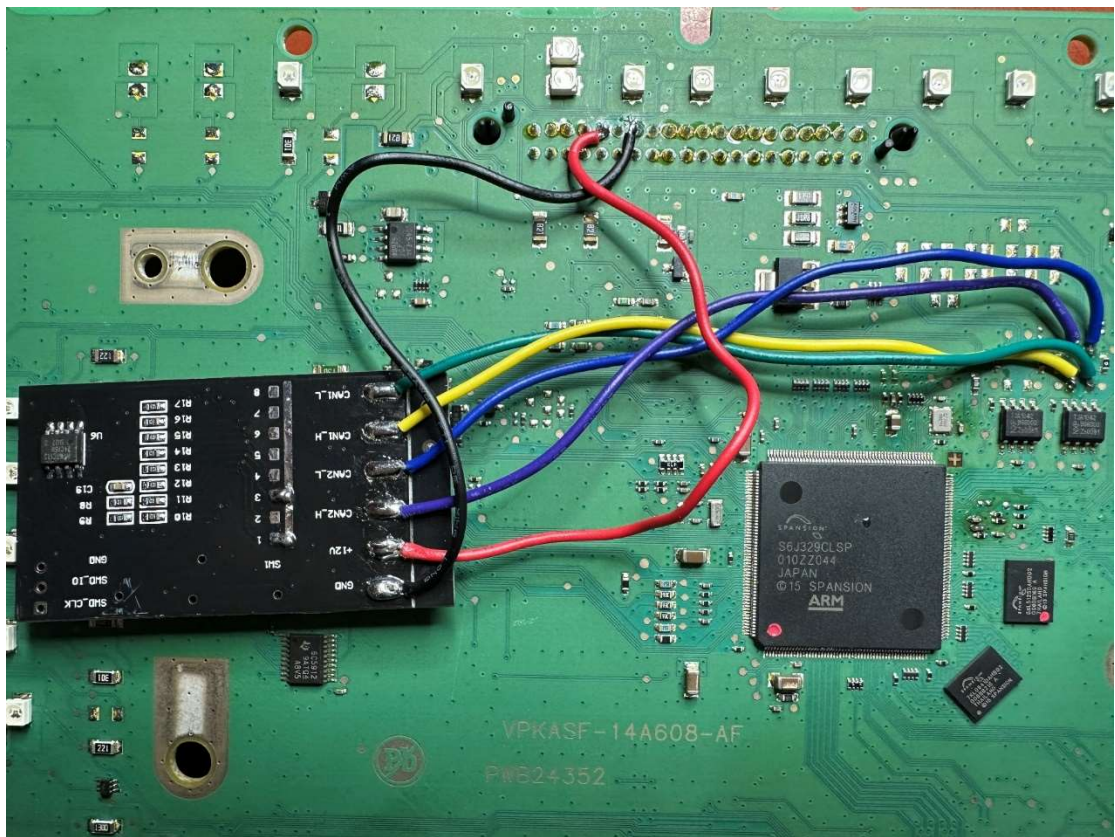
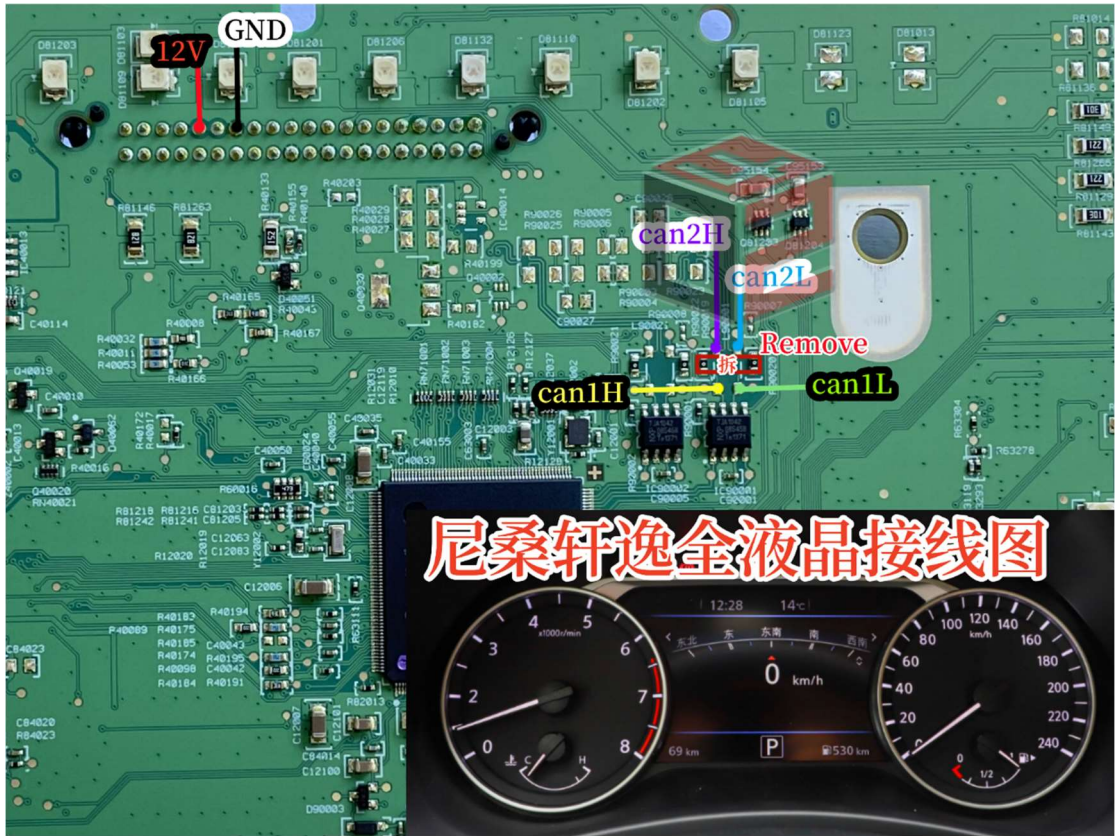
3: Tell us the exact value of origin kilometers shown on dash and the

new kilometer you want it to adjust.

4: We will send you 24C16 Data file, Write the file to 24C16 Chip on the filter, short-circuit the can filter switch accordingly (will be mention on file name).









5: Solder the filter on dashboard according to the wiring diagram provided, install dash on to car after soldering is completed.



6. Driving 2 km on the road, everything is normal.