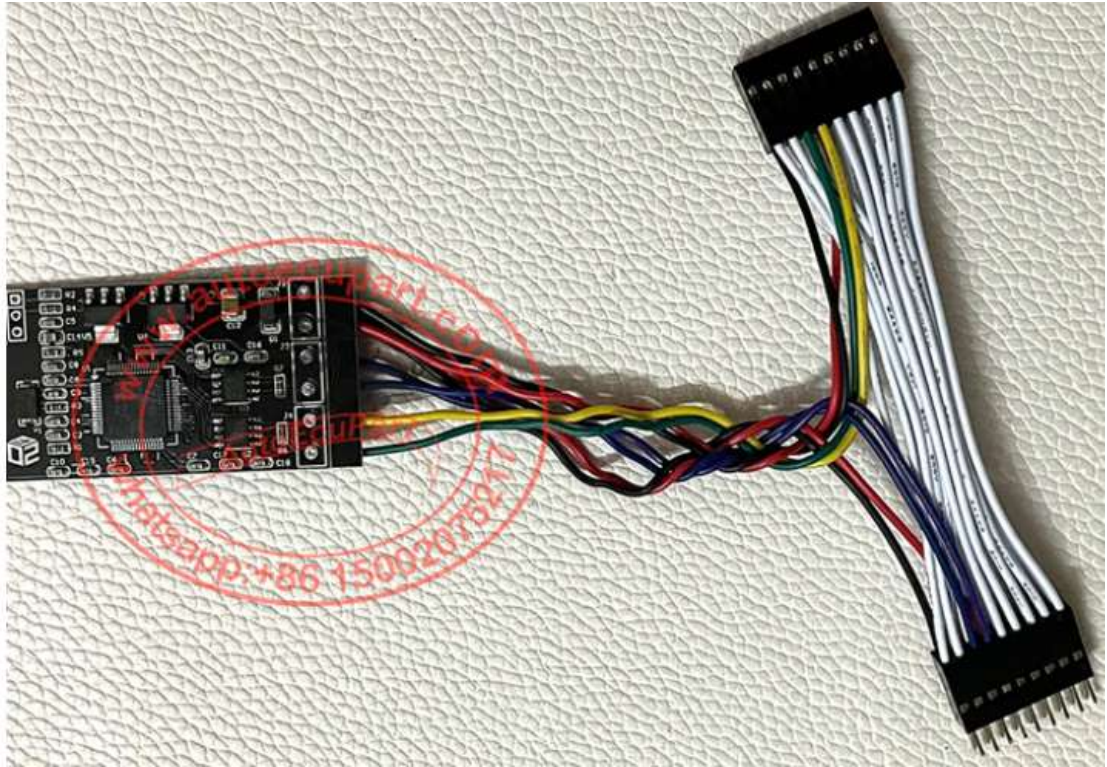
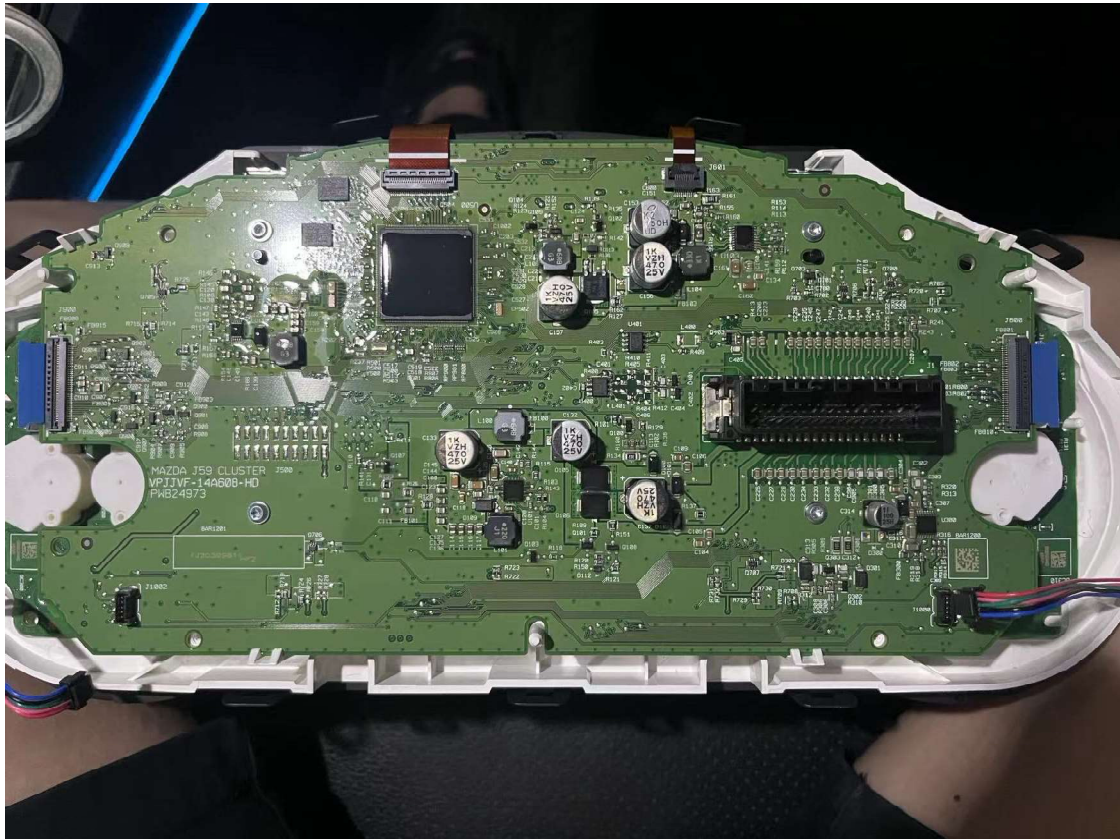


Mazda 3 dashboard can filter



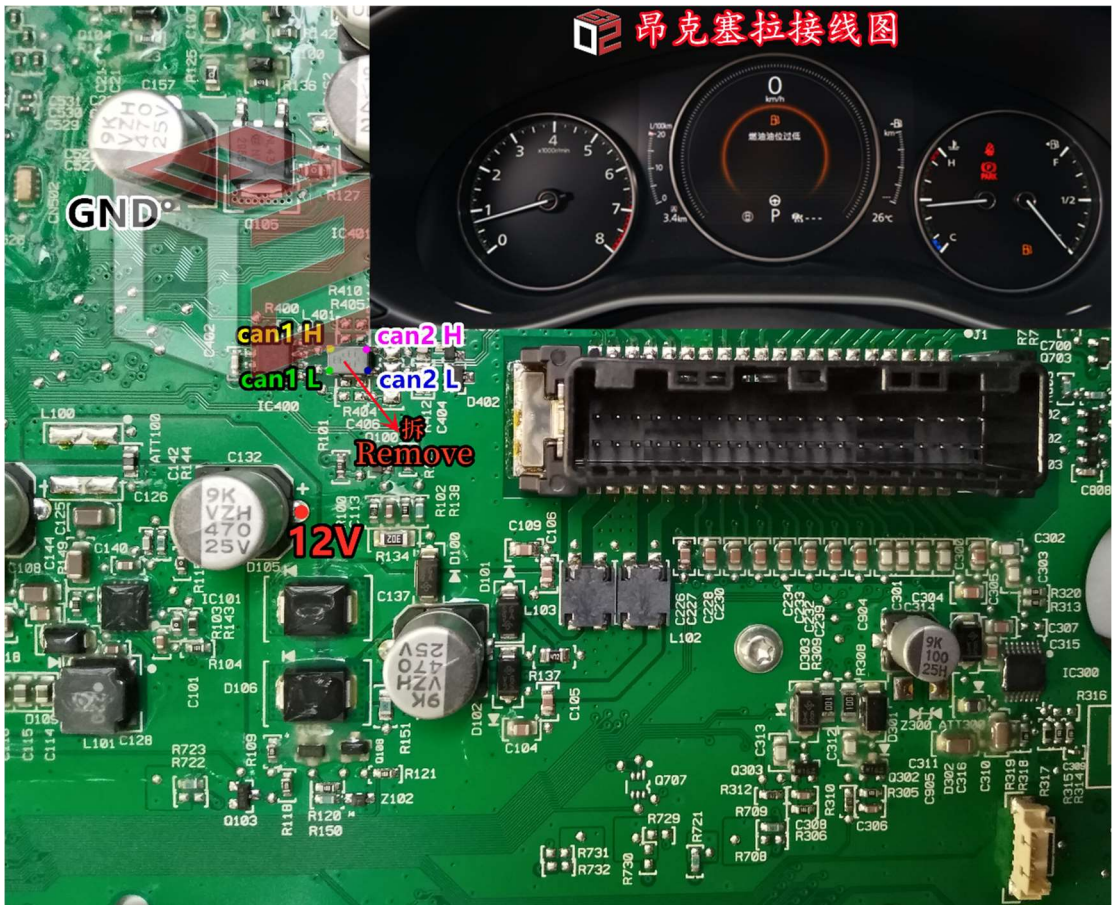
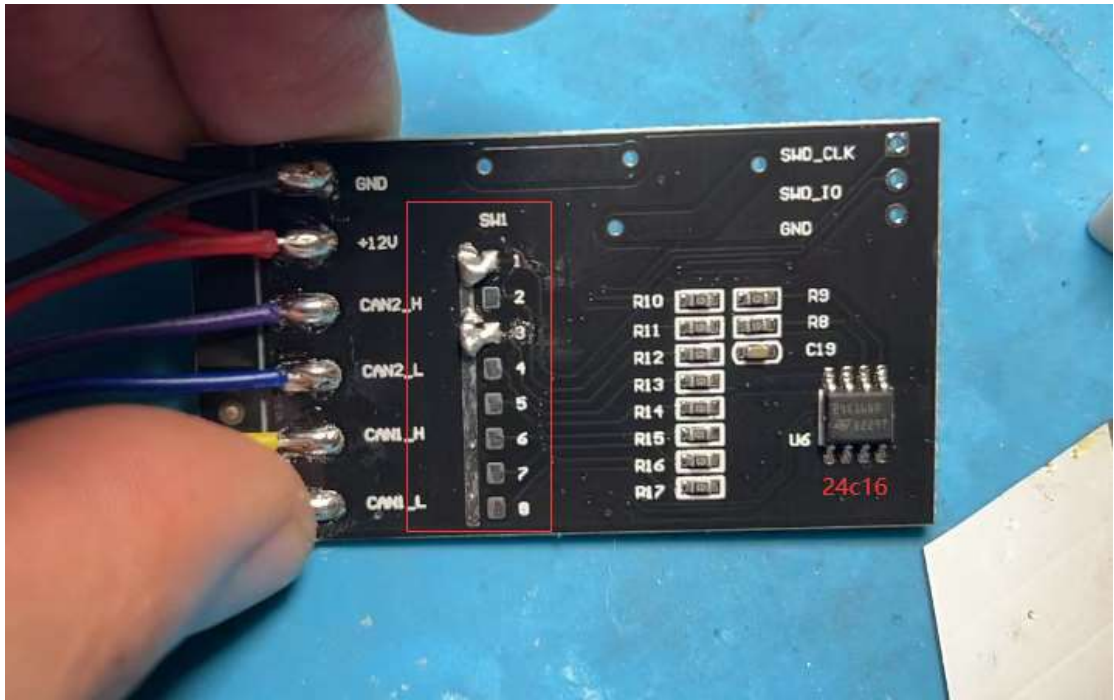


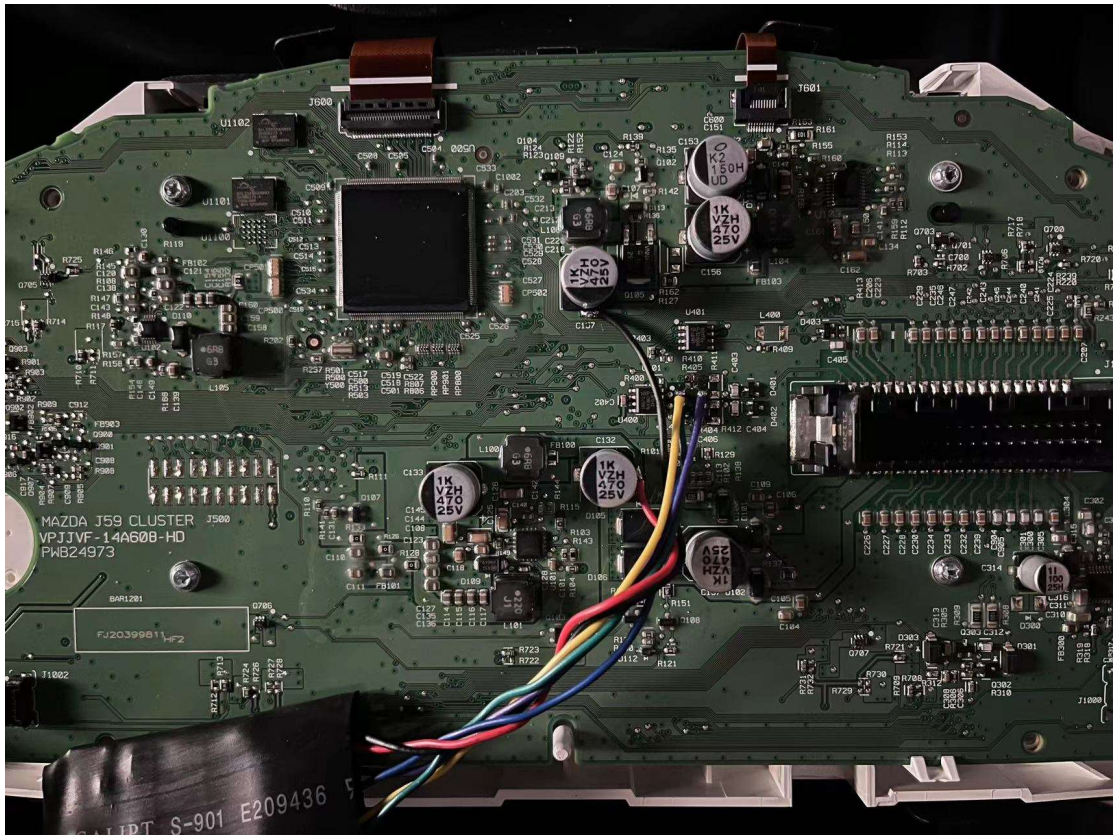
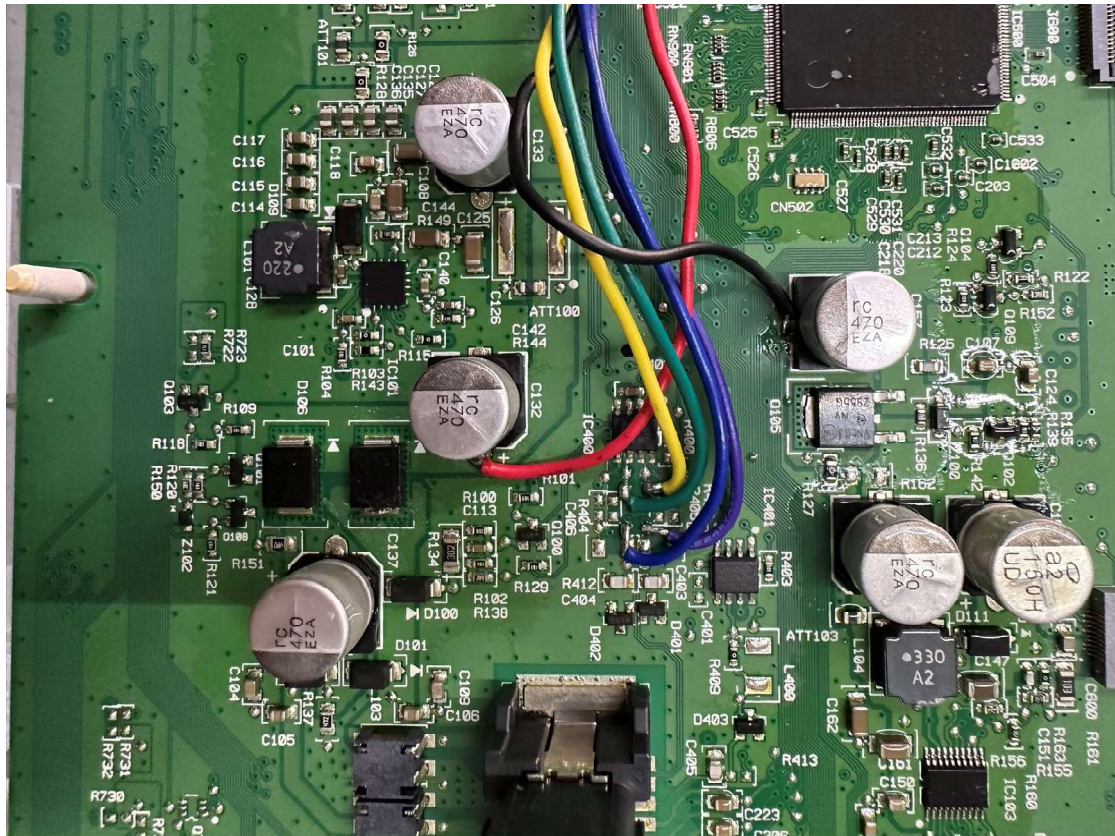
1: Remember the origin mileage of the car, remove the dashboard.



2: Tell us the exact value of kilometers shown on dash and the new kilometer you want it to adjust

3: We will offer you new kilometer data file and write into 24c16 eeprom on filter. short-circuit the can filter switch accordingly (will be mention on file name).





4: Solder the filter on dashboard according to the wiring diagram provided, Install dash on to car.