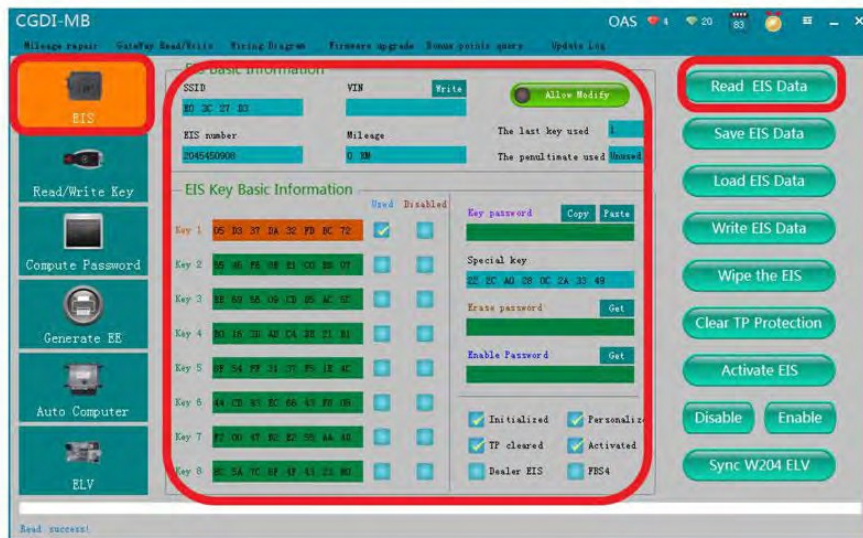


## How to use CGDI ELV Simulator to Renew ESL for Benz 204 207 212?

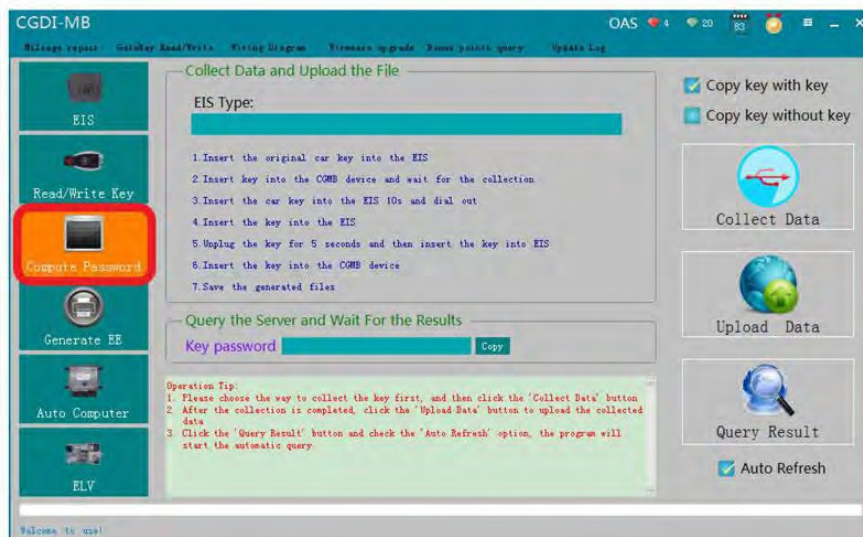
Post is on how to use the [ELV Simulator by CGDI](#) Company to Renew ESL for Benz 204 207 212 by working together with CGDI MB tool.

Connect CGDI MB tool to the vehicle via the OBD port, then read the EIS data.



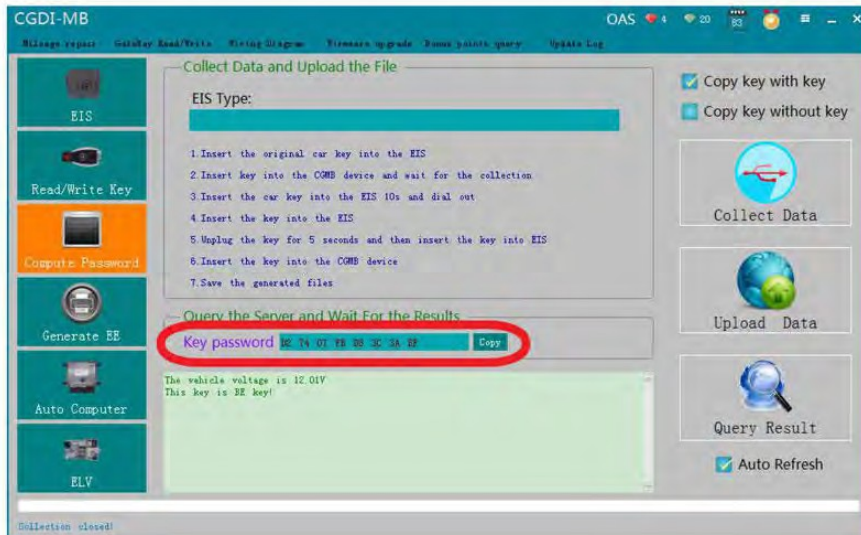
### OBd connects Auto, Read EIS data

Click on "Computer password" to collect the data.



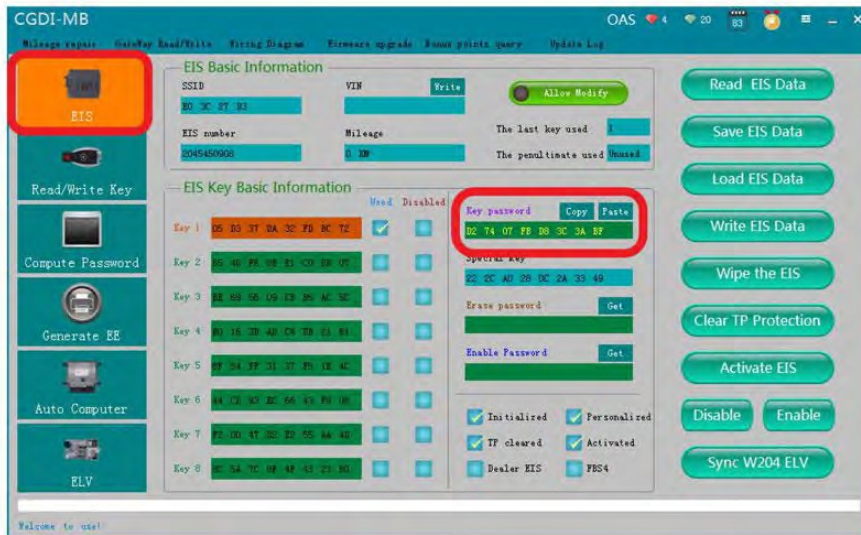
### Turn to "compute password", collect data

The collection process will not be described one by one, upload data, successfully query the password and copy the key password.



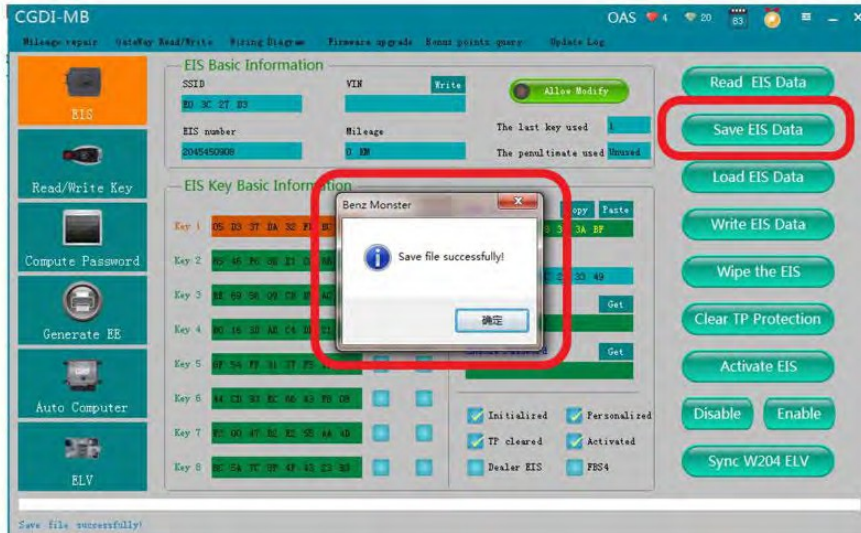
The collection process will not be described one by one, upload data, successfully query the password and copy the key password

Click on "EIS" and paste the key password.



Turn to the EIS interface and paste the key password

Save the data in the default file name.



**Save data, Default file name**

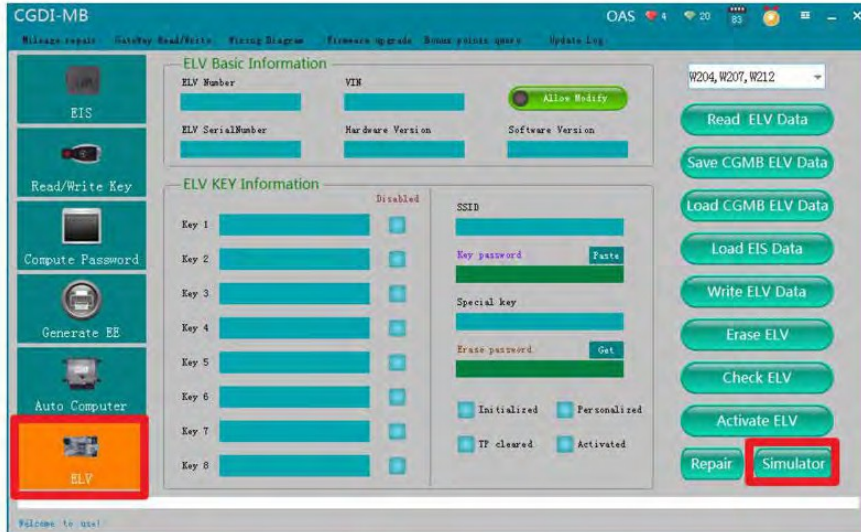
Put on the ELV simulator and clip the K-line.



**Put on the simulator and clip the K-line**

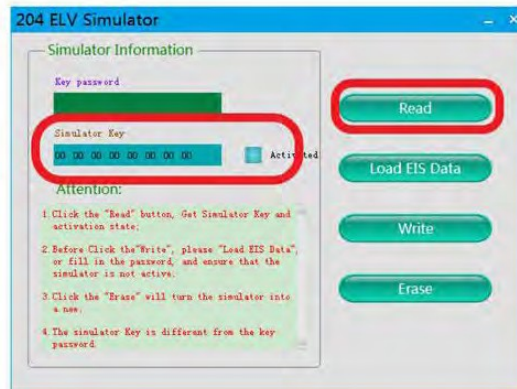
Click "ELV", enter "simulator".





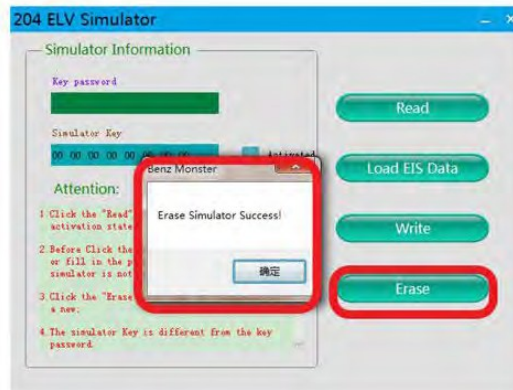
Click“ELV”, enter“ simulator”

Read the Simulator and the related information will be displayed, take 204 ELV simulator data for example.



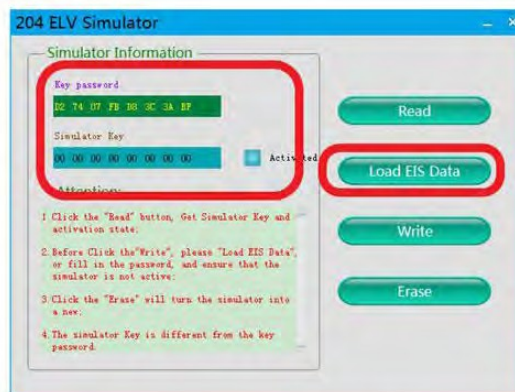
Read Simulator, display related information

Erase Simulator success!



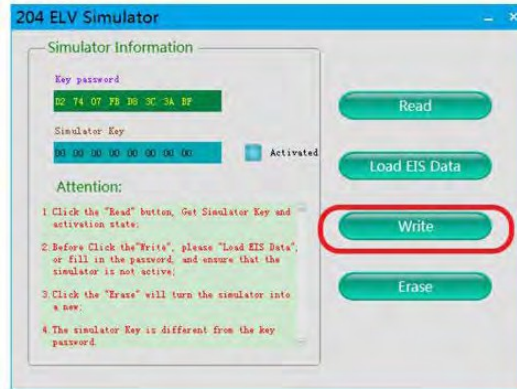
erase simulator

Load the EIS data that was saved just now and check whether the key password is correct.



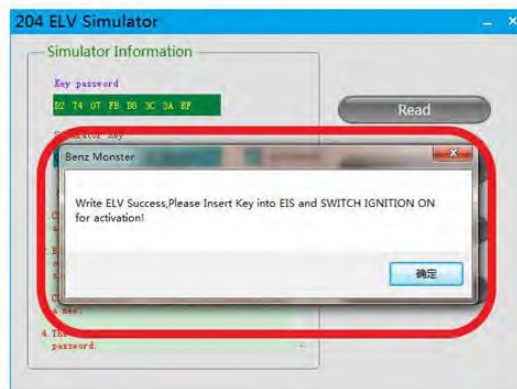
Load the EIS data just saved and check whether the key password is correct

Click 'write' button.



**Click 'write' button**

Write ELV successfully, please insert key into EIS and switch ignition on to activate.

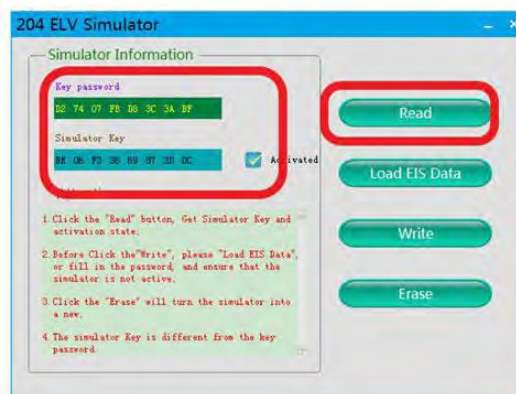


**Write ELV success, please insert key into EIS and switch ignition on for activation**



**Actual operation**

Read simulator again, you can see it is in the "activated" status, match successfully !



**Read simulator again, show activated, match successfully !**