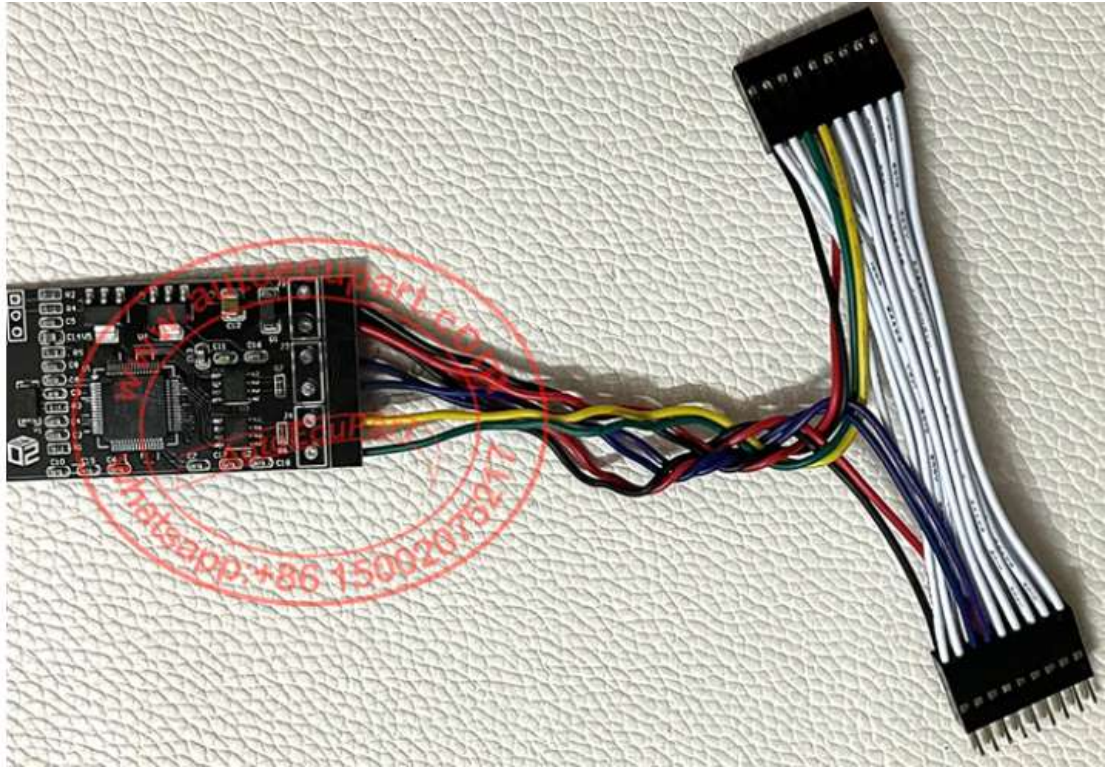


# Chevrolet Onix, cavalier, Tracker dashboard can filter





CG100

美洲车系 > 别克 > GL6 > 新款-过滤器

芯片: 24C16

返回

**注意事项**  
 八脚芯片适配器  
 24XX系列 DIP8/SOP8 引脚图  
 GL6\_仪表  
 GL6\_沃兰多\_新款过滤器接线图

1、此车暂时无法直接处理  
 2、请通过过滤器实际使用方法进行操作

开始

新公里数比原公里数小, 短接1  
 If new mileage is smaller than original one, please short connection 1.

新公里数比原公里数大, 短接2  
 If new mileage is larger than original one, please short connection 2.

拆下此芯片, 写入数据后焊回  
 Remove this chip first and solder back after writing data.

+12V 点击图片进入全屏, 再次点击退出。

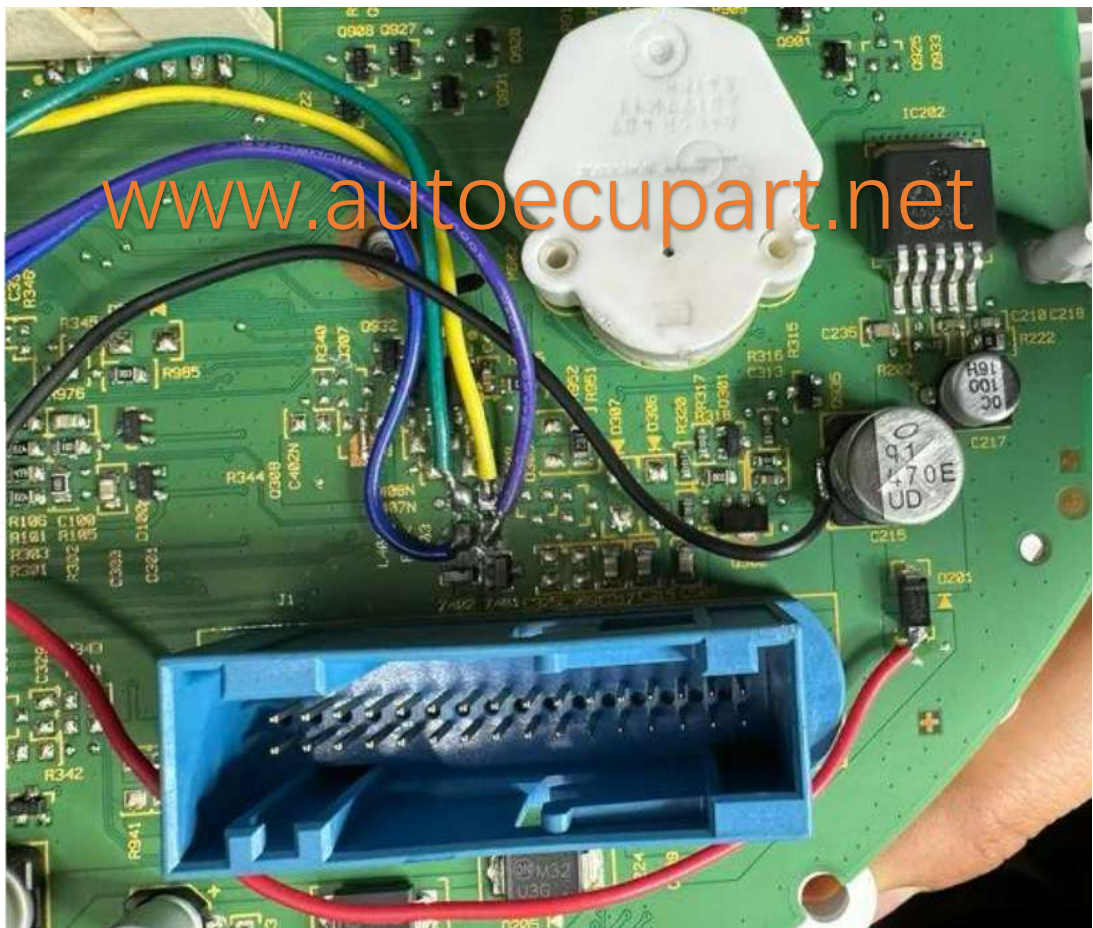
拆除此元件  
 Remove this electron components.

CAN1-L  
 CAN2-L  
 GND  
 CAN2-H  
 CAN1-H





[www.autoecupart.net](http://www.autoecupart.net)



[www.autoecupart.net](http://www.autoecupart.net)



- 1. Remove 24C16 Chip from CAN Filter, Use CG100 or CG100X Programmer to write new Mileage into 24C16 Chip; then solder back 24C16 Chip onto CAN filter.**
- 2. short-circuit the can filter switch accordingly (will be mentioned on photo).**
- 3. Solder the Can filter on dashboard according the wiring diagram, ready for working. (No need**

**modify dashboard 24C16 Chip; just write new  
mileage data into CAN Filter 24C16 )**