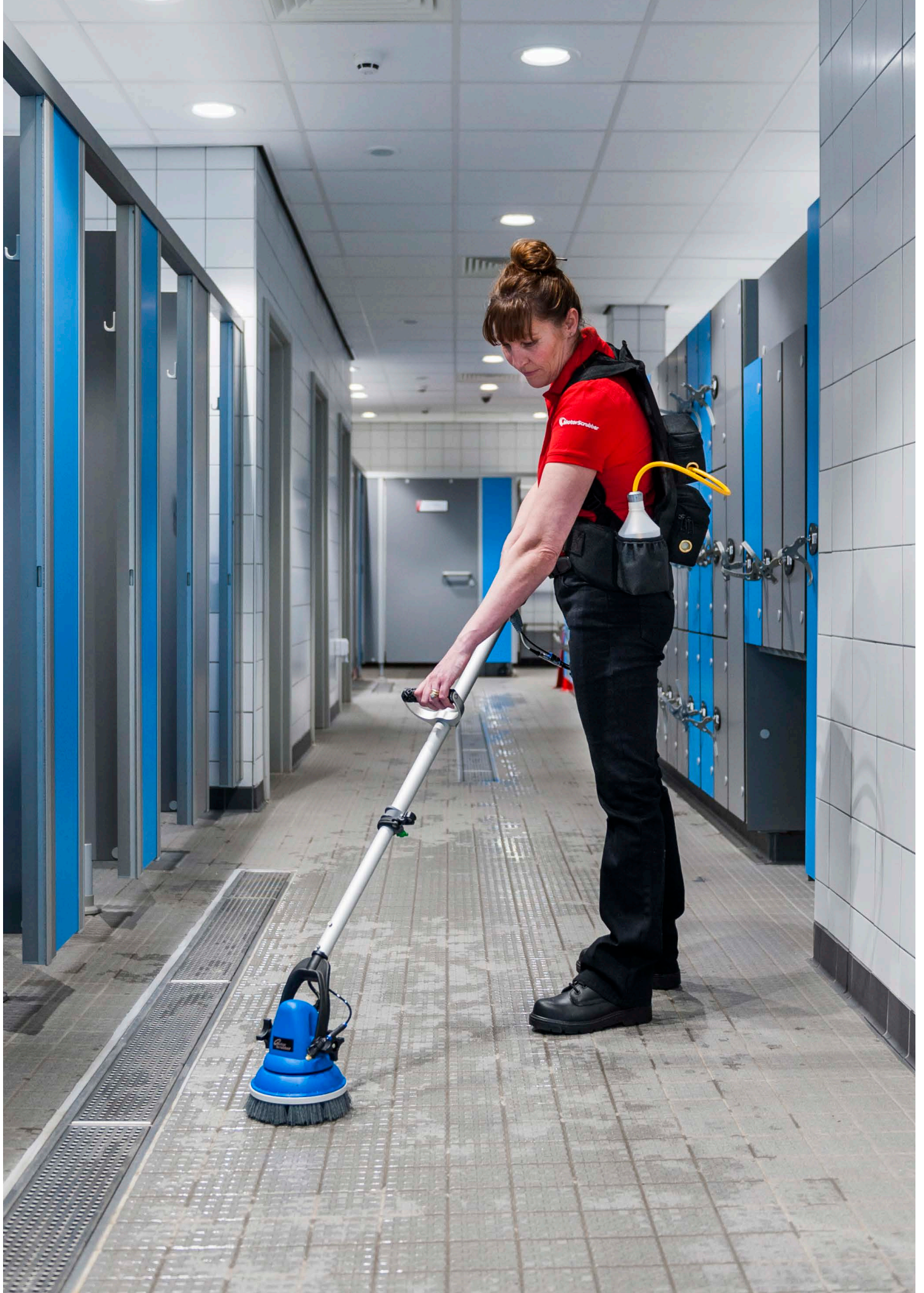




MotorScrubber ^{JET}

SMALL MACHINE BIG POWER

MotorScrubber Jet Instruction Manual



Thank You For Purchasing MotorScrubber Jet

We hope you enjoy using your MotorScrubber Jet, please feel free to leave comments and feedback at motorscrubberclean.com/support.

PLEASE READ ALL INSTRUCTIONS

When using electric products, basic safety precautions should always be followed to reduce the risk of electric shock and personal injury, including the following:

Consider your work area environment. When using the MotorScrubber be aware of overhead electrical wires. **MOTOR SCRUBBER IS POWERED BY DC CURRENT ONLY. DO NOT ATTEMPT TO OPERATE MOTORSKRUBBER WITH AC CURRENT.**

- Always flush out chemical with clean water after every use.
- Never pull the MotorScrubber by its cord or yank it to disconnect it from the battery.
- Keep the cord away from heat, oil and sharp edges.
- Keep your MotorScrubber clean. For safer operation follow instructions for attaching accessories. Keep the upper handle switch area dry, clean and free from oil, grease and water.
- Disconnect the MotorScrubber when not in use **AND WHEN ATTACHING ACCESSORIES.**
- Inspect for damage before using MotorScrubber.
- When servicing, use only genuine parts and accessories.
- MOTORSKRUBBER IS A POWER TOOL. **AS WITH ANY POWER TOOL, ALWAYS USE BOTH HANDS TO ENSURE SAFE OPERATION.**
- Ensure you adopt the correct posture when using MotorScrubber. Adjust the position of the control handle (page 11) so your arm is straight when holding the handle. Your back should be straight at all times. See image left for reference.

Save these instructions for future reference.

THE HARNESS



- | | | |
|-----------------|-------------------------|--------------------------|
| 1. CARRY HANDLE | 5. BATTERY PACK | 9. WATER PIPE CONNECTION |
| 2. JET PUMP | 6. CARTRIDGE HOLSTER | 10. FILTER |
| 3. 1L BOTTLE | 7. CABLE TIDY | 11. CHARGER |
| 4. BOTTLE POUCH | 8. ELECTRICAL CONNECTOR | |

The harness should be put over your shoulders like a backpack. There are two adjustable straps which can be pulled to tighten the shoulder supports to a comfortable user level. Ensure the Velcro belt strap is fastened across your abdomen.

The filter (10) is clear so you can see any contaminants. The filter should last the lifetime of the machine if the water bottle is kept clean. If you see any blockages or contaminant build up the filter can be replaced.

THE JET



1. PUMP SWITCH
2. BRUSH SWITCH
3. WATER PIPE & CONNECTOR
4. ELECTRICAL CABLE & CONNECTOR
5. CONTROL HANDLE
6. FLIP CLIP
7. HANDLE SCREWS
8. CHECK VALVE
9. LOCKING KNOB
10. HUB
11. JET ARM
12. JET
13. ROTATING DISC

IMPORTANT INFORMATION



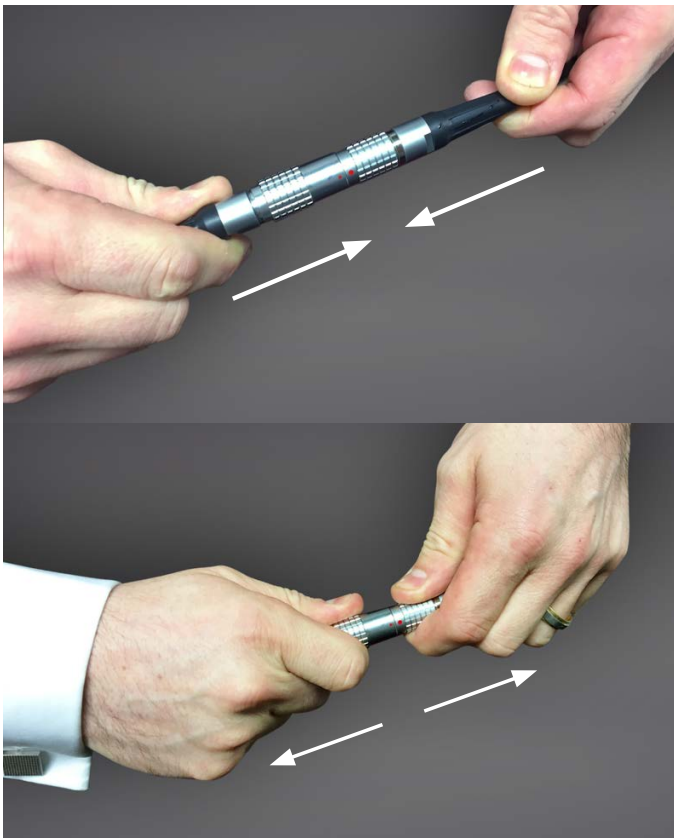
the red positive battery terminal. Connect the blue wire, with the - sticker, from the battery coiled cord to the black negative battery terminal.

Before use, the battery coiled cord needs connecting to the battery terminals. It is vitally important to connect the cable with the correct polarity. If the cable is connected incorrectly it could cause damage / fire when plugged into the charger.

Unzip the battery compartment located on the back pack. See point 5 of the harness diagram on page 4.

Connect the brown wire, with the + sticker, from the battery coiled cord to

ELECTRIC CONNECTION

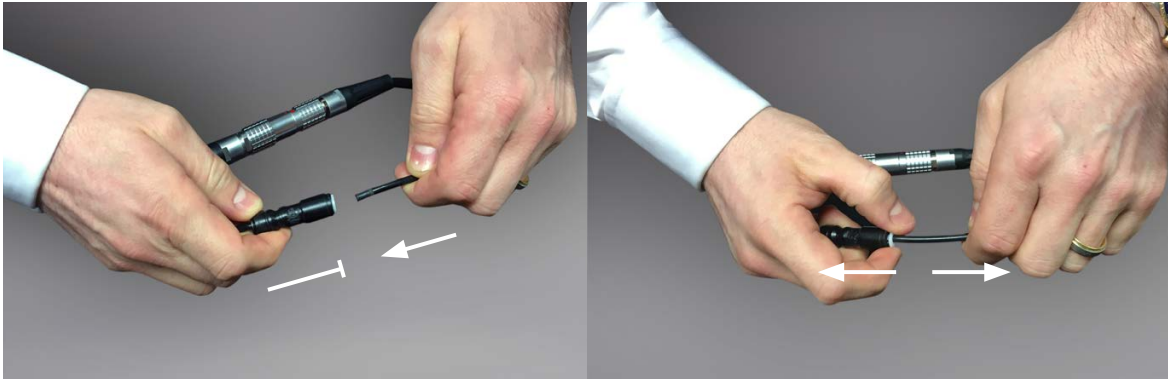


IMPORTANT: BEFORE YOU CONNECT THE POWER CABLE CHECK THE BRUSH SWITCH IS NOT ON, SEE PAGE 7 FOR DETAILS.

To connect the quick fit stainless steel electrical connection, line up the two red dots and push until you hear a click.

To release the connection grip the textured areas and pull apart.

WATER CONNECTION



Firstly make sure the connector is facing the right way. The white collar of the connector should point towards the harness.

Push the water pipe into the connector until

the pipe stops, roughly 7mm.

To separate the connection, with two fingers, push the white collar towards the black housing and pull the pipe out.

THE HANDLE



PUMP SWITCH

The top blue switch operates the pump, this is a demand switch and needs to be held down to operate the pump. When the button is released the pump will switch off.



BRUSH SWITCH

The bottom black switch operates the brush. This is a latching switch, depress the switch until you hear a click and let go, the motor will run continuously. Press again and this will stop the brush. It is important that this button is not depressed before you connect the electrics.

PRIME THE PUMP



2 MINUTES

Every MotorScrubber Jet is thoroughly tested in our factory before dispatch. It is possible during storage and transport an airlock will have developed in the pumping system. To release any airlocks present you must complete the priming steps below before the Jet can be used. The initial prime takes roughly 2 minutes to complete.



HOW TO PRIME THE PUMP

1. Put the back pack on.
2. Fill the bottle with clean water and securely fasten the cap.
3. Connect the water and electrical cables, see page 7 for instructions.
4. Hold down the blue switch and continue to do so until water is continuously spraying from the jet. The pump will go through the following stages:
 - Air - trapped air starts to work through the system. High pitch pump noise with drips from the jet.
 - Water - the pump will start to take water into the system. Pump noise deepens with weak spray from the jet.
 - Primed - The pump will make a deep continuous hum, you will see high pressure water at the jet.
5. When you request water it should be an instant start / stop of water flow with a constant high pressure flow.

The first prime can take up to 2 minutes to complete. Further primes will take approximately 30 seconds, a prime will need to be carried out before each use.

Visit www.motorscrubberclean.com/support for an instructional video if you are unsure you have primed the pump correctly.

This process should also be used to rinse out chemical after every use.

PREPARING THE CHEMICAL



1. Fill the bottle with clean water, no more than 35°C (95°F), to the neck of the bottle.
2. Slide the chemical cartridge into the top of the filled bottle until the cartridge stops.
3. Insert the tube with through the cartridge.
4. Screw the cap straight down into place, being careful not to cross thread it. You will hear a small pop,

the cartridge is now pierced and the chemical released.

5. Gently shake the bottle to fully disperse the chemical into the water.
6. Slip the bottle into the bottle pouch on the harness. The solution is now ready to use.

Unused solution can be stored in the bottle with a solid screw cap for up to 4 weeks. Additional bottles with solid caps can be purchased for storing different chemicals.

CLEANING WITH MOTORSCRUBBER

- When using MotorScrubber make sure the brush or pad is flat to the floor, this will ensure smooth operation of the machine and an optimal clean.
- The Jet is a low water use cleaning machine, only a small amount of detergent is required to wet and clean the floor, allow the brush and powerful scrubbing action to release the dirt. The 1L solution capacity can efficiently clean up to 40m².
- Do not to use water hotter than 35°C (95°F), this can damage the valves and pump.
- When the solution bottle is nearly empty look for the jet to stop spraying. Do not operate the pump as this will create an airlock. Simply re-fill with chemical and prime the pump.
- After every use you need to flush the pumping system. To do this fill the bottle with clean water and hold down the blue switch for 60 seconds. Foam will spray from the jet and you will see this change to clean water. This is a vital step as the delicate valves and small pipes can become damaged or clogged with chemical if left to sit for a long time. To maintain your warranty this step must be carried out.
- As a manufacturer to guarantee Jet from defects we have thoroughly tested our quality range of chemicals and approved them for use with our machine.
- It is impossible for us to control every type of chemical that could be used through the machine. If you decide to use your own none approved chemical which causes damage to any of the components this will void your warranty. It is possible to use other detergents through the MotorScrubber Jet, however, they must be approved through your Countries MotorScrubber partner.
- Scrub with straight, light strokes. You do not have to exert pressure through the head, MotorScrubber will do the work for you.
- **DO NOT USE MOTORSCRUBBER WITH FLAMMABLE CLEANING FLUIDS.**
- **AUTOMATIC SHUT-OFF:** MotorScrubber is equipped with a self-resetting circuit breaker to prevent damage to the motor. If the unit is stalled, the circuit breaker will interrupt the electrical power from your 12-volt battery. Remove MotorScrubber from the work surface. The circuit breaker will re-set in 6 to 10 seconds. Resume using MotorScrubber.

REMOVING DIRTY SLURRY

There are many ways to remove dirty slurry after cleaning, the most effective ways are:



1. Coming soon: MotorScrubber can be equipped with a suction head which can be connected to a wet vac for slurry pickup. Estimated end of 2017.
2. Squeegee: Many hard floor areas have a drain in the floor. Dry and remove the slurry with a floor squeegee into the drain.
3. Microfibre: Use our MS1053 microfibre pad to absorb the slurry, carry multiples for heavy use. Our microfibre pads can be machine washed up to 400 times.
4. Flat mop: Use a flat mop with microfibre to absorb the slurry.

ADJUSTING THE FLIP CLIP

The flip clip allows for super fast adjustment of the telescopic pole



1. Release the black clip by pushing up the release catch. **2.** Adjust the pole to your desired length then push the black clip back into position. Do not extend further than the red stop line printed on the handle.



TIGHTENING

If the telescopic pole is slipping while in use you will need to ensure the clip is tightened appropriately.

To do this locate the green adjustment screw and ensure the black clip is in an open position as indicated in the photo, left.

Being careful not to over tighten, turn the screw clockwise until you can comfortably push the black clip back into its lock position. If the black clip is difficult to push back, turn the green screw anti-clockwise until it is easy to push back into position.

For an instructional video please visit motorscrubberclean.com/support

CHANGING THE CONTROL HANDLE POSITION



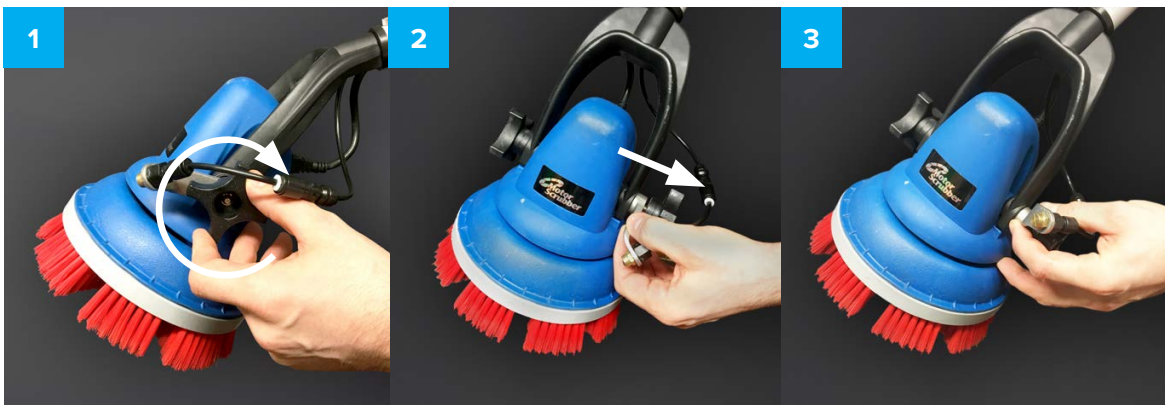
Turn the MotorScrubber over so the back of the handle is facing you.

Using a 4.5mm Allen key remove the two screws and take off the handle base.

Move the handle to your desired position, replace the handle base and screws.

Ensure the rubber grip is kept between the handle and the pole.

ADJUSTING THE JET POSITION



1. Unscrew the locking knob, anti-clockwise (Approx 4 full turns).

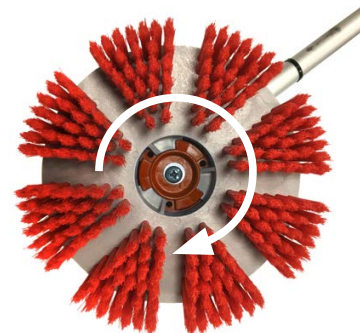
2. Pull the Jet arm outwards and rotate to new position, push in place.

3. Screw the locking knob back into position, clockwise.

CHANGING A BRUSH

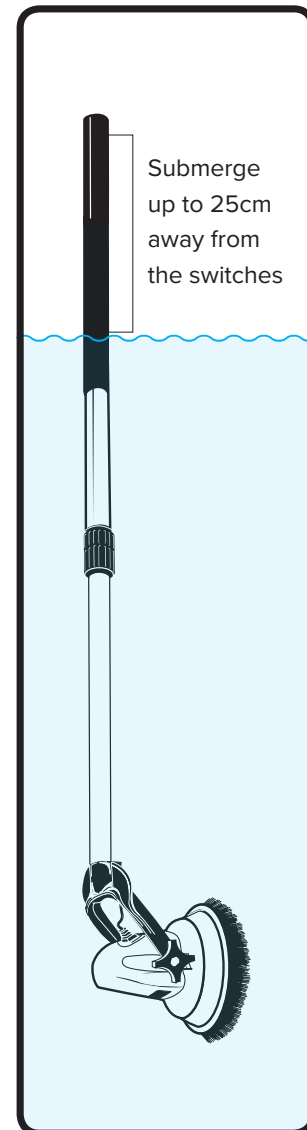
Line-up the tabs on the brush with the tabs of the rotating disc (see point 13 on page 5). Hold the rotating disc to prevent movement. Press down on the brush and twist clockwise until it locks in place.

To remove, press down on the brush and twist counter-clockwise holding the rotating disc until tabs are free.



UNDERWATER USE

- Because its motor head can be fully-immersed in water, the MotorScrubber is ideal for many underwater cleaning tasks. One of the more popular uses of the MotorScrubber is cleaning the “scum line” above the water level in swimming pools, spas, boats, etc.
- Immersing the head for long periods of time could effect its water-proofing seals due to the effects of prolonged heating and cooling. The seals could contract and allow water to make direct contact with the motor, which would cause a motor failure. Guidelines need to be followed to avoid this.
- The seals should be inspected once a month to check for signs of corrosion that would compromise its water tightness. If the unit is used underwater on a regular basis an internal inspection of the head is also required each month by a competent technician, this is to check for water ingress.
- **WE RECOMMEND NOT USING THE MOTORSCRUBBER FULLY SUBMERGED IN WATER FOR MORE THAN 2 MINUTES CONTINUOUSLY. MOTORSCRUBBER SHOULD THEN BE REMOVED AND ALLOWED TO COOL FOR 5 MINUTES.**
- Waterline cleaning where MotorScrubber is half in and half out of the water has no limitations.
- Regular underwater usage will reduce the lifetime of the head unit. MS4000 complete motor head can be purchased and replaced when required. 1 year is the suggested life of regular underwater use.



BATTERY & CHARGING INFORMATION

- The battery should be charged before using your MotorScrubber, after each use, and if unused for 4 months.
- When charging the machine the red light will show, when the battery is fully charged the light will show green. A full charge from flat will take approximately 8 hours.
- Connect the coil cord into the charger (See page 4, Point 8 to 11) and then plug the charger directly into a 120 VAC/60HZ or 240 VAC electrical outlet or use an adapter or a charger made for the AC source being used. (Do not use an extension cord). After charging, disconnect the charger from the AC outlet and (IMPORTANT) disconnect the charger from the battery.
- MotorScrubber uses a rechargeable sealed lead-acid battery. Non-spillable.
- Capacity: 12-volt, 7.0 amp-hour
- Depending upon the average depth of discharge, over a thousand discharge/charge cycles can be expected.

IMPORTANT SAFETY INSTRUCTIONS

- To protect against risk of electrical shock do not put battery charger in water or any other liquid.
- Do not operate in the presence of explosives and/or flammable fumes or liquids.
- Do not store or carry battery so that metal objects can contact battery terminals - the battery could short circuit causing fire, personal injury or damage to the battery.
- Never attempt to open battery for any reason. If the housing of the battery breaks or cracks, immediately discontinue use and do not recharge. The battery should be replaced.
- Do not charge a battery if it is wet or shows any evidence of corrosion.
- Do not incinerate the battery; it can explode in a fire.
- Plug the battery charger directly into a 120VAC/60HZ or 240VAC, with the correct plug adaptor, electrical outlet (Do not use an extension cord).
- Charge the battery only with the MotorScrubber battery charger.
- Do not use the charger in wet or damp conditions. It is intended for indoor use only.
- Do not use the charger near sinks or tubs. Do not immerse in water.
- Do not allow the cord to hang over the edge of a table or counter, or touch hot surfaces.
- Do not use charger for any other uses other than MotorScrubber batteries; other batteries may explode.
- Do not operate charger with damaged cord or plug. Replace the charger immediately.
- Do not operate charger if it has received a sharp blow, been dropped or otherwise damaged in any way. Return the appliance to your local distributor for examination, repair or electrical or mechanical adjustment. Do not disassemble charger.
- For best results do not charge a battery when it or air temperature is below 40°F (5°C) or above 105°F (40°C).
- Unplug the charger when not in use and before cleaning or maintenance.
- Do not abuse the cord. To reduce the risk of damage to the electric plug or cord, never carry the charger by its cord or yank the cord to disconnect. Instead, grasp the charger plug and pull to disconnect. Keep charger cord away from heat, oil and sharp edges.
- Flush eyes and skin with water if contact is made with acid.
- **NEVER ATTEMPT TO OPERATE THE MOTORSCRUBBER FROM AN ELECTRICAL OUTLET. OPERATE THE MOTORSCRUBBER ONLY FROM THE 12-VOLT BATTERY.**

TROUBLESHOOTING

IS YOUR MACHINE NOT TURNING ON?

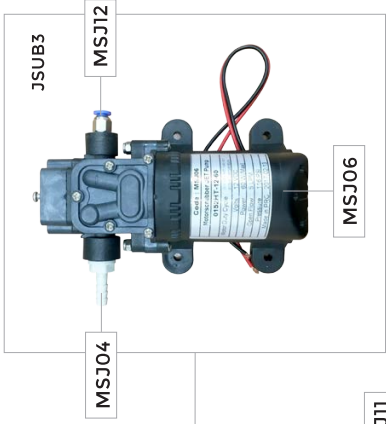
- If your MotorScrubber is not turning on or is turning slowly check the battery terminals are connected properly and motor to handle plugs are connected securely.
- Next, using a voltmeter, simply open the battery pack, disconnect the two leads at the battery, and touch the voltmeter probes to the terminals accordingly. A satisfactory reading would be approximately 11.5 to 13 volts.

IS YOUR MACHINE NOT SPRAYING?

If the machine is not spraying after priming the pump (see page 8) complete the following steps:

1. Can you hear the pump running when the blue pump switch is pressed, with the machine connected to the electrics? If yes continue with the following steps. If you cannot hear the pump please contact the seller.
2. Is the water bottle filled? If no, fill the water bottle and prime the pump (see page 8). If the water bottle is filled continue below.
3. Does the water filter look clear? If blocked, replace the filter. If yes, continue below.
4. Check that the check valves (Page 4 Position 9 and Page 5 Position 8) are in the right direction. On each check valve there is a small arrow, this should be pointing in the direction of the water flow towards the head of the machine. If they are not, remove and re-fit. If they are continue below.
5. Check the pump inlet and outlet connections are as tight as possible, air could be sucked in. If they are firmly in place with no obvious point of entry for air to get through please contact the seller.

For additional help on using the MotorScrubber please visit the support section of our website www.motorscrubberclean.com



12V7A BATTERY

**HARNES COMPLETE
PARTS BREAKDOWN**
COMPLETE BACK PACK: JSUB1

JET COMPLETE PARTS BREAKDOWN



Certificate of Conformity

24/01/2017

The following products have been tested by us with the listed standards and are found in compliance with the council EMC Directive 2014/30/EU. It is demonstrative for the compliance with this EMC Directive.

Applicant: T L Killis & Sons Limited

Address: 6 Orgreave road, Sheffield S13 9LQ Great Britain

Product: Motorscrubber Battery operated Cleaning Machine

Model No: MS2000S, MS2000M, MS2000L, MSJET, MSPROWASH, MSFORCE

Rated Input: AC 100 – 240Volt~ , 50/60Hz, 0.6Amp

Rated Output: DC 12 Volt, 7Ah

Test Standards: IEC 60335-2-10:2002 (Fifth edition) and EN 60335-2-10:2003 in conjunction with IEC 60335-1:2001 (Fourth edition) + Corr.1 and EN60335-1:2002+ A11:2004

Yours Sincerely,



IMRE KILLI
MANAGING DIRECTOR
Date: 24/01/2017

The statement is based on a single evaluation of one sample of above mentioned products, it does not imply an assessment of the whole production.



0044 (0)114 269 86 86

6 Orgreave Road, Handsworth,
Sheffield, S13 9LQ UK

info@motorscrubberclean.com



- ↖ Fitness suite
- ↖ Activity studios
- ↖ Sports hall viewing area
- ↖ Sports hall / squash changing rooms
- ↖ Sports hall
- ↖ Squash courts
- ↖ Training rooms



**ENJOY
YOUR
CLEANING**



Register your warranty at:
motorscrubberclean.com/warranty

YOUR WARRANTY

LIMITED ONE-YEAR WARRANTY MOTORSCRUBBER JET 12-VOLT DC TOOL

We at Motorscrubber UK work hard to build the highest quality cleaning tool, we strive for perfection! As the market leader in compact scrubbing machines we select the highest grade components and continuously develop our machines based on the valuable feedback from our customers. Our aim is to build the worlds most powerful compact cleaning tool which you can use all day every day without failure. We want you to be 100% satisfied with your Motorscrubber, in the rare event a fault should occur we are here to help and ensure your machine is back up and running as soon as possible. So that we can cover your warranty fully please follow the below terms.

Every MotorScrubber is thoroughly inspected and tested before leaving the factory. It is warranted to be free from defects in workmanship and materials for the period of one year from the date of original purchase. Should any problem covered by this warranty develop during the one-year period, follow the instructions in this booklet and return the unit carefully packaged with freight prepaid to your original supplier.

Your supplier will inspect the item and liaise with us directly. If inspection shows the problem was caused by a defect in workmanship or materials, your supplier will repair (or at our joint option, replace) the unit without charge, return freight prepaid.

PLEASE DON'T VOID YOUR WARRANTY BY:

1. Making alterations to the product.
2. Repairing or attempting to make repairs by anyone other than an authorised MotorScrubber agent.
3. Mistreating, misusing or improperly maintaining or operating the product.

*Terms and conditions may vary depending on your Country, please contact your local supplier for exact terms.

