

NextGen™

B O I L E R

*The electric boiler with twice the features
that installs in less than half the time*



The NextGen Boiler is the most modern and complete electric boiler on the market.

Engineered into one attractive plug-and-play system, it includes:

- *Stainless steel heat exchanger*
- *Circulating pump*
- *Expansion tank*
- *Air vent*
- *Safety relief valve*
- *User-friendly control panel*

Radiant floor heating has never been easier for the installer.

Just add PEX!



NextGen BOILER™

Just add PEX

STANDARD FEATURES

- UL listed
- 4 -14.4 kW output
- 13,652 - 49,147 BTU output
- Modulated three staged heating
- Temperature output 85°-140°F
- Stainless steel heat exchanger
- Wilo Star 21, three speed circulating pump
- Primary/secondary pump relay control
- Flat expansion tank housed inside the boiler casing, on the back side.
- Outdoor compensation/reset
- Redundant safety controls
- Automatic air vent
- Magnetic filter
- Low pressure cut off
- Off-peak capability

CONTROL PANEL FEATURES

- Inlet and outlet temperature readings
- Precise temperature control
- Flow rate reading (GPM)
- Pressure reading (psi)
- BTU output reading
- Fault code reading
- Pump exercise mode

WARRANTY INFORMATION

Kospel SA, warrants and WH Response LLC carries out, the NextGen Boiler to the original purchaser to be free from manufacturing defects in materials and workmanship for a period of 24 months from the date of sale.

Air Vent

Manual high limit

Stainless steel heat exchanger

Auto reset high limit

Control panel

Flat expansion tank housed inside the boiler casing, on the back side.

Wilo circulating pump

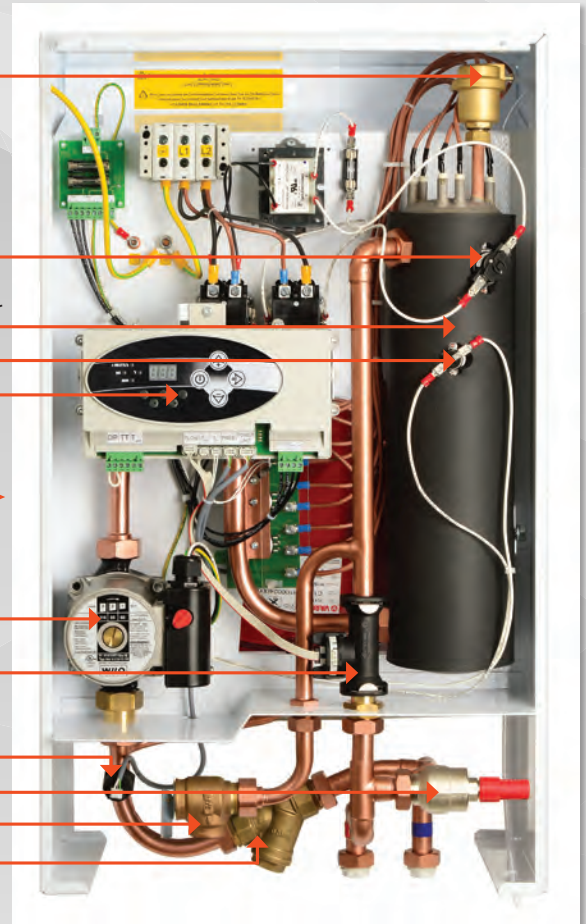
Flow sensor

Pressure sensor

Differential bypass valve

Safety relief valve

Magnetic filter



NextGen Boiler: comparison to the competition

	NextGen BOILER	Competitors		
		1	2	3
Circulating Pump - Plumbed	√			
Circulator Post/Purge Operation	√		√	
Circulating Pump Exerciser	√			
Circulating Pump Switch with Auxiliary Relay	√		√	√
Expansion Tank - Plumbed	√			
Air Vent - Plumbed	√			
30 psi Relief Valve - Plumbed	√			√
Pressure Differential Valve	√			
Outdoor Compensation/Reset	√		√ upgrade	√
Digital SWT Controller	√			√
External Diagnostic Lights	√		√	√
Modulation	√	√	√	√
Digital Temperature Gauge	√			
Digital Pressure Gauge	√			
Off Peak Connections	√	√	√	√
Labor Savings	√			
Heat Exchanger Material	Stainless Steel	Composite Plastic	Rolled Steel	Stainless Steel

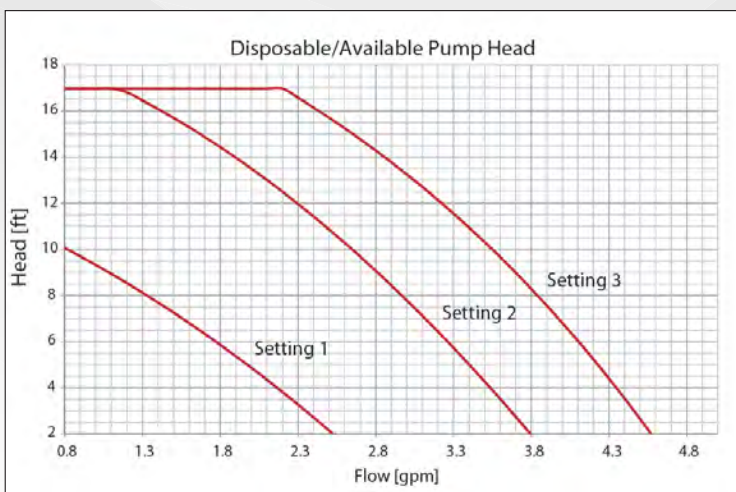
WHY THE NEXTGEN BOILER?

While some radiant heating installations look like science projects gone wrong, the NextGen Boiler achieves a professional installation each and every time due to its innovative and compact design. The time saved on installation labor is attractive to both the contractor and the homeowner. The NextGen Boiler is manufactured to the highest standards and will exceed expectations for many years to come.



NextGen Boiler Ratings and Specifications

Model number	NextGen - 4	NextGen - 6	NextGen - 8	NextGen - 12	NextGen - 14.4
Boiler Rated Power	4 kW	6 kW	8 kW	12 kW	14.4 kW
	13,652 Btu/h	20,478 Btu/h	27,304 Btu/h	40,956 Btu/h	49,147 Btu/h
Voltage	240 V	240 V	240 V	240 V	240 V
Rated Current	16.66 A	25.0 A	33.3 A	50.0 A	60 A
Breaker Quantity - Amps	1 @ 30 amp	1 @ 40 amp	1 @ 50 amp	1 @ 60/70 amp	1 @ 80 amp
Number of Heating Elements	3	3	3	3	3
Element Resistance / Each	43.3 Ω	28.8 Ω	21.6 Ω	14.4 Ω	12.0 Ω
Operating Temperature Range	85°-140° F				
Inlet / Outlet Pipe Thread	G 3/4" (internal thread)				
Expansion Vessel (14 psi.)	1.6 Gallons				
Safety relief valve rating	30 psi				
Maximum pressure	30 psi				
Minimum pressure	7 psi				
Weight	68.5 Lbs.				
Dimensions L x W x D	28" x 17" x 9 - 7/8"				
Minimum Flow Rate gpm	1.1		1.32		



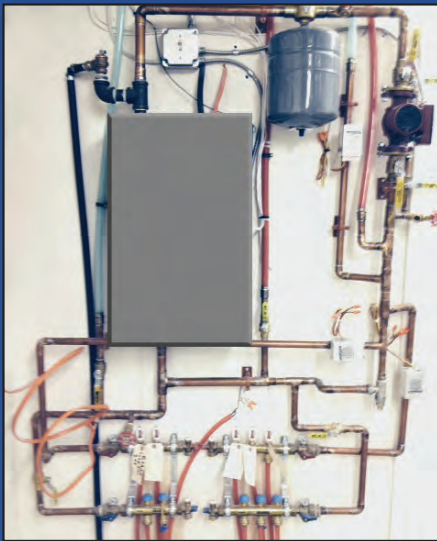
Circulating pump - Wilo Star S 21 U 15.3 speed	
Circulating pump voltage	120V, 60Hz
Circulating pump Amps	.97
Speeds	3 speed
Fuse rating	1.0 amp
Electrical circuit breaker - 15 amp @120 VAC	

NextGen™ BOILER

*The electric boiler with twice the features
that installs in less than half the time*

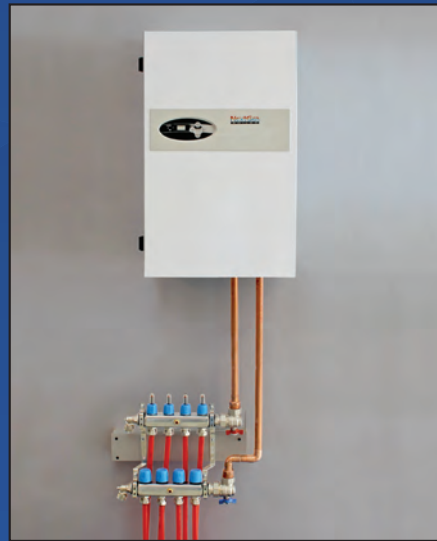
The NextGen Boiler is an hydronic appliance that allows for consistent, professional installation for radiant heating applications. Take the complexity out of the mechanical room and replace it with peace of mind for the homeowner. All boiler parts and pieces (expansion tank, circulating pump, air vent, safety relive valve, and heat exchanger) are housed within the unit, for an aesthetically pleasing appearance.

Which would your customer prefer?



Traditional boiler
installation
Labor-intensive science project

vs.



NextGen Boiler
installation
Professional comfort system