



KTM Side Panel Fuel Tank Installation Instructions 04-07

This fuel tank fits 2004-2005 KTM 250/400/450/525 KTM 4-strokes and 2004-2007 KTM two-stroke motorcycles. **Please call if you have any questions regarding the installation or use of this product.**

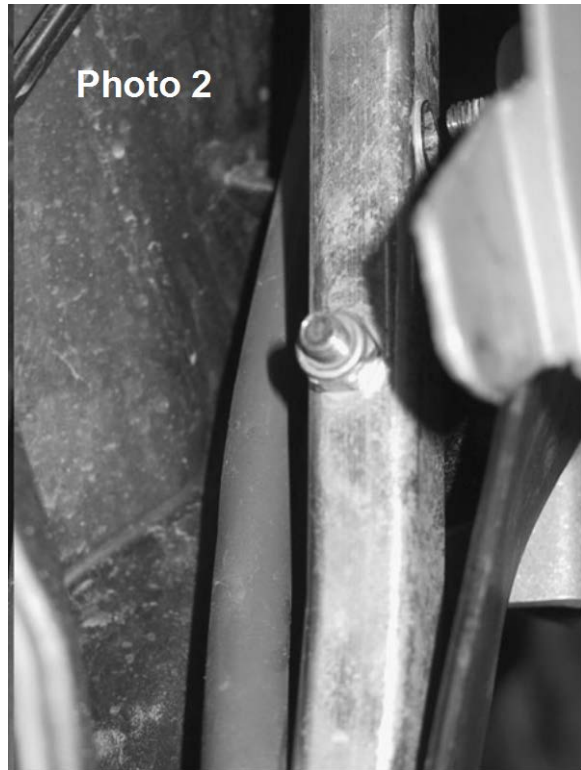
Cautions:

- 1) Improper installation, service or maintenance of this product can cause injury or property damage. Read these directions thoroughly before installation. Only a trained and qualified mechanic should install this product.
- 2) **Any fuel leaks will render this product dangerous and unusable, so inspect it carefully after you fill it with fuel and after every ride. Discontinue use if you notice any leakage.**
- 3) Use care when installing the various fasteners and fittings into the tank. If over tightened you could cause a leak.
- 4) Installation of this tank requires a basic knowledge of mechanical principles, proficient use of hand tools (including drill and tap), and common sense. Please read all of the instructions prior to beginning the installation.

04-05 KTM Side Panel Fuel Tank – Parts List

Qty	Description	Notes
1	1.1 Gallon plastic fuel tank	Black or Orange
1	¼ fuel line (clear)	26 Inches
1	¼ NPT x ¼ barb fitting	Pre-Installed in tank
1	In-line Fuel Petcock	
1	Upper Steel Mounting Bracket-Long	
1	Fuel Cap, Small	
4	6 mm Fender Washers	
1	6 x 16 mm Standard Flange Head bolt	
1	6 x 70 mm Reduced Flange Head Bolt	
1	“T” Fitting	
1	Custom Aluminum Cone	
1	Lower Mounting Brkt.	
2	6 x 45 mm CS bolts	
3	6 mm Nylock Nuts	
2	1” x 3/8” Compression Tubing	Pre-Installed in Tank
1	6 mm standard washer	

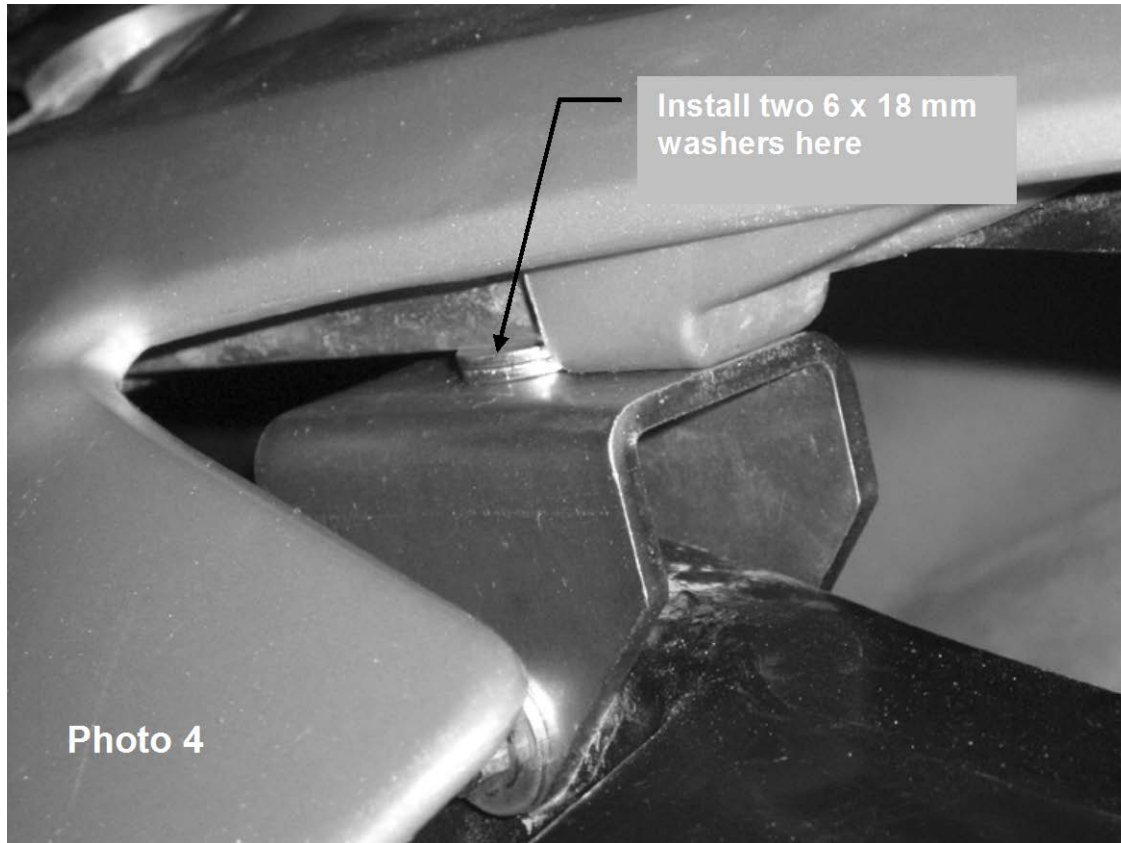
1. Remove airbox cover. Drill stock rivet nut in frame tube through with a ¼" drill as shown in Photo 1. Drill completely through frame tube. We suggest you make a small guide hole in the top of the frame tube first so that you drill straight through the frame member and not come out the side of the frame tube.



2. Install Lower mounting bracket as shown in Photo 3 noting its orientation. Install the aluminum cone into the recess at the bottom of the stock airbox, and then bolt the bracket on with the 6 x 70 mm bolt. Nylock nut threads to top of bolt on top of frame tube as shown in photo 2.



3. Install the upper mounting bracket shown in Photo 4 using the 6 x 16 mm flange head bolt. Note that in either the MXC or the EXC installation, two of the 6 x 18 mm fender washers (three for the EXC) should be installed between the bracket and the subframe. The counter-sunk hole should be positioned toward the rear wheel. Leave the bracket slightly loose until step 5.

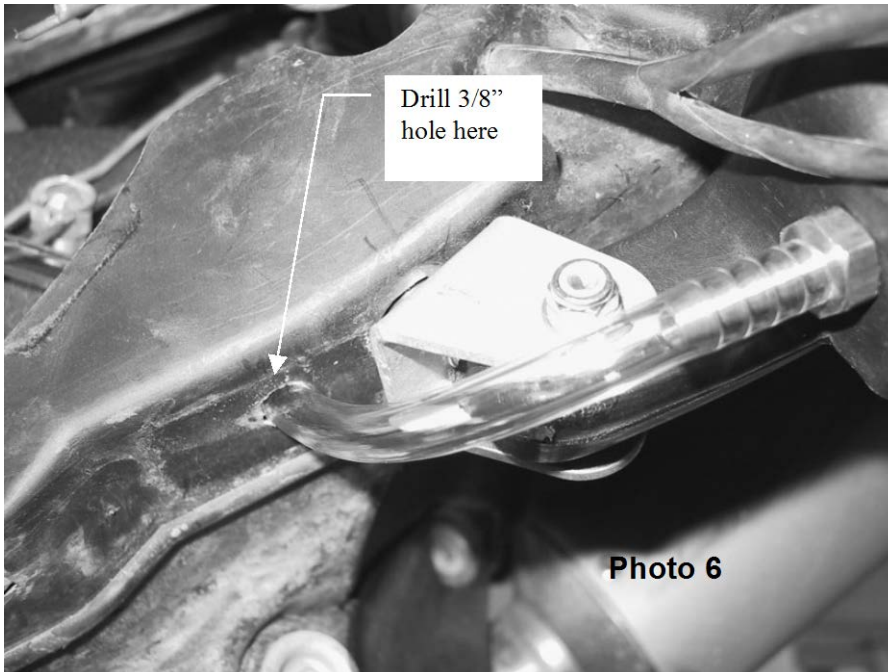


The best routing for the fuel line (Photo 5 & 6) requires drilling holes in the airbox. See Step 4 for hole locations.

4. Drill a 3/8" hole at the front left corner of the airbox as shown in Photo 6. Make sure the location you choose will not result in the hole coming out behind the frame tube or into the rubber airbox boot. **Be very careful drilling this hole.**

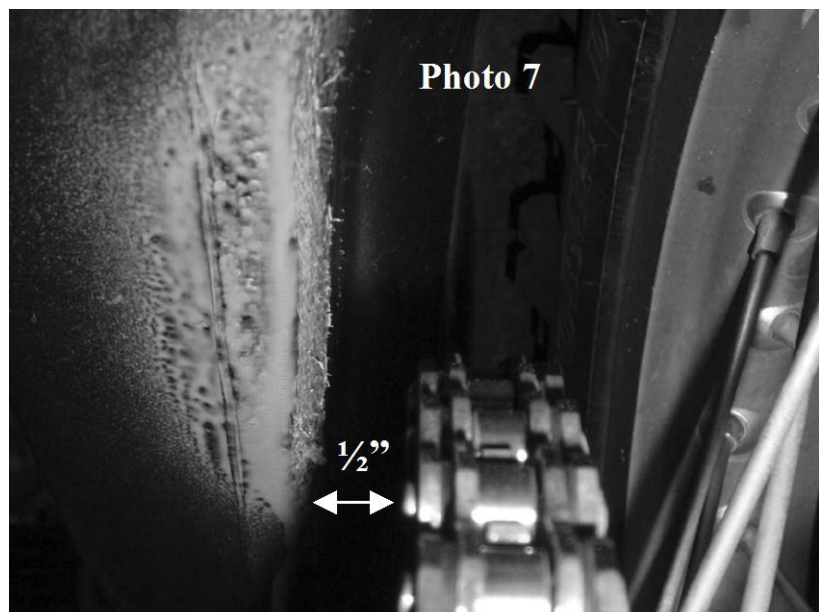


Drill another 3/8" hole as shown in Photo 6.

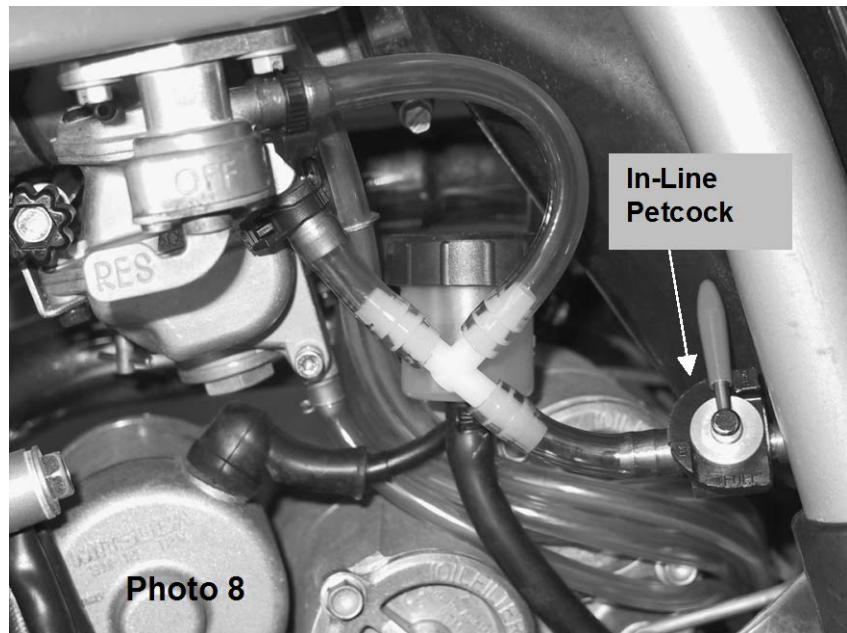


5. Install the tank to the lower mounting bracket. Do not fully tighten. The countersunk 6 x 45 mm bolt installs from the backside. Push the tank up to align the upper mount with the upper aluminum bracket. Also, the upper tank mount is slotted to allow you to move it forward or backward to get the best alignment. Tighten the bolt that secures the upper bracket to the frame once you have it positioned properly and then install the 6 x 45 mm countersunk bolt that holds the top of the side panel tank. Once more, install this bolt from the backside. You will probably need to use an Allen wrench to get the bolt to thread through the bracket prior to installing the nut.

6. **Check Fit** – We suggest that you quickly remove the rear shock to check clearance between the tank and the rear sprocket when the suspension is compressed. The KTM rear subframe is very flexible and if it is bent it can cause an interference problem between the tank and sprocket. There should be about 1/2" between the lower edge of the tank and the sprocket as shown in Photo 7.



7. Run the section of 3/2 inch fuel line from the 1/4" barb in the fuel tank, through the airbox to the area under the carb. Cut the fuel line about 2 inches from where it exits the airbox and install the inline petcock as shown in Photo 7. We like to install the petcock such that the lever position is up when the petcock is off. Add another 1.75 inches of fuel line to the other end of the petcock and install the 1/4" plastic "T". Finish the installation of the fuel line with a section of tubing to the carb inlet and another to the main petcock as shown in Photo 8.



Operation

Safe operation of this product depends on your understanding of its features. The Baja Designs Side Panel Fuel tank is designed to provide 1.1 gallons of extra fuel for extended vehicle range. Since the side panel tank is positioned lower than the stock fuel tank, it will overflow through the vent in the cap if both the main petcock and the side panel tank's petcock are turned on at the same time. **The best method of use for this tank is to begin your ride with both tanks full of fuel. Start by turning off the main petcock, and turning on the petcock on the auxiliary tank. When you have used most or all of the fuel in the auxiliary tank, turn its fuel petcock off before turning the main petcock on.**

Baja Designs Inc.
185 Bosstick Blvd. – San Marcos, Ca. 92069
Phone: 760 560-2252
Fax: 760 560-0383
www.bajadesigns.com