

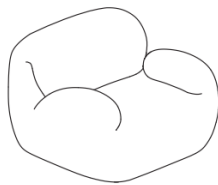
illuminée

Upholstery Options for the Luva collection from Herman Miller

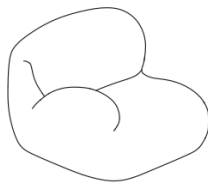
In addition to the fabric and leather upholstery options we offer online for the Luva collection from Herman Miller, we can accommodate all upholstery options offered from Herman Miller that are shown below.

If you see the specific color option you're looking for here and it is not on our website, please contact us at customersupport@illuminee.com or call us at 1 (831) 423-1121 to place your order. Illuminée is an authorized Herman Miller distributor and we are happy to assist you with your order and any questions you may have.

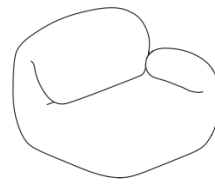
These fabric options are available for the Luva collection including the ottoman, armless, armchair, chaise, one arm seater, sectional and sofa options.



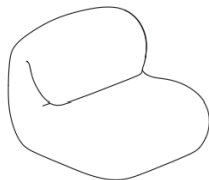
Luva Single Seat, Armchair.



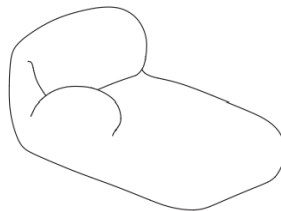
Luva One Arm Right,
Seated Position.



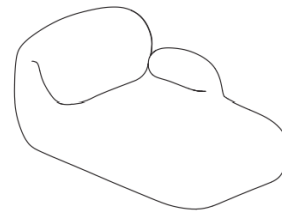
Luva One Arm Left,
Seated Position.



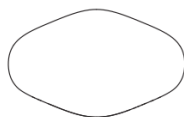
Luva Single Seat, Armless.



Luva Chaise Arm Right,
Seated Position.



Luva Chaise Arm Left,
Seated Position.



Luva Ottoman

Mode - Fabric Upholstery

Made of 80% post-consumer recycled polyester, Maharam Mode combines luxury with sustainability: It offers the look and feel of wool while saving energy and reducing waste. With a tactile, subtly contrasting weave, it appeals to both hand and eye. Plus, it boasts Greenguard and Greenguard Gold certifications, which means it helps minimize indoor air pollution. The only question is: What can't Maharam Mode do?

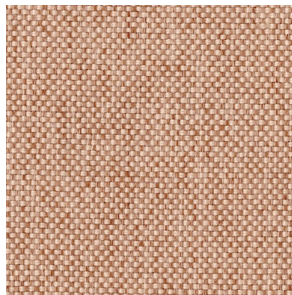
Content: 80% Post-Consumer Recycled Polyester, 20% Polyester

Durability: 100,000 Double Rubs

Origin: USA

Flammability: CAL 117-2013 FR Free

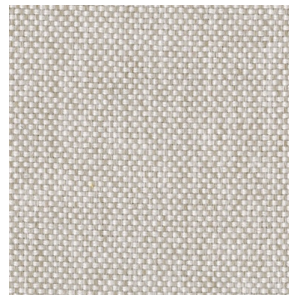
Maintenance: Professional cleaning recommended. Spot-clean with mild spray detergent. Do not use bleach or other harsh chemicals.



Blush



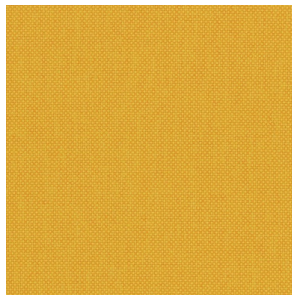
Denim



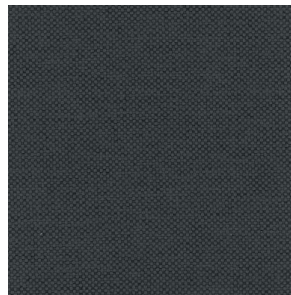
Shell



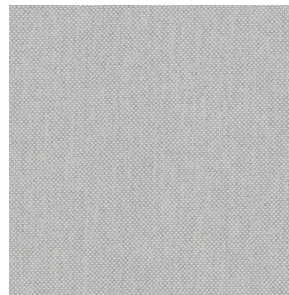
Terra



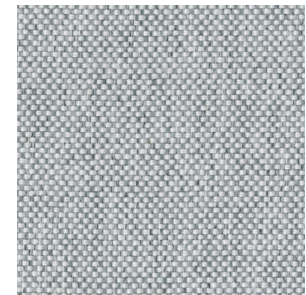
Goldenrod



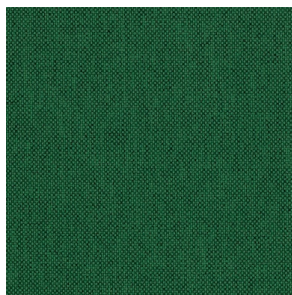
Machine



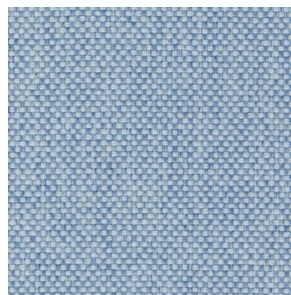
Sycamore



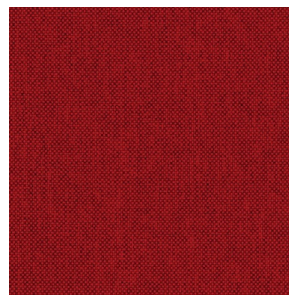
Surf



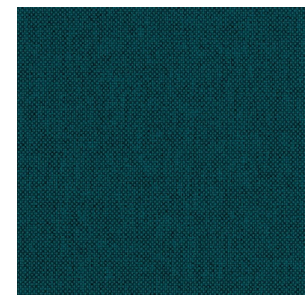
Bonsai



Toile



Kermes



Mallard

Pebble Weave - Fabric Upholstery

Featuring a large, open weave, this fabric is evocative of its namesake texture: a pebbled pathway. It combines a unique blend of fibers to deliver a soft hand and easy-to-clean finish despite its distinctly tactile surface. Designed with black upholstery backing for enhanced durability, it showcases a visually intriguing two-tone appearance.

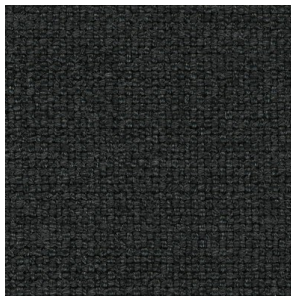
Content: 42% Viscose, 38% Cotton, 14% Acrylic, 6% Polyester

Durability: 30,000 Rubs Martindale Method

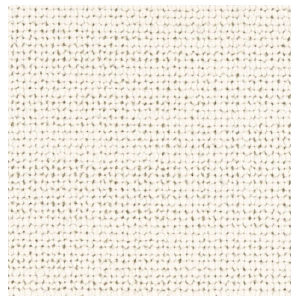
Origin: Italy

Flammability: CAL 117-2013 FR Free

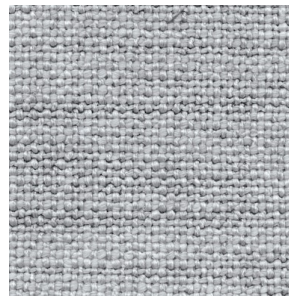
Maintenance: Professional cleaning recommended. Spot-clean with mild spray detergent. Do not use bleach or other harsh chemicals.



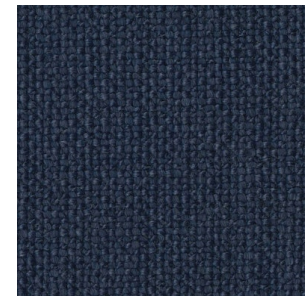
Cinder



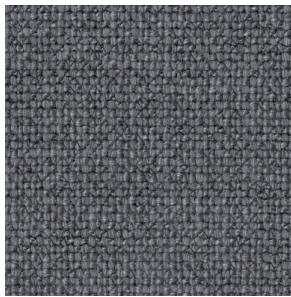
Ecru



Fog



Lapis



Pumice



Sky

Cozy - Fabric Upholstery

Evocative of its name, Cozy features a woolly finish and soft hand. It's woven of pure wool – a natural, renewable fiber that's easy on the environment. Cozy is temperature-regulating and comfortable in every season. A heathered appearance gives it casual sophistication.

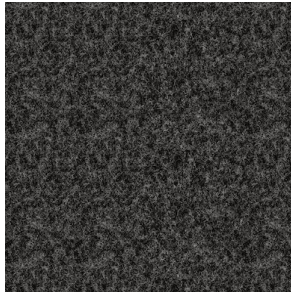
Content: 100% Wool

Durability: 100,000 Rubs Martindale Method

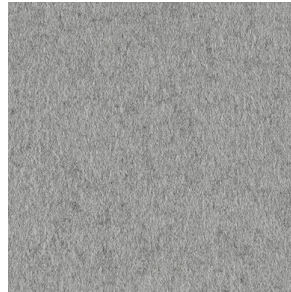
Origin: Lithuania

Flammability: CAL 117-2013 FR Free

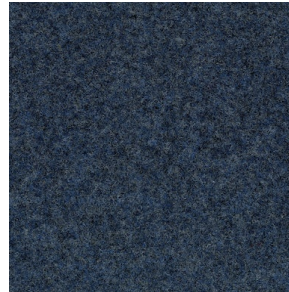
Maintenance: Professional cleaning recommended. Spot-clean with mild, water-free dry cleaning solvent. Vacuum regularly using the proper attachment to avoid pilling.



Heathered Black



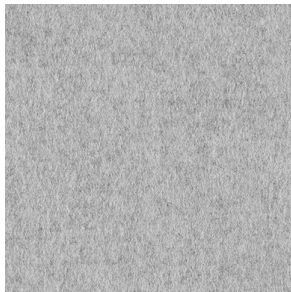
Warm Grey



Heathered Twilight



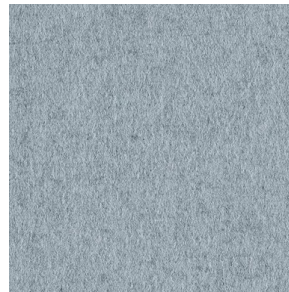
Heathered Rye Grass



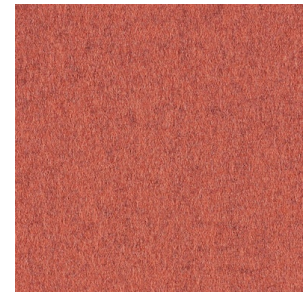
Heathered Cool Grey



Heathered Lagoon



Heathered Blue Grey



Heathered Persimmon



Heathered Loden

Beck - Fabric Upholstery

Wool and nylon each rank among the most durable fibers, so it's not surprising that their combined weave is ideally suited to high-traffic furnishings. Due to its wool content, Beck is wrinkle-resistant, and the addition of nylon delivers high-performing elasticity – it stretches while retaining its shape. Beck features natural color variation and a slightly felted texture for a luxe look and feel. Plus, it's Greenguard Gold certified to minimize indoor air pollution.

Content: 78% Wool, 22% Nylon

Durability: 100,000 Rubs Martindale Method

Origin: Turkey

Flammability: CAL 117-2013

Maintenance: Professional cleaning recommended. Spot-clean with mild, water-free dry cleaning solvent. Vacuum regularly using the proper attachment to avoid pilling.



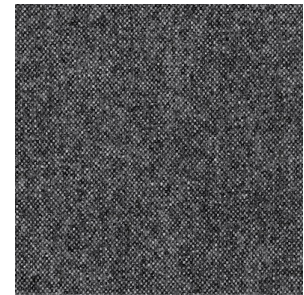
Patisserie (049)



Buckram



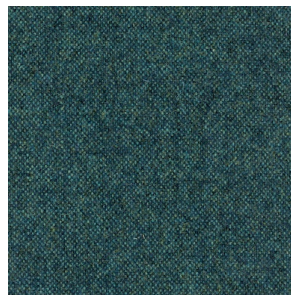
Cornerstone



Molecule



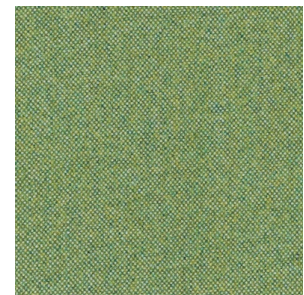
Letterpress



Appalachian



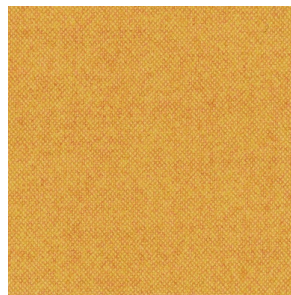
Sea Glass



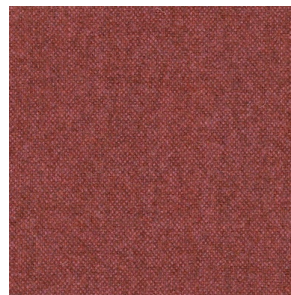
Katydid



Brushstroke



Lambic



Lingonberry

Whim - Fabric Upholstery

Whim is an inviting bouclé fabric with a three-dimensional, textural depth that appeals to both eye and hand. From the French word boucler, which means “to curl,” bouclé is made from a unique weaving technique that creates tight lifts of yarn that are soft to the touch.

Content: 34% Viscose, 33% Acrylic, 17% Wool, 8% Polyester, 4% Linen, 4% Cotton

Durability: 80,000 Rubs Martindale Method

Origin: Italy

Flammability: CAL 117-2013

Maintenance: Professional cleaning recommended. Spot-clean with mild spray detergent. Do not use bleach or other harsh chemicals



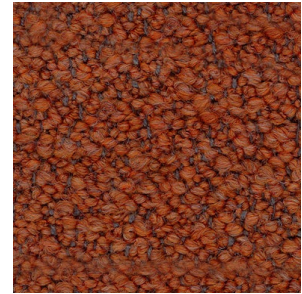
Navy



Pewter



Rye



Terra Cotta



Warm White



Fir



Mustard Seed

Prone - Leather Upholstery

Prone is a premium full-grain leather from Maharam, produced in a boutique tannery in Northern Italy. Prone is minimally finished to highlight the natural beauty of leather and the inherent quality of superior raw materials. The texture of the grain offers a supple hand, while a light silicone finish lends protection against wear. Prone is GREENGUARD Gold Certified.

Grade: Full Grain

Finish: Semi-Aniline

Thickness: 1.1–1.3mm

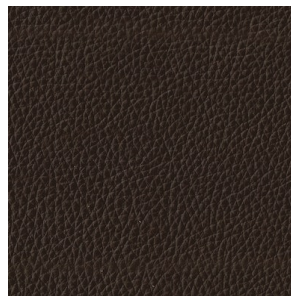
Origin: Italy

Flammability: CAL 117-2013 FR Free

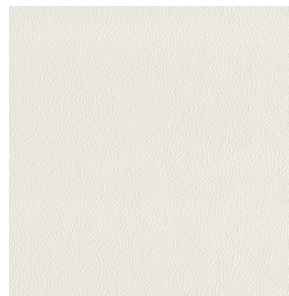
Maintenance: Dust or vacuum regularly. Do not spot clean; clean the entire surface. Wipe clean with a damp cloth, and dry with a clean, soft cloth. For spots and spills, wipe clean with a damp cloth using a lather of mild soap and lukewarm water. For grease stains, wipe clean with a dry cloth and let the remainder of the oil dissipate into the leather – do not use water on grease. Do not use saddle soap, solvents, oils, or other cleaners on leather.



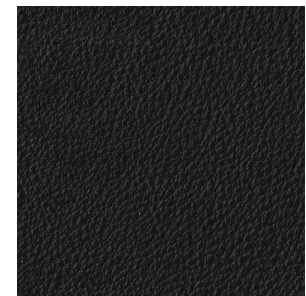
Balsa



Java



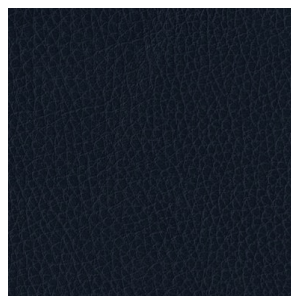
Lotus



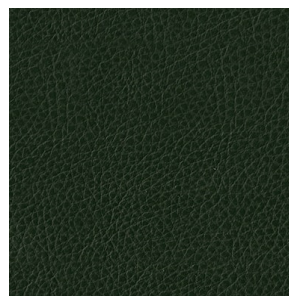
Obsidian



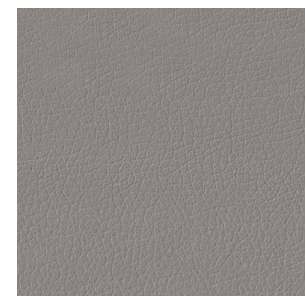
Shore



Sail



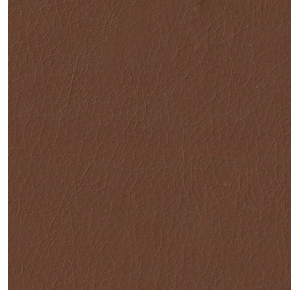
Vine



Script



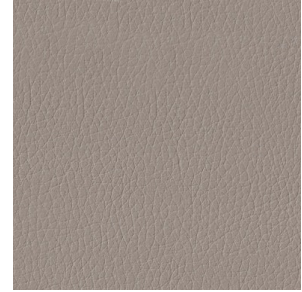
Bricolage



Ledge



Timbre



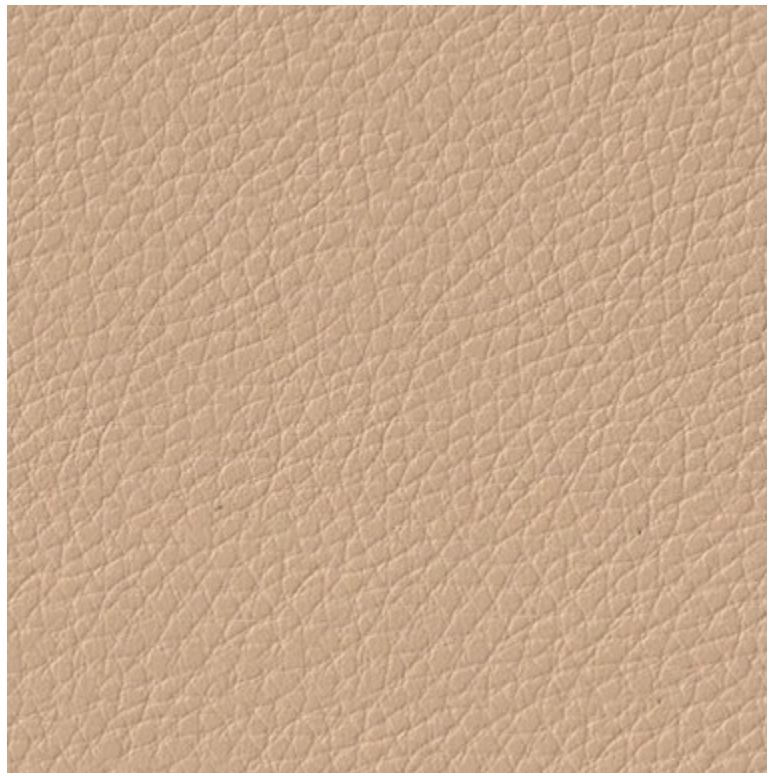
Lute



Mantra



Yarrow



Close Up (Balsa, Prone Leather)

Prone - Leather Upholstery

Raise leather is made from the finest Italian hides of ox and heifer averaging larger than 50 square feet in size, resulting in consistent high-quality upholstery. The thickness alone of this full-grain natural leather speaks for its durability. Natural irregularities highlight the authenticity of the tanning process, with minimal finishing to disturb the grain. A light coloring finish adds water resistance to the leather without altering its natural characteristics, making it perfect for upholstery. The reliability and beauty of Raise makes it a supreme leather option.

Grade: Full Grain

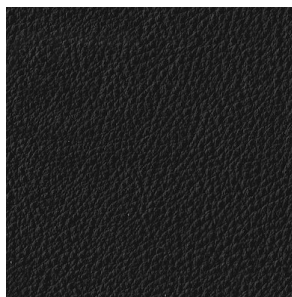
Finish: Semi-Aniline

Thickness: 1.4–1.6mm

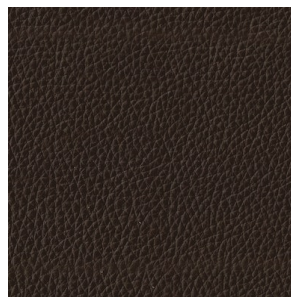
Origin: Italy

Flammability: CAL 117-2013 FR Free

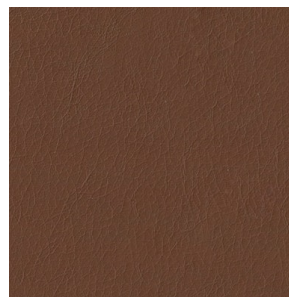
Maintenance: Dust or vacuum regularly. Do not spot clean; clean the entire surface. Wipe clean with a damp cloth, and dry with a clean, soft cloth. For spots and spills, wipe clean with a damp cloth using a lather of mild soap and lukewarm water. For grease stains, wipe clean with a dry cloth and let the remainder of the oil dissipate into the leather – do not use water on grease. Do not use saddle soap, solvents, oils, or other cleaners on leather.



Black



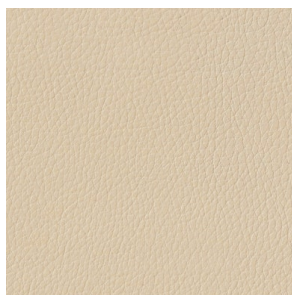
Bruno



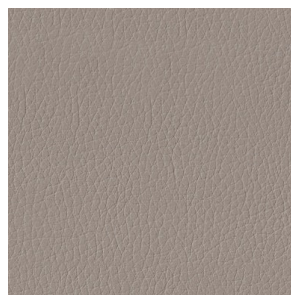
Canyon



Creme



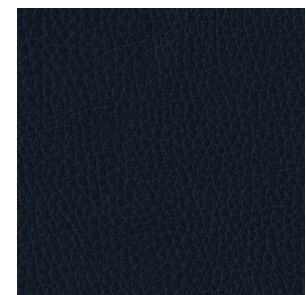
Gesso



Grey



Maize



Oasis



Sand



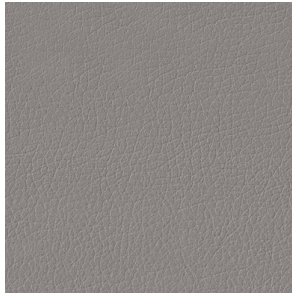
Sienna



Verde



Chiaro



Dovetail



Centurion



Close Up (Maize, Raise Leather)