

SPECIFICATION:

For Specification datasheet, please visit us online at
www.store.lcdparts.net/techsupport

MS610UB-V3	Dimension: 80mm (3.15") X 20mm (0.79" X 6.60mm (0.26")
------------	--

MS610UB-V2 is designed to drive our LSR, SB and UB series LED upgrade kits for 12.1 inch or smaller LCD screens. MS610UB is also compatible with LCD screens that originally equipped with its manufacturer's LED strip. MS610UB-V2 can drive LED strips up to 80V DC (10W). Its compact design allows it to be mounted anywhere.

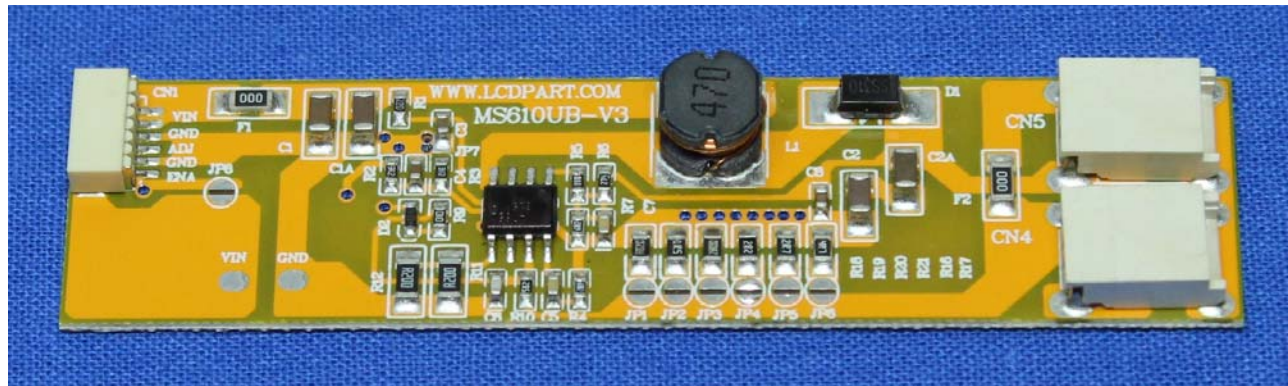
Input connector pin assignments:

CN1

CN1	SYMBOL	DESCRIPTION
1,2	VIN	POWER SUPPLY: 10V to 24V DC
6	ENA	ENABLED & DISABLED CONTROL: 3.0V ON
4	ADJ	BRIGHTNESS CONTROL: 0V=MAX.
3,5	GND	POWER SUPPLY GROUND

CN4 and CN5

PIN NO	SYMBOL	DESCRIPTION
1	VOUT	DC VOLTAGE OUTPUT
2	GND	LOW VOLTAGE RETURN



How to disable Enable

For +12V DC supply:

Just simply shorted JP8. That is it!

For +24V DC supply:

Shorted JP7 and JP8

MoniServ, Inc

lcdpart.com | store.lcdparts.net | lcdparts.net
1600 Noriega Street | San Francisco | CA 94122 | 1-415-682-8685