



COUNTRYMAN ASSOCIATES INC

H6 DIRECTIONAL HEADSET MICROPHONE

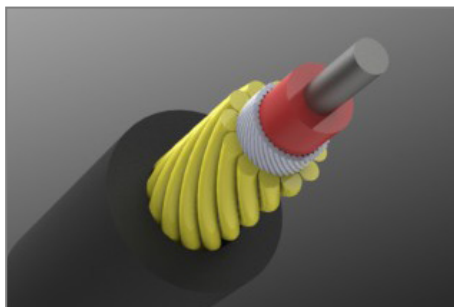
The H6 Directional Headset is the lowest profile uni-directional headset microphone in the world. Combining the exceptional isolation and natural sound quality of the E6D capsule on a lightweight, comfortable, and secure headframe design, the H6D is an ideal choice for acoustically challenging situations. The H6D features a new double-sealed connector with exceptional moisture resistance, a slim and nearly indestructible cable, polar pattern adjustment caps, and three sensitivity options.



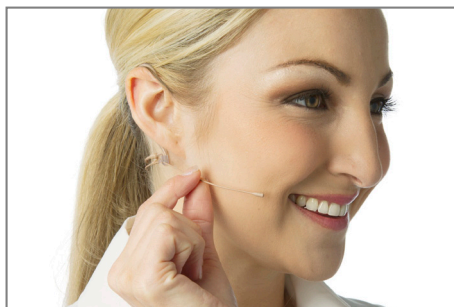
Nearly Invisible: With a diameter of only 0.1" (2.5 mm), the world's smallest uni-directional mic capsule virtually disappears when worn.



Sweat-Resistant Connector: The mic detaches from the cable using a new connector with two levels of sealing against moisture (e.g., sweat).



Extra-Rugged Cable: The 1.2 mm diameter cable uses Aramid strength members and engineered alloys for extreme tensile and flex strength.



Easily Adjustable: The headframe can be adjusted to fit different head sizes and the mic boom slides to get the perfect fit.



Supplied with a 5' H6 Snap-On Cable, carrying case, windscreen, black and white collar clips, and protective cap.

Frequency Response : 30 Hz to 15 kHz

Operating Current : 500 μ A

Operating Voltage : 1 to 2 Volts

Power Supply Voltage :

+3V with 2.7 kOhm Load

+5V with 6.8 kOhm Load

+9V with 15 kOhm Load

Weight : 0.23 oz (6.5 grams)

Cable Break Strength : > 44 lbs (20 kg)

The H6D Headset is available in three sensitivities:

Model H6DW5 for general speaking

Sensitivity: 6.0 mV/Pascal

Equivalent Acoustic Noise: 24 dBA SPL

Overload Sound Level: 125 dB SPL

Model H6DW6 for loud speaking and vocals

Sensitivity: 1.9 mV/Pascal

Equivalent Acoustic Noise: 29 dBA SPL

Overload Sound Level: 135 dB SPL

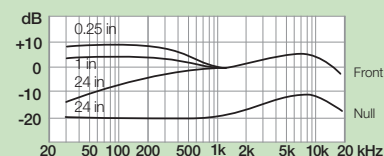
Model H6DW7 for powerful vocals

Sensitivity: 0.60 mV/Pascal

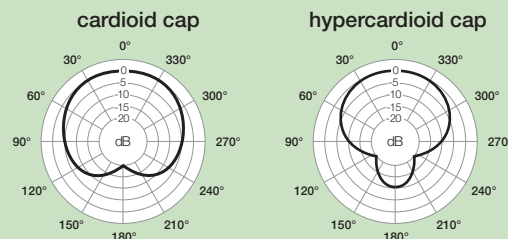
Equivalent Acoustic Noise: 39 dBA SPL

Overload Sound Level: 145 dB SPL

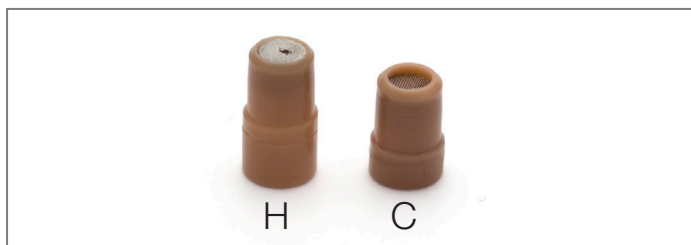
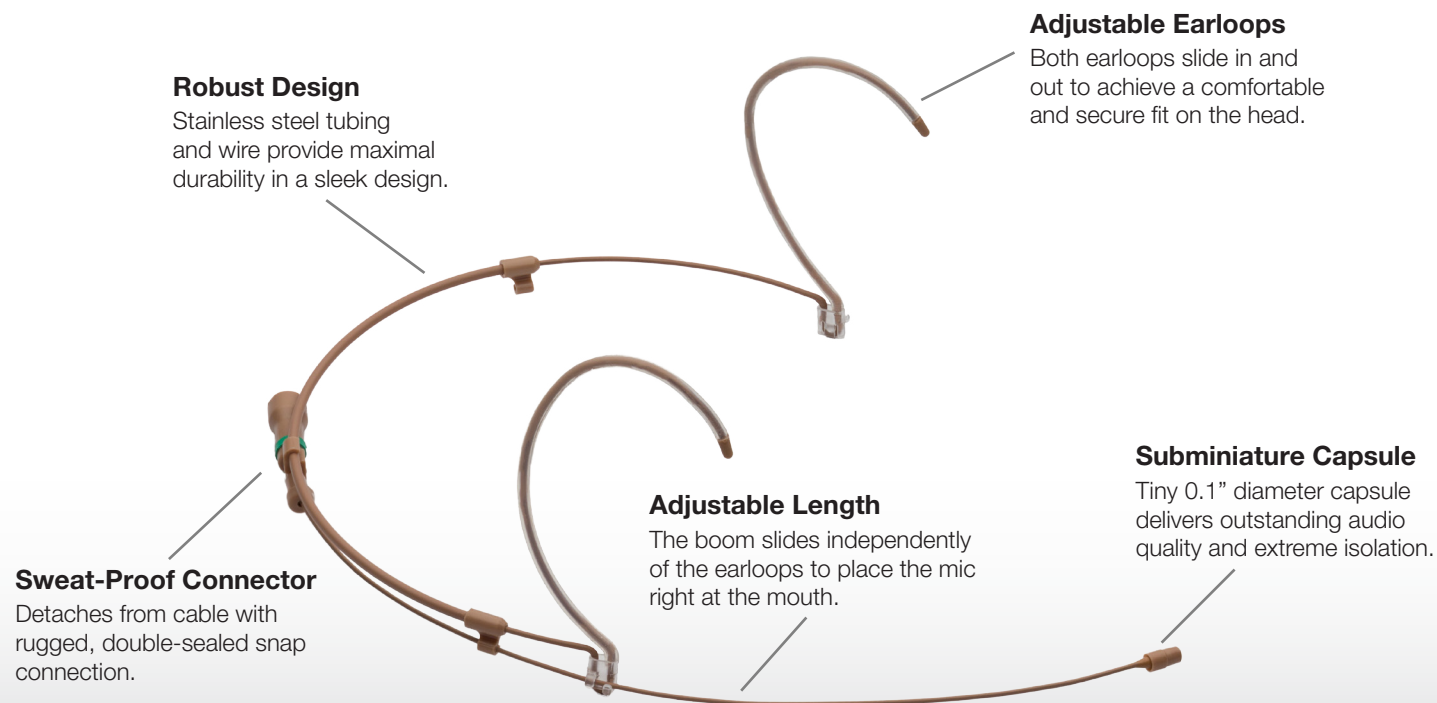
Frequency Response



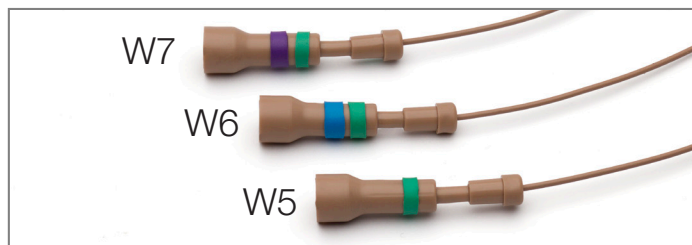
1 kHz Polar Response



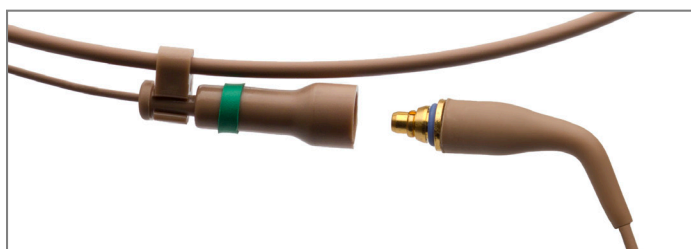
H6 Directional Headset: Features and Use



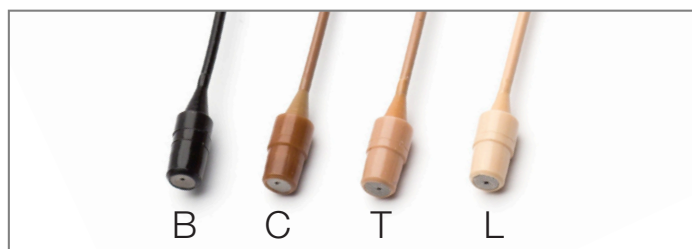
Changeable Caps: Change the polar pattern from hypercardioid to cardioid by swapping the plastic protective cap. Use hypercardioid for maximal isolation, and cardioid for a wider front-lobe (more flexibility in mic placement).



Three Sensitivity Options: The H6D Headset (green band) is available in three sensitivity options. Choose W5 (no second band) for general speaking, W6 (blue band) for loud speaking and vocals, and W7 (purple band) for powerful vocals such as opera.



Detachable Cables: With other microphones, a worn cable means you need to purchase a new microphone. An H6 Snap-On Cable attaches in seconds. Quick-connect super-rugged cables are available in four colors for almost any wireless transmitter, digital recorder or phantom powered XLR mic input providing 3-48V.



Color Options: Tan is the most popular choice, since it is perfect for average Caucasian skin tones, as well as olive complexions. Light beige works well in theatrical applications. Cocoa is ideal for African American skin tones from very light to chocolate, and black is appropriate if you want the mic to be visible.