

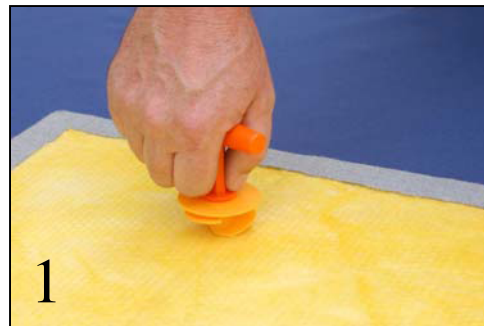
## Primacoustic Snap-On Anchor

Primacoustic Snap-on Anchors are a secure and fast solution for acoustical panel installation. For ceilings or walls, the Primacoustic Snap On anchor is the answer.

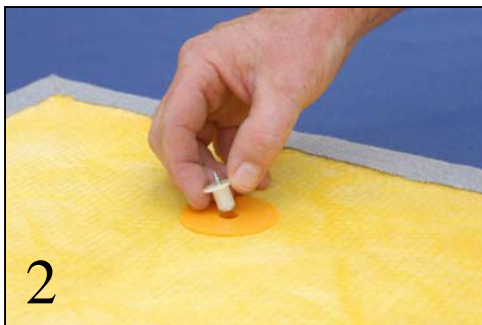
### Installation Instructions



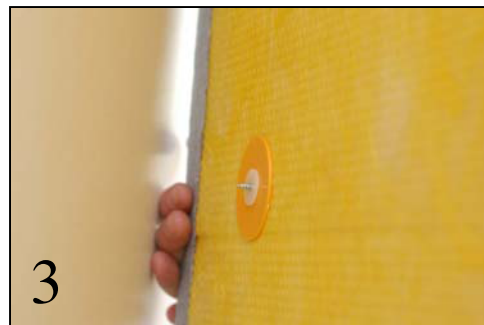
Everything you need to install a panel in **5 EASY STEPS**.



Screw Primacoustic Snap-On Anchors into the back of the panel using the driver tool.



Insert marking plugs into the Snap-On anchors.



Push panel against wall to mark anchor locations.



Screw ratchets to wall at marked locations. (#8 screws recommended)



Firmly push panel onto ratchets to complete installation.