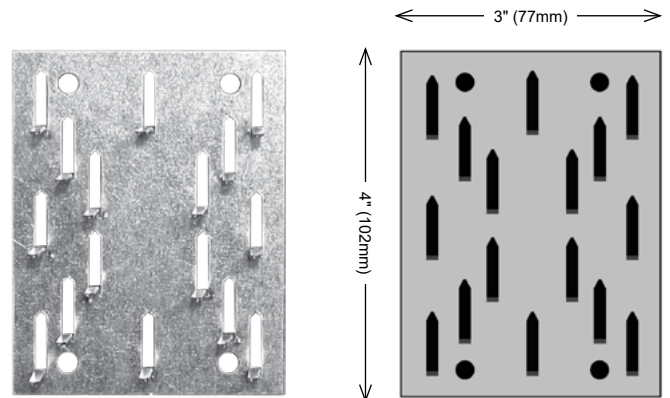


IMPALERS

PUSH-ON IMPALER

Push-on Impalers are designed to provide the installer with a simple, quick and effective method of mounting Broadway glass wool panels onto walls without causing serious surface defacement. Primacoustic Push-On Impalers allow the installer to push the Broadway panel straight onto the Impaler clip, making it easier to align panels in clusters or side by side with accuracy.

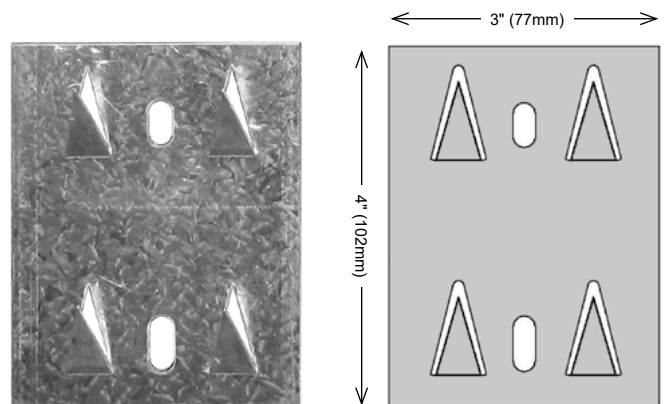
The Push-On Impaler features a series of sharp protruding darts that penetrate the panel and secure it in place. To ensure panels do not get dislodged after installation, applying a dab of construction adhesive to the center of the Impaler during the mounting process adds a level of security and reduces opportunity for tampering. Impalers are installed using typical sheetrock anchors and screws.



SURFACE IMPALER

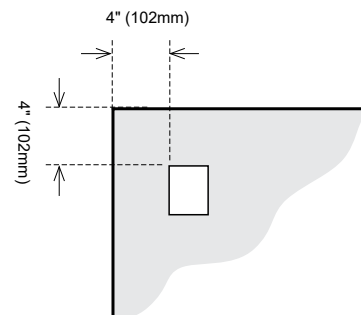
Surface Impalers are designed to provide the installer with a simple, quick, and effective method of mounting Broadway glass wool panels onto walls without causing serious surface defacement. Primacoustic Surface Impalers allow the installer to simply pull the panel down onto the Impaler clip quickly and efficiently, while allowing for some levelling adjustability after the panel is installed.

The Surface Impaler features four sharp darts that penetrate the panel and secure it in place. To ensure panels do not get dislodged after installation, applying a dab of construction adhesive to the center of the Impaler during the mounting process adds a level of security and reduces opportunity for tampering. Impalers are installed using typical sheetrock anchors and screws.



SPECIFICATIONS:

ORDER NUMBER	Push-On: F101-1003-00 Surface: F101-1000-00
MATERIAL	20 gauge galvanized steel
DIMENSIONS	3 x 4" (76 x 102mm)
ATTACHMENT POINTS	2 (Use appropriate fastener for wall surface)
MAX LOAD LIMIT	12 lbs. (5.4 kg.) Dependant on wall fastener
NUMBER PER BOX	24 per box

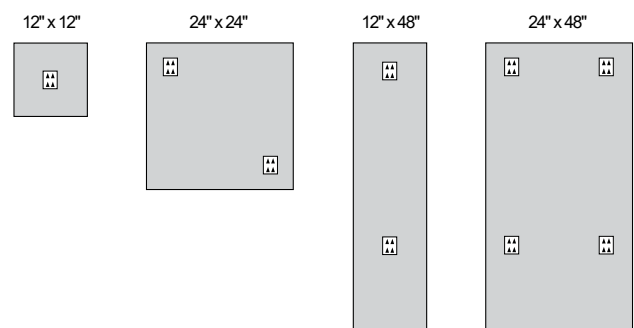


Flush mount impaler clips should be located approximately 4 inches (102mm) or more from the panel edges.

RECOMMENDED MINIMUM NUMBER OF IMPALERS PER PANEL:*

ORDER NO.	DESCRIPTION	HEIGHT	WIDTH	DEPTH	IMPALERS NEEDED*
F121-1212-xx	Scatter Blocks	12" (305mm)	12" (305mm)	1" (25mm)	1
F102-2424-xx	Control Cubes	24" (610mm)	24" (610mm)	2" (51mm)	2
F122-2424-xx	Control Cubes	24" (610mm)	24" (610mm)	2" (51mm)	2
F121-1248-xx	Control Columns	12" (305mm)	48" (1219mm)	1" (25mm)	2
F122-1248-xx	Control Columns	12" (305mm)	48" (1219mm)	2" (51mm)	2
F123-1248-xx	Control Columns	12" (305mm)	48" (1219mm)	3" (76mm)	2
F121-2448-xx	Broadband Panels	24" (610mm)	48" (1219mm)	1" (25mm)	4
F102-2448-xx	Broadband Panels	24" (610mm)	48" (1219mm)	2" (51mm)	4
F122-2448-xx	Broadband Panels	24" (610mm)	48" (1219mm)	2" (51mm)	4
F103-2448-xx	Broadband Panels	24" (610mm)	48" (1219mm)	3" (76mm)	5
F123-2448-xx	Broadband Panels	24" (610mm)	48" (1219mm)	3" (76mm)	5
F103-2448-xx	Broadband Panels	24" (610mm)	48" (1219mm)	3" (76mm)	5
F123-2448-xx	Broadband Panels	24" (610mm)	48" (1219mm)	3" (76mm)	5

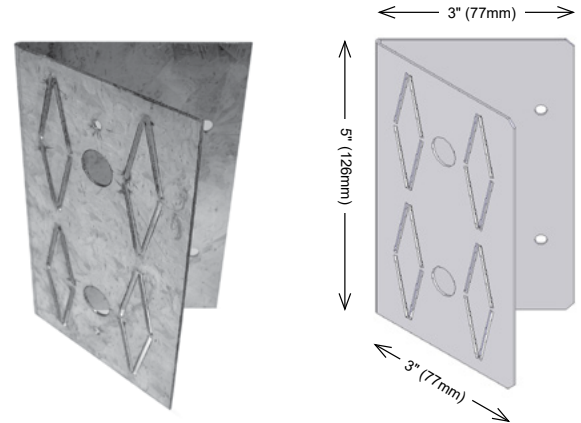
*Primacoustic recommends a certain number of impalers per panel as the minimum required for safe installation based on panel depth and weight. For additional security, you may wish to increase these numbers per panel and also combine with construction adhesive.



CORNER IMPALER

Corner Impalers are designed to provide the installer with a simple, quick and effective method of mounting Broadway™ glass wool acoustic panels into corners to create bass traps. The Corner Impaler features a 45° angle design that positions a panel across a typical 90° corner without causing serious defacement of the wall surface.

The panel is held in place using a series of sharp protruding darts that penetrate the panel to secure it during installation. To ensure panels do not get dislodged after installation, a dab of construction adhesive may be applied to the impaler darts during the mounting process adding a higher level of security and reducing opportunity for tampering. Impalers are installed using typical sheetrock anchors and screws.

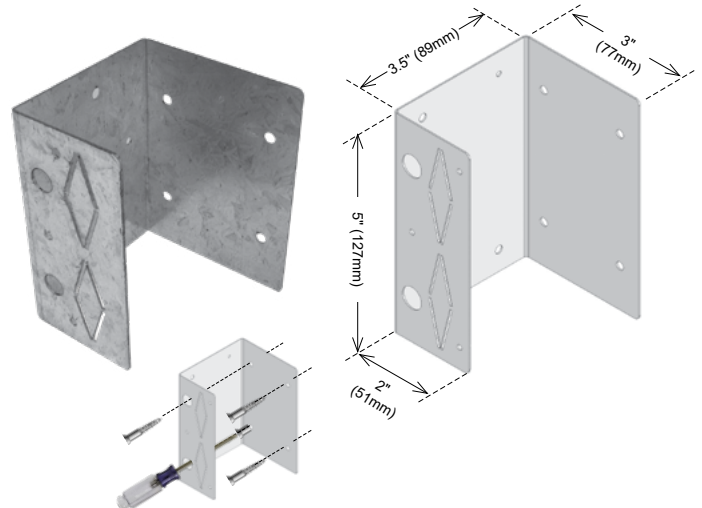


OFFSET IMPALER

Offset Impalers provide the installer with a simple, quick and effective method of mounting Broadway™ glass wool acoustic panels onto wall surfaces while creating an air cavity behind the panel to increase bass absorption.

The Offset Impaler features a U-shaped design that holds the panel from the wall surface by 3.5" making it easy to align with typical 2 x 4" studs. The panel is held in place using a series of sharp protruding darts that penetrate the panel to secure it during installation.

To ensure panels do not get dislodged after installation, applying a dab of construction adhesive to the impaler darts during the mounting process adds a level of security and reduces opportunity for tampering. Impalers are installed using typical sheetrock anchors and screws and therefore, will not cause serious surface defacement to the wall.



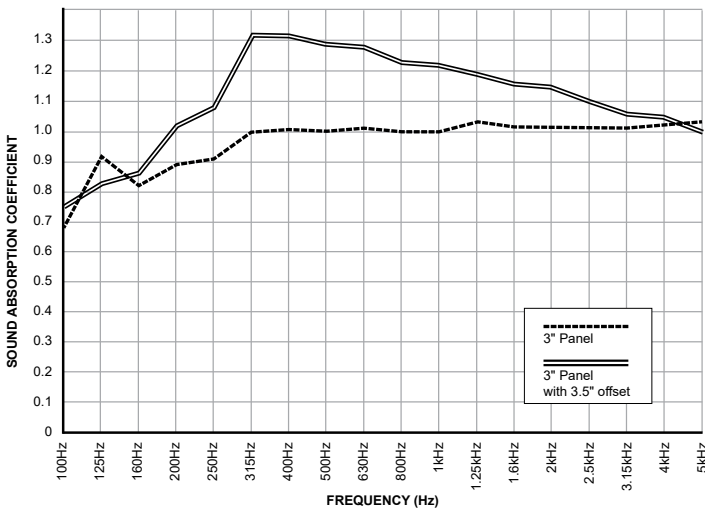
SPECIFICATIONS:

ORDER NUMBER	Corner: F101-1001-00 Offset: F101-1002-00
MATERIAL	20 gauge galvanized steel
DIMENSIONS	3 x 5" (76 x 127mm) Corner = 45° angle for 90° corners. Offset = 3.5" (89mm) from wall surface
ATTACHMENT POINTS	4 (Use appropriate fastener for wall surface)
MAX LOAD LIMIT	12 lbs. (5.4 kg.) Dependant on wall fastener
NUMBER PER BOX	8 pieces

RECOMMENDED NUMBER OF IMPALERS PER PANEL:

ORDER NO.	DESCRIPTION	HEIGHT	WIDTH	DEPTH	IMPALERS NEEDED
F102-2448-XX	Broadband Panels	24" (610mm)	48" (1219mm)	2" (51mm)	4
F122-2448-XX	Broadband Panels	24" (610mm)	48" (1219mm)	2" (51mm)	4
F103-2448-XX	Broadband Panels	24" (610mm)	48" (1219mm)	3" (76mm)	4
F123-2448-XX	Broadband Panels	24" (610mm)	48" (1219mm)	3" (76mm)	4

Three inch Broadway panels with and without a 3.5" air space.



Two inch Broadway panels with Corner Impaler

