

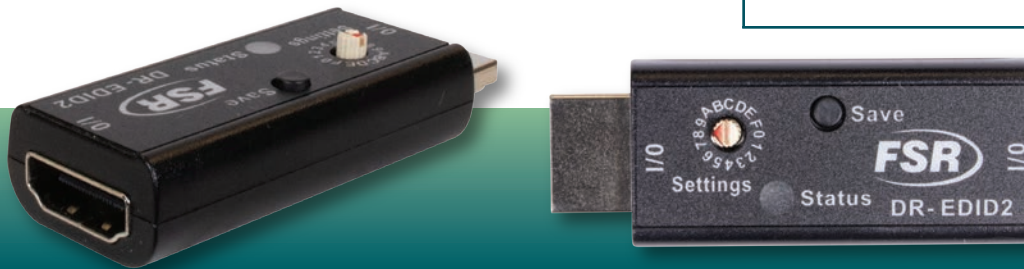
# DR-EDID2

## Emulator

# FSR

## Video Products Group

DR-EDID2



### DESCRIPTION

The DR-EDID2 Emulator is designed to manipulate the EDID information provided to a connected HDMI source or any device connected prior to the unit in the HDMI chain.

The DR-EDID2 is a unique self-powered bidirectional device that can be inserted onto either end of any HDMI system.

EDID refers to a block of information that is passed from the far end of your signal chain, normally the display, to the first device or source. This EDID contains critical information about the capabilities of the connected display, including audio and video formats supported, and available features.

This device allows the installer to substitute one of the 5 preset EDID files or to learn, store, and recall up to 3 EDID files from any display device using quick and easy process in the field. This makes DR-EDID2 an invaluable tool for troubleshooting system problems like unstable image or total loss of image due to excessive cable length. The DR-EDID2 will force the source to limit its output resolution lowering the required bandwidth of the cabling infrastructure thereby restoring reliable operation when left installed permanently.

### SPECIFICATIONS

- HDMI Type A Male
- HDMI Type A Female
- Bi-Color LED Indicator
- Rotary Switch for selecting EDID settings



Item	Part	Description
18616	DR-EDID2	EDID Manager / Learner

# DR-EDID2<sup>TM</sup> EMULATOR



### FEATURES

- 5 preinstalled EDID
- Passive inline device – No external power needed
- Bi-directional (bi-gender). It can be used in either direction
- HDCP 1.4 / 2.2 Compatible
- Hot pluggable
- Supports HDMI 1.3/1.4/2.0
- Supports up to 4K/UHD @ 60Hz
- Learns and Stores up to 3 EDID tables from any Display
- Restores reliable image display to bandwidth limited systems.

### FSR Inc.

244 Bergen Boulevard, Woodland Park, NJ 07424

Phone: 973.998.2300 · Fax: 973.785.4207

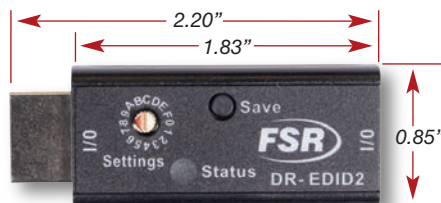
Order Desk: 1-800-332-FSR1

Web: [www.fsrinc.com](http://www.fsrinc.com) · E-mail: [sales@fsrinc.com](mailto:sales@fsrinc.com) LIT1881

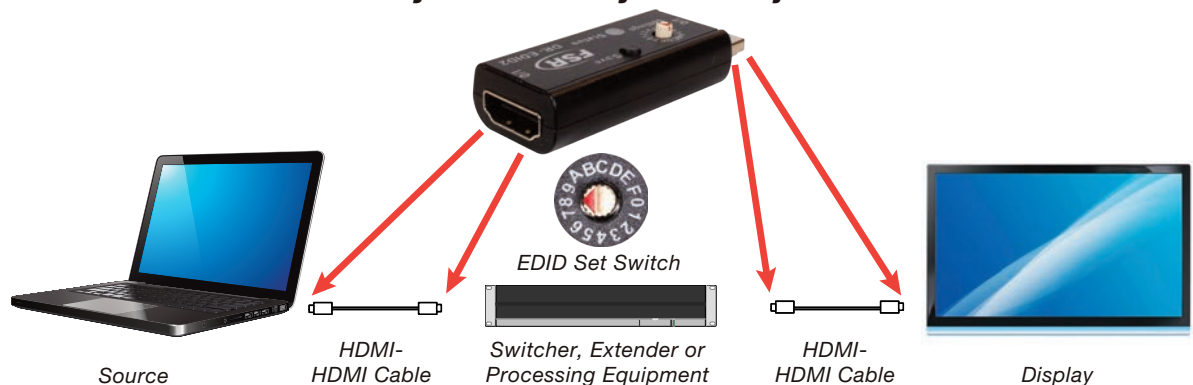
## PRE-INSTALLED EDID

1. Turn the rotary switch from 1 to 5 to select the preinstalled EDID.
2. It is recommended to power cycle all equipment after the emulator is installed or adjusted to ensure HDMI hand shake initialization.

SWITCH	FUNCTION	RESOLUTION
0	Bypass	The DR-EDID2 Does Not Modify the EDID
1	480P	720x480p 59.94/60 (4:3) RGB 444, YC 444, YC 422 2 CHANNEL
2	720P	1280x720p 59.94/60 (16:9) RGB 444, YC 444, YC 422 2 CHANNEL
3	1080P	1920x1080p 59.94/60 (16:9) RGB 444, YC 444, YC 422 2 CHANNEL
4	4K30	3840X2160p 29.97/30 (16:9) RGB 444, YC 444, YC 422 2 CHANNEL
5	4K60	3840X2160p 59.94/60 (16:9) RGB 444, YC 444, YC 422 2 CHANNEL
6	LEARN 1	Learn Custom EDID 1 to the DR-EDID2
7	USE 1	USE Custom EDID 1 to the DR-EDID2
8	LEARN 2	Learn Custom EDID 2 to the DR-EDID2
9	USE 2	USE Custom EDID 2 to the DR-EDID2
A	LEARN 3	Learn Custom EDID 3 to the DR-EDID2
B	USE 3	USE Custom EDID 3 to the DR-EDID2
C	NA	Not Used
D	NA	Not Used
E	NA	Not Used
F	NA	Not Used



**Insert Anywhere in the System to Adjust EDID**



### FSR Inc.

244 Bergen Boulevard Woodland Park, NJ 07424

Phone: 973.998.2300 · Fax: 973.785.4207

Order Desk: 1-800-332-FSR1

Web: [www.fsrinc.com](http://www.fsrinc.com) · E-mail: [sales@fsrinc.com](mailto:sales@fsrinc.com)

