

# ez-HSV+

## HDMI to SDI CONVERTER WITH DISPLAY

Now you can monitor HDMI video with ez-HSV+. Features you can check are audio bar, incoming resolution and scaled out resolution. The ez-HSV+ comes with the capability to embed external audio as well to give you a more convenient way to plan your production scheme.



### 24/7 Video Monitoring



Through the 2.7 inch TFT LCD screen, you can monitor the incoming video and in/output source resolution.

### Low Power Consumption



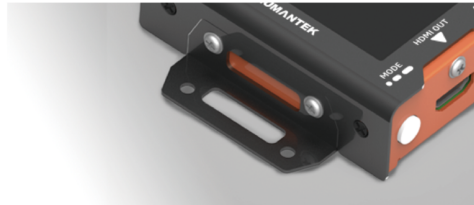
The Maximum power consumption of ez-HSV+ is less than 3 watts. Acceptable voltage ranges from 5v ~ 18v giving the user more flexibility in connecting power. You can also use a power bank to use this converter.

### Audio Level Meter

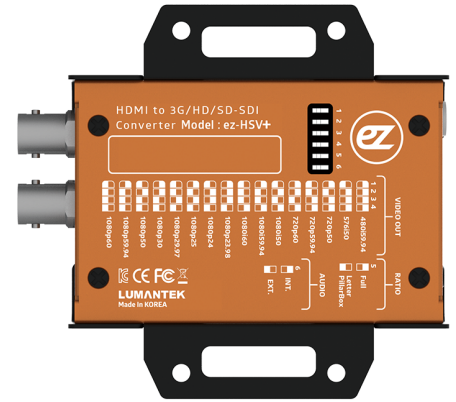
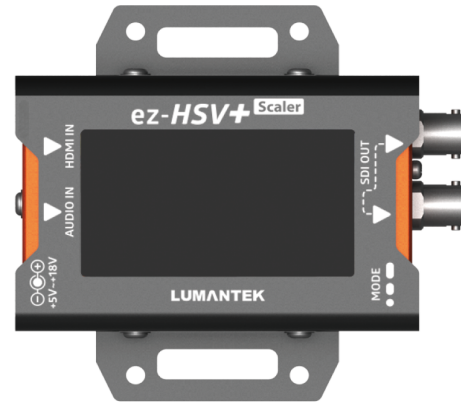


You can also check the sound through the audio level meter on the screen. No more worries with audio!

### Wall mountable



ez-HSV+ comes with wall mounting brackets for installation. If you do not need these brackets, you can simply attach the brackets to the converter for later use.



#### Data Input

Analog Audio Input: Stereo Jack x1  
HDMI Video Input: SD/HD/3G (HDMI Type A) x1  
Video Formats:  
- 720x480i@59.94/60  
- 720x576i@50  
- 1280x720p@50/59.94/60  
- 1920x1080i@50/59.94/60  
- 1920x1080p@23.94/24/25/29.97/30  
- 1920x1080p@50/59.94/60

#### Data Output

SDI Video Output: SD/HD/3G-SDI (BNC 75 $\Omega$ ) x1  
Video Formats:  
- 720x480i@59.94 (DIP SW : 1111)  
- 720x576i@50 (DIP SW : 0111)  
- 1280x720p@50 (DIP SW : 1011)  
- 1280x720p@59.94 (DIP SW : 0011)  
- 1280x720p@60 (DIP SW : 1101)  
- 1920x1080i@50 (DIP SW : 0101)  
- 1920x1080i@59.94 (DIP SW : 1001)  
- 1920x1080i@60 (DIP SW : 0001)  
- 1920x1080p@23.98 (DIP SW : 1110)  
- 1920x1080p@24 (DIP SW : 0110)  
- 1920x1080p@25 (DIP SW : 1010)  
- 1920x1080p@29.97 (DIP SW : 0010)  
- 1920x1080p@30 (DIP SW : 1100)  
- 1920x1080p@50 (DIP SW : 0100)  
- 1920x1080p@59.94 (DIP SW : 1000)  
- 1920x1080p@60 (DIP SW : 0000)

#### Connections

Power : DC Power Input (DC Jack) x1  
DIP Switch : (6 Pole) x1  
Video In/Out Resolution, Video Output Ratio, Audio(INT. or EXT.)  
MODE : (Push Switch) x1  
LCD ON/OFF, Menu Selection

#### Display

2.7 inch TFT LCD : Input Video Display, In/Output Video Resolution Display, Input Audio Level Meter Display

#### Electrical

Power Input: DC +5V to +18V  
Power Consumption: 4W(max.)  
Operation Temperature: 0~45°C

#### Physical

Dimension: 86.3x57.2x26.6 mm (include connector)  
Weight: 0.3 kg (0.66 lbs)

# LUMANTEK

# LUMANTEK