

A woman with long, dark, curly hair is standing on a beach. She is wearing a two-piece bikini with a vibrant, multi-colored leopard print pattern on a white background. The colors include black, blue, pink, purple, and green. She has her right hand raised to her forehead, shielding her eyes from the sun. The background shows the ocean with waves breaking on the shore under a clear blue sky.

elomi

*Live Limitless*

APRIL - DECEMBER 2023

SWIMWEAR UP TO A JJ CUP

## *Notes from the designer*

**“THE SUPPORT AND CONFIDENCE YOU FEEL IN YOUR LINGERIE SHOULD NOT STOP THERE. ELOMI SWIM HAS THE OPTIONS TO MAKE YOU LOOK FABULOUS AND FEEL CONFIDENT. FIND YOUR LOOK AMONGST THE STRIKING PRINTS AND GORGEOUS PLAINS WE HAVE THIS SEASON.”**

This season get ready for fun, sun and surf with our Tropical Falls collection. We've teamed neon-pastel tones together to create this fully charged electric ombre print, and we hope you love the way the colours pop against the black base as much as we do.

Bazaruto is back with all your favourite beach wear essentials in bright Jade. The Adjustable Skirted Bikini Brief is the perfect companion for cocktails by the poolside bar or a stroll down to the beach.

Get your holiday off to the right start with Party Bay, our new rainbow ombre leopard print collection. Featuring a Non-Wired Swimsuit and Adjustable Bikini Brief based on Savaneta which launched last season.

One of our previous season's biggest hits Pebble Cove, has been reinterpreted into a new colourway, featuring an abstract black spot design, on a royal blue ground. A show stopping look wherever you may be.

With lots on offer this season, we trust you'll find swimwear that's perfect for you. Available from a DD to JJ cup, in styles to make every woman feel beautiful.



LIESL GOODMAN  
HEAD OF DESIGN



# CONTENTS

## AW23 COLLECTION

|                |    |
|----------------|----|
| MERCHANDISING  | 11 |
| BAZARUTO       | 16 |
| PARTY BAY      | 12 |
| PEBBLE COVE    | 18 |
| TROPICAL FALLS | 14 |

## CONTINUITY

|               |    |
|---------------|----|
| ESSENTIALS    | 24 |
| MAGNETIC      | 24 |
| PLAIN SAILING | 22 |
| OUR POS       | 25 |



# FREE TO *Be me*

## **SWIMWEAR FOR THE FULLER FIGURE UP TO A JJ CUP**

With amazing support and so many styles to choose from, Elomi Swim makes me feel my best – at the beach or poolside.





ES801402 / ES801472

# PARTY BAY

*Multi*





# TROPICAL FALLS

*Black*



ES801543

ES801106 / ES801185



ELOMI SWIM

# PEBBLE COVE

*Blue*



ES800602 / ES800672

# BAZARUTO

*Jade*

ELONI SWIM



AW23 COLLECTION

---

LIVE IN THE

*Moment*

# Merchandising

When it comes to colours and prints, make the most of Elomi Swim in-store this season. We plan the release dates of our seasonal collections with you, the retailer, in mind so you can show your customers there are many ways to wear and feel great in Elomi.

*Apr*



**PARTY BAY  
MULTI**

*May*



**BAZARUTO  
JADE**



**TROPICAL FALLS  
BLACK**

*Dec*



**PEBBLE COVE  
BLUE**



# Party Bay

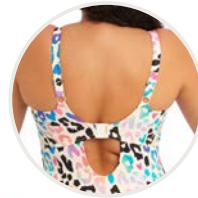
New  
FOR AW23

Get your holiday off to the perfect start with Party Bay - our new rainbow ombre leopard print collection featuring pops of jade green, sapphire blue and bubblegum pink dancing across an ivory ground. Available styles include Elomi Swim's signature UW Bikini Top with ruffle detailing that can be worn on or off the shoulders.



MULTI (MUI)  
Fashion/Available:

LYCRA®  
XTRA  
LIFE™



Back Detail

LYCRA®  
XTRA  
LIFE™



## NON WIRED PLUNGE SWIMSUIT · ES801444



- Swimsuit is bra sized to ensure suitable support and shaping for a plunging neckline
- Based on ES7280 Plain Sailing Swimsuit, with a plunging neckline which is connected by a metallic ring at the bust for support
- Less structured shape without moulded cups, for ease of wear and a lighter look
- Suspended shelf is set into wide underband frame for support
- Clasp fastening at back with low scoop keyhole back, for ease of dressing
- Adjustable length shoulder straps
- Cut from a lightweight fabric with LYCRA® XTRA LIFE™

|        |            |            |            |
|--------|------------|------------|------------|
| UK     | 36-42 F/FF | 34-42 G/GG | 34-42 H/HH |
| EU     | 80-95 G/H  | 75-95 I/J  | 75-95 K/L  |
| FR     | 95-110 G/H | 90-110 I/J | 90-110 K/L |
| AUS/NZ | 14-20 F/FF | 12-20 G/GG | 12-20 H/HH |
| US     | 36-42 G/H  | 34-42 I/J  | 34-42 K/L  |
| JP     | 80-95 H/I  | 75-95 J/K  | 75-95 L/M  |

PRICE \_\_\_\_\_

## UW BIKINI TOP · ES801406



- Based on Plain Sailing ES7284 UW Plunge Bikini Top with narrow straps and a ruffle that can be worn on or off the shoulders
- Fully printed cups, straps and back are cut from a lightweight printed fabric with LYCRA® XTRA LIFE™
- Fully lined with a light but supportive fabric for a bikini look with the fit of an Elomi Lingerie bra
- Powernet back lining for extra support
- Adjustable length shoulder straps

|        |           |             |            |
|--------|-----------|-------------|------------|
| UK     | 38-44 DD  | 36-42 E-FF  | 34-42 G-H  |
| EU     | 85-100 E  | 80-95 F-H   | 75-95 I-K  |
| FR     | 100-115 E | 95-110 F-H  | 90-110 I-K |
| AUS/NZ | 16-22 DD  | 14-20 E-FF  | 12-20 G-H  |
| US     | 38-44 DD  | 36-42 DDD-H | 34-42 I-K  |
| JP     | 85-100 F  | 80-95 G-I   | 75-95 J-L  |

PRICE \_\_\_\_\_

LYCRA®  
XTRA  
LIFE™



**UW PLUNGE BIKINI TOP · ES801402**



- Based on the Plain Sailing ES7284 UW Plunge Bikini Top
- Fully printed cups, straps and back are cut from a lightweight printed fabric with LYCRA® XTRALIFE™
- Neckline has concealed elastic for ease of fit
- Fully lined with a light but supportive fabric for a bikini look with the fit of an Elomi Lingerie bra
- Powernet back lining for extra support
- Adjustable length shoulder straps
- Additional lining in cups to prevent show through

|        |             |            |            |
|--------|-------------|------------|------------|
| UK     | 36-44 E-FF  | 34-42 G-HH | 34-40 J-JJ |
| EU     | 80-100 F-H  | 75-95 I-L  | 75-90 M-N  |
| FR     | 95-115 F-H  | 90-110 I-L | 90-105 M-N |
| AUS/NZ | 14-22 E-FF  | 12-20 G-HH | 12-18 J-JJ |
| US     | 36-44 DDD-H | 34-42 I-L  | 34-40 M-N  |
| JP     | 80-100 G-I  | 75-95 J-M  | 75-90 N-O  |

PRICE \_\_\_\_\_

LYCRA®  
XTRA  
LIFE™



**MID RISE BIKINI BRIEF · ES801472**



- High leg shape inspired by the EL4386 Charley High Leg Brief in Elomi Lingerie
- Front and back are cut from a lightweight printed fabric with LYCRA® XTRALIFE™
- Waist height brief
- Fully lined

|        |       |
|--------|-------|
| UK     | 12-26 |
| EU     | 38-52 |
| FR     | 40-54 |
| AUS/NZ | 12-26 |
| US     | 8-22  |

PRICE \_\_\_\_\_

LYCRA®  
XTRA  
LIFE™



**BIKINI BRIEF · ES801470**



- Based on the ES800672 Bazaruto Mid Rise Brief
- Front and back are cut from a lightweight printed fabric with LYCRA® XTRALIFE™
- Adjustable deep criss-cross tie detail at sides, for customisable coverage
- Waist height brief
- Fully lined

|        |       |
|--------|-------|
| UK     | 12-26 |
| EU     | 38-52 |
| FR     | 40-54 |
| AUS/NZ | 12-26 |
| US     | 8-22  |

PRICE \_\_\_\_\_



# Tropical Falls

New  
FOR AW23

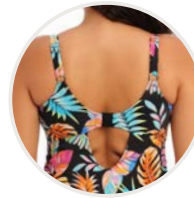
This season get ready for fun, sun and surf with our Tropical Falls collection. We've teamed neon pastel tones together with tropical leaves to create this fully charged, electric print that really pops against the back base. All styles have been crafted from a lightweight fabric that contains post-consumer recycled nylon, as well as Creora® highclo™, which offers a higher level of chlorine resistance for longer garment life.



BLACK (BLK)  
Fashion/Available:

CREORA®  
HIGHCLO™

CONTAINS  
recycled  
CONTENT



Back Detail

CREORA®  
HIGHCLO™

CONTAINS  
recycled  
CONTENT



## NON WIRED SWIMSUIT · ES801543



- Based on ES800943 Kotiya Non Wired Swimsuit, but without the centre front cut out strapping detail
- Swimsuit is bra sized to ensure suitable support and shaping for a plunging neckline
- Less structured shape without moulded cups, for ease of wear and a lighter look
- Suspended shelf is set into wide underband frame for support
- Clasp fastening at back with low scoop keyhole back, for ease of dressing
- Adjustable at side for a choice of coverage
- Cut from a lightweight printed fabric with a recycled nylon and Creora® highclo™
- Adjustable length shoulder straps

|        |            |            |            |
|--------|------------|------------|------------|
| UK     | 36-42 F/FF | 34-42 G/GG | 34-42 H/HH |
| EU     | 80-95 G/H  | 75-95 I/J  | 75-95 K/L  |
| FR     | 95-110 G/H | 90-110 I/J | 90-110 K/L |
| AUS/NZ | 14-20 F/FF | 12-20 G/GG | 12-20 H/HH |
| US     | 36-42 G/H  | 34-42 I/J  | 34-42 K/L  |
| JP     | 80-95 H/I  | 75-95 J/K  | 75-95 L/M  |

PRICE \_\_\_\_\_

## UW PLUNGE BIKINI TOP · ES801502



- Based on the Plain Sailing ES7284 UW Plunge Bikini Top
- Fully printed cups, straps and back are cut from a lightweight printed fabric with recycled nylon and Creora® highclo™
- Neckline has concealed elastic for ease of fit
- Fully lined with a light but supportive fabric for a bikini look with the fit of an Elomi Lingerie bra
- Powernet back lining for extra support
- Adjustable length shoulder straps

|        |             |            |            |
|--------|-------------|------------|------------|
| UK     | 36-44 E-FF  | 34-42 G-HH | 34-40 J-JJ |
| EU     | 80-100 F-H  | 75-95 I-L  | 75-90 M-N  |
| FR     | 95-115 F-H  | 90-110 I-L | 90-105 M-N |
| AUS/NZ | 14-22 E-FF  | 12-20 G-HH | 12-18 J-JJ |
| US     | 36-44 DDD-H | 34-42 I-L  | 34-40 M-N  |
| JP     | 80-100 G-I  | 75-95 J-M  | 75-90 N-O  |

PRICE \_\_\_\_\_

CREORA®  
HIGHCLO™

CONTAINS  
*recycled*  
CONTENT



**NON WIRED MOULDED TANKINI TOP · ES801561**



- Based on ES801161 Pebble Cove Non Wired Tankini
- Bust area is lined with a light seamless foam cup to give a smooth rounded shape and prevent show through
- Upper back panel has a powernet lining to anchor the cups
- Centre front cutout with strapping detail
- Can be worn over one of our wired bikini tops, such as Plain Sailing ES7284, for the best shape and uplift for a customised fit
- Gently flared hem
- Cut from a lightweight printed fabric with a recycled nylon and Creora® highclo™
- Adjustable length shoulder straps

|        |       |
|--------|-------|
| UK     | 16-26 |
| EU     | 42-52 |
| FR     | 44-54 |
| AUS/NZ | 16-26 |
| US     | 12-22 |

PRICE \_\_\_\_\_

CREORA®  
HIGHCLO™

CONTAINS  
*recycled*  
CONTENT



**ADJUSTABLE BIKINI BRIEF · ES801573**



- Front and back are cut from a lightweight printed fabric with recycled nylon and Creora® highclo™
- Adjustable at side for a choice of coverage
- Waist height brief
- Fully lined

|        |       |
|--------|-------|
| UK     | 12-26 |
| EU     | 38-52 |
| FR     | 40-54 |
| AUS/NZ | 12-26 |
| US     | 8-22  |

PRICE \_\_\_\_\_

CREORA®  
HIGHCLO™

CONTAINS  
*recycled*  
CONTENT



**MID RISE BIKINI BRIEF · ES801572**



- High leg shape inspired by the EL4386 Charley High Leg Brief in Elomi Lingerie
- Front and back are cut from a lightweight printed fabric with recycled nylon and Creora® highclo™
- Waist height brief
- Fully lined

|        |       |
|--------|-------|
| UK     | 12-26 |
| EU     | 38-52 |
| FR     | 40-54 |
| AUS/NZ | 12-26 |
| US     | 8-22  |

PRICE \_\_\_\_\_



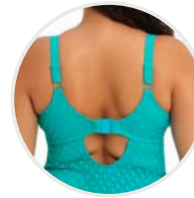
# Bazaruto

Available for AW23 in Jade, Bazaruto oozes boho shoreline charm. Available styles include the UW Plunge Bikini Top, a choice of two briefs and the bra-sized Non-Wired Swimsuit with a plunging neckline and adjustable side ruching. Continuity colours available.

**JADE (JAE)**  
Fashion/Available:

**SAPPHIRE (SAR)**  
Limited Continuity

**BLACK (BLK)**  
Continuity



Back Detail

## NON WIRED SWIMSUIT • ES800643



- Swimsuit is bra sized to ensure suitable support and shaping for a plunging neckline
- Less structured shape without moulded cups, for ease of wear and a lighter look
- Suspended shelf is set into wide underband frame for support
- Centre front cut out with strapping detail
- Clasp fastening at back with low scoop keyhole back, for ease of dressing
- Adjustable at side for a choice of coverage
- Cut from crochet fabric with full opaque liner for modesty
- Adjustable length shoulder straps

|        |            |            |            |
|--------|------------|------------|------------|
| UK     | 36-42 F/FF | 34-42 G/GG | 34-42 H/HH |
| EU     | 80-95 G/H  | 75-95 I/J  | 75-95 K/L  |
| FR     | 95-110 G/H | 90-110 I/J | 90-110 K/L |
| AUS/NZ | 14-20 F/FF | 12-20 G/GG | 12-20 H/HH |
| US     | 36-42 G/H  | 34-42 I/J  | 34-42 K/L  |
| JP     | 80-95 H/I  | 75-95 J/K  | 75-95 L/M  |

|        |            |            |            |
|--------|------------|------------|------------|
| UK     | 36-42 F/FF | 36-42 G/GG | 36-42 H/HH |
| EU     | 80-95 G/H  | 80-95 I/J  | 80-95 K/L  |
| FR     | 95-110 G/H | 95-110 I/J | 95-110 K/L |
| AUS/NZ | 14-20 F/FF | 14-20 G/GG | 14-20 H/HH |
| US     | 36-42 G/H  | 36-42 I/J  | 36-42 K/L  |
| JP     | 80-95 H/I  | 80-95 J/K  | 80-95 L/M  |

PRICE \_\_\_\_\_



## UW PLUNGE BIKINI TOP • ES800602



- Based on the Plain Sailing ES7284 UW Plunge Bikini Top
- Cut from crochet fabric with full opaque liner for modesty
- Fully lined with a light but supportive fabric for a bikini look with the fit of an Elomi Lingerie bra
- Powernet back lining for extra support
- Adjustable length shoulder straps

|        |             |            |            |
|--------|-------------|------------|------------|
| UK     | 36-44 E-FF  | 34-42 G-HH | 34-40 J-JJ |
| EU     | 80-100 F-H  | 75-95 I-L  | 75-90 M-N  |
| FR     | 95-115 F-H  | 90-110 I-L | 90-105 M-N |
| AUS/NZ | 14-22 E-FF  | 12-20 G-HH | 12-18 J-JJ |
| US     | 36-44 DDD-H | 34-42 I-L  | 34-40 M-N  |
| JP     | 80-100 G-I  | 75-95 J-M  | 75-90 N-O  |

PRICE \_\_\_\_\_



**MID RISE BIKINI BRIEF · ES800672**



- Waistline sits at natural waist level
- Higher leg for reduced coverage
- Cut from crochet fabric with full opaque liner for modesty

|        |       |
|--------|-------|
| UK     | 12-26 |
| EU     | 38-52 |
| FR     | 40-54 |
| AUS/NZ | 12-26 |
| US     | 8-22  |

|        |       |
|--------|-------|
| UK     | 14-26 |
| EU     | 40-52 |
| FR     | 42-54 |
| AUS/NZ | 14-26 |
| US     | 10-22 |

**ADJUSTABLE SKIRTED BIKINI BRIEF · ES800683**



- Skirt is cut from crochet fabric with an opaque inner brief
- Inner brief is a fuller coverage brief shape
- Waistline sits 2cm below natural waist level
- Fixed crochet fabric skirt is adjustable at sides for a choice of coverage

|        |       |
|--------|-------|
| UK     | 14-26 |
| EU     | 40-52 |
| FR     | 42-54 |
| AUS/NZ | 14-26 |
| US     | 10-22 |



**BEACH TOP · ES800696**



- Low plunge neckline is flattering for fuller busts
- Tie front for ease of wear and fit
- Short sleeves are loose fitting to suit fuller upper arms
- Side dart creates capacity for fuller busts
- Shaped to anchor under the bust and not ride up
- Wear with any Elomi bikini top or as a summer cardigan with outerwear
- Soft hemmed edges without elastic means less bulk, can be folded into a beach bag

|        |       |
|--------|-------|
| UK     | 16-26 |
| EU     | 42-52 |
| FR     | 44-54 |
| AUS/NZ | 16-26 |
| US     | 12-22 |

PRICE \_\_\_\_\_

PRICE \_\_\_\_\_

PRICE \_\_\_\_\_

# Pebble Cove

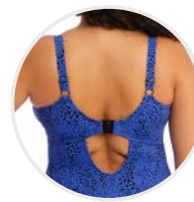
Pebble Cove makes a welcome return for AW23 with its trademark abstract spot design in Royal Blue and Black. With flirty frill details, adjustable ties and gently flared shapes, Pebble Cove proves you can have gorgeous, eye-catching swimwear without compromising on the perfect fit.



**BLUE (BLE)**  
Fashion/Available:



**BLACK (BLK)**  
Limited Continuity



Back Detail



## NON WIRED SWIMSUIT • ES801143



- Swimsuit is bra sized to ensure suitable support and shaping for a plunging neckline
- Less structured shape without moulded cups, for ease of wear and a lighter look
- Suspended shelf is set into wide underband frame for support
- Centre front cut out with strapping detail
- Clasp fastening at back with low scoop keyhole back, for ease of dressing
- Cut from a lightweight fabric with LYCRA® XTRA LIFE™
- Adjustable length shoulder straps

|        |            |            |            |
|--------|------------|------------|------------|
| UK     | 36-42 F/FF | 34-42 G/GG | 34-42 H/HH |
| EU     | 80-95 G/H  | 75-95 I/J  | 75-95 K/L  |
| FR     | 95-110 G/H | 90-110 I/J | 90-110 K/L |
| AUS/NZ | 14-20 F/FF | 12-20 G/GG | 12-20 H/HH |
| US     | 36-42 G/H  | 34-42 I/J  | 34-42 K/L  |
| JP     | 80-95 H/I  | 75-95 J/K  | 75-95 L/M  |

|        |            |            |            |
|--------|------------|------------|------------|
| UK     | 36-42 F/FF | 36-42 G/GG | 36-42 H/HH |
| EU     | 80-95 G/H  | 80-95 I/J  | 80-95 K/L  |
| FR     | 95-110 G/H | 95-110 I/J | 95-110 K/L |
| AUS/NZ | 14-20 F/FF | 14-20 G/GG | 14-20 H/HH |
| US     | 36-42 G/H  | 36-42 I/J  | 36-42 K/L  |
| JP     | 80-95 H/I  | 80-95 J/K  | 80-95 L/M  |

PRICE \_\_\_\_\_

## UW PLUNGE BIKINI TOP • ES801102



- Based on the Plain Sailing ES7284 UW Plunge Bikini Top
- Fully printed cups, straps and back are cut from a lightweight printed fabric with LYCRA® XTRA LIFE™
- Neckline has concealed elastic for ease of fit
- Fully lined with a light but supportive fabric for a bikini look with the fit of an Elomi lingerie bra
- Powernet back lining for extra support
- Adjustable length shoulder straps

|        |             |            |            |
|--------|-------------|------------|------------|
| UK     | 36-44 E-FF  | 34-42 G-HH | 34-40 J-JJ |
| EU     | 80-100 F-H  | 75-95 I-L  | 75-90 M-N  |
| FR     | 95-115 F-H  | 90-110 I-L | 90-105 M-N |
| AUS/NZ | 14-22 E-FF  | 12-20 G-HH | 12-18 J-JJ |
| US     | 36-44 DDD-H | 34-42 I-L  | 34-40 M-N  |
| JP     | 80-100 G-I  | 75-95 J-M  | 75-90 N-O  |

PRICE \_\_\_\_\_



LYCRA®  
XTRA  
LIFE™



**UW BIKINI TOP · ES801106**



- Based on Essentials ES7504 UW Plunge Bikini Top with narrow straps and a ruffle that can be worn on or off the shoulders
- Fully printed cups, straps and back are cut from a lightweight printed fabric with LYCRA® XTRA LIFE™
- Fully lined with a light but supportive fabric for a bikini look with the fit of an Elomi lingerie bra
- Powernet back lining for extra support
- Adjustable length shoulder straps

|        |           |             |            |
|--------|-----------|-------------|------------|
| UK     | 38-44 DD  | 36-44 E-FF  | 34-42 G-HH |
| EU     | 85-100 E  | 80-100 F-H  | 75-95 I-L  |
| FR     | 100-115 E | 95-115 F-H  | 90-110 I-L |
| AUS/NZ | 16-22 DD  | 14-22 E-FF  | 12-20 G-HH |
| US     | 38-44 DD  | 36-44 DDD-H | 34-42 I-L  |
| JP     | 85-100 F  | 80-100 G-I  | 75-95 J-M  |

PRICE \_\_\_\_\_

LYCRA®  
XTRA  
LIFE™



**NON WIRED MOULDED TANKINI TOP · ES801161**



- Bust area is lined with a light seamless foam cup to give a smooth rounded shape and prevent show through
- Upper back panel has a powernet lining to anchor the cups
- Centre front cutout with strapping detail
- Can be worn over one of our swim bras for a customised fit
- Gently flared shape with a handkerchief hem
- Cut from a lightweight fabric for good drape
- Adjustable length shoulder straps

|        |       |
|--------|-------|
| UK     | 16-26 |
| EU     | 42-52 |
| FR     | 44-54 |
| AUS/NZ | 16-26 |
| US     | 12-22 |

PRICE \_\_\_\_\_



**HIGH LEG BRIEF · ES801185**



- High leg shape based on the ES800672 Bazaruto Mid Rise Brief, but with the leg raised by 3cm
- Flirty frill detail at side of leg, providing additional coverage where the leg has been raised
- Front and back are cut from a lightweight printed fabric with LYCRA® XTRA LIFE™
- Waist height brief
- Fully lined

|        |       |
|--------|-------|
| UK     | 12-26 |
| EU     | 38-52 |
| FR     | 40-54 |
| AUS/NZ | 12-26 |
| US     | 8-22  |

|        |       |
|--------|-------|
| UK     | 14-26 |
| EU     | 40-52 |
| FR     | 42-54 |
| AUS/NZ | 14-26 |
| US     | 10-22 |

**ADJUSTABLE BIKINI BRIEF · ES801173**



- Front and back are cut from a lightweight printed fabric with LYCRA® XTRA LIFE™
- Adjustable at side for a choice of coverage
- Waist height brief
- Fully lined

|        |       |
|--------|-------|
| UK     | 12-26 |
| EU     | 38-52 |
| FR     | 40-54 |
| AUS/NZ | 12-26 |
| US     | 8-22  |

|        |       |
|--------|-------|
| UK     | 14-26 |
| EU     | 40-52 |
| FR     | 42-54 |
| AUS/NZ | 14-26 |
| US     | 10-22 |

PRICE \_\_\_\_\_

PRICE \_\_\_\_\_

CONTINUITY

---

SO MANY REASONS TO

*Follow the sun*



# Plain Sailing

Whether you're feeling prints or plains for your next getaway, our collection of Plain Sailing styles has got you covered. Black Daisy features a subtle slate grey leopard print on a black ground, whilst bright white daisies elevate the look for an Elomi twist on a floral design. Plain Sailing in Black features tried and trusted shapes such as the UW Plunge Bikini Top, along with flirty ruffle styling, and the Non Wired Plunge Swimsuit which features a deep plunging neckline, joined with a gold ring detail at the centre front.



**UW BIKINI TOP • ES7273**

|    |          |             |            |
|----|----------|-------------|------------|
| UK | 38-44 DD | 36-44 E-FF  | 34-42 G-HH |
| EU | 85-100 E | 80-100 F-H  | 75-95 I-L  |
| US | 38-44 DD | 36-44 DDD-H | 34-42 I-L  |



**UW PLUNGE BIKINI TOP • ES7274**

|    |             |            |            |
|----|-------------|------------|------------|
| UK | 36-44 E-FF  | 34-42 G-HH | 34-40 J-JJ |
| EU | 80-100 F-H  | 75-95 I-L  | 75-90 M-N  |
| US | 36-44 DDD-H | 34-42 I-L  | 34-40 M-N  |



**BIKINI BRIEF • ES7275**

|    |       |
|----|-------|
| UK | 14-26 |
| EU | 40-52 |
| US | 10-22 |



**NON WIRED MOULDED TANKINI TOP • ES7271**

|    |       |
|----|-------|
| UK | 16-26 |
| EU | 42-52 |
| US | 12-22 |



BLACK DAISY (BDY)  
Limited Continuity



BLACK (BLK)  
Continuity

# Print

LYCRA®  
XTRA  
LIFE™



UW BIKINI TOP • ES7283

|    |         |            |           |
|----|---------|------------|-----------|
| UK | 38-44DD | 36-44E-FF  | 34-42G-HH |
| EU | 85-100E | 80-100F-H  | 75-95I-L  |
| US | 38-44DD | 36-44DDD-H | 34-42I-L  |

LYCRA®  
XTRA  
LIFE™



UW PLUNGE BIKINI TOP • ES7284

|    |            |           |           |
|----|------------|-----------|-----------|
| UK | 36-44E-FF  | 34-42G-HH | 34-40J-JJ |
| EU | 80-100F-H  | 75-95I-L  | 75-90M-N  |
| US | 36-44DDD-H | 34-42I-L  | 34-40M-N  |

LYCRA®  
XTRA  
LIFE™



NON WIRED PLUNGE SWIMSUIT • ES7280

|    |           |           |           |
|----|-----------|-----------|-----------|
| UK | 36-42F/FF | 36-42G/GG | 36-42H/HH |
| EU | 80-95G/H  | 80-95I/J  | 80-95K/L  |
| US | 36-42G/H  | 36-42I/J  | 36-42K/L  |

LYCRA®  
XTRA  
LIFE™



HIGH LEG BRIEF • ES7288

|    |       |
|----|-------|
| UK | 14-26 |
| EU | 40-52 |
| US | 10-22 |

LYCRA®  
XTRA  
LIFE™



ADJUSTABLE BIKINI BRIEF • ES7287

|    |       |
|----|-------|
| UK | 14-26 |
| EU | 40-52 |
| US | 10-22 |

Plain

CONTINUITY

# Essentials

Feel great, always, with our staple swim collection, Essentials. Available in classic Black, both styles have been crafted using LYCRA® XTRA LIFE™ fibre so you can enjoy long-lasting comfort, fit and shape.



**UW PLUNGE BIKINI TOP • ES7504**

|    |          |             |            |         |          |
|----|----------|-------------|------------|---------|----------|
| UK | 42-44 DD | 36-44 E-FF  | 34-42 G-HH | 34-40 J | 34-38 JJ |
| EU | 95-100 E | 80-100 F-H  | 75-95 I-L  | 75-90 M | 75-85 N  |
| US | 42-44 DD | 36-44 DDD-H | 34-42 I-L  | 34-40 M | 34-38 N  |



**HIGH WAIST BRIEF • ES7604**

|    |       |
|----|-------|
| UK | 16-26 |
| EU | 42-52 |
| US | 12-22 |



# Magnetic

Poolside chic is yours with our much-loved Magnetic collection. The wrap front styling of Magnetic's UW Plunge Bikini Top is so flattering for all bust shapes and sizes, while the matching twist front on the Full Brief makes for the perfect pairing. Available in Sapphire and Black.



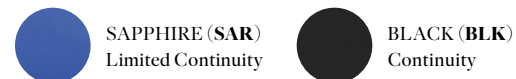
**UW PLUNGE BIKINI TOP • ES7193**

|  |    |             |            |            |  |    |             |
|--|----|-------------|------------|------------|--|----|-------------|
|  | UK | 36-44 E-FF  | 34-42 G-HH | 34-40 J-JJ |  | UK | 34-46 DD-JJ |
|  | EU | 80-100 F-H  | 75-95 I-L  | 75-90 M-N  |  | EU | 75-105 E-N  |
|  | US | 36-44 DDD-H | 34-42 I-L  | 34-40 M-N  |  | US | 34-46 DD-N  |



**FULL BIKINI BRIEF • ES7196**

|  |    |       |  |
|--|----|-------|--|
|  | UK | 14-26 |  |
|  | EU | 40-52 |  |
|  | US | 10-22 |  |





# Our POS

Point of sale pieces are a great way to bring attention to new collections in your store.

This season, to support you, our retail partners, we'll be sending out a selection of showcards and banners as pictured below. All POS items will be sent out automatically, collection at a time, and will arrive with the product ordered on the month of launch.

In order to receive any of our seasonal POS items you must order 5+ units of the key style as per the picture and style code below.

For example, the Pebble Cove Showcard features ES801106 and matching co-ordinate ES801185 but the key style piece is the ES801106 Bikini Top which would require a minimum order of 5 pieces to receive the POS.

## SHOWCARD

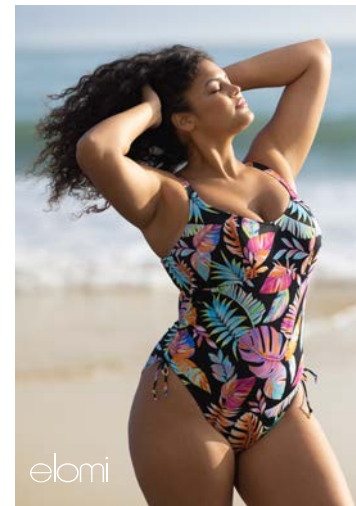


Pebble Cove (BLE)  
ES801106



Bazaruto (JAE)  
ES800602

## BANNER



Tropical Falls (BLK)  
ES801543

## SIZES WITHOUT SURPRISES

Missing sizes without surprises?

Rest assured, our handy conversion charts, designed to help you find the right bra and brief size wherever you may be in the world, haven't disappeared. Simply scan the QR code below to digitally access Elomi Swim's international size guide.



Please note: Banner Size: 700mm x 495mm. Showcard size: 420mm x 297mm. POS is subject to change.

**UK, IRELAND AND REST OF THE WORLD**

Wacoal EMEA Ltd. The Corsetry Factory, Rothwell Road,  
Desborough, Northamptonshire, NN14 2PG, UK  
Tel: +44 (0) 1536 760282 Fax: +44 (0) 1536 762149  
Email: orders@wacoal-europe.com

**WACOAL EUROPE SAS (PARIS)**

81 rue Saint-Lazare, 75009 Paris, France  
Tel: +33 (0) 1 42 81 04 93

**WACOAL EUROPE SAS (LYON)**

4, Allee Du Moulin Berger 69130 Ecully, Lyon, France  
Tel: +33 (0) 4 37 59 80 37 Fax: +33 (0) 4 78 35 34 83

**EVEDEN INC.**

136 Madison Avenue, Floor 9, New York, NY 10016, USA  
US Showroom Tel: (212) 696-4763 Fax: (800) 708-8933  
USA Customer Service Toll Free: (800) 467-1269 Fax: (866) 533-1385  
Email: usaorders@eveden.com

**EVEDEN CANADA**

Accounts Office: 136 Madison Avenue, Floor 9, New York, NY 10016, USA  
US Showroom Tel: (212) 696-4763 Fax: (800) 708-8933  
Canada Customer Service Toll Free: (800) 467-1269 Fax: (866) 533-1385  
Email: ca.orders@eveden.com

**CARIBBEAN AND LATIN AMERICA**

Accounts Office: 136 Madison Avenue, Floor 9, New York, NY 10016, USA  
US Showroom Tel: (212) 696-4763 Fax: (800) 708-8933  
USA Customer Service Toll Free: (800) 467-1269 Fax: (866) 533-1385  
Email: usaorders@eveden.com

**WACOAL AUSTRALIA PTY LTD.**

249 Brunswick Road, Brunswick, Victoria 3056  
Tel: +61 3 9326 0318  
Email: australia.enquiries@wacoal-europe.com /  
australian.orders@wacoal-europe.com

**NEW ZEALAND**

Rich Pickings: Kathleen Ritchie  
Tel/Fax: 0064 9 411 9174  
Email: mail@richpickings.co.nz

