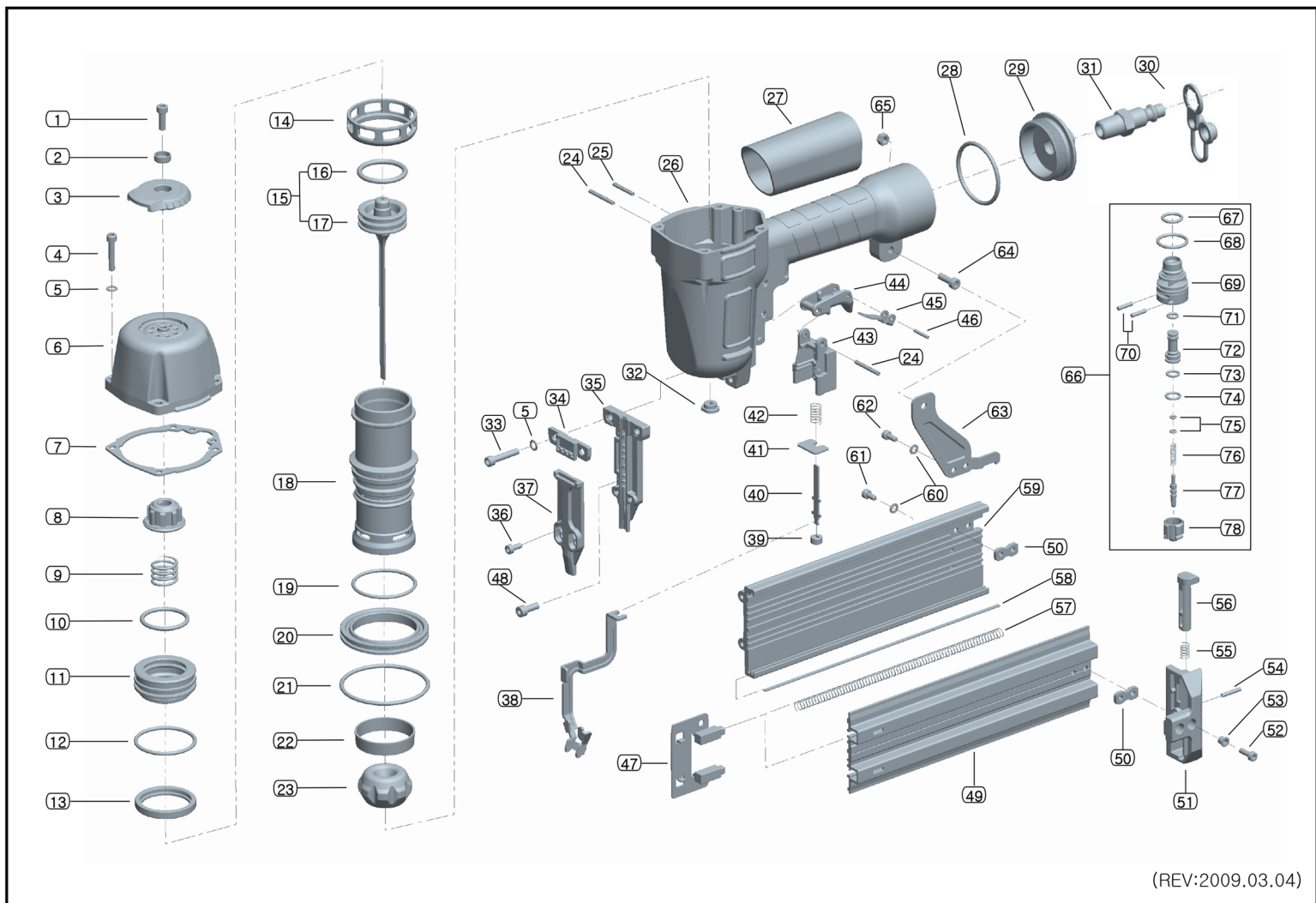


# EXPLODED DIAGRAM OF T64R



(REV:2009.03.04)

## T64R (16GA. 2-1/2" FINISH NAILER)

NO.	DESCRIPTION	PART NO.	QTY	NO.	DESCRIPTION	PART NO.	QTY	NO.	DESCRIPTION	PART NO.	QTY
1	BOLT (M5x12L)	Z-05-120	1	30	PLUG CAP	9032-B-006	1	59	MAGAZINE A	T64-M-101	1
2	EXHAUST Cover WASHER	T64-C-004	1	31	AIR PLUG	9032-B-005	1	60	SPRING WASHER (for M4)	W-04	4
3	EXHAUST COVER	T64-C-003	1	32	NOZZLE	T64-B-007	1	61	BOLT (M4x8L)	Z-04-080	2
4	BOLT (M5x25L)	Z-05-250	4	33	BOLT (M5x30L)	ZN-05-300	2	62	BOLT (M4x8L)	ZN-04-080	2
5	SPRING WASHER (for M5)	W-05	6	34	GUIDE COVER A	T64-G-002	1	63	BRACKET	T64-M-006	1
6	CAP	T64-C-001	1	35	DRIVER GUIDE	T64-G-101	1	64	BOLT (M5x14L)	Z-05-140	1
7	GASKET	T64-C-002	1	36	BOLT (M4x9L)	ZN-04-090	2	65	LOCK NUT (for M5)	NN-05	1
8	PISTON STOPPER	T64-H-005	1	37	GUIDE COVER B	T64-G-103	1	66	VALVE SET	NV-V-P001	1
9	HEAD VALVE SPRING	T64-H-006	1	38	CONTACT ARM	T64-S-101	1	67	VALVE O-RING	NV-V-001	1
10	HEAD VALVE O-RING (IN)	T64-H-003	1	39	RETAINER	T64-S-006	1	68	PLUNGER CAP O-RING	CT64-V-011	1
11	HEAD VALVE	T64-H-001	1	40	CONNECTOR	T64-S-002	1	69	VALVE	NV-V-003	1
12	HEAD VALVE O-RING (OUT)	T64-H-004	1	41	CONNECTOR HOLDER	T64-S-005	1	70	PIN (φ3x14.2L)	NV-V-013	2
13	HEAD VALVE SEAL	T64-H-002	1	42	CONNECTOR SPRING	T64-S-004	1	71	VALVE PLUNGER O-RING (UP)	NV-V-004	1
14	COLLAR	T64-A-004	1	43	CONNECTOR HOUSING	T64-S-003	1	72	VALVE PLUNGER	NV-V-007	1
15	PISTON SET	T64-P-P001	1	44	TRIGGER A (OUT)	JN45R-T-001	1	73	VALVE PLUNGER O-RING (MID)	CT64-V-005	1
16	PISTON O-RING	1651-P-003	1	45	TRIGGER B (IN)	JN45R-T-002	1	74	VALVE PLUNGER O-RING (LOW)	NV-V-006	1
17	PISTON ASSEMBLY	T64-P-P002	1	46	ROLL PIN (φ2.5x16L)	R-25-160	1	75	PLUNGER O-RING	CT64-V-008	2
18	CYLINDER	T64-A-001	1	47	PUSHER	1665-M-003	1	76	PLUNGER SPRING	CT64-V-009	1
19	CYLINDER O-RING	1665-A-005	1	48	BOLT (M5x20L)	ZN-05-200	2	77	PLUNGER	NV-V-010	1
20	CYLINDER GUIDE	T64-A-002	1	49	MAGAZINE B	T64-M-002	1	78	PLUNGER CAP	NV-V-012	1
21	CYLINDER GUIDE O-RING	JPS38R-A-006	1	50	TWIN NUT	1850-M-012	2				
22	SUPPLY HOLE SEAL	1651-A-007	1	51	MAGAZINE END CAP	CT64-L-001	1				
23	BUMPER	T64-A-003	1	52	BOLT (M4x12L)	ZN-04-120	2				
24	ROLL PIN (φ3x28L)	R-30-280	2	53	BUSHING	CT64-L-007	2				
25	ROLL PIN (φ3x22L)	R-30-220	1	54	ROLL PIN (φ3x18L)	R-30-180	1				
26	BODY	T64-B-001	1	55	CLICK LEVER SPRING	CT64-L-004	1				
27	GRIP	JN2190-B-004	1	56	CLICK LEVER	CT64-L-002	1				
28	END CAP O-RING	JNS45-B-003	1	57	PUSHER SPRING	CT64-M-004	2				
29	END CAP	JNS45-B-002	1	58	STEEL PLATE	T64-M-005	1				

\*\* All the parts of nailer can be changed for improvement and re-design without announcement.

(REV. : 2009/03/04)