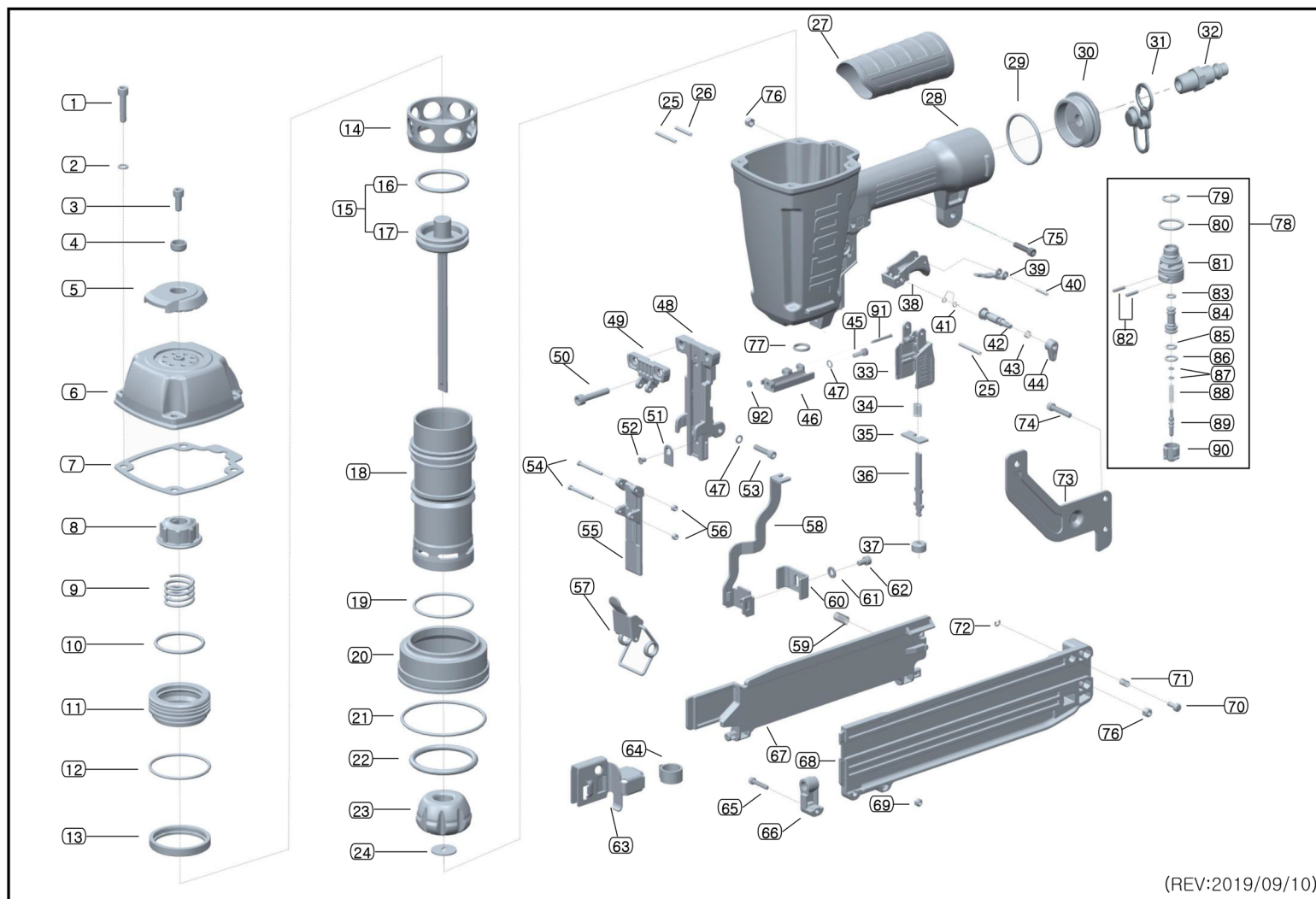


EXPLODED DIAGRAM OF JQS65



(REV:2019/09/10)

JQS65(15GA. 7/16" CROWN STAPLER)

NO.	DESCRIPTION	PART NO.	QTY	NO.	DESCRIPTION	PART NO.	QTY	NO.	DESCRIPTION	PART NO.	QTY
1	BOLT (M6x28L)	Z-06-280	4	32	AIR PLUG	9032-B-005	1	63	PUSHER	JNS45-M-004	1
2	SPRING WASHER (for M6)	W-06	4	33	CONNECTOR HOUSING	CT64-S-103	1	64	PUSHER SPRING	JNS45-M-008	1
3	BOLT (M6x15L)	ZN-06-150	1	34	CONNECTOR SPRING	CT64-S-004	1	65	BOLT (M4x20L)	Z-04-200	1
4	EXHAUST COVER WASHER	CT64-C-007	1	35	CONNECTOR HOLDER	CT64-S-005	1	66	MAGAZINE HINGE	JNS45-M-003	1
5	EXHAUST COVER	CT64-C-003	1	36	CONNECTOR	CT64-S-002	1	67	MAGAZINE COVER	JQS65-M-002	1
6	CAP	JQS65-C-001	1	37	RETAINER	CT64-S-006	1	68	MAGAZINE BODY	JQS65-M-001	1
7	GASKET	CT64R3-C-102	1	38	TRIGGER A (OUT)	CT64-T-001	1	69	LOCK NUT (for M4)	NN-04	1
8	PISTON STOPPER	CT64-H-005	1	39	TRIGGER B (IN)	ST64-T-002	1	70	PUSHER STOPPER	JNS45-M-006	1
9	HEAD VALVE SPRING	CT64-H-006	1	40	ROLL PIN (Φ2.5x16L)	R-25-160	1	71	STOPPER SPRING	JNS45-M-009	1
10	HEAD VALVE O-RING (IN)	CT64-H-003	1	41	TRIGGER SPRING	CT64-T-008	1	72	E-RING (Φ3)	E-030	1
11	HEAD VALVE	CT64-H-001	1	42	FINGER TIP SWITCH BAR	ST64-T-003	1	73	BRACKET	JQS65-M-006	1
12	HEAD VALVE O-RING (OUT)	CT64-H-004	1	43	FINGER TIP SWITCH SPRING	CT64-T-005	1	74	BOLT (M5x25L)	Z-05-250	2
13	HEAD VALVE SEAL	CT64-H-002	1	44	FINGER TIP SWITCH CAP	CT64-T-004	1	75	BOLT (M5x20L)	Z-05-200	1
14	COLLAR	CT64-A-004	1	45	SUS BOLT (M5x12L)	ZN-05-120	1	76	LOCK NUT (for M5)	NN-05	3
15	PISTON SET	JQS65-P-P001	1	46	STAPLE GUIDE	JQS65-G-008	1	77	NOZZLE	JQS65-B-007	1
16	PISTON O-RING	JQS65-P-003	1	47	SPRING WASHER (for M5)	W-05	2	78	VALVE SET	NV-V-P001	1
17	PISTON ASSEMBLY	JQS65-P-P002	1	48	DRIVER GUIDE	JQS65-G-001	1	79	VALVE O-RING	NV-V-001	1
18	CYLINDER	JQS65-A-001	1	49	GUIDE COVER A	JQS65-G-002	1	80	PLUNGER CAP O-RING	CT64-V-011	1
19	CYLINDER O-RING	CT64-A-005	1	50	BOLT (M6x32L)	ZN-06-320	2	81	VALVE	NV-V-003	1
20	CYLINDER GUIDE	JQS65-A-002	1	51	DRIVER GUIDE TIP	JQS65-G-009	1	82	VALVE PIN (Φ3x14.2L)	NV-V-013	2
21	CYLINDER GUIDE O-RING	CT64-A-006	1	52	D/H BOLT	JQS65-G-010	1	83	VALVE PLUNGER O-RING (UP)	NV-V-004	1
22	SUPPLY HOLE SEAL	S950/16-A-007	1	53	BOLT (M5x22L)	ZN-05-220	1	84	VALVE PLUNGER	NV-V-007	1
23	BUMPER	CT64-A-003	1	54	GUIDE COVER BOLT	JPS38R-G-016	2	85	VALVE PLUNGER O-RING (MID)	CT64-V-005	1
24	DRIVER GUIDE PLATE	JQS65-A-008	1	55	GUIDE COVER B	JQS65-G-003	1	86	VALVE PLUNGER O-RING (LOW)	NV-V-006	1
25	ROLL PIN (Φ3x28L)	R-30-280	2	56	LOCK NUT (for M3)	NN-03	2	87	PLUNGER O-RING	CT64-V-008	2
26	ROLL PIN (Φ3x22L)	R-30-220	1	57	LATCH SET	JQS65-G-P001	1	88	PLUNGER SPRING	CT64-V-009	1
27	GRIP	CT64R3-B-004	1	58	CONTACT ARM	JQS65-S-001	1	89	PLUNGER	NV-V-010	1
28	BODY	JQS65-B-001	1	59	MAGAZINE SPRING	JNS45-M-008	1	90	PLUNGER CAP	NV-V-012	1
29	END CAP O-RING	JNS45-B-003	1	60	CONTACT FOOT	JQS65-S-002	1	91	STAPLE GUIDE PIN	JQS65-G-012	1
30	END CAP	JNS45-B-002	1	61	RING PLATE	JN65S-M-017	1	92	PIN STOPPER O-RING	CT64-M-008	1
31	PLUG CAP	9032-B-006	1	62	BOLT (M5x8L)	ZN-05-080	1				

** All the parts of nailer can be changed for improvement and re-design without announcement.

(REV. : 2019/09/10)