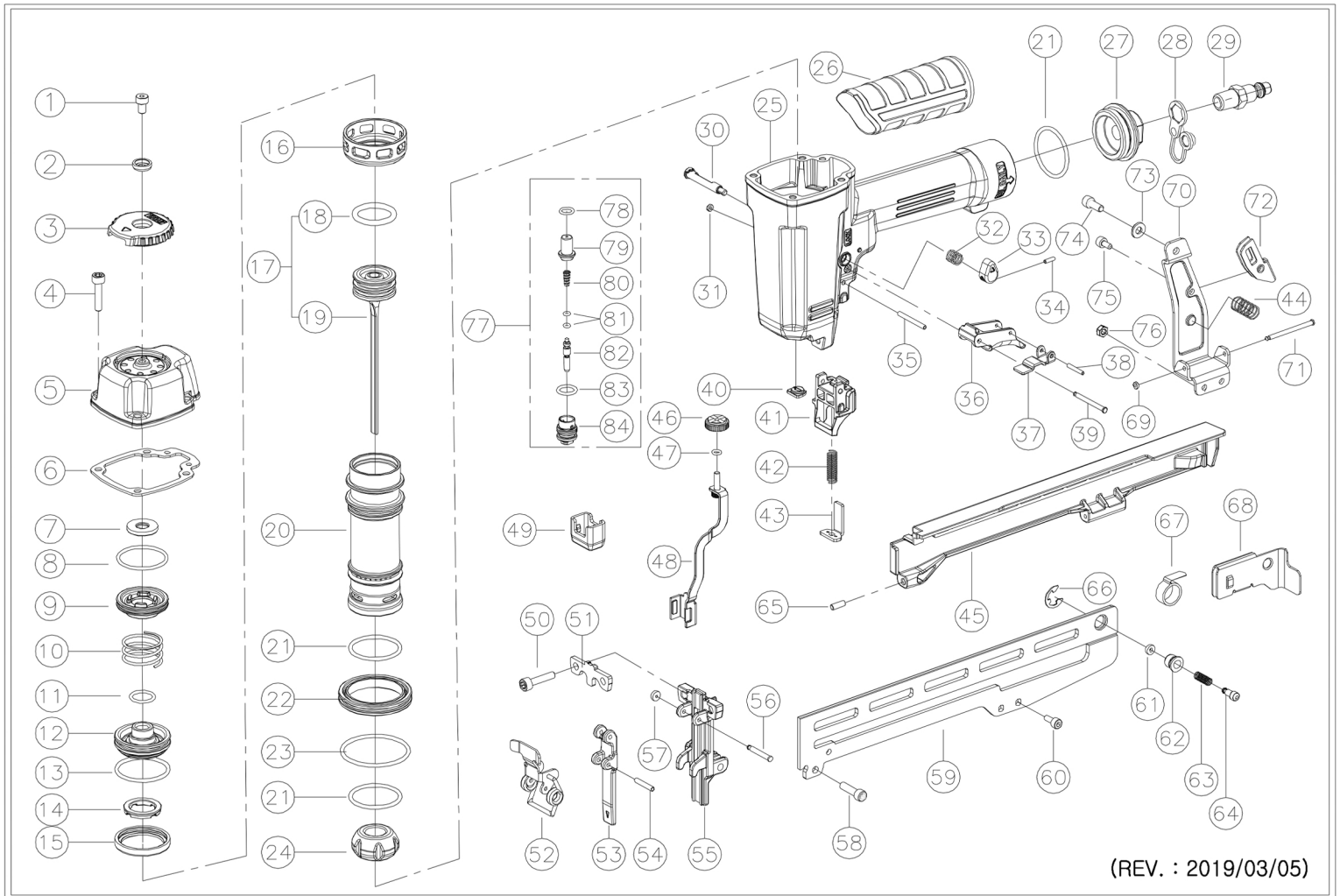


EXPLODED DIAGRAM OF JLS38N



(REV. : 2019/03/05)

438MA (18GA. 1/4" NARROW CROWN STAPLER)

NO.	DESCRIPTION	PART NO.	QTY	NO.	DESCRIPTION	PART NO.	QTY	NO.	DESCRIPTION	PART NO.	QTY
1	BOLT(M5x8L)	ZN-05-080	1	31	ROLL PIN	R-30-280	2	61	BOLT(M4x12L)	Z-04-120	2
2	EXHAUST COVER WASHER	JLS38N-C-007	1	32	SAFETY BAR	JLS38N-T-003	1	62	STOPPER SEAL	951-M-008	1
3	EXHAUST COVER	JLS38N-C-003	1	33	RETAINER	CT64-M-008	1	63	STOPPER GUIDE	JLS38N-M-009	1
4	BOLT(M5x22L)	Z-05-220	4	34	LOCK SWITCH SPRING	JLS38N-T-005	1	64	PUSHER STOPPER SPRING	951-M-011	1
5	CAP	JLS38N-C-001	1	35	SAFETY BAR CAP	JLS38N-T-004	1	65	PUSHER STOPPER	S950/16-M-010	1
6	GASKET	JLS38N-C-002	1	36	ROLL PIN	R-25-080	1	66	MAGAZINE PIN	JLS38N-M-011	1
7	STOPPER SEAL	JLS38N-H-007	1	37	TRIGGER A (Short type)	JLS38N-T-001	1	67	E-RING	E-080	1
8	HEAD VALVE B O-RING	1850-A-005	1	38	TRIGGER B	JN65S-T-002	1	68	PUSHER SPRING	9032-M-004	1
9	HEAD VALVE B	JLS38N-H-002	1	39	ROLL PIN	R-25-160	1	69	PUSHER	JLS38N-M-003	1
10	HEAD VALVE SPRING	JLS38N-H-006	1	40	TRIGGER PIN	JS440K-T-008	1	70	PIN STOPPER O-RING	JPS38R-M-004	1
11	HEAD VALVE A O-RING (IN)	JLS38N-H-003	1	41	NOZZLE	JLS38N-B-007	1	71	BRACKET	JLS38N-M-006	1
12	HEAD VALVE A	JLS38N-H-001	1	42	CONNECTOR HOUSING	JLS38N-S-003	1	72	MAGAZINE COVER PIN	TRS25S-G-006	1
13	HEAD VALVE A O-RING (OUT)	JLS38N-H-004	1	43	CONNECTOR SPRING	JLS38N-S-004	1	73	SUB. PUSHER	JLS38N-M-015	1
14	PISTON STOPPER SEAL	JLS38N-H-009	1	44	CONNECTOR	JLS38N-S-002	1	74	RING PLATE	JN65S-M-017	1
15	HEAD VALVE SEAL	JLS38N-H-005	1	45	MAGAZINE COVER SPRING	1013-T-006	1	75	BOLT(M5x14L)	Z-05-140	1
16	COLLAR	JLS38N-A-004	1	46	MAGAZINE COVER	JLS38N-M-002	1	76	BOLT(M4x6L)	Z-04-060	1
17	PISTON SET	JLS38N-P-P001	1	47	DEPTH DIAL	CS15/50-S-010	1	77	LOCK NUT(for M4)	N-04	2
18	PISTON O-RING	JLS38N-P-003	1	48	STOPPER O-RING	JN45R-B-009	1	78	VALVE SET	NV-V-P001	1
19	PISTON ASSEMBLY	JLS38N-P-P002	1	49	CONTACT ARM	JLS38N-S-001	1	79	VALVE O-RING	NV-V-001	1
20	CYLINDER	JLS38N-A-001	1	50	NO MAR PAD	JLS38N-S-011	1	80	PLUNGER CAP O-RING	CT64-V-011	1
21	CYLINDER O-RING	422-H-004	3	51	BOLT(M5x22L)	ZN-05-220	2	81	VALVE	NV-V-003	1
22	CYLINDER GUIDE	JLS38N-A-002	1	52	GUIDE COVER A	JLS38N-G-002	1	82	VALVE PIN (φ3x14.2L)	NV-V-013	2
23	CYLINDER GUIDE O-RING	JS440K-H-104	1	53	GUIDE COVER LATCH SET	JLS38N-G-004	1	83	VALVE PLUNGER O-RING (UP)	NV-V-004	1
24	BUMPER	JLS38N-A-003	1	54	GUIDE COVER B	JLS38N-G-003	1	84	VALVE PLUNGER	NV-V-007	1
25	BODY	JLS38N-B-001	1	55	ROLL PIN	R-30-180	1	85	VALVE PLUNGER O-RING (MID)	CT64-V-005	1
26	GRIP	1850A-B-104	1	56	DRIVER GUIDE	JLS38N-G-001	1	86	VALVE PLUNGER O-RING (LOW)	NV-V-006	1
27	END CAP	630-B-002	1	57	GUIDE COVER PIN	CS26/38-G-021	1	87	PLUNGER O-RING	CT64-V-008	2
28	PLUG CAP	CT64-B-006	1	58	PIN RETAINER	JN100C-G-022	1	88	PLUNGER SPRING	CT64-V-009	1
29	AIR PLUG	CT64-B-005	1	59	BOLT(M5x16L)	ZN-05-160	1	89	PLUNGER	NV-V-010	1
30	ROLL PIN	R-30-220	1	60	MAGAZINE	JLS38N-M-001	1	90	PLUNGER CAP	NV-V-012	1

** All the parts of nailer can be changed for improvement and re-design without announcement.

(REV. : 2019/08/23)