

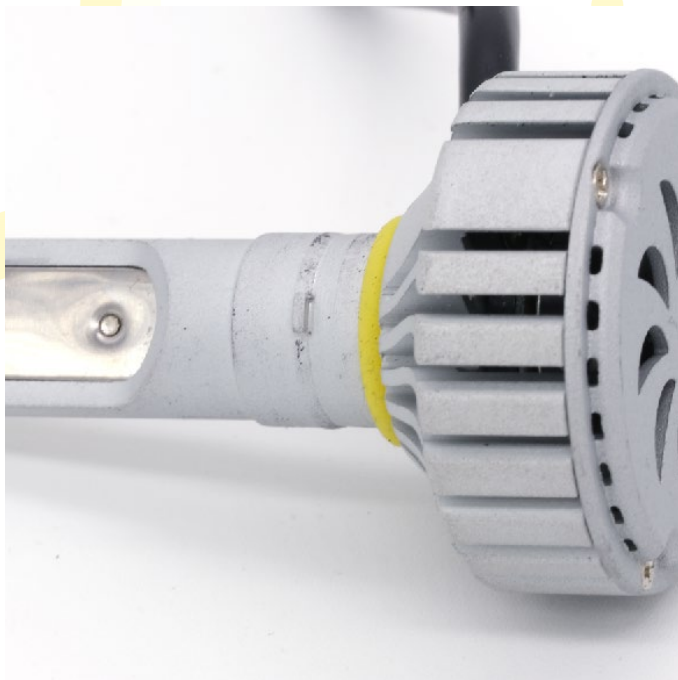
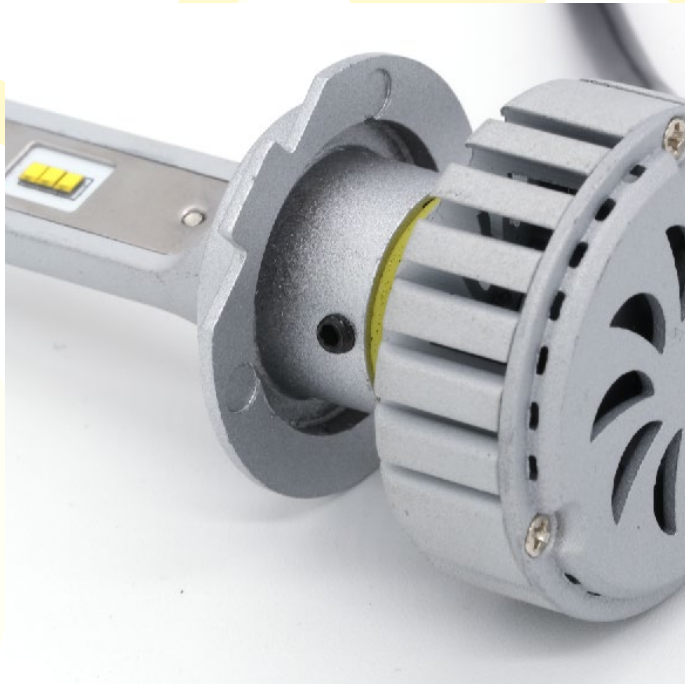


## Hyundai Veloster Low/Hi Beam install Guide

Removal of headlight is recommended for easier access to rear of headlight, but not necessary.  
Professional installation recommended.

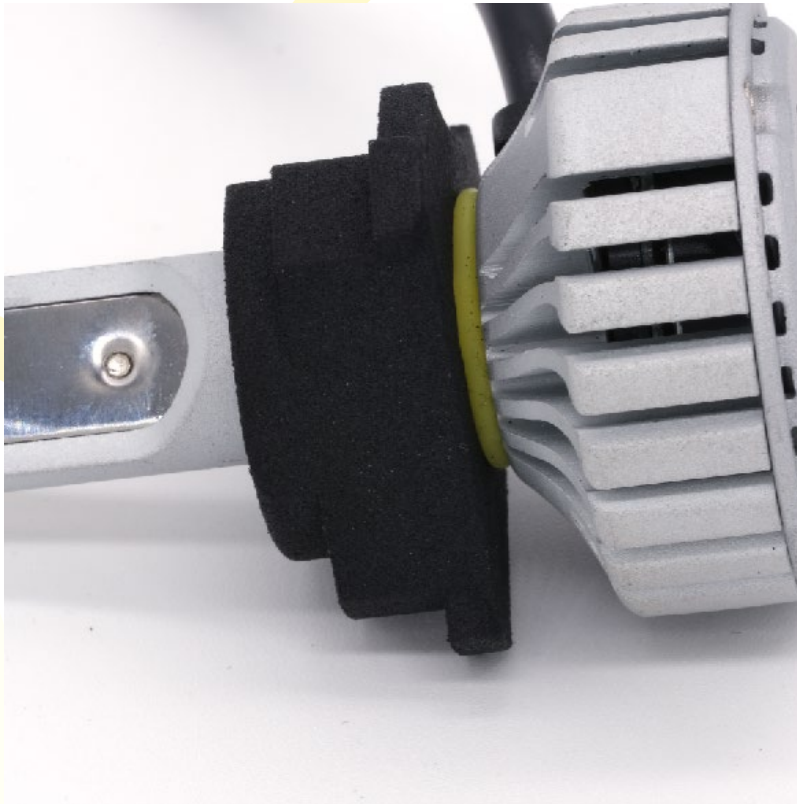
### Step 1:

-Using the provided allen key, loosen grub screw and remove H7 socket base.



**Step 2:**

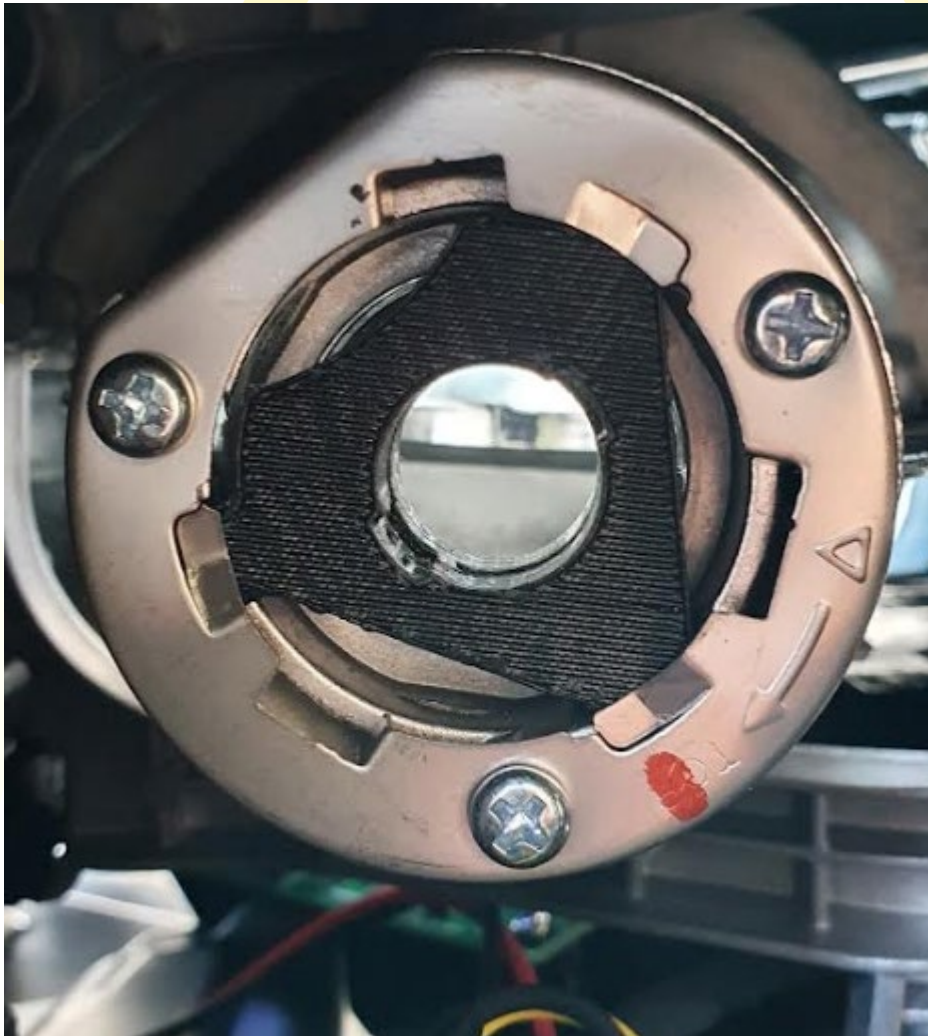
-Insert the provided Spectr H7 adapter and push down until it clicks or touches o-ring.



### Step 3

-Insert LED bulb and adapter into headlight. Orientation of 3 prongs should match the original bulb holder. Note\* Prong opposite of rounded cut-out is slightly wider than the other two.

Picture below demonstrates how the adapter should sit. The LED bulb should be used to assist with twisting the adapter into place.



### Step 4

-Reverse twist the LED in the socket slightly such that the cable is facing downwards. This will ensure the LED's are facing in the 90 and 270degree direction

