

velnue
☺

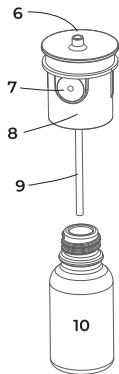
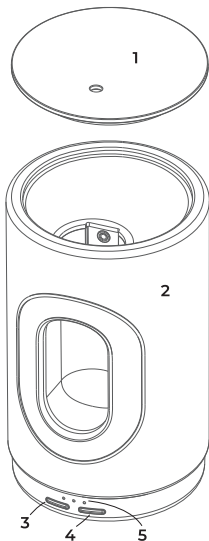


COVE
WATERLESS DIFFUSER

USER MANUAL

DIAGRAM of PARTS

1. Metal lid
2. Ceramic body
3. Duration button
4. Strength button
5. 3 indicator lights
6. Nozzle outlet
7. Nozzle inlet
8. Nozzle body
9. Suction straw
10. Essential oil bottle
11. Charging cable
12. Pipette cap



11

12

SPECIFICATIONS

| | |
|---------------------------------|---|
| Product Name | Cove Diffuser v1.0 |
| Dimensions | 9.0 x 9.0 x 15.4cm (3.5 x 3.5 x 6.1") |
| Weight | 730g (1.6 lbs) |
| Voltage | USB 5V |
| Rechargeable Battery | 2,200 mAh (lithium-ion) |
| Charging Time* | 3-4 hours via USB-C cable |
| Battery Runtime* (light off) | 50 hours on Low Strength 35 hours on Med Strength 20 hours on High Strength |
| Consumption* | 0.04 ml/hr on Low 0.06 ml/hr on Med 0.12 ml/hr on High |
| Coverage* | 1,000 ft ² (93m ²) |
| Noise Level* | <39 dB |
| Bottle Compatibility | 10ml & 15ml essential oil bottles |

**Based on internal testing. Actual results may vary.*

CHARGING THE DIFFUSER

Please charge the diffuser before its first use.

Use the USB-C cord along with a USB-A wall adapter (not provided, but you probably have one around your home or office).

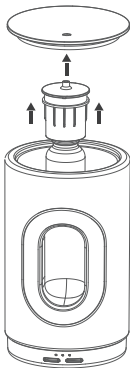
When charging, the indicator light will slowly flash white. Once fully charged, the light will remain white with no flashing. It takes 3-4hrs to fully charge.



USB-A WALL ADAPTER EXAMPLE
(not included)

PREPPING FOR DIFFUSING

1. Lift off the metal lid, then pull out the nozzle and bottle from the diffuser.
2. Twist off the empty essential oil bottle from the nozzle, then add essential oils to the bottle. Alternatively, you can use any other 10ml or 15ml essential oil bottle. When screwing the bottle back into the nozzle, make sure it's snug, **but do not overtighten**.
3. Return nozzle, bottle and lid. The diffuser is now ready to operate.



Step 1



Step 2



Step 3

OPERATING THE DIFFUSER

TURNING DIFFUSER ON/OFF

Press the STRENGTH button to turn on the diffuser. By default, the Ambient Light will come on and diffuser will be on LOW Strength (one indicator light). To turn off the diffuser, cycle through the STRENGTH options until the diffuser turns off.

ADJUST STRENGTH

Press the STRENGTH button to cycle through the options:

- LOW (10s mist / 60s rest) = 1 indicator light on
- MED (10s mist / 40s rest) = 2 indicator lights on
- HIGH (10s mist / 20s rest) = 3 indicator lights on

ADJUST DURATION

By default, when the diffuser is turned on it will run for 4 hours. You can adjust the duration by pressing the DURATION button.

- 2 HR Duration = 1 indicator light will flash
- 4 HR Duration = 2 indicator lights will flash
- 8 HR Duration = 3 indicator lights will flash

TURNING AMBIENT LIGHT ON / OFF

At any time, whether the diffuser is running or not, you can turn the Ambient Light on and off by long-pressing the STRENGTH button.

CLEANING THE DIFFUSER

To clean the exterior of the device, simply wipe with a damp cloth. Avoid harsh chemicals. To clean the interior, fill essential oil bottle with rubbing alcohol and run the device for 3 hour on HIGH STRENGTH in a well-ventilated area. Wipe clean the nozzle inlet and outlet from time to time. We suggest cleaning once per month.

CAUTIONS

1. Keep the diffuser upright. Do not tilt or invert.
2. Do not operate the diffuser:
 - a. if it is damaged, broken, or making irregular noises.
 - b. if the cord is damaged or broken.
 - c. within 10cm of walls, furniture and clothes.
 - d. on an uneven surface.
3. Keep out of reach of children and pets.
4. Do not disassemble the diffuser.
5. We suggest using only VeInue essential oils as other "essential oils" often contain synthetics, fillers, and other foreign ingredients that may damage the diffuser. Avoid thick essential oils.
6. Do not inhale from directly over the diffuser, as the scent produced is very strong in close proximity.
7. Do not leave the diffuser plugged in when it is fully charged.

FREQUENTLY ASKED QUESTIONS

What are the benefits of a waterless diffuser?

To start, convenience. You don't need to constantly refill the diffuser with water. More importantly, compared to water-based ultrasonic diffusers, waterless diffusers atomize the oil's individual compounds more evenly, resulting in a purer and more consistent aroma over time.

Will I use more or less oil with waterless diffusing?

To achieve the same strength of aroma in your space - whether using an ultrasonic diffuser or a waterless diffuser - you will use the same amount of essential oils. The main difference is waterless diffusing will diffuse the individual compounds more consistently.

It's louder than ultrasonic diffusers. Is that normal?

Yes, this is completely normal. Waterless diffusers use the venturi effect to atomize the essential oils, which is a bit louder than traditional ultrasonic disc technology.

Can I use another brand's essential oils?

You may, but please use caution when using other brands as many of them dilute their oils with synthetics that can damage the diffuser.

Does the diffuser work while plugged in?

Yes, it does, but with 2 side effects: the battery will recharge much slower and the battery will degrade quicker.

TROUBLESHOOTING

The diffuser won't turn on.

The battery may need to be recharged.

The scent is very weak or non-existent.

First, make sure the bottle isn't empty. Next, make sure the nozzle is inserted all the way down into the diffuser. If that is not the issue, please note that some essential oils have a weaker smell, so you may need to increase the STRENGTH mode. If there is still no scent, try cleaning the interior of the diffuser according to the instructions in this manual.

There's no visible mist.

Nor should there be. The stream of microscopic atomized essential oil particles are nearly invisible to the naked eye. With the right lighting, you can see the stream. Also, the diffuser only diffuses 10 seconds at a time, then rests. You'll only be able to see the barely-detectable stream during that 10 second period.

If none of these troubleshooting tips help solve your problem, please email us at smile@velnue.com



**We also make
100% Certified Organic Essential Oil blends.**

ORDER ONLINE:

CANADA

velnue.ca
amazon.ca/velnue

USA

velnue.com
amazon.com/velnue

Distributed and imported by /
Distribué et importé par:

Velnue Design Corp.
Abbotsford, BC Canada V3G 2L6
velnue.com