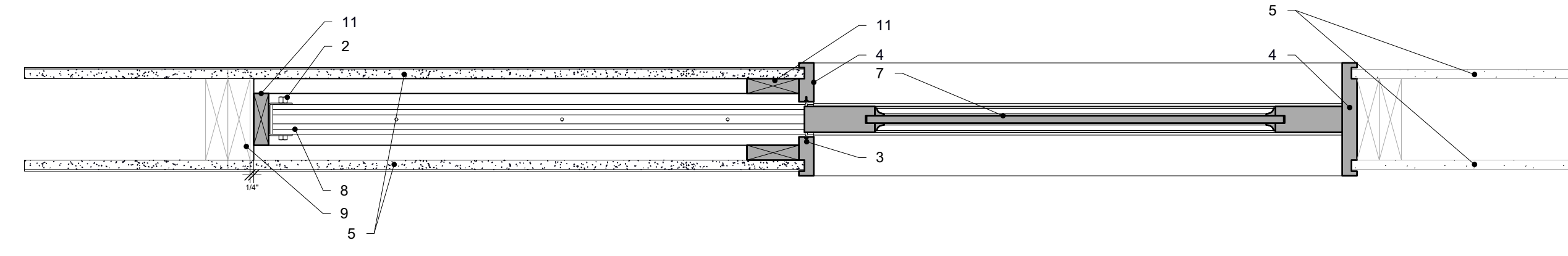
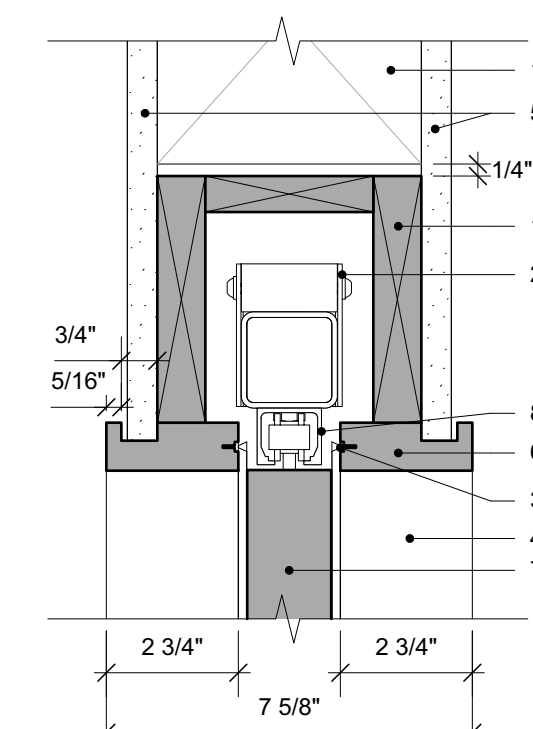


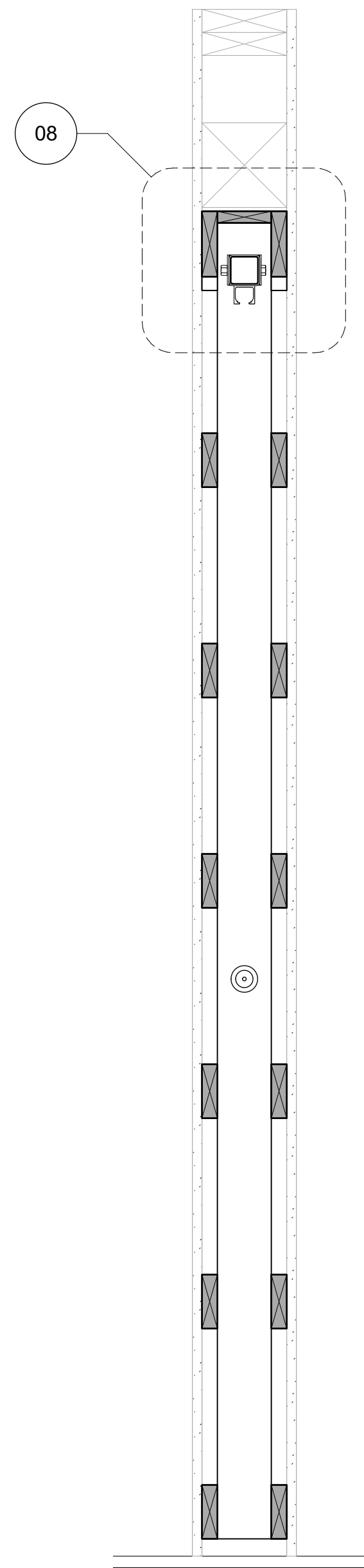
Enlarged Section 08
3" = 1'-0"



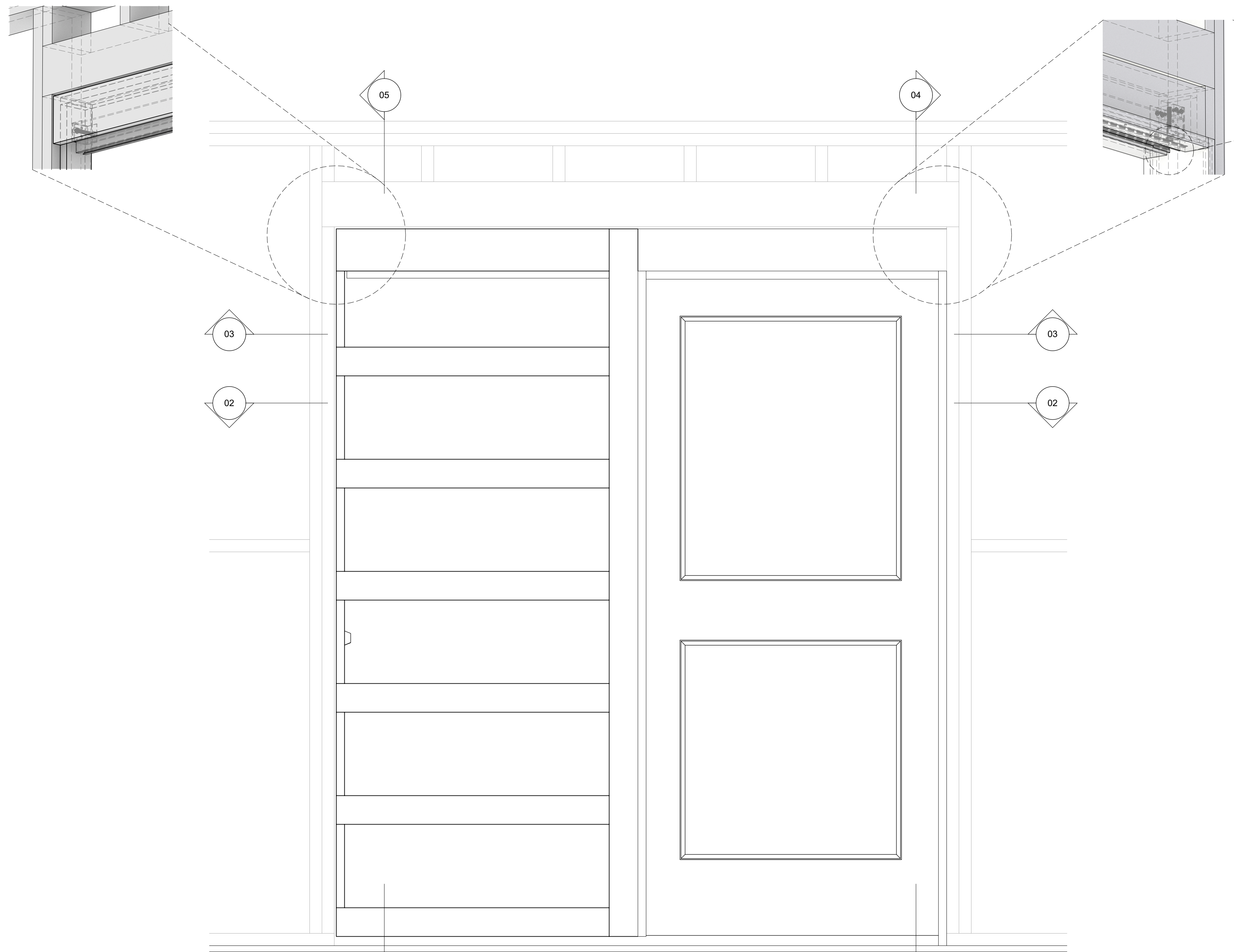
Pocket Door Assembly - Horizontal Section (Up) 03
1 1/2" = 1'-0"



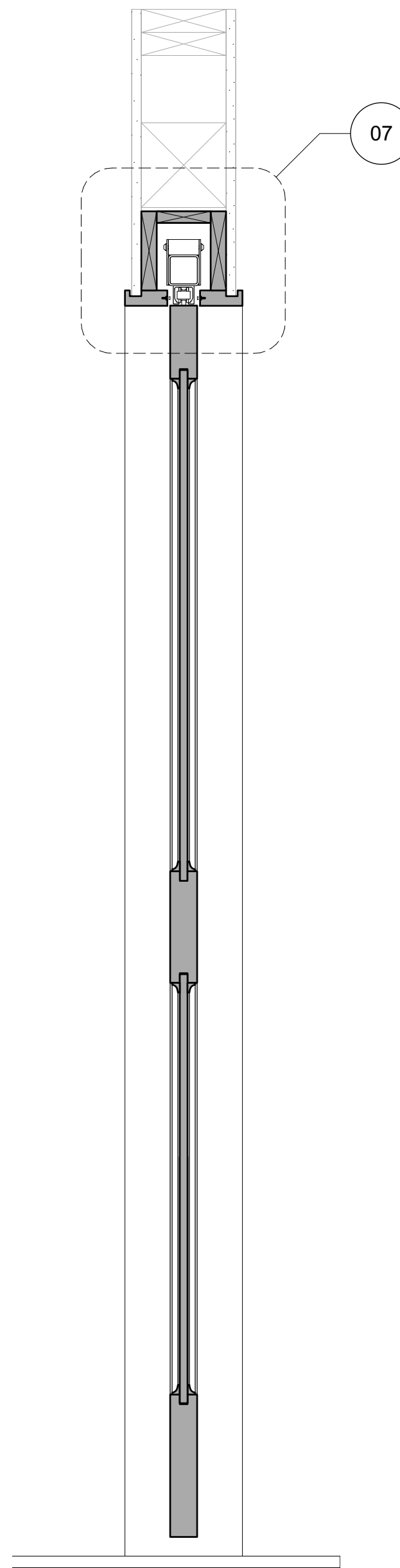
Enlarged Section 07
3" = 1'-0"



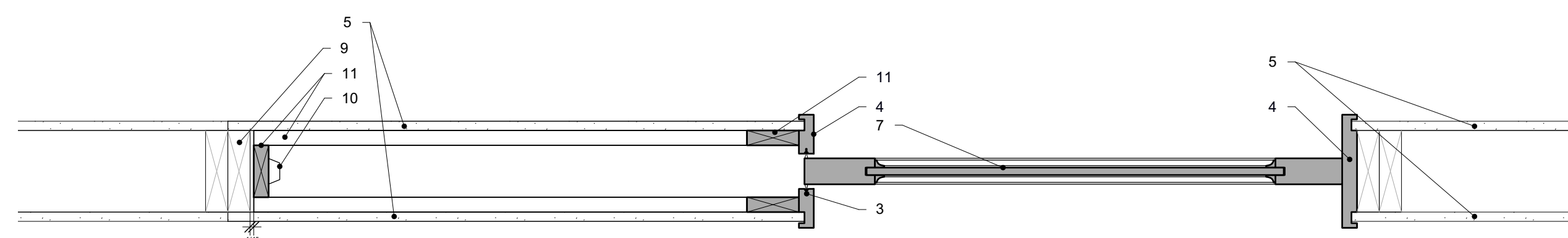
Section 05
1 1/2" = 1'-0"



Pocket Door Assembly Elevation 01
1 1/2" = 1'-0"



Section 04
1 1/2" = 1'-0"



Pocket Door Assembly - Horizontal Section 02
1 1/2" = 1'-0"

2x6 Architectural Millwork Pocket Door Assembly with PPDS

1. Header (By Others)
2. PPDS bar. Bar to be adjusted to level position using vertical adjustment bolt. (Included)
3. Ultrafab Kerf Mounted Pile Weatherstripping. (Included)
4. Pre-manufactured pocket jamb. By Architectural Millwork. (Included)
5. Wall finish (By Others)
6. Pre-manufactured pocket casing. By Architectural Millwork. (Included)
7. Door leaf. 1-3/4" By Architectural Millwork. (Included)
8. Hawa Junior 80/B trolley hanger assembly. Refer to manufacturers instructions. (Included)
9. Structure (By Others)
10. Bumper. (Included)
11. Pre-manufactured pocket frame. By Architectural Millwork. (Included)

Architectural Millwork
Pre-Manufactured Pocket

petersonpocketdoorTM
SYSTEMS