



## THE SUPERIOR SOLUTION

	feevr	Handheld Temporal Scanners	Large Commercial Scanners
Skin temperature reading	✓	✓	✓
Fast	✓		✓
Pick-up-and-go / mobile	✓	✓	
Non-contact solution	✓	✓	
Avoids cross-contamination	✓		✓
Multiple temperatures at once	✓		✓
Display option for skin vs core temperature	✓		✓
Supports Social Distancing	✓		
Continuous monitoring	✓		✓
Customizable alert system	✓		✓
Accompanying app and support	✓		✓
Analytics	✓		
Data summary/report	✓		
Crowd scanning	✓		
Algorithm based core temperature output	✓		✓
Efficient NETD*	✓		✓
Cost efficient vs. deliverables	✓		✓



# THE SUPERIOR SOLUTION

## Handheld Temporal Scanner

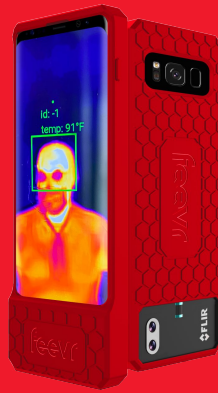
iProven  
Vicks  
Exergen  
Modern Medical  
TrackAid  
InNOvo

### PROS

- Compact
- Easy to carry
- Widely available
- Multiple brands
- Low-cost
- Cleared by the FDA for usage

### CONS

- Elevated NETD\*
- High risk of cross contamination
- Requires security measures by personnel
- Time consuming for large groups
- Needs additional person to administer
- Complete scans take 8-10 seconds
- Max accuracy requires swipe across forehead
- Less reliable outdoors
- Non-customizable
- Alert temperature is not customizable
- No software/data support



# feevr

## BEST OF BOTH WORLDS

- Accuracy readings are  $\pm 0.4^{\circ}\text{F}$
- Algorithm supported temperature analysis
- Option to display core temperature
- Supports social distancing - can scan temperatures up to 20 ft away
- Can screen up to 10 people in less than 5 seconds - fast and efficient crowd screening
- Data collecting option available for corporations
- AI supported analysis
- Continuous and instantaneous temperature readings
- Customizable alert temperatures
- Cleared by the FDA for usage<sup>1</sup>
- Low NETD
- Cost efficient compared to effectiveness
- Mobile - pick up and go

## Large Commercial Scanners

HiK Vision  
Omnisense  
Seek Scan  
Thermoteknix  
Realwear  
Meridian X Pro

### PROS

- Decrease risk of cross contamination
- Remote administration
- Multiple individualized scans taken at once
- Continuous crowd scanning
- Limited data collection
- Lower NETD\*
- Supports social distancing
- Alert temperature customizable

### CONS

- Starting price \$33K and higher
- Multiple offerings required - permanent installation
- Heavier models require team of people to move around
- Mobile units require additional hardware
- Lack of software support
- Connectivity issues to VMS
- No app supported
- Fixed heat source required for calibration



## DISCLAIMERS

Feevr is intended to be used as a screening device intended to perform a preliminary scan. If an individual is identified as having an elevated skin temperature, they should receive a secondary temperature reading and accompanying medical tests as determined by a medical professional.

\* - NETD (Noise Equivalent Temperature Difference) expressed in milli-Kelvin (mK). NETD measures accuracy in relation to ambient temperature surroundings. NETD levels of 150+ mK results in higher risk of inaccurate temperature readings.

<sup>1</sup> - Cleared by the FDA for usage <https://www.aha.org/news/headline/2020-04-17-fda-greenlights-telethermographic-systems-use-covid-19-triage>