

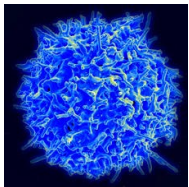
Application

The forks can be used individually or in tandem with each other. Simply activate the fork and scan along the affected area of the body. The forks should always be about 2 to 3 inches from the body. The forks can also be activated simultaneously by striking the flat tip of each fork on the activator. When using this method, direct the tines so they are facing the affected area of the body.

Testimonial

There is a testimonial currently on another website in which a woman attending a tuning fork workshop reports that after using the Genesis and Shekinah tuning forks helped to create a miraculous healing by the end of the evening.

Unfortunately this information can not be verified at this time. However we believe this is one of many tools that can be used to help support the body systems.



*** Medical Disclaimer ***

The contents of this brochure is presented for general informational purposes only. You should always review it with your doctor who knows your unique medical history and medications. The information at this site is NOT presented as medical opinion, advice or recommendation, nor is it intended to treat or cure any disease or disorder, nor to substitute for consultation, diagnosis or treatment by your M.D. or other medical professional. No health care decisions should be made solely on the basis of the information you read here. Never rely on information you find here instead of seeking professional medical advice. Always consult with your doctor before taking any action with regard to your health care.



1414 E. Houghton Ct.
Spokane, WA 99217
Phone: 509-723-2379
E-mail: sozosoundz@gmail.com



Cellular Support Kit



Includes

Shekinah Tuning Fork, Genesis Tuning Fork and activator.

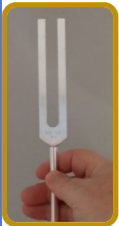
Tel: 509 723 2379

CARE

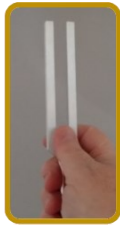
Tuning forks are calibrated to a certain frequency. Misuse or improper care can damage the frequency and the fork. For this reason, never strike the fork against a hard surface such as a table or floor. Also, the forks should be stored at room temperature. Any long exposure to temps beyond 10 degrees below or above can damage the frequency as well. Because of this, it is suggested that you DON'T store your forks in a vehicle.

HOLDING

When holding a tuning fork, always hold it by the stem. Do not touch the tines of the fork as it will stop the fork from vibrating. Keep your wrist flexible and relaxed. Your fingers should be soft but firm enough to hold onto it.



RIGHT
Hold by
Stem
only.



WRONG
Do not touch
vibrating
tines when
grasping
fork.

ACTIVATION/TONING

To activate a fork, you need to either use an approved activator such as a hockey puck, a rubber mallet or even your hand or knee or thigh. In this case, we have included a hockey puck which will be used for the Shekinah and Genesis tuning forks.

Generally, you will hold the hockey puck in one hand and strike the tuning fork on the puck with the other hand. *Note* The tuning fork should always be struck on the flat side as shown. Never on the front face of the tines.



Genesis Tuning Fork 531 Hz

Genesis means the origin or mode of formation of something. In other words, creativity. Many that have used the tuning fork have reported feeling whole. The creators of the tuning fork claim that the tuning fork will move bones and joints back into place when they are out of alignment. When used in combination with other forks, others claim this causes things to happen or to create things.

Benefits as reported by various users:

- ◆ **Helps to support healthy cells when used alone or with the Shekinah fork.**
- ◆ **Helps in alignment of bones and joints especially when used with the Miracle 528 Hz fork.**
- ◆ **Helps to support healthy muscles and tissues.**
- ◆ **Helps to inspire a meditative state in which creativity and revelation is enhanced.**

Shekinah Tuning Fork 1185 Hz

In Theology, Shekinah represents the presence of God on earth or a symbol or manifestation of His presence.

The Shekinah is associated with the transformational spirit of God regarded as the source of prophecy:

After that thou shalt come to the hill of God, where is the garrison of the Philistines; and it shall come to pass, when thou art come thither to the city, that thou shalt meet a band of prophets coming down from the high place with a psaltery, and a timbrel, and a pipe, and a harp, before them; and they will be prophesying. And the spirit of the LORD will come mightily upon thee, and thou shalt prophesy with them, and shalt be turned into another man.

1 Samuel 10:5-6

Benefits as reported by various users:

- ◆ Helps to support healthy cells when used in tandem with the Genesis fork.
- ◆ Helps to reduce stress.
- ◆ Helps to calm the spirit, anxiety, and nervousness.