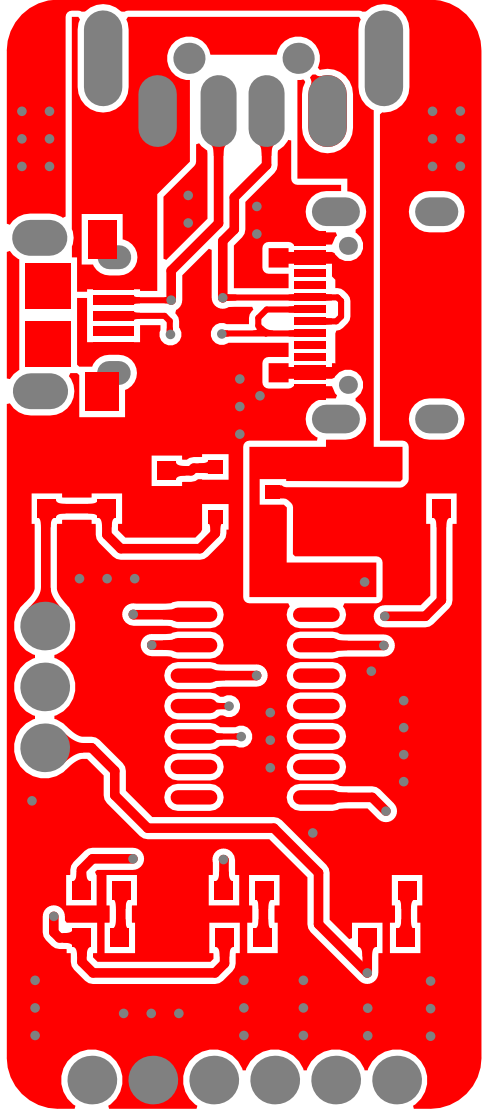
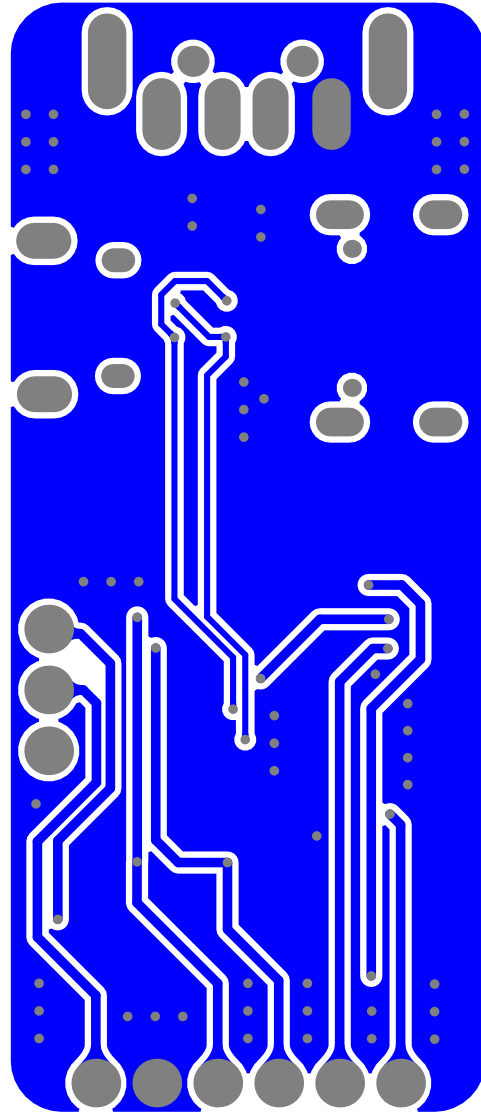
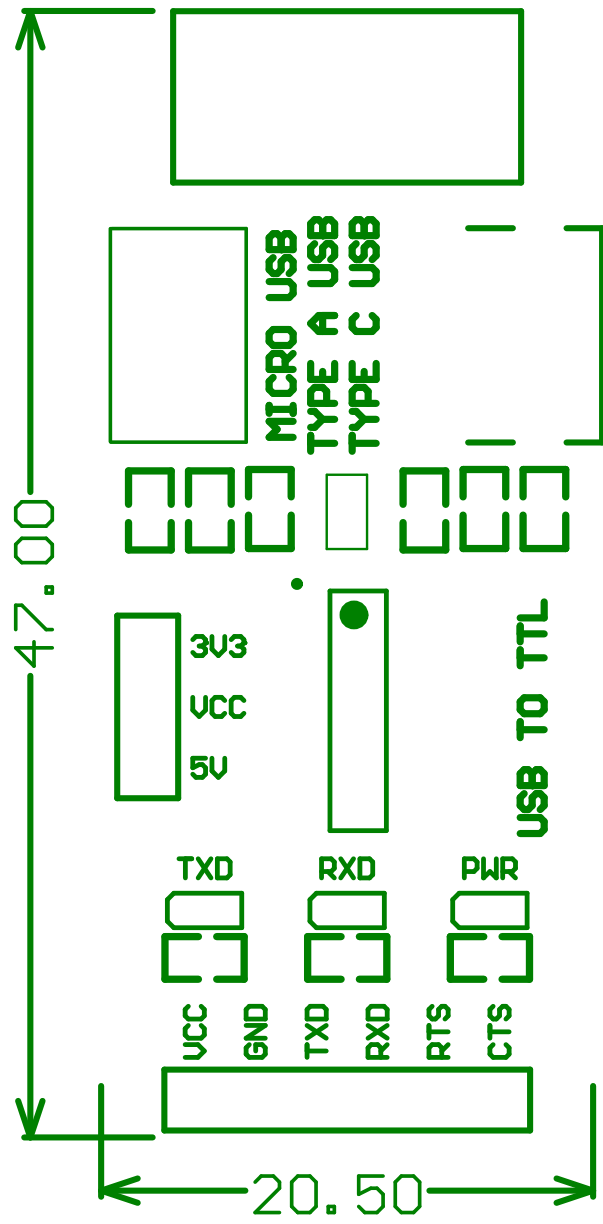


USB TO TTL_CH340			
Size: A4	Revision: V1.0	Sheet: 1/1	SB Component Ltd.
Date: 29-03-2022	Time: 15:42:56	DrawnBy: Deepak Singh	Kemp House, 152-160, London EC1V 2NX.









звод. зр-составление.с.со.рк

С12

Р12

ВХД

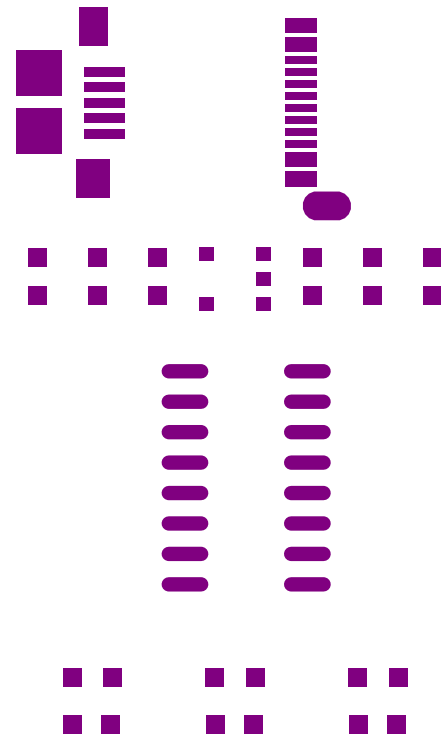
ЛХД

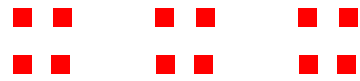
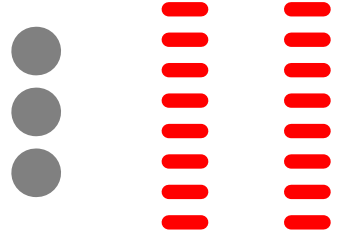
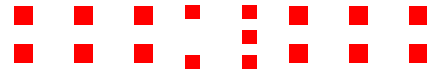
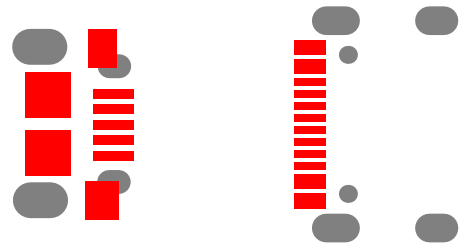
GND

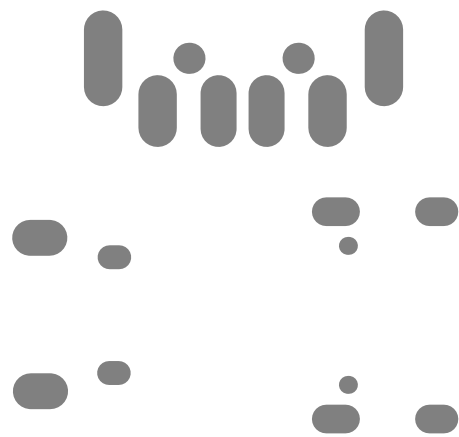
NCC

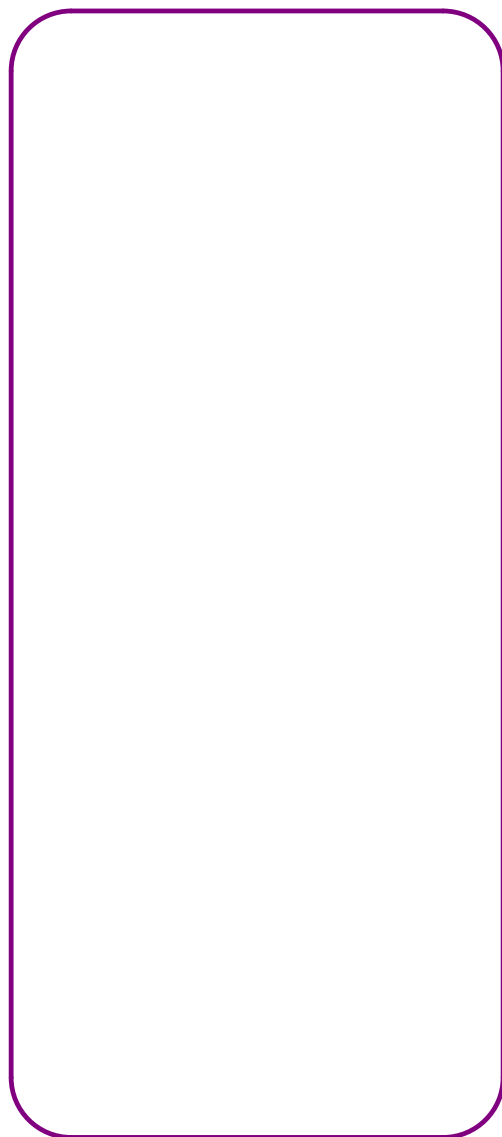


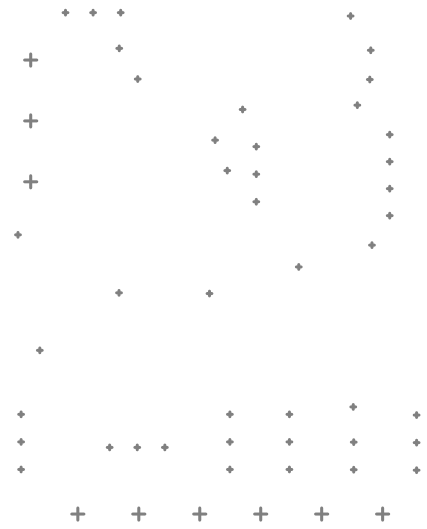
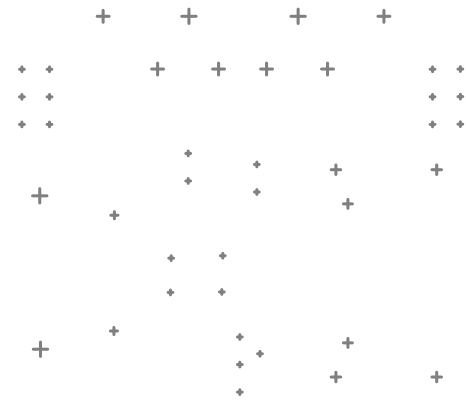
 **SP Components**
We Make Things Intelligent











Comment	Description	Designator	Footprint	LibRef	Quantity
0.1uF		C1, C3, C5, C6	CAP_0603_NONPOLAR	CAP_NONPOLAR	4
22nF		C2	CAP_0603_NONPOLAR	CAP_NONPOLAR	1
1uF		C4	CAP_0603_NONPOLAR	CAP_NONPOLAR	1
CON6		CN2	CON6_BJ	CON6	1
CON3		CN3	CON3_BJ_3D	CON3	1
LED		L1, L2, L3	LED_0603_neg	LED	3
1K		R2, R3, R4	0603	RES	3
RT9193-33GB	300mA 70dB@(100Hz),50dB @(10kHz) 300mV@(300mA) Fixed 3.3V~3.3V Positive 1 5.5V SOT-23 5 Linear Voltage Regulators (LDO) ROHS #C15651	U1	SOT-23-5	RT9193-33GB	1
CH340C		U2	SOIC_16	CH340C	1
USB TYPE-C-31-M-12	250mA 1 16 Female Type-C SMD USB Connectors ROHS # C165948	USB1	USB TYPE-C-31-M-12	USB TYPE-C-31-M-12	1
USB	Micro USB Connector SMD – TH Support Legs – 5 Pin – Type B	USB2	USB_MICRO	USB_MICRO	1
USB-A-TYPE		USB3	USB-A-Type MALE	USB_CON	1