



Assembly Instructions

Thanks for your purchase! Handy Stands are designed to be easy to assemble. All you need is a Phillips-Head screwdriver and your hands!

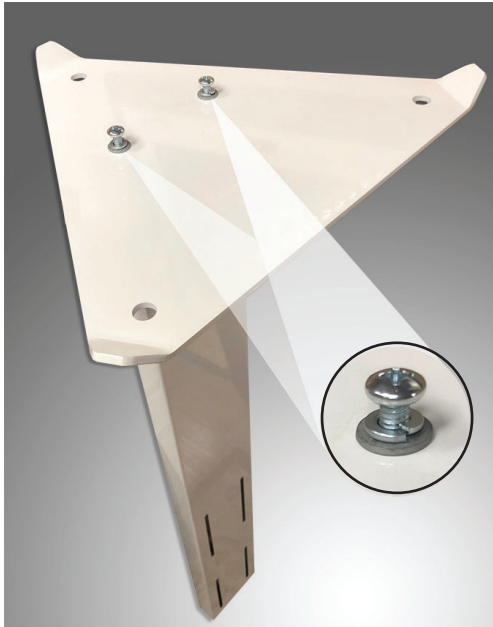


Figure 1

Step 1

Attach the triangular base to the tower using the provided 1/4"-20 Phillips screws (x2), 1/4" lock washers (x2), and 1/4" flat washers (x2).

Place the lock washers on the screws followed by the flat washers.

Insert the screws through the **underside** of the base into the pre-installed hex nuts in the bottom of the tower. *(It's easier if you flip everything upside down)*

Tighten using a Phillips-head screwdriver.

*See Figure 1



Figure 2

Step 2

Attach the upper retaining ring and lower bottle tray through the tower's slots using the 1/4" Wing nuts (x4) and 1/4" flat washers (x4). *See Figure 2

Loosen the wing nuts to adjust to your desired bottle height and position. Make sure that the upper retaining ring is placed tight against the top of the bottle, then tighten wing nuts. ***For added security, you may choose to replace the wing nuts with standard 1/4"-20 hex nuts (not included).**

Note: Both the retaining ring and the bottle tray are designed to be reversible to give your bottle the most secure fit.

For small bottles: Flip the bottle tray with the flanges facing upward. This helps prevent bottle removal once secured. You may also choose to utilize only the top or bottom set of slots. The retaining ring can also be flipped to offer an even tighter fit. **For large bottles (2 liters and above):** Position the bottle tray with the flanges pointing down. This gives wider bottles more room to rest on the tray.

Questions? Contact us @ www.HandyStands.com