



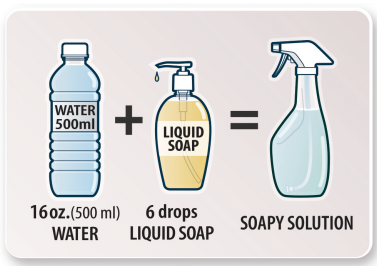
USER'S MANUAL / INSTALLATION GUIDE

Installing window films can have a learning curve, but we are confident that well prepared and instructed users can get excellent results. This is a more comprehensive guide to installing window film, and we hope to cover every possible aspect to installation. Having two people to install window films can help but it is not needed.

TOOLS YOU WILL NEED

- 1. Installation solution (soapy water) :** This can be made by adding 8-16 drops of liquid soap for every 16 oz of water. The solution does not have to be exact, but the solution should feel slippery when rubbed between two fingers. Fill a spray bottle with this installation solution (soapy water).
- 2. Squeegee :** Every one of our films comes with a squeegee but you may want to use a larger one for larger windows. Although it is not necessary it can be quicker with a large squeegee. Keep in mind the squeegee should be hard in order properly squeeze out the water during installation.
- 3. Glass safe razor blade :** Every one of our films also comes with a retractable razor blade. These blades will not scratch glass. We think our retractable knives are of good quality, but you can always use industry standard OLFA blades that are safe for glass.
- 4. Microfiber cloth :** Any cloth that is low or no lint is recommended. These should be used to clean and soak up excess installation solution.

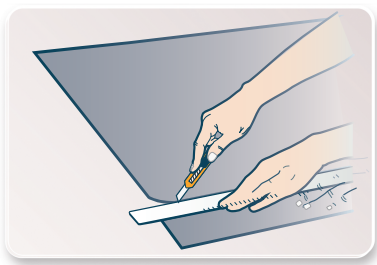
1. PREPARATION



1-A. Installing window film on a cool day and not in direct sunlight is ideal, optimal temperatures are between 60-75 degrees F.

1-B. An adjacent work surface next to the window is recommended, which extra towel or cloth to soak up excess spray from the installation solution.

2. MEASURE AND CUT THE FILM



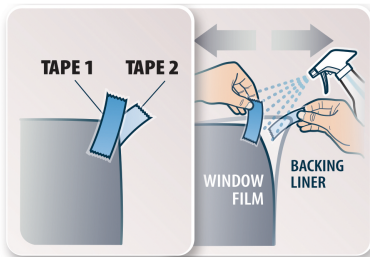
- A.** It will be much easier to install film on smaller windows, so we suggest starting with the smallest window you are going to install film on.
- B.** Measure the width and height of the glass and then add at least ½ inch to each measurement. This extra margin will aid in the 'trim to fit' step of the installation.
- C.** You can then cut the film from the roll with these measurements. The films may not be exactly square, so it is best to just rely on using the straight length side of the roll of film.

3. CLEAN AND WET THE GLASS



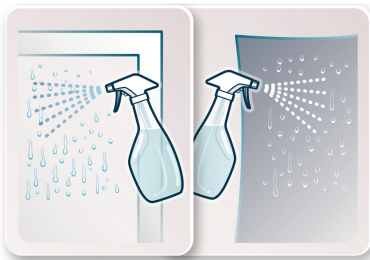
- A. It is best to clean the window with a window scraper before any installation. A window scraper is a glass safe razor blade, usually with a handle that can scrape the glass of any contaminants without scratching the glass. Using the window scraper and installation solution all over the window will clean it of any caked-on dirt that wiping will not remove.
- B. You can use the installation solution to also clean the window. Any non-ammonia-based cleaners can be used to clean the window too. Blue Windex is ammonia based and should be avoided.
- C. Using a no lint or low lint cloth will ensure the glass will be free of any dust.
- D. It is recommended to clean the surrounding area of the glass, like the frame and seals before installation too.

4. REMOVING THE BLACKING/LINER



- A. Fine a corner of the film and start to separate the liner and film. The liner will always be clear and thinner than the film.
- B. The best way to separate the film and liner is to use two pieces of tape. Attach one piece of tape to a corner of the film, half of the tape should be on the film and the other half should hang past the corner. Then use another piece of tape of the other side of the same corner. Hold onto the two over hanging pieces of tape and press them together, but not all the way. Then slowly separate the two pieces of tape; the liner and film should separate.
- C. As you gently pull the liner away, spray the exposed adhesive side with the installation solution. This will make the film heavier and easier to manage, it will also prevent the film from sticking to itself or to anything else.

5. APPLYING THE FILM TO THE WINDOW



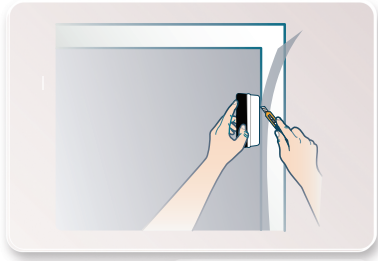
- A. Spray the window all over with the installation solution.
- B. Wet your fingers with the installation solution and pick up the film by the corners.
- C. Lay the film on the window starting from the top. You can then move the film around into position.
- D. If you are working with at least one straight edge or corner, you can position the film to the edge or corner, making sure the film is not touching the frame. The rest of the edges will have excess film.
- E. When the liner is all pulled away, the film's exposed adhesive side should be fully wet.

6. SQUEEGEEING THE FILM



- A. Spray on top of the film with the installation solution, this will help your squeegee glide across the film.
- B. Use the squeegee and start at the center of the top and move out towards the sides, along the top.
- C. Then squeegee down the center from the top to the bottom, creating a 'T'.
- D. Then always starting from the center, squeegee out towards the edges starting from the top to the bottom.
- E. Squeegeeing pressure should be firm to ensure proper extraction of excess moisture. Solution on top of the film will help the squeegee glide across the film while maintaining firm pressure.

7. TRIMMING TO FIT ON THE WINDOW



A. The edges with excess film will have to be trimmed, and this will be done using the squeegee and included retractable razor blade.

B. Using the squeegee as a guide, cut the film down the edge. The razorblade should be between the frame and squeegee, and the squeegee should be applying pressure towards the frame as you cut along the edge. A more advanced technique will use the razor blade to cut along the edge of the film and frame. It is best to have the squeegee up against the frame, between the razor blade and the frame. It will also create a tiny margin between the frame and the window, ensuring a perfect fit. (This technique can be harder for inexperienced installers)

C. Repeat this with all the edges.

D. Use a low lint cloth wrapped around the squeegee and squeegee the film again. The cloth will soak up any remaining moisture as you squeegee towards the edges.

8. POST INSTALLATION

A. Congratulations, you have installed window film. Each install will become easier and easier as you refine your techniques.

B. You can clean the film with the installation solution or with any non-ammonia-based window cleaners.

C. It can take a few days for the film to dry, and up to two weeks for it to fully cure.

Q & A : INSTALLATION TIPS

Is the film difficult to apply?

Anyone can install window film, but there may be a learning curve. Please visit the link below to view the installation video.

www.buydecorativefilm.com/installation

It will be easier once you practice with a smaller window first.

Can you do this by yourself?

Yes. However if your window is bigger than 30" wide, help from an extra person will make the installation easier.

How do I handle sticky window film?

Using a liberal amount of water solution (16oz. water+6 drops liquid soap) will make handling this film easier. Spraying water solution on the adhesive side as you pull off the liner will prevent the film from being sticky.

This will prevent the adhesive side from sticking to itself, eliminating potential wrinkles and bubbles during or after installation.

The film is not adhering. Why?

Window films come with a backing liner to protect the adhesive or static surface. The backing liner needs to be separated from the film first. Film may stay on window without removing the liner, but it will come off in a few hours or days.

Is this applied inside or outside of the window?

Inside. All window films should be installed inside except for films that are specified as "EXTERIOR FILM".

How do I separate the backing liner from the film?

The best way to remove the liner is to attach 2 pieces of tape on both sides (they should be slightly askew & facing each other) of one corner of the film. Press the tape firmly together, and then slowly separate the two pieces.

One piece should grab onto the film and the other should grab onto the liner. Do not use a knife to separate them.

Refer to the video starting from 58 sec. of www.buydecorativefilm.com/installation

Which liquid soap should I use for the water solution?

Any type is fine, from dishwash to hand soap. You may get the best result with baby shampoo. For reference, a small 500ml water bottle is 16.9 oz. Mix with 6 drops of liquid soap.

How come I don't have privacy at night?

Privacy effect works when there is a difference in lighting. At night, if it is brighter inside than it is outside, the privacy effect will be reversed. This is why our privacy films are known as day time privacy films. True 24 hour privacy is only possible with opaque films.

Can I remove this film later?

Yes. A fabric steamer or a heat gun can heat up the film and loosen the adhesive. Using a hair dryer can heat up the film to loosen the adhesive, but it will take longer. If there is remaining adhesive residue, it can be easily removed with soapy water and a razor blade. Static cling film can be removed by hand.