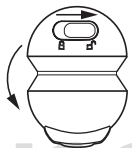


Connecting product

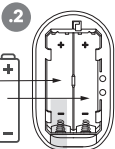
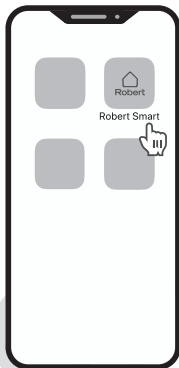
1

slide the lock switch to open camera



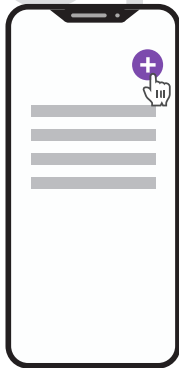
1

2



remove the cap

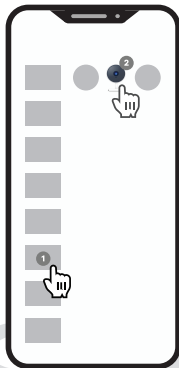
3



230V

Due to constant development, our App design and functionality might be different after updates. Please adjust accordingly or visit robertsmart.com (v01)

4

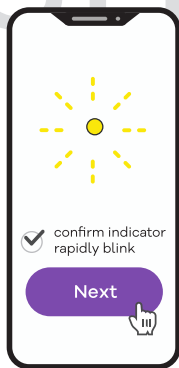


1
Video Surveillance

2

Smart camera

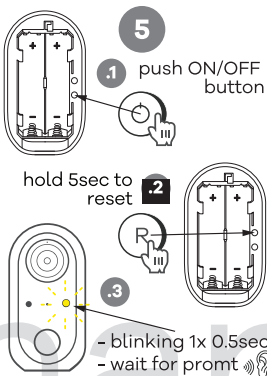
6



confirm indicator rapidly blink

Next

5



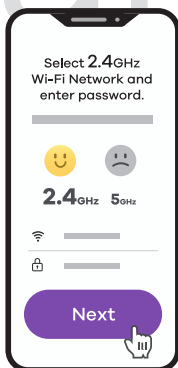
1 push ON/OFF button

hold 5sec to reset



3
- blinking 1x 0.5sec
- wait for prompt

7



Select 2.4GHz Wi-Fi Network and enter password.

2.4GHz 5GHz

Next

8

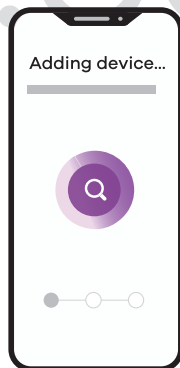


Use camera to scan QR code

15-20 cm

I heard a Prompt

10



Adding device...

9



1

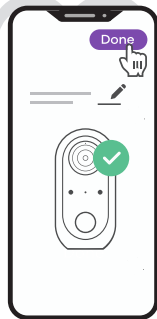
prompt tone

2



I heard a Prompt

11



Done



For Your convenience we strongly recommend to rename your product. Please choose intuitive description