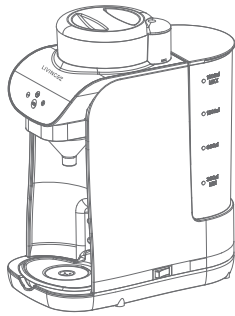


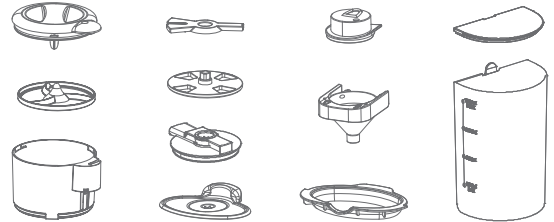
# QUICK START

## 1. UNPACK THE BOX CONTENTS

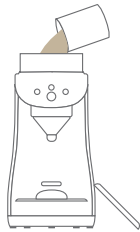


## 2. PREPARE BEFORE DISPENSING FORMULA

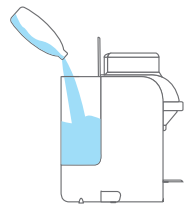
- 1 Please clean and dry the following parts before use:  
(Note: Please clean following parts using warm water only: Powder Box, Powder Box Cover, Water Tank, Water Tank Cover, Adjustment Tray, and Water Tray. High temperature could cause damage or deformation and should be avoided.)



- 2 Fill formula powder into the powder box (preferably 300g, no more than 400g) and close the powder box cover



- 3 Fill up water tank with filtered water only. Do not exceed the maximum level (around 1,800ml). Then turn on the machine and put baby bottle on the tray



## 3. DOWNLOAD LIVINGEZ APP AND CONNECT TO WI-FI

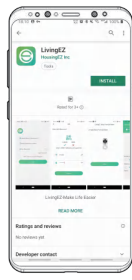
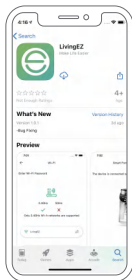
### 1. Download LivingEZ

Scan the QR code using your smart phone camera and follow the pop up instruction or go directly to Apple App Store (iOS device) or Google Play (Android Device) and search for LivingEZ app



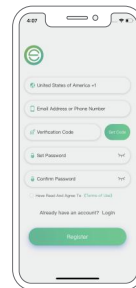
iOS 9.0 & up

Android 4.1 & up



### 2. Sign Up

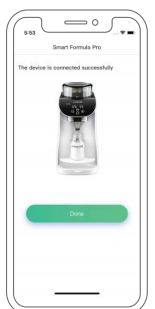
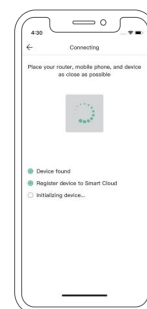
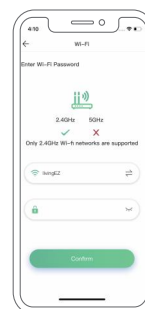
Create your account



### 3. Connect To A Wi-Fi Network

Press and hold "+" button for 10 seconds, the machine will beep and enter connecting mode. The Wi-Fi indicator will keep flashing, then click the "NEXT".

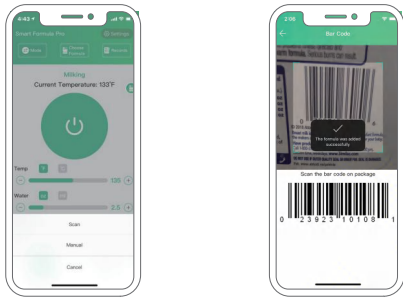
Connect to the same Wi-Fi as your smart device (phone or tablet) is connected, please wait for a few minutes until connection is finished.



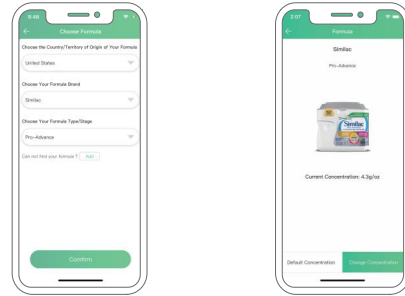
## 4. FORMULA SETTING

### Choose Your Formula

There are two options for you to choose the formula: "Scan" / "Manual". Scan bar code of your formula, usually you can find the bar code on your formula can.

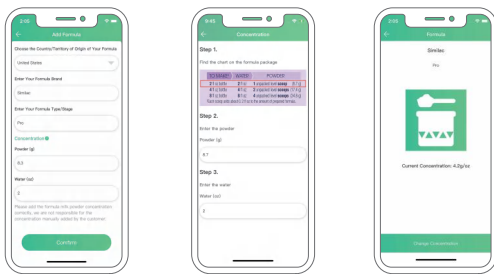


If you cannot find your formula by bar code scan, you can pick up the formula manually.



### Add A New Formula Function

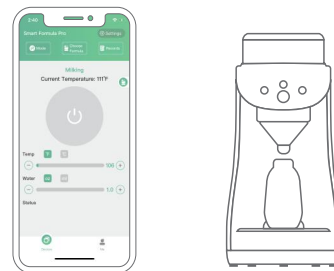
If you still can not find your formula in our formula database, you can add a new formula by yourself.



## 5. WATER AND TEMPERATURE SETTING

### Set The Temperature And Water Volume

Set water volume and temperature on the machine panel or Living EZ app.

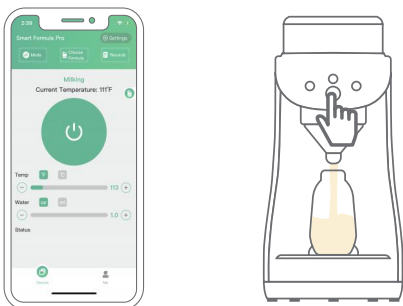


## 6. MAKE A FORMULA BOTTLE

### Click The Green Button To Make Baby Bottle

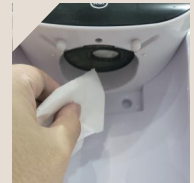
Wait for the Formula indicator light up steadily (The button turns green on App), indicating that the heating is completed. Then Press "Start" button on the machine panel or LivingEZ App to dispense your perfect baby formula.

Note: The temperature increment/decrement is 2 degrees.



## 7. CLEANING AND CARE

### Daily Cleaning



Remove Funnel & Funnel Cover by pulling out and down. Wash Funnel & Funnel Cover with warm, soapy water & rinse well.

Wipe the powder-dispensing hole on the underside of the powder box using a dry paper towel or soft dry cloth.

Note: Dry completely before re-installing.

**VERY IMPORTANT**

NOTE: You don't have to remove the powder box or the powder box parts for daily cleaning.

### Weekly Cleaning



Remove the bottle tray and clean the water in the bottom once a week.

Once all formula powder in the powder box has been used up, remove and clean powder box. Note: To remove the powder box, use your both hand and pull it out.



Refill the powder when the powder turntable become visible. This is very important for accurate formula measuring.

**VERY IMPORTANT**