

T@B Front Storage Bin Installation Instructions:

The storage bin panels are designed to fit T@B's with the standard plastic molded propane/battery box. Panels will not fit models with the Outback diamond plate propane/battery box platform.

Contents of box: 1- Diamond plate top panel, 1-Expanded metal (mesh) bottom panel, 2- Keys, 11- 5/16" Hex head #12 x 3/4" self-drilling screws, 7- 1/4" Flat washers

Tools required:

Safety glasses, leather gloves, rubber mallet, or hammer with a small block of wood

Cordless drill, 5/16" nut driver for use with cordless drill, and a 11/64" drill bit

Duct tape, or heavy duty tape

3/8" ratchet with a 7/16" deep well socket and a 9/16" socket

7/16" combination wrench

****Safety first * While doing this project you will be working with metal, using power tools, and drilling into metal. This will produce metal shavings and the metal can have sharp edges. It is recommended to wear Safety Glasses and Gloves at all times during this project to prevent injury!***

Step one: Rerouting the T@B's 7 pin wiring cable.

You will need to route the 7 pin cable thru the front of the T@B's "A" frame tongue next to the hitch coupling (see figure 1). If you have trouble feeding the wire thru this opening you may want to remove the T@B's tongue jack. To remove the jack you will need to support the tongue with the front stabilizer jacks, or you can hook it to your tow vehicle. Once you have the tongue supported, remove the 3- 9/16" bolts holding the jack and remove the pin holding the jack's wheel. Pull up and remove the jack. Route the wire thru the opening, then reinstall the jack and jack wheel. ***Optional wire routing:** If you do not want to route the wire out thru the front of the frame, simply cut a small 2" x 3" section out of the bottom mesh panel (see figure 2). The section you will need to cut out is marked in green for illustration proposes only. Then route the 7pin cable out under the hitch coupling

Step Two: Mounting the diamond plate top panel:

Parts required for this step: Diamond plate top panel and 4- Hex head #12 x 3/4" self-drilling screws. You will need to slide the back edge of the diamond plate panel underneath the front edge of the propane/battery storage box (see figure 3). Open the lid of the propane storage box and pull up on the front lip of the box to slide the diamond plate cover underneath. Some of the propane boxes have enough flex to slide the diamond plate underneath the box using this method. If you have trouble getting the panel to slide underneath the propane box, shut off and remove the 20# propane tank. Use the 3/8" ratchet, 7/16" deep well socket and the 7/16" combination wrench to loosen the two mounting bolts for the propane storage box (see figure 4). Once you have the propane box mounting bolts loose, the panel should slide under the box. If needed, use the rubber mallet or the hammer with a block of wood to lightly tap on the edges of the diamond plate panel to align the panel at the front and both sides of the frame rails. Make sure the lid on the panel opens and closes without any interference. Also check the operation of the lock and latch. You will need to make sure you have enough

clearance (about 1/16" an inch) at the front of the lid, check to make sure the latch from the lock engages the trailer tongue (see figure 5). ****Caution: Before drilling or putting any of the screws in, check the inside of the frame rails for any wiring / obstructions and move them out of the way**** (see figure 6a & 6b). Once you are satisfied with the fitment and you made sure all wiring / obstructions are out of the way, it's recommended to predrill the holes using an 11/64" drill bit. Drill holes into the top frame rail, thru the 4 pre-existing holes in the diamond plate top panel (see figure 7). Use your cordless drill with the 5/16" nut driver to drive in the 4- Hex head #12 x 3/4" self-drilling screws **** Be sure not to over tighten, you may break the head of the screw off****. Once you have the screws tightened down, check the operation of the lid and lock, to make sure they work properly and the lock holds the lid securely closed. If you removed the propane tank and loosened the mounting bolts to the propane storage box earlier, be sure to tighten the bolts back down and reinstall the propane tank

Step Three: Mounting the bottom mesh panel: ***Please use caution, in addition to wearing your safety glasses, it is recommended to wear leather gloves while handling the mesh panel, it may have sharp edges.**

Parts required for this step: Bottom mesh panel, 7- 5/16" Hex head #12 x 3/4" self-drilling screws, 7- 1/4" Flat washers. To aid in mounting the bottom panel raise the front of the T@B as high as you can to give yourself more room. Tear off 4 pieces of duct tape about 6" to 8" long, place 2 pieces on the bottom of each side of the mesh panel (see figure 8) The tape will be used to hold the mesh panel in place while you are mounting it. Lift up the panel and hold it to the bottom of the frame rails; make sure to align the front and both sides of the panel to the frame rails. Once you are satisfied with the fitment, press the tape on to the outside of the frame rails to hold the panel in place. (See figure 9). ****Caution: Before drilling or putting any of the screws in, check the inside of the frame rails for any wiring / obstructions and move them out of the way**** (see figure 6a & 6b) Once you made sure all wiring / obstructions are out of the way, evenly space and mark 4 screws holes on the long side (passenger side) and 3 holes on the short side thru the mesh panel on to the frame rails. Before drilling, check fitment a second time and the inside of frame rails for obstructions. It's recommended to predrill the holes using an 11/64" drill bit. Once you have the holes drilled, use your cordless drill and the 5/16" nut driver, place 1 - 1/4" Flat washer on to each 5/16" Hex head #12 x 3/4" self-drilling screw and use your cordless drill to drive them into place. **** Be sure not to over tighten, you may break the head of the screw off****. Once everything is tightened down and you are satisfied with the fitment, lower the tongue jack back down

Final Step: If you moved any wiring or other components inside the frame rails, make sure to reinstall them. Check trailer wiring to make sure it's not rubbing against any items you installed, protect wiring if needed. Make a final check that everything is tightened down. Clean up, and you are ready to start using your new storage area.

****Please note this storage location was designed for sewer hose storage, it's not intended for small loose items. If you intend to store small items in this area be sure to put them inside a storage bag or container to prevent them from blowing out while traveling down the road**.**

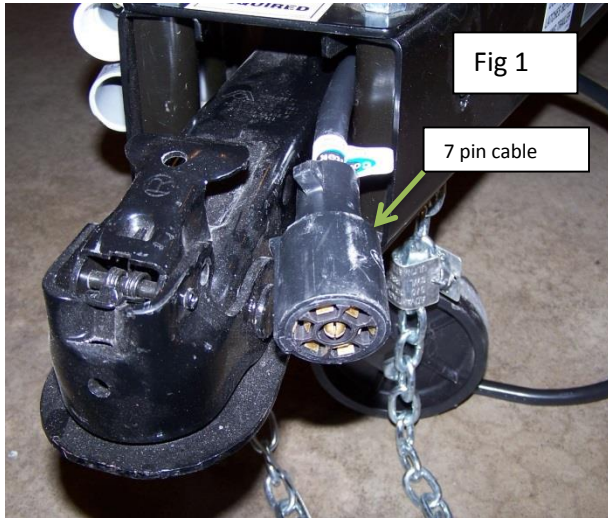


Fig 1

7 pin cable

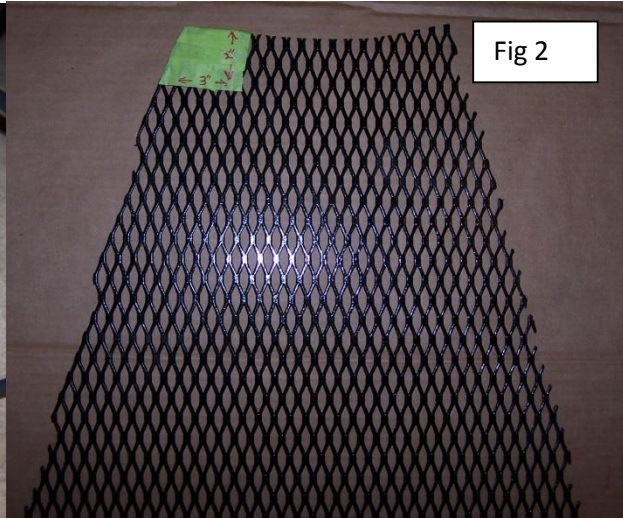


Fig 2

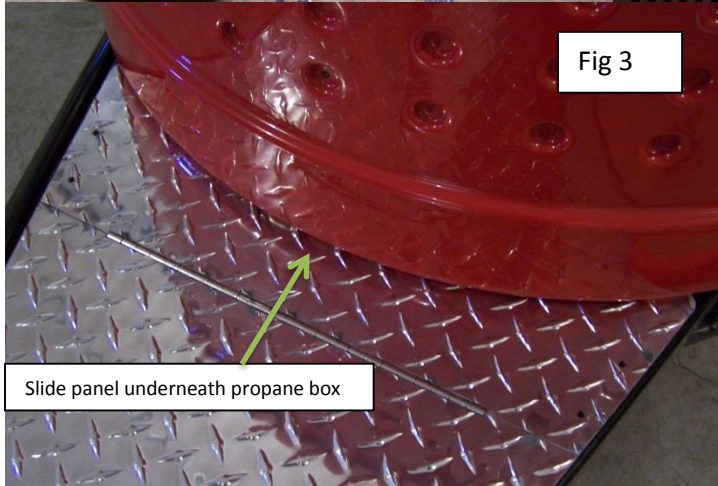


Fig 3

Slide panel underneath propane box

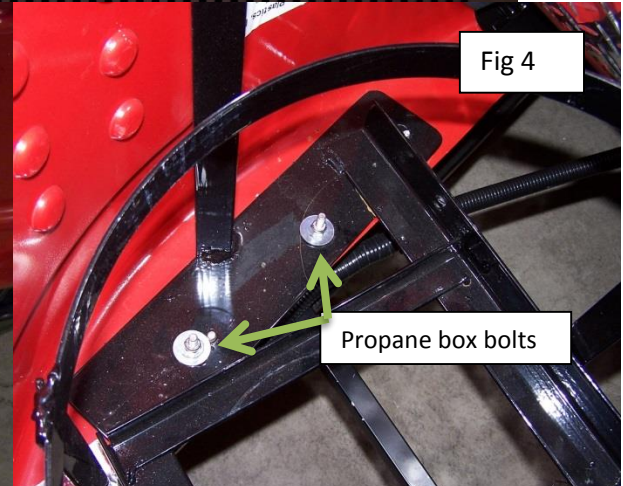


Fig 4

Propane box bolts

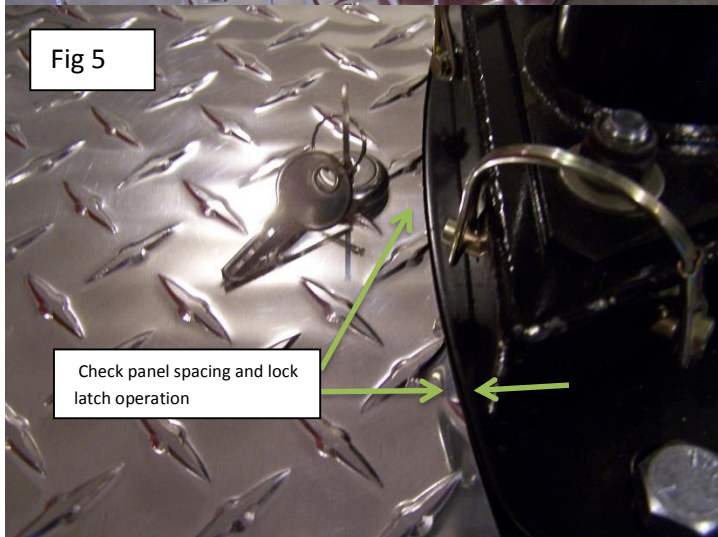


Fig 5

Check panel spacing and lock latch operation

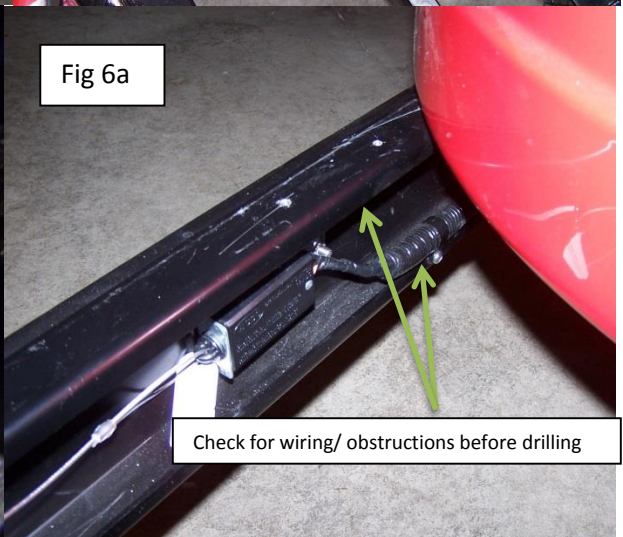


Fig 6a

Check for wiring/ obstructions before drilling

