



## If you're unsure of your correct ring size, please follow our easy step-by-step guide below.

If you do know your correct size, ensure you check it against our international ring size conversion chart on page 2 as all ring sizes on blackstaropal.com are listed in Australian measurements.



### Step 1

Select a ring that properly fits the finger that you intend to wear the ring on.



### Step 2

Place the ring over the circles below and match the inside edge of the ring to the circle nearest in size. If the ring size falls between two sizes, we recommend you select the larger size.



### Step 3

Double check sizing for accuracy or, if still in doubt, visit your nearest jewelry store for a personalised size assessment.

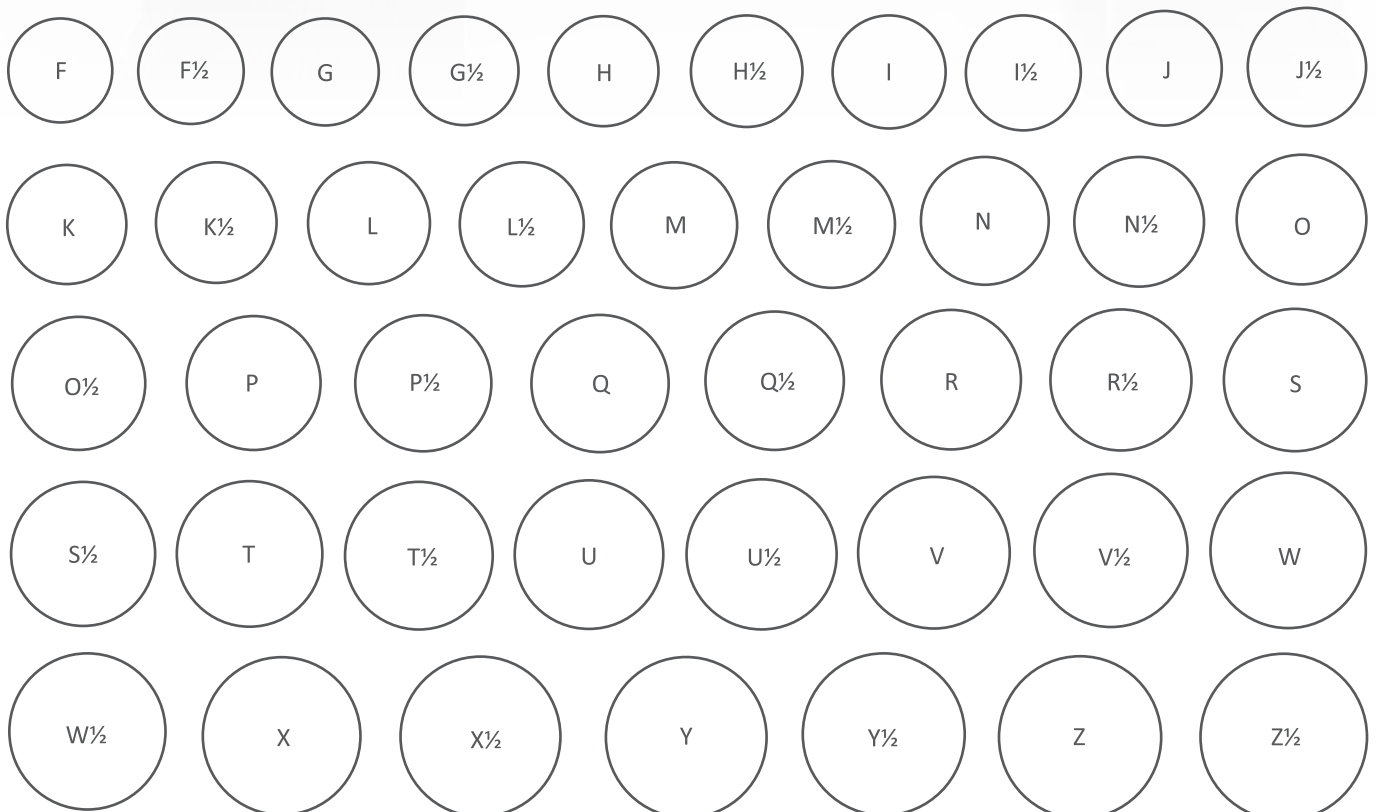


If you are purchasing a surprise gift, ask family and friends if they know her/his correct ring size or borrow one of their rings (for the correct finger) and follow STEP 2 to confirm the correct ring size.

## Confirm the printing scale of this document



1. Prior to printing, ensure that the scaling is set to none in the print dialogue box
2. Measure the scale bar to the left and ensure that it is exactly 1 inch or 30mm long. If the measurement is not accurate, check that you are printing the page at full size before continuing



# International Ring Size Conversion Chart

Black Star Opal sizes all rings according to Australian measurements

Australia	UK	Europe	USA & Canada	China	Singapore & Japan	Hong Kong	Switzerland	Circumference (mm)	Diameter (mm)
F ½	F ½	44	3	6	4	6	4	44.2	14.1
G	G	45			5		5 ¼	44.8	14.3
G ½	G ½		3 ½	7		7.5		45.5	14.5
H	H	46			6		6 ½	46.1	14.7
H ½	H ½	47	4	8	7	9		46.8	14.9
I	I			9			7 ¾	47.4	15.1
I ½	I ½	48	4 ½		8	10		48	15.3
J	J						9	48.7	15.5
J ½	J ½	49	5	10	9	11		49.3	15.7
K	K	50					10	50.0	15.9
K ½	K ½		5 ½	11	10	12		50.6	16.1
L	L	51					11 ¼	51.2	16.3
L ½	L ½	52	6	12	11	13	12 ¾	51.9	16.5
M	M			13	12			52.5	16.7
M ½	M ½	53	6 ½		13	14.5	14	53.1	16.9
N	N			14				53.8	17.1
N ½	N ½	54	7		14	16	15 ½	54.4	17.3
O	O	55		15				55.1	17.5
O ½	O ½		7 ½		15	17	16 ½	55.7	17.7
P	P	56		16				56.3	17.9
P ½	P ½	57	8	17	16		17 ¾	57.0	18.1
						18		57.2	18.2
Q	Q							57.6	18.3
Q ½	Q ½	58	8 ½	18	17	19		58.3	18.5
R	R	59					19	58.9	18.8
R ½	R ½		9	19	18	20.5		59.5	19.0
S	S	60		20			20 ¼	60.2	19.2
S ½	S ½	61	9 ½		19	22		60.8	19.4
T	T			21			21 ½	61.4	19.6
T ½	T ½	62	10		20	23		62.1	19.8
U	U			22	21			62.7	20.0
U ½	U ½	63	10 ½		22	24	22 ¾	63.4	20.2
V	V	64		23				64.0	20.4
V ½	V ½		11		23	25		64.6	20.6
W	W	65		24			25	65.3	20.8
W ½	W ½	66	11 ½	25	24	26		65.9	21.0
X	X							66.6	21.2
X ½	X ½	67	12	26	25	27.75	27 ½	67.2	21.4
Y	Y							67.8	21.6
Z	Z	68	12 ½		26		28 ¾	68.5	21.8
Z ½	Z ½	69						69.1	22.0
		70	13		27	30		69.7	22.2
Z+1	Z+1							70.4	22.4
Z+2	Z+2		13 ½					71.0	22.6