

XEBEC



TRI-SCREEN 2

USER GUIDE



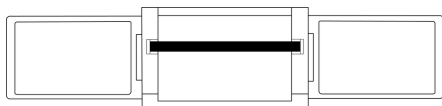
Check out our Getting Started Guide online at
www.thexebec.com/pages/get_started

Contents

- 3 | Parts Overview & Inputs and Buttons
- 4 | Connect Your Tri-Screen 2
- 5 | Set It Up
- 6 | Laptop Display Configuration
- 8 | Customize Your Tri-Screen 2 & Kickstand
- 9 | Tech Specs
- 10 | Pack Up and Go & Additional Help
- 11 | Product Safety
- 12 | FCC Compliance
- 13 | Warranty

Parts Overview

Tri-Screen 2



Velcro
Cable Tie



2 x USB-C to USB-C
90 Degree Cables

VIDEO & POWER



2 x USB-A to USB-C Adapters



1 x USB-C
Extension Cables



USB-C 90-Degree
Pass-Through
Charging Adapter

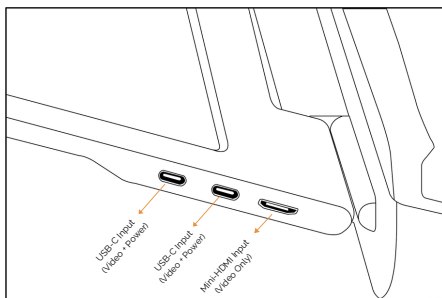
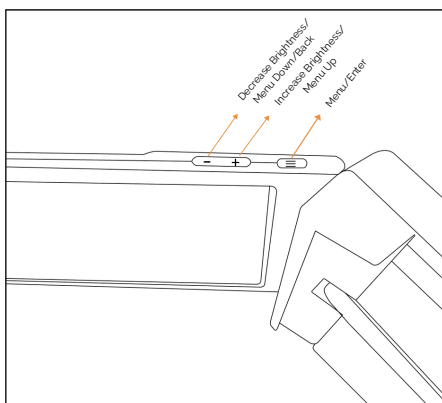


2 x Mini-HDMI
to HDMI Cables

VIDEO ONLY



Inputs and Buttons




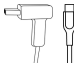
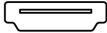

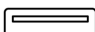

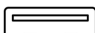
Connect Your Tri-Screen 2

You can visit the online Getting Started Guide to see how to connect your specific laptop:

www.thexebec.com/pages/get_started

or

Reference the laptop ports shown below to identify which cable(s) you will use to connect each screen to your laptop.

Laptop Port(s)	Cable(s)
 Thunderbolt 3 / USB-C with DP*	USB-C to USB-C (90 degree) cable VIDEO & POWER 
 HDMI +	Mini-HDMI to HDMI cable VIDEO +
 USB-C (Power Only) or	USB-C to USB-C 90 degree cable POWER or
 USB-A	USB-A to USB-C Adapter 
 USB 3.0 (with Xebec Tri-Screen Adapter)	Xebec Tri-Screen Adapter *not included in box* VIDEO & POWER



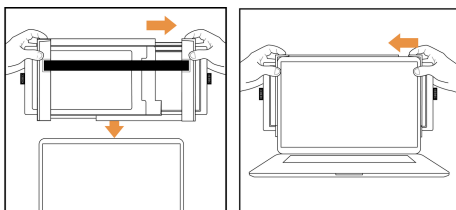
If you didn't purchase a Xebec Tri-Screen Adapter at checkout, scan the QR code to order now.

To learn more or if you have any additional questions, visit: www.thexebec.com/contact

Set It Up

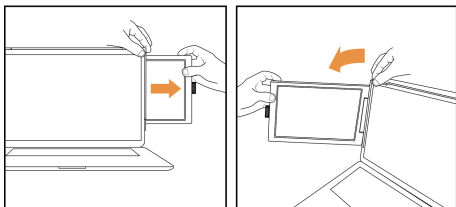
1. PUT IT ON

Place your thumbs on either side of the bracket (as shown) and expand to the width of your laptop's screen. Place the bracket over the back of the screen and slowly release, allowing the bracket to hug the edges and sit on top of the laptop screen.



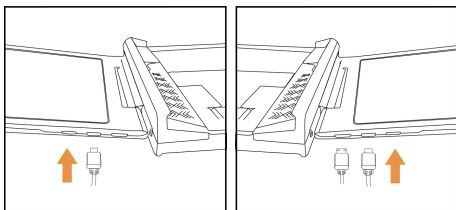
2. SLIDE IT OUT

Grab the tab and slide out the screen from the bracket. Repeat on the other side, then tilt the screens to your desired viewing angle.





3. PLUG IT IN

Using the necessary cables (identified on the previous page), plug one end into the Tri-Screen 2 and the other into your laptop. See "Inputs and Buttons" on page 3 for an input diagram.



Laptop Display Configuration (PC)

PC/WINDOWS

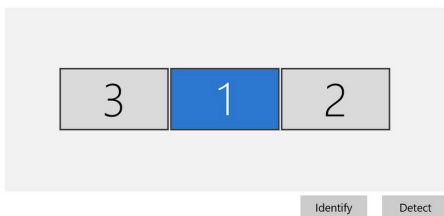
1. Go to your Display Settings (Start  > Settings  > System > Display)
2. Click "Identify" to identify the number on each screen
3. Click and drag the numbered screens to the configuration shown below*
4. Ensure that "Extend these displays" is selected under Multiple Displays menu
5. To increase the zoom, click the "Change the size of text, apps, and other items" dropdown and select 150%, or preferred zoom

**screens 3 and 2 might need to be swapped based on your specific setup*

Display

Select and rearrange displays

Select a display below to change its settings. Some settings are applied to all displays.



Scale and layout

Change the size of text, apps, and other items

[Advanced scaling settings](#)

Display resolution


Display orientation

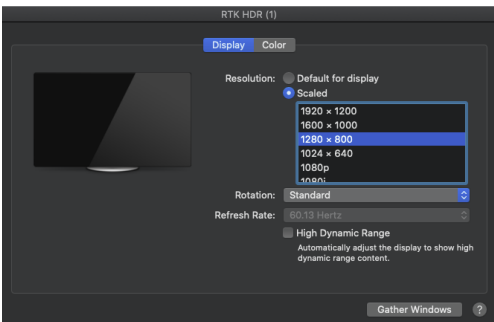
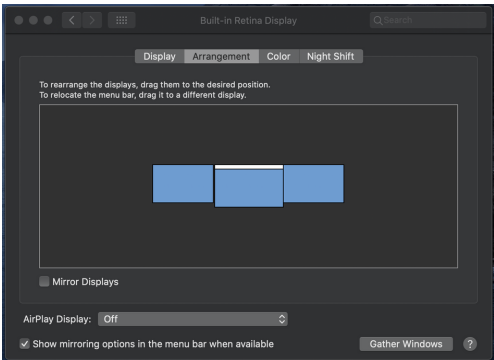
Multiple displays

Multiple displays

Laptop Display Configuration (Mac)

MAC

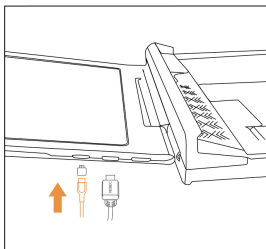
1. Open Displays Settings ( > System Preferences > Displays)
2. Click "Arrangement" from display menu
3. Ensure that the "Mirror Displays" box is unchecked
4. Click each monitor icon and note on which of your screens a red frame appears
5. Click and drag the screen icons so that they are on the same side as the associated screens with a red frame
6. To increase the zoom, click the "Scaled" radio button, and select "1280 x 800" from the dropdown menu, or preferred zoom



Customize Your Tri-Screen 2

PASS-THROUGH CHARGING

If your laptop charging port is a USB-C port that you are using to connect your Tri-Screen 2, you can still charge your laptop by using our pass-through charging feature. Just plug your laptop's power cable into the Xebec USB-C 90-Degree Pass-Through Charging Adapter and then into the one of the Tri-Screen 2's USB-C inputs.

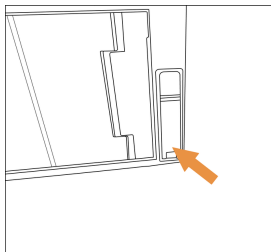
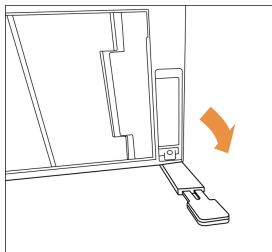


Kickstand

BUILT-IN KICKSTAND FOR EVERYDAY USE

To provide a little extra screen support, an extendable kickstand is built in to the back of your Tri-Screen 2. Simply pull down the kickstand and extend the foot to the desired length.

When you're done, push the foot back in, lift the kickstand into the slot, and press just above the bottom hinge to "click" it back into place.



Tech Specs

DISPLAY

- Two 10.1 inch (diagonal) 1920 x 1200, Full HD LCD IPS panels
- 16:10 aspect ratio
- 60hz refresh rate
- 180-degree screen rotation
- Adjustable brightness
- Power consumption: 5V 2A (per screen)

INPUTS AND CONNECTIVITY (PER SCREEN)

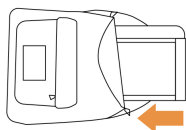
- 2 x USB-C with DP inputs
 - Video and Power
 - Pass-through charging
- Mini-HDMI input
 - Video only

SIZE AND WEIGHT

- Weight: 2 pounds
- Depth: 1 inch
- Height: 7.5 inches
- Width: 12 inches

Pack Up and Go

Leave it on or pack it separately, the choice is yours!



LEAVE IT ON (RECOMMENDED)

For the most convenience, simply unplug the cables, slide the screens in, shut your laptop, and pack everything up together.

Tight on space? Unplug the cables, slide the screens in, take off the Tri-Screen 2, and pack it up separately.

Additional Help

Have more questions? Scan the QR code to access our Support Center at www.thexebec.com/troubleshoot



Need more support? Contact us at contact@thexebec.com

Want to be featured? Tag us on social media with your favorite shot using the Xebec Tri-Screen 2! Use the hashtags [#Xebec](#) and [#FreeYourself](#)



@thexebec



@thexebec



@thexebec



@my_xebec

Product Safety

GENERAL SAFETY AND HANDLING

Carefully review each step in this user manual as well as the online documentation before setting up your Xebec Tri-Screen 2. Use the provided cables and accessories as directed in this manual to avoid damaging the product. Using third party cables may cause damage to your laptop.

If any part is broken or damaged, do not attempt to fix yourself as this will void your warranty. Instead, please contact the retailer, or email us at contact@thexebec.com. Refer to the warranty on page 13 for additional details.

Store the Xebec Tri-Screen 2 in appropriate conditions, avoiding exposure to moisture, dust, and extreme heat or cold. We recommend you remove the cables from the inputs on the Xebec Tri-Screen 2 before storing to avoid damaging the inputs or cables. Please use caution when storing the Xebec Tri-Screen 2 and avoid putting excessive amounts of pressure or weight on the product.

In the event that there is any liquid spilled on the Xebec Tri-Screen 2, unplug all the cables immediately and dry the entire product off with a dry soft towel. Wait for it to dry entirely before using again. To avoid an electric shock, unplug all the cables before cleaning the screens. Only clean with a soft, dry, lint-free cloth.

CHOKING HAZARD

The Xebec Tri-Screen 2 and its accessories contain small parts that may present a choking hazard. Please keep out of reach from small children.

FCC Compliance

This part complies with Part 15 of the FCC Rules. Operation is subject to the following two conditions:

- (1) this device may not cause harmful interference
- (2) this device must accept any interference received, including interference that may cause undesired operation

This device has been tested and found to comply with the limits for a Class B digital device pursuant to Part 15 of the FCC Rules. These limits are designed to provide reasonable protection against harmful interference in a residential installation.

This device generates, uses, and can radiate radio frequency energy and, if not installed and used in accordance with the instructions, may cause harmful interference to radio communications. However, there is no guarantee that interference will not occur in a particular installation. If this device does cause harmful interference to radio or television reception, which can be determined by turning the device off and on, the user is encouraged to try to correct the interference by one or more of the following measures:

- Reorient or relocate the receiving antenna
- Increase the separation between the device and receiver
- Connect the device into an outlet on a circuit different from that to which the receiver is connected
- Consult the dealer or an experienced radio/television technician for help

Warranty

This Limited Warranty gives You specific legal rights, and You may have other rights which vary from country to country or state to state. The Limited Warranty can also be found online at www.thexebec.com.

We warrant that during the warranty period, the Product (as defined below) will be free from defects in manufacturing, materials and workmanship under normal use for the Warranty Period (as defined below), subject to conditions contained in this limited warranty. We do not warrant, and are not responsible for, any laptop or other device made by anyone other than Xebec, Inc. We limit the duration and remedies of all implied warranties, including without limitation the warranties of merchantability and fitness for a particular purpose to the duration of this express limited warranty.

Who May Use This Warranty?

Xebec, Inc. ("We", "Xebec" or "Us") extend this limited warranty only to the consumer who originally purchased the Product ("You") from us or a Xebec-authorized dealer, unless otherwise prohibited by law. This Limited Warranty is extended only to the original end-use customer, and will not be extended to any other person or transferee.

What Does This Warranty Cover?

This Limited Warranty covers any defects in manufacturing, material or workmanship in the Product under normal use for the Warranty Period, subject to conditions contained in this limited warranty. During the Warranty Period, We will repair or replace, at no charge, Products or parts of a Product that prove defective because of improper manufacturing, material or workmanship.

How Long Does The Coverage Last?

The Warranty Period is 1 year from the original date of purchase of the Product.

Sole and Exclusive Remedy; What Will We Do to Correct the Problem?

If a manufacturing, material or workmanship defect arises regarding any Product, and We receive a valid claim no later than fifteen (15) calendar days after the expiration of the Warranty Period, We will, at our sole option, provide one of the following remedies to satisfy a proper claim under this limited warranty:

Repair or replace any defective or malfunctioning part at no charge, using new or refurbished replacement parts.

Replace this product with a new Xebec Tri-Screen (the "Product") at no charge.

For purposes of this Limited Warranty, "refurbished" means a product or part that has been substantially returned to its original specifications. In the event of a defect, these are customer's sole and exclusive remedies.

Exclusions and Limitations; What Does the Warranty Not Cover?

Except for the remedies expressly set forth above or to the extent restricted or prohibited by applicable law, the entire risk as to the quality and performance of the Products is with the customer, and the customer assumes the entire cost of repair should the Products prove defective following their purchase. In addition to and without limiting the generality of the foregoing disclaimers, this Limited Warranty does not, under any circumstances, cover any defects or damage due to: (a) transportation; (b) storage; (c) improper or unreasonable use or maintenance; (d) failure to follow the product instructions; (e) modifications; (f) unauthorized repair; (g) normal wear and tear or otherwise due to the normal aging of the Product; (h) cosmetic damage, including but not limited to scratches, dents and broken plastic or screen unless failure has occurred due to a defect in manufacturing, materials or workmanship; (i) damages caused by use with non-Xebec products; or (j) external causes such as accidents, abuse, or other actions or events beyond our reasonable control.

If this product is returned to Xebec, Inc., this product must be insured during shipment, with the insurance and shipping charges prepaid by you. If this product is returned uninsured, you assume all risks of loss or damage during shipment.

FOR CUSTOMERS WHO ARE COVERED BY AN APPLICABLE CONSUMER PROTECTION LAW OR REGULATION IN THEIR STATE, PROVINCE, OR COUNTRY OF PURCHASE OR RESIDENCE, THE BENEFITS TO CUSTOMER UNDER THIS LIMITED WARRANTY ARE IN ADDITION TO OTHER RIGHTS AND REMEDIES OF CUSTOMER UNDER SUCH LAWS OR REGULATIONS. SUCH BENEFITS MAY INCLUDE ADDITIONAL WARRANTIES OR RIGHTS RELATING TO THE PERFORMANCE OF THE PRODUCT AND REMEDIES APPLICABLE IN THE EVENT OF A DEFECT. THIS LIMITED WARRANTY WILL BE INTERPRETED UNDER THE LAWS OR REGULATIONS THAT APPLY TO CUSTOMER IN ANY STATE, PROVINCE, OR COUNTRY, AND ANY PROVISION OF THIS LIMITED WARRANTY THAT CONFLICTS WITH ANY SUCH CUSTOMER RIGHTS OR BENEFITS IS NOT APPLICABLE TO CUSTOMERS COVERED BY SUCH LAW OR REGULATION, SO THE EXCLUSIONS AND LIMITATIONS SET OUT IN THIS LIMITED WARRANTY MAY NOT APPLY, OR MAY NOT FULLY APPLY, TO CUSTOMER.

Warranty Disclaimers

EXCEPT AS EXPRESSLY SET FORTH ABOVE, EACH PRODUCT IS PROVIDED SOLELY ON AN "AS IS" BASIS AND WE MAKE NO OTHER WARRANTIES OF ANY KIND. TO THE MAXIMUM EXTENT PERMITTED BY APPLICABLE LAW, WE SPECIFICALLY DISCLAIM AND EXCLUDE ALL OTHER WARRANTIES, WHETHER EXPRESS, IMPLIED OR STATUTORY, INCLUDING, WITHOUT LIMITATION, ANY IMPLIED WARRANTIES OF NON-INFRINGEMENT, QUIET ENJOYMENT, MERCHANTABILITY OR FITNESS FOR A PARTICULAR PURPOSE. IF SUCH DISCLAIMER OF ANY IMPLIED WARRANTY IS NOT PERMITTED BY LAW, THE DURATION OF SUCH IMPLIED WARRANTY IS LIMITED TO THE DURATION OF THE WARRANTY PERIOD APPLICABLE TO THE PRODUCT AS SET FORTH ABOVE. SOME STATES, PROVINCES AND COUNTRIES DO NOT ALLOW LIMITATIONS ON HOW LONG AN IMPLIED WARRANTY LASTS, SO THE ABOVE LIMITATION MAY NOT APPLY TO CUSTOMER. IF APPLICABLE LAW SPECIFIES A MINIMUM WARRANTY PERIOD THAT IS LONGER THAN THE APPLICABLE WARRANTY PERIOD SET FORTH IN THIS LIMITED WARRANTY, THEN THE APPLICABLE WARRANTY PERIOD FOR PRODUCTS SUBJECT TO SUCH APPLICABLE LAW WILL BE CONFORMED TO THE MINIMUM PERIOD SO REQUIRED. THIS LIMITED WARRANTY GIVES CUSTOMER SPECIFIC LEGAL RIGHTS AND CUSTOMER MAY ALSO HAVE OTHER RIGHTS WHICH VARY FROM STATE TO STATE AND PROVINCE TO PROVINCE AND FROM COUNTRY TO COUNTRY.

Limitation of Liability

IN NO EVENT, UNDER ANY CAUSE OF ACTION OR THEORY OF LIABILITY, WILL WE, OUR DISTRIBUTORS, OR SUPPLIERS BE LIABLE TO CUSTOMER OR ANY THIRD PARTY FOR ANY INDIRECT, INCIDENTAL, CONSEQUENTIAL, SPECIAL, EXEMPLARY OR PUNITIVE DAMAGES, OF ANY NATURE WHATSOEVER, ARISING OUT OF THE USE OF OR INABILITY TO USE ANY PRODUCT, INCLUDING, WITHOUT LIMITATION, PROPERTY DAMAGE, LOSS OF VALUE OF THE PRODUCT OR ANY THIRD PARTY PRODUCTS THAT ARE USED IN OR WITH THE PRODUCT, OR LOSS OF USE OF THE PRODUCT OR ANY THIRD PARTY PRODUCTS THAT ARE USED IN OR WITH THE PRODUCT, EVEN IF WE HAVE BEEN ADVISED OF THE POSSIBILITY OF SUCH DAMAGES. WITHOUT LIMITING THE FOREGOING, CUSTOMER UNDERSTANDS AND AGREES THAT WE HAVE NO LIABILITY FOR ANY DAMAGE OR DESTRUCTION TO CUSTOMER ELECTRONICS DEVICES OR OTHER PERSONAL PROPERTY THAT ARE USED WITH THE PRODUCT, INCLUDING, WITHOUT LIMITATION, LAPTOPS, OR OTHER HANDHELD DEVICES, OR ANY LOSS OF DATA CONTAINED IN THE FOREGOING DEVICES. NOTWITHSTANDING ANY DAMAGES THAT CUSTOMER MIGHT INCUR FOR ANY REASON WHATSOEVER (INCLUDING, WITHOUT LIMITATION, ALL DAMAGES REFERENCED HEREIN AND ALL DIRECT OR GENERAL DAMAGES IN CONTRACT, TORT (INCLUDING NEGLIGENCE) OR OTHERWISE), THE ENTIRE AGGREGATE LIABILITY OF XEBEC AND ANY OF ITS DISTRIBUTORS AND/OR SUPPLIERS WILL BE LIMITED TO THE AMOUNT ACTUALLY PAID BY CUSTOMER FOR ANY PRODUCT GIVING RISE TO LIABILITY. SOME STATES, PROVINCES, COUNTRIES DO NOT ALLOW THE EXCLUSION OR LIMITATION OF INCIDENTAL OR CONSEQUENTIAL DAMAGES, SO THE ABOVE LIMITATION OR EXCLUSION MAY NOT APPLY TO CUSTOMER. THE LIMITATIONS OF LIABILITY SET FORTH ABOVE WILL APPLY TO THE MAXIMUM EXTENT PERMITTED UNDER APPLICABLE LAW.

How Do You Obtain Service?

You must email our Customer Service Department at contact@thexebec.com during the Warranty Period and provide:

- Your name
- Order number
- Brief written description of the problem

In order to pursue any remedy under this Limited Warranty, you must possess an original, dated receipt as proof of purchase. This product should be properly packed, preferably in the original package, for shipping.