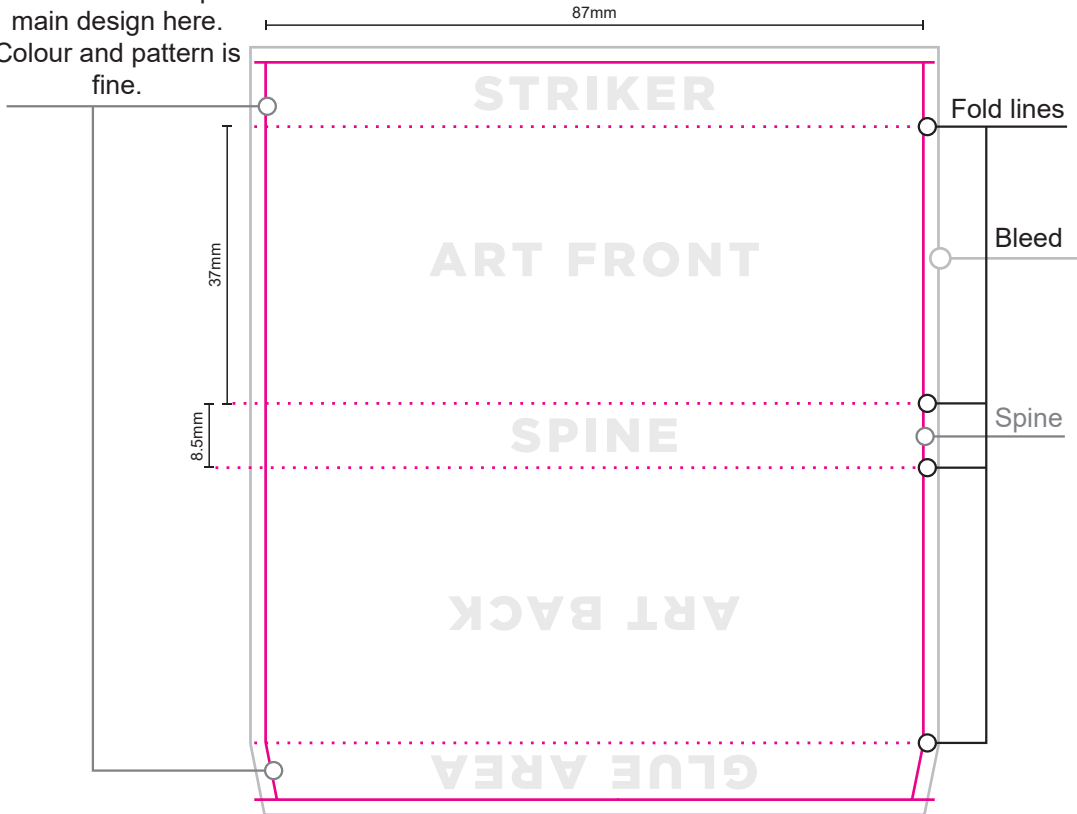


# COCREATIVE DESIGN LONG STEM MATCHBOX DIE

Fold area do not put  
main design here.  
Colour and pattern is  
fine.



● pink die line - Die line won't print

Note: The design wraps the front, back and one side/spine.  
The other side/spine has the 'striker' paper to light the matches.

This file has layers and is designed for use with Adobe Illustrator. Create art on the 'Art' layer. If you need our design services contact [production@cocreatedesign.com.au](mailto:production@cocreatedesign.com.au)

All images to be embedded, fonts to be outlined. CMYK print. Upload this file when ordering or email over after with your order number.

For orders over 2000+ units only:

All areas within the pink die can be printed (including behind the striker paper).

Pantone colours cost extra and are available on bulk orders 2000+ units only.