

# L3.0

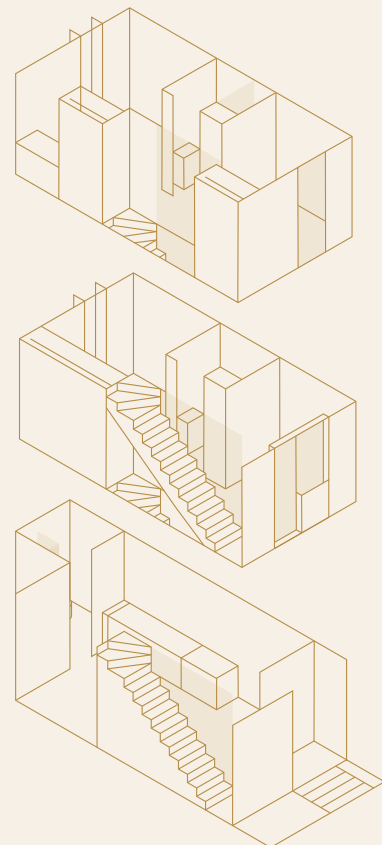
**Disclaimer:**

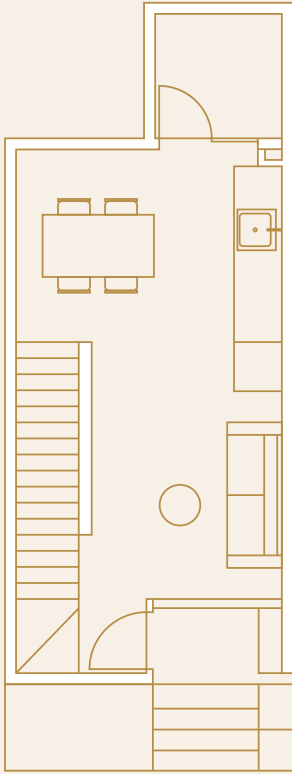
The specifications, illustrations, perspectives and information set out in this document are indicative only, subject to change and do not form part of any sale agreement. Whilst all reasonable care has been taken in the preparation of this document, the vendor or and its associates do not guarantee the accuracy of the information contained within it. All typology Gross Floor Areas (GFA's) are inclusive of internal and external areas including living, decks, sky gardens and porches.

Where there are any discrepancies or conflict between the information and/ or descriptions contained in this document and the form of sale agreement, the sale agreement form shall prevail.

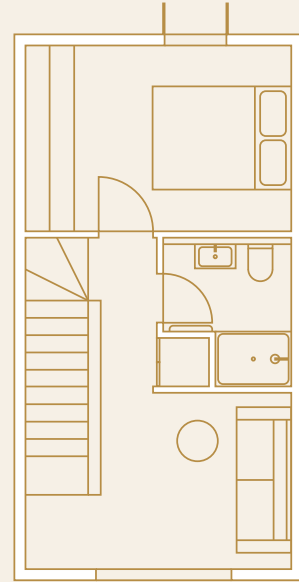
The Live 3.0 terrace offers three-bedrooms, two-bathrooms and a separate media room or flexible living space. With ground floor open-plan living for entertaining or simply some family time, the generous spaces will provide something for everyone and presents a unique inner city living option for a wide range of buyers.

The L3.0 is perfect for the modern family or astute investor seeking to maximise an inner-city rental return.

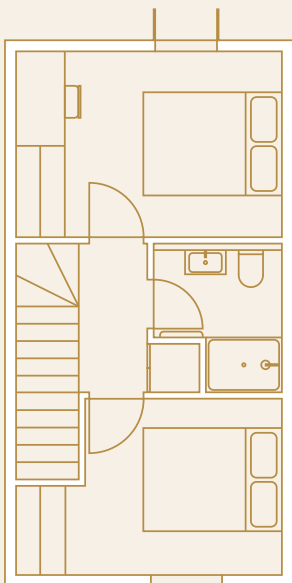




Ground



Level 1



Level 2