

L2.5

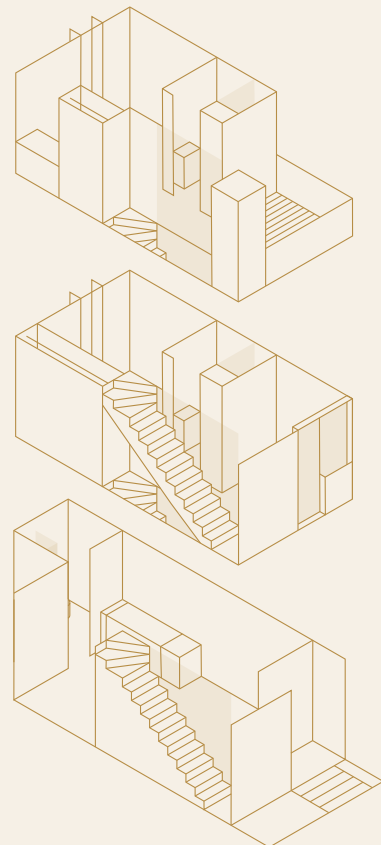
Disclaimer:

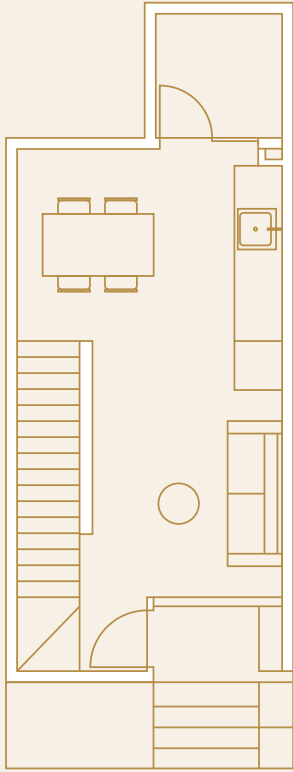
The specifications, illustrations, perspectives and information set out in this document are indicative only, subject to change and do not form part of any sale agreement. Whilst all reasonable care has been taken in the preparation of this document, the vendor or and its associates do not guarantee the accuracy of the information contained within it. All typology Gross Floor Areas (GFA's) are inclusive of internal and external areas including living, decks, sky gardens and porches.

Where there are any discrepancies or conflict between the information and/ or descriptions contained in this document and the form of sale agreement, the sale agreement form shall prevail.

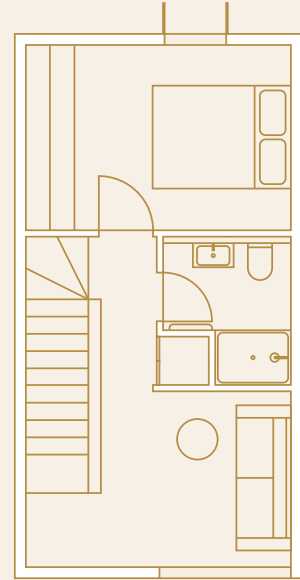
The Live 2.5 terrace provides two-bedrooms and two-bathrooms, a separate media room or flexible living space and a roof-top terrace for relaxing or entertaining: split over two levels separated by an architectural air stair.

With ground floor open plan living and a rear private courtyard, the L2.5 provides an ideal downsizers or small family home in the heart of Wellington's Te Aro.

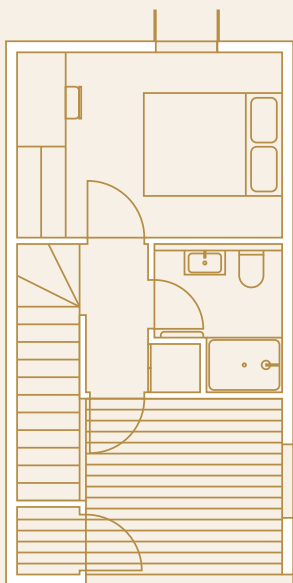




Ground



Level 1



Level 2