



**TOTAL  
COMPOSITES**

**TRUCK BOX**

**INTERIOR OUTFITTING  
GUIDE**

## Guidelines for Interior Outfitting

The following instructions demonstrate how to outfit the interior of your Total Composites truck box shell.

Please don't hesitate to contact us if you have any questions. We are here to help.

Contact:

Total Composites

Direct line: 250-477-0375

Email: [support@totalcomposites.com](mailto:support@totalcomposites.com)

**Total Composites will not be responsible for injuries, defects, road testing and modifications that are not authorized. Common sense and manufacturing skills are required.**

### Materials

- Koemmerling Korapop Adhesive
- Fiberglass Honeycomb panels
- PVC Trim available from Home Depot

### Step by Step guide:

1. Cut out the fiberglass honeycomb panels for the desired size of compartments. Make sure to cut the edges to fit extrusion like shown in the photo below.

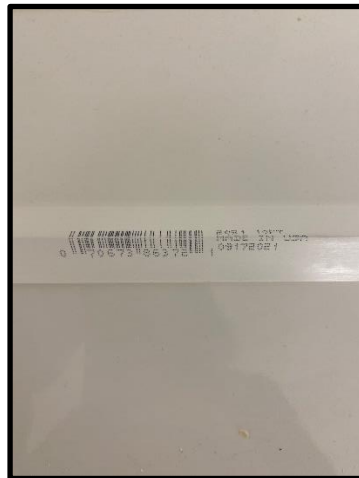
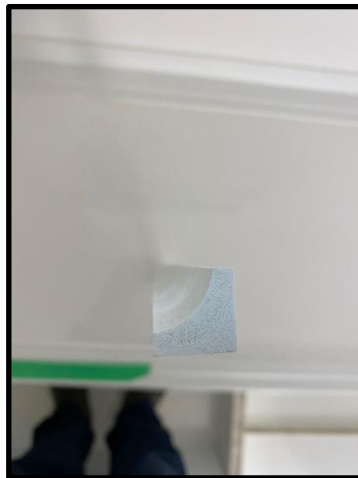


2. Before gluing panels in place make sure to clean areas with denatured alcohol and a clean rag.

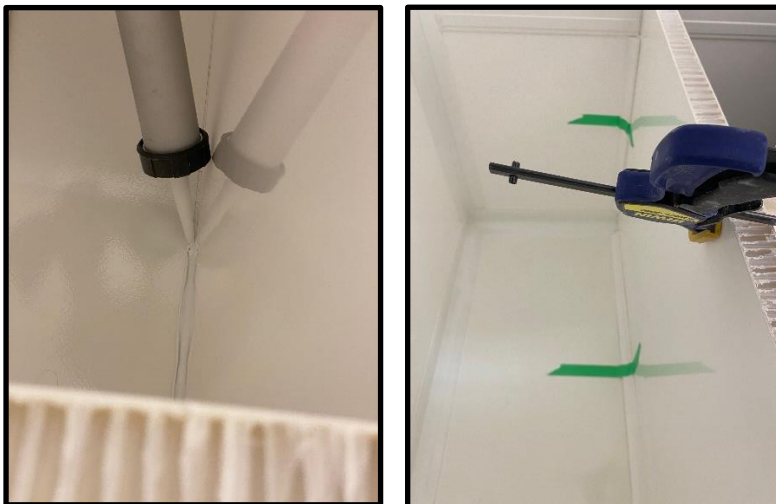
3. Use a plywood jig and clamp to ensure the panel is installed square and in the correct place.



4. We recommend the use of Koemerling Korapop adhesive to secure the panels into place. We also recommend using PVC trim (available from Home Depot). The trim serves as an extra reinforcement for holding the panel in place. We only use it on the inside of the compartments so that it is not visible.



5. Glue should be applied on all edges and corners with the panel in place. We recommend using extra glue where the trim will be placed. Tape is also useful to secure the trim in place.



6. To clean up the glued seams we recommend spraying the area with soapy water and then using a plastic squeegee to make the seam look pretty.

