



**TOTAL
COMPOSITES**

**SOLAR SYSTEM
INSTALLATION GUIDE**

Guidelines for Solar Panel Installations

The following instructions demonstrate how to install a solar panel and route the wires on your Total Composites truck box shell.

Please don't hesitate to contact us if you have any questions. We are here to help.

Contact:

Total Composites

Direct line: 250-477-0375

Email: support@totalcomposites.com

Total Composites will not be responsible for injuries, defects, road testing and modifications that are not authorized. Common sense and manufacturing skills are required.

Rigid Panel Roof Installation

A rigid solar panel can be glued directly to the roof using Koemmerling Korapop Adhesive and plastic drill free mounting brackets.

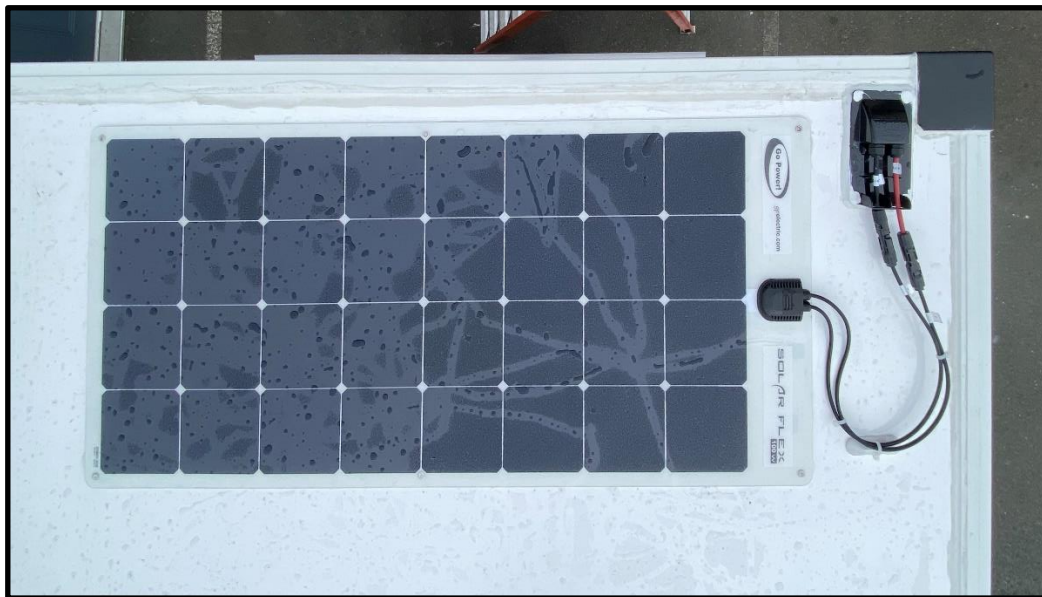


The plastic drill free mounting brackets can be purchased from amazon. Make sure to lightly sand the mounting bracket and the area on the roof panel that the mounting bracket will sit. Before gluing, clean all surfaces with solvable methyl hydrate and a clean rag.



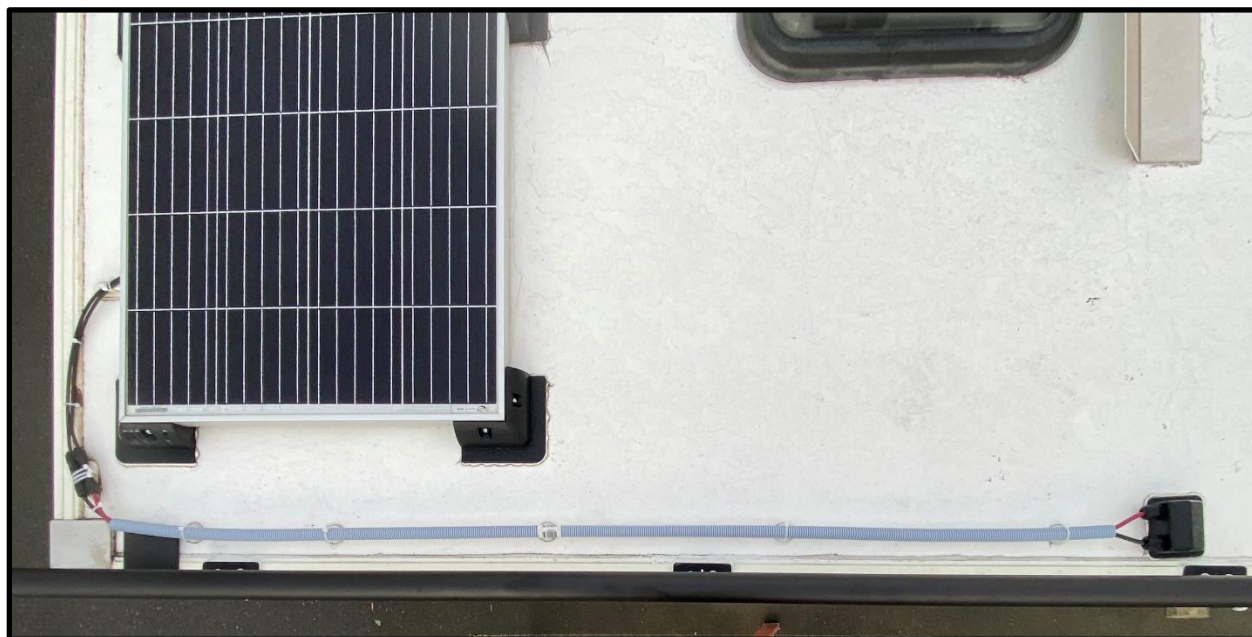
Flexible Panel Installation

Flexible solar panels can be installed by gluing the panel directly to the roof. Clean the surface of the roof and panel using solvable methyl hydrate and a clean rag. Apply glue along all edges of the panel and 5 lines of glue through the center part.

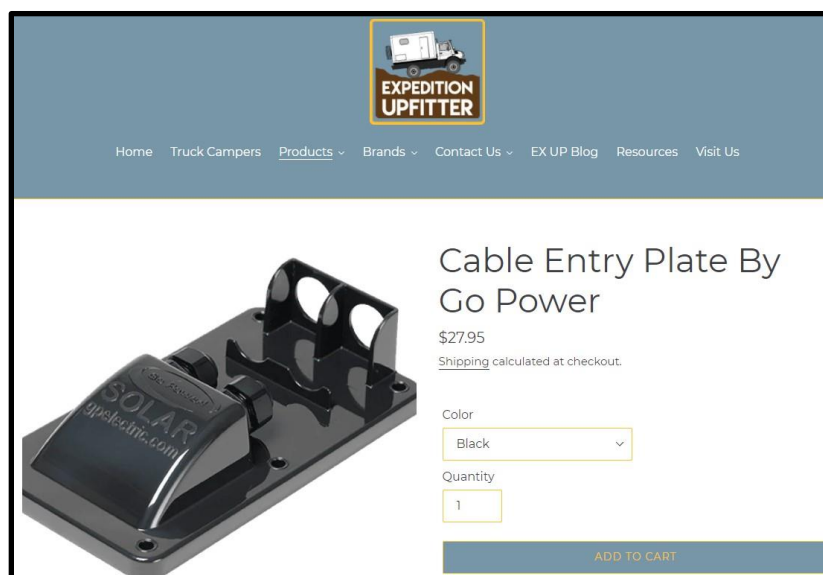


Routing the Solar Panel Wires

The solar panels will have 2 wires that need to be brought into the inside of the camper. This means drilling into the composite roof panel. We recommend bringing the wires down in an area where you will have a cabinet so that you can easily hide them on the inside.



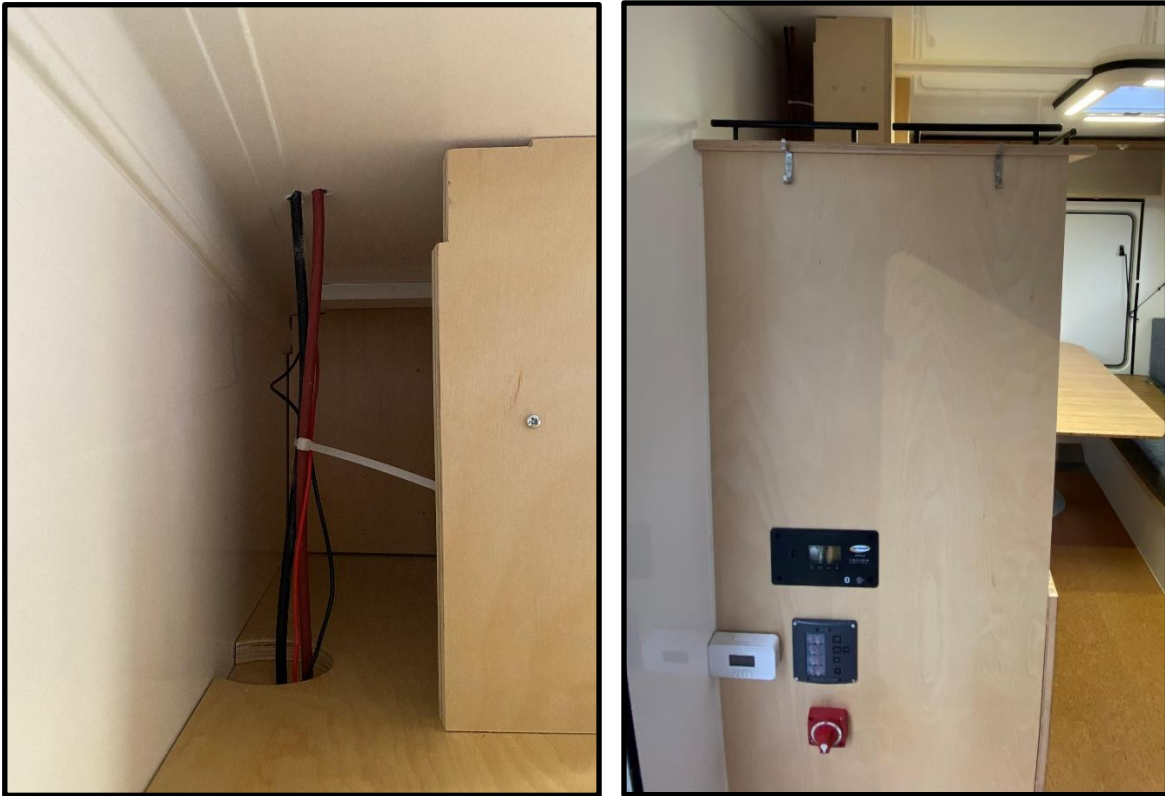
Using a cable entry plate like the one available for purchase off the Expedition Upfitter website the wires are brought down through the roof. The cable entry plate ensures a watertight seal.



The cable plate is glued to the roof using Koemmerling Korapop Adhesive. Mark out where the entry plate will be mounted and ensure that it will **NOT** be placed on the fiberglass extrusion edge pieces. Make sure to sand surfaces that will be glued. Before gluing use solvable methyl hydrate and a clean rag to clean surfaces.



The solar wires will come down through the roof like in the photo below. We built a small wood box above the cabinet that can slide flush to the wall to hide the wires.



We routed the wires down to the solar controller, switches, and battery disconnect that are mounted on the side of the cabinet. The photos below show the interior of the cabinet and wires going to the battery.

