

UNIGRIPPER CO/LIGHT

INTELLIGENT VACUUM FOR
COLLABORATIVE ROBOTS

CO/LIGHT REGULAR

Co/Light Regular comes in two valve pitches, cc 15/15 enabling handling of very small objects and objects with high porosity, and cc 30/30 for larger objects like boxes.



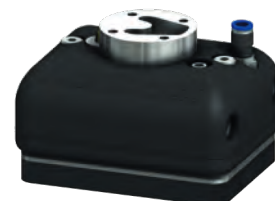
Technical Data Co/Light Regular		
Valve pitch	15/15 mm	30/30 mm NEW!
Length	265 mm	
Width	150 mm	
Height	101 mm	
Weight	App. 1.8 kg	
Air consumption	420 NI/min	105 NI/min
Robot connection	4xM6, Ø50 mm	

Technical Data Co/Light Mini

Valve pitch	15/15 mm
Length	150 mm
Width	112 mm
Height	101 mm
Weight	App. 900 g
Air consumption	210 NI/min
Robot connection	4xM6, Ø50 mm

CO/LIGHT MINI

Co/Light Mini is a smaller version of the Co/Light with the same popular design but with lower air consumption, even lower weight and smaller footprint.



CO/LIGHT MAXI

NEW! Co/Light Maxi gives more than 2.4x lifting area compared to the Co/Light Regular, enabling handling of larger work pieces, like large and relatively heavy boxes.



Technical Data Co/Light Maxi

Valve pitch	20/20 mm	30/30 mm
Length	360 mm	
Width	270 mm	
Height	101 mm	
Weight	App. 3.8 kg	App. 3.7 kg
Air consumption	630 NI/min	315 NI/min
Robot connection	4xM6, Ø50 mm	



UNIGRIPPER CONTROL BOX

The UniGripper Control Box combines a pneumatic valve for vacuum control and a vacuum switch for grip indication. The neatly designed box is easy to integrate and no other pneumatic components are needed for the installation.

www.unigripper.com

Tepro Machine & Pac System AB
Vinkelvägen 10, 685 34, Torsby, Sverige
Tel. +46 (0)560-272 70