

YAPAR YPT25

 Lifting365

YAPAR YPT25 Manual Hand Pallet Truck is the latest product ring of **YAPARLAR**'s 75 years of manufacturing experience.

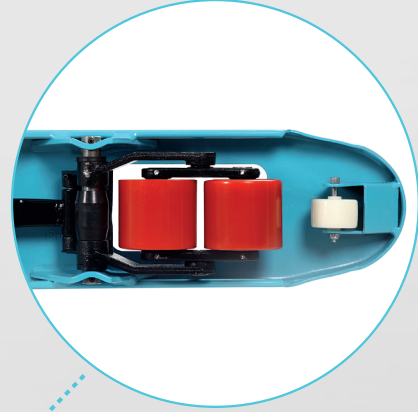
The pallet truck offers a solid design with a fully automatic robot welding chassis, lead to consistent production and longer usage time. With the standard reinforcing stiffeners under forks, **YAPAR YPT25** is the combination of well designed structure and quality.

The ergonomic handle provides a comfortable drive and the anti-slippery coverage offers safety during usage.

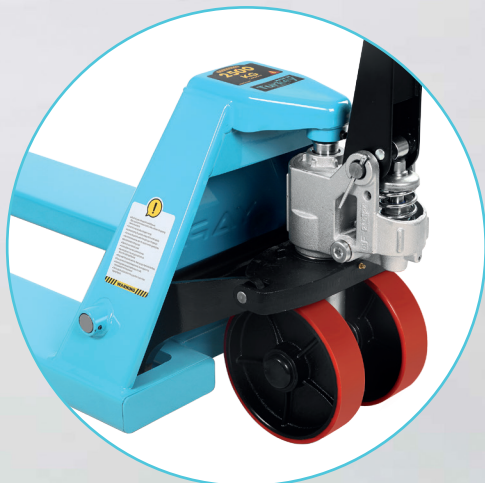
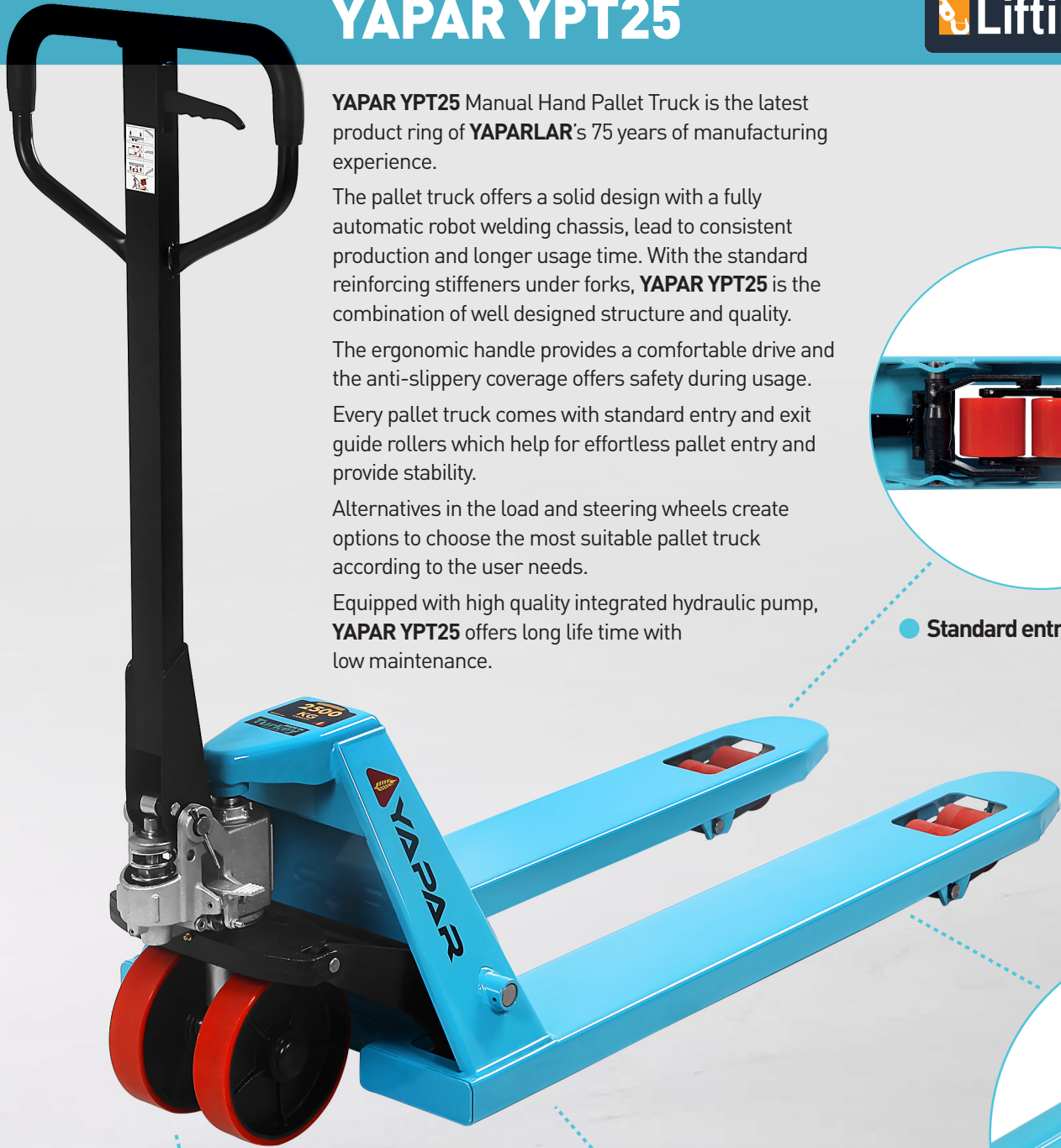
Every pallet truck comes with standard entry and exit guide rollers which help for effortless pallet entry and provide stability.

Alternatives in the load and steering wheels create options to choose the most suitable pallet truck according to the user needs.

Equipped with high quality integrated hydraulic pump, **YAPAR YPT25** offers long life time with low maintenance.



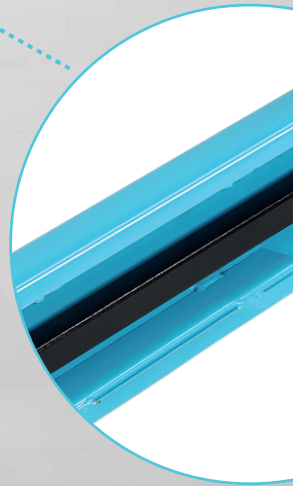
● Standard entry/exit rollers



● Leak-proof and reliable hydraulic pump



● Fully automated robot welding chassis





● Reinforcing stiffeners under forks



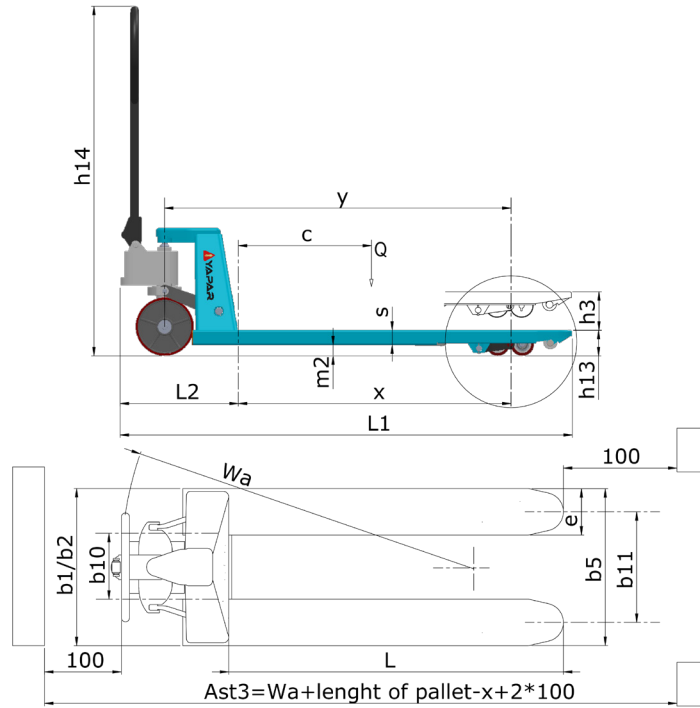
● Long lasting high quality wheels



● Ergonomic and comfortable handle with anti-slippery coverage



● Strong chassis design



VDI 2198

DESCRIPTION			
1.2 MODEL			YPT25
1.3 DRIVE			MANUAL
1.4 OPERATOR TYPE			PEDESTRIAN
1.5 LOAD CAPACITY	Q	kg	2500
1.6 LOAD CENTRE DISTANCE	c	mm	600
1.8 LOAD DISTANCE, CENTRE OF DRIVE AXLE TO FORK	x	mm	942
1.9 WHEEL BASE	y	mm	1188
WEIGHTS			
2.1 SERVICE WEIGHT		kg	74,75
2.2 AXLE LOAD LADED, FRONT/REAR		kg	742/1833
2.3 AXLE LOAD UNLADEN, FRONT/REAR		kg	51/24
TYRES/CHASSIS			
3.1 TYRES*			P/N
3.2 TYRE SIZE, FRONT (Ø x width)			Ø200x50 - Ø180x50
3.3 TYRE SIZE, REAR (Ø x width)			Ø80x90 - Ø80x70
3.5 WHEELS, NUMBER (x=DRIVEN) FRONT/REAR	b10	mm	2/4 - 2/2
3.6 TREAD, FRONT	b11	mm	128
3.7 TREAD, REAR			380
DIMENSIONS			
4.4 LIFT	h3	mm	115
4.9 HEIGHT OF TILLER IN DRIVE POSITION MIN/MAX	h14	mm	600/1225
4.15 HEIGHT, LOWERED	h13	mm	85
4.19 OVERALL LENGTH	l1	mm	1550
4.20 LENGHT TO FACE OF FORKS	l2	mm	400
4.21 OVERALL WIDTH	b1	mm	540
4.22 FORK DIMENSIONS	s/e/l	mm	50/160/1150
4.25 DISTANCE BETWEEN FORK ARMS	b5	mm	540
4.32 GROUND CLEARANCE, CENTRE OF WHEEL BASE	m2	mm	35
4.34 AISLE WIDTH FOR PALLETS 800x1200 LENGHTWISE	Ast	mm	1805
4.35 TURNING RADIUS	Wa	mm	1347
PERFORMANCE DATA			
5.1 TRAVEL SPEED, LADEN/UNLADEN		m/s	4/4,50
5.3 LOWERING SPEED, LADEN/UNLADEN		m/s	0,06/0,02

*P=Polyurethane; N=Nylon

YPT25 ALTERNATIVES

MODEL	FORK LENGTH (mm)	OVERALL WIDTH (mm)	OVERALL LENGTH (mm)	SERVICE WEIGHT (kg)*
YPT25	600	540	1000	49 - 58
	800	540	1200	53 - 62
	1000	540	1400	59 - 68
	1150	540	1550	63 - 72
	1150	685**	1550	**
	1220**	540	1620	**
	1500**	540	1900	**

Capacity : 2500 kg

Height Lowered : 85 mm

Lift Height : 115 mm

Ground Clearance : 35 mm

Tyre Types : PU - Nylon - Rubber**

Steering Wheels : Ø200 x 50 - Ø180 x 50

Load Wheels : Ø80 x 70 - 80 x 90

Wheel # Steer/Load : 2/4 - 2/2

* Service Weight depends on the wheel type requested

** Released soon



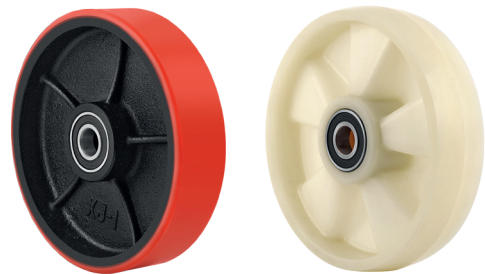
Tandem or Single Load Wheels

Alternative steering and load wheels

Polyurethane or Nylon steering wheels

Alternative sizes:

- Ø200x50
- Ø180x50



Polyurethane or Nylon load wheels

Alternative sizes:

- Ø80x70
- Ø80x90





Founded in 1947, **YAPARLAR** is the industry leader in the construction and agriculture hand tools sector. For 75 years, **YAPARLAR** has been committed to produce the highest quality tools and operate at the highest international standards.

YAPARLAR is expanding it's product range in the material handling equipment sector. The Company applies the same core values and high industry standards in this new sector through offering of various hand trolleys and hand pallet trucks. **YAPAR YPT25** is one of the best well-designed equipment in this range.



Conforms to EN ISO3691-5
Based on Directive 2006/42/EC

ISO 9001
ISO 14001
ISO 45001

