

Electric travel trolley VTE-U

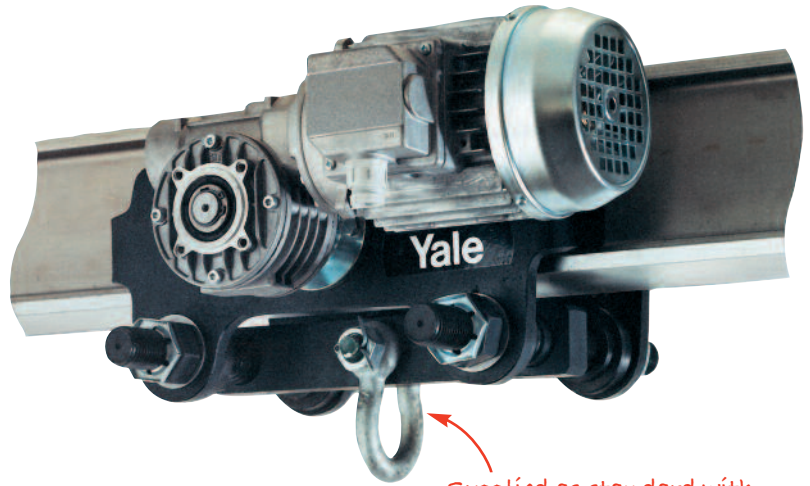
Capacities: 1000 - 5000kg

Specially recommended for loads over 1000kgs, for transporting over long distances, and/or for frequent use. Suitable for almost all hoists with suspension hook, due to Yale's universal shackle connection.

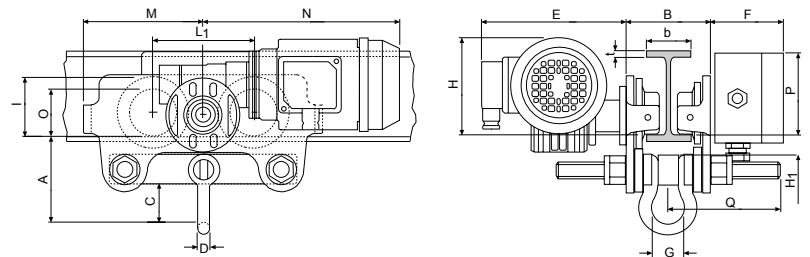
Travel motor with worm gear transmission ensures smooth start and self braking - a separate motor brake is not required.

Features include:

- Low voltage control 42v
- Standard operating voltage 400v 3ph 50Hz. (110v and 230v 1ph 50Hz trolleys are also available).
- Motors protected to IP 55 against dust and water jets. Push-button pendant control IP65.
- Compact, robust frame with low overall height.
- Wheels manufactured from fracture-proof steel. Smooth running due to machined surfaces and ball bearing mounting. Cambered wheel profile suitable for flat and inclined beam profiles.
- Anti-drop and anti tilt devices as standard.
- Easily adjustable to fit a wide range of beam widths and profiles via due to threaded load bars.
- Rubber buffers available as optional extra.
- Travel limit switches also available.



Supplied as standard with universal fitting



NOTE: These trolleys are not designed for passenger elevation applications and must not be used for this purpose!

Model	VTE 1-A-18/U	VTE 1-B-18/U	VTE 2-A-18/U	VTE 2-B-18/U	VTE 3-A-11/U	VTE 3-B-11/U	VTE 5-A-11/U	VTE 5-B-11/U
A, mm	113	113	115	115	139	139	161	161
B, mm	b + 50	b + 50	b + 54	b + 54	b + 60	b + 60	b + 70	b + 70
C, mm	49	49	47	47	57	57	60	60
D, mm	16	16	16	16	19	19	22	22
E, mm	187	187	187	187	202	202	202	202
F, mm	94	94	94	94	94	94	94	94
G, mm	43	43	43	43	51	51	58	58
H, mm	129	129	128	128	144	144	178	178
H1, mm	24	24	24	24	32	32	32	32
I, mm	77	77	98	98	133	133	149	149
L1, mm	130	130	150	150	180	180	209	209
M, mm	155	155	180	180	208	208	263	263
N 1 speed, mm	255	255	255	255	292	292	292	292
N 2 speed, mm	263	263	263	263	296	296	296	296
O, mm	60	60	80	80	112	112	125	125
P, mm	123	123	123	123	129	129	121	121
Q, mm	145	205	153	213	160	220	182	242

Model	Capacity (WLL) kg	Travel speed m/min	Motor kW	Beam width		Flange thickness mm	Min. curve radius		Weight without controls kg
				A mm	B mm		A mtr	B mtr	
VTE 1-A/B-18/U*	1000	18	0.18	58 - 180	180 - 300	19	0.90	0.90	19.5
VTE/F 1-A/B-18/U*	1000	18/4.5	0.18/0.06	58 - 180	180 - 300	19	0.90	0.90	25.2
VTE 2-A/B-18/U*	2000	18	0.18	58 - 180	180 - 300	19	1.15	1.15	26.0
VTE/F 2-A/B-18/U*	2000	18/4.5	0.18/0.06	58 - 180	180 - 300	19	1.15	1.15	30.2
VTE 3-A/B-11/U	3000	11	0.37	74 - 180	180 - 300	27	1.15	1.40	51.0
VTE/F 3-A/B-11/U	3000	11/2.8	0.3/0.09	74 - 180	180 - 300	27	1.15	1.40	53.0
VTE 5-A/B-11/U	5000	11	0.37	98 - 180	180 - 300	27	2.0	1.80	77.0
VTE/F 5-A/B-11/U	5000	11/2.8	0.3/0.09	98 - 180	180 - 300	27	2.0	1.80	80.0

*11 or 11/2.8 m/min travel speed available on request. • Low voltage control c/w 2mtr, 2 button, pendant. Range B prices are available on request.

***** 110v trolleys (up to 2 tonnes) available upon request. Please contact the sales team for details.