



Model LB,
zinc-plated version,
capacity 1200 kg



Model LB,
zinc-plated version,
capacity 350 kg

Console-mounted winch model LB

Capacity 150 - 1200 kg

Originally developed as offroad winch the console-mounted winch model LB is used today for a variety of lifting and pulling applications.

Features

- Light weight robust stamped steel housing.
- Spur gear drive for optimal efficiency and comfortable handling.
- Automatic load pressure brake for safe holding of the load in any position. An unintentional brake release is prevented.
- All parts are zinc-plated for increased corrosion protection, drum with additional special coating.
- Easy and quick mounting to consoles, even under lifting conditions.

Options

- Stainless steel version (mat. 1.4301) for increased corrosion protection.
- Free wheeling device for a quick manual unrolling of the unloaded rope.



Model LB-VA,
stainless steel version,
capacity 900 kg

Technical data model LB

| Model | EAN-No. 4025092* 4050939*** Zinc-plated version | EAN-No. 4025092* 4050939*** Free wheeling device | EAN-No. 4025092* 4050939*** Stainless steel version | Capacity 1 st layer kg | Capacity top layer kg | Rope diameter mm | Useable rope length 1 st layer m | Useable rope length top layer m | Lift per crank rotation mm | Required crank effort daN | Weight without rope kg |
|----------------|--|---|--|---|-----------------------------|------------------------|--|--|-------------------------------------|---------------------------------|---------------------------------|
| LB 150 VZ | ***050542 | - | - | 150 | 75 | 4 ² | 0.8 | 11 | 125 | 17 | 4.2 |
| LB 350 VZ | ***050559 | - | - | 350 | 170 | 4 ² | 1.8 | 20 | 125 | 25 | 4.8 |
| LB 650 VZ | *994736 | - | - | 650 | 290 | 6 ² | 1 | 20 | 55 | 22 | 7.3 |
| LB 900 VZ/ARA | *994859 | *992251 | - | 900 | 400 | 7 ² | 0.8 | 14 | 58 | 24 | 10 |
| LB 1200 VZ/ARA | *561655 | ***049249 | - | 1200 | 430 | 7 ³ | 1 | 26 | 45 | 24 | 12.1 |
| LB 250 VA | - | - | *441964 | 250 | 125 | 4 ² | 1.8 | 19.5 | 125 | 20 | 4.8 |
| LB 650 VA | - | - | *284875 | 650 | 290 | 6 ² | 1 | 20 | 55 | 22 | 7.6 |
| LB 900 VA | - | - | *562461 | 900 | 320 | 7 ² | 1 | 26 | 45 | 24 | 12.1 |

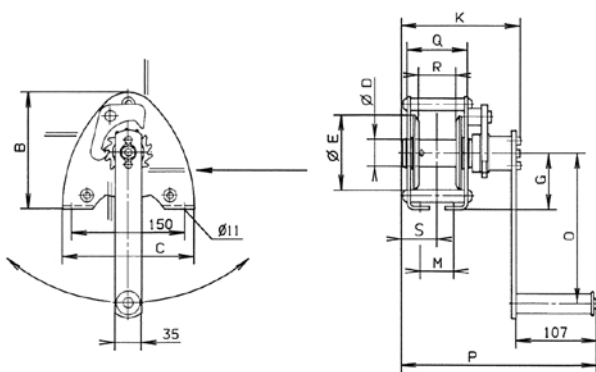
² recommended rope: DIN 3060 FE-znk 1770 sZ-spa

³ recommended rope: DIN 3069 SE-znk 2160 sZ-spa

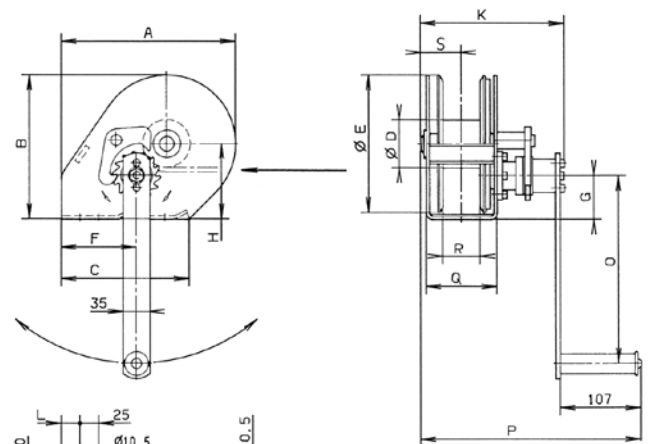
Dimensions model LB

| Model | LB 150 VZ | LB 350 VZ | LB 650 VZ | LB 900 VZ LB 900 ARA | LB 1200 VZ LB 1200 ARA | LB 250 VA | LB 650 VA | LB 900 VA |
|---------------------------------|-----------|-----------|-----------|-------------------------|---------------------------|-----------|-----------|-----------|
| EAN-No. Zinc-plated version | ***050542 | ***050559 | *994736 | *994859 | *561655 | - | - | - |
| EAN-No. Free wheeling device | - | - | - | *992251 | ***049249 | - | - | - |
| EAN-No. Stainless steel version | - | - | - | - | - | *441964 | *284875 | *562461 |
| A, mm | - | - | 232 | 232 | 273 | - | 232 | 273 |
| B, mm | 155 | 155 | 192 | 192 | 266 | 155 | 192 | 266 |
| C, mm | 175 | 175 | 210 | 210 | 240 | 175 | 210 | 240 |
| Ø D, mm | 36 | 36 | 63.5 | 63.5 | 63.5 | 36 | 63.5 | 63.5 |
| Ø E, mm | 100 | 100 | 183 | 183 | 255 | 100 | 183 | 255 |
| F, mm | - | - | 100 | 100 | 78 | - | 100 | 78 |
| G, mm | 75 | 75 | 58 | 58 | 75 | 75 | 58 | 75 |
| H, mm | - | - | 100 | 100 | 138 | - | 100 | 138 |
| K, mm | 159 | 189 | 192 | 192/226* | 192/226* | 191.5 | 190 | 190 |
| L, mm | - | - | 25 | 25 | 35 | - | 25 | 35 |
| M, mm | 45 | 75 | 38 | 38 | 30 | 75 | 38 | 30 |
| N, mm | - | - | - | - | 53 | - | - | 53 |
| O, mm | 200 | 320 | 250 | 320 | 320 | 320 | 250 | 250 |
| P, mm | 260 | 290 | 293 | 293/303* | 293/303* | 292.5 | 291 | 291 |
| Q, mm | 81 | 111 | 95 | 95 | 95 | 111 | 95 | 95 |
| R, mm | 50 | 80 | 50 | 50 | 50 | 80 | 50 | 50 |
| S, mm | 48 | 63 | 55 | 55 | 55 | 65.5 | 55 | 55 |

*Free wheeling device



Model LB 150 - 350 kg



Model LB 650 - 1200 kg