

## Throttle-/Shut-off valves model VHM

700 bar

These valves are used to shut-off hydraulic lines especially in multiple cylinder systems. The needle valve VHM-1 also allows to throttle an oil flow especially in connection with lifting applications.



VHM-2



VHM-1

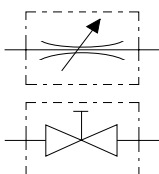
### Technical data model VHM

Model	EAN-No. 4025092*	Operating pressure max. bar	Control	Oil ports both ends	Width mm	Weight kg
VHM-1	*154819	700	Needle	3/8-NPT inner	6	0.4
VHM-2	*154963	700	Ball	3/8-NPT inner	6	0.9

### Dimensions model VHM

Model	VHM-1	VHM-2
Length, mm	75	75
Width, mm	28	45
Height, mm	100	75

Hydraulic symbol



## Pressure switch model VPS

Adjustable between 100 - 800 bar

As soon as the pressure has reached the set value, a micro-switch (altering contact) is activated.

This signal can be used:

- For automatic pressure limiting.
- To report a certain pressure value.
- As an automatic motor on/off switch with pressure guard power packs.



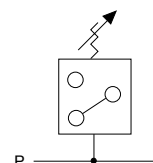
### Technical data model VPS

Model	EAN-No. 4025092*	Control range bar	Electric data	Oil ports	Difference of switch point bar	Repeat accuracy bar	Weight kg
VPS-1	*155090	100 - 800	5 A/250 V	3/8 NPT	25 - 70	10	0.5

### Dimensions model VPS

Model	VPS-1
Height x width, mm	130x85

Hydraulic symbol



As soon as the pressure has reached the set value, a micro-switch (alternating contact) is activated. Should the pressure drop, the micro-switch starts the pump again in order to rebuild the pressure.