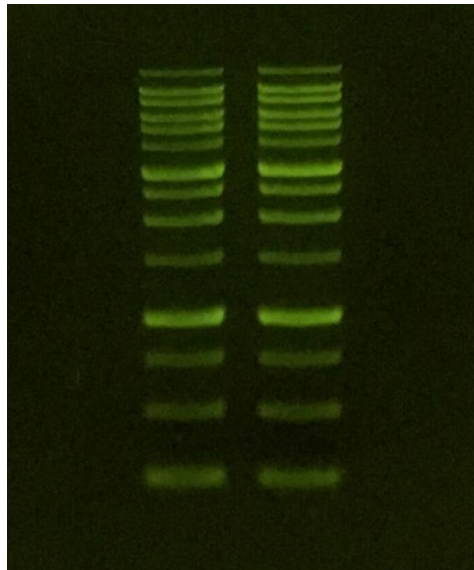


Below are gel images taken with an iPhone 6, using the Accuris SmartDoc with blue light illumination base and SmartDoc enclosure on UV transilluminator.

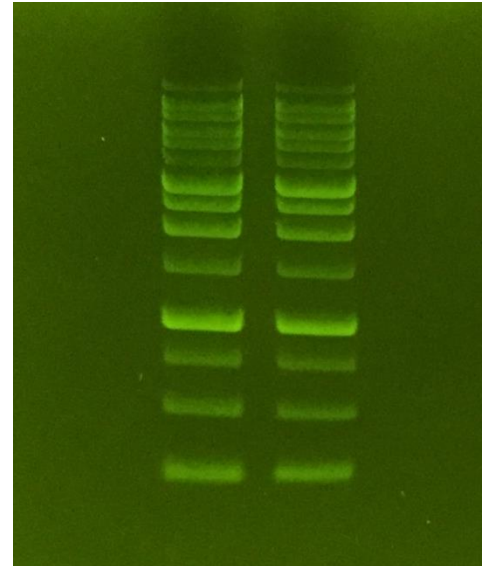
Electrophoresis details: 1.2% agarose, 5ul 25Kb ladder per lane, mini 5x6cm gels were cast and run using the Accuris MyGel Mini System. SmartGlow™ PS and LD used to stain the DNA.



E5001-SDB SmartDoc 2.0 system with blue light illumination base. Filter: E5001-ORANGE



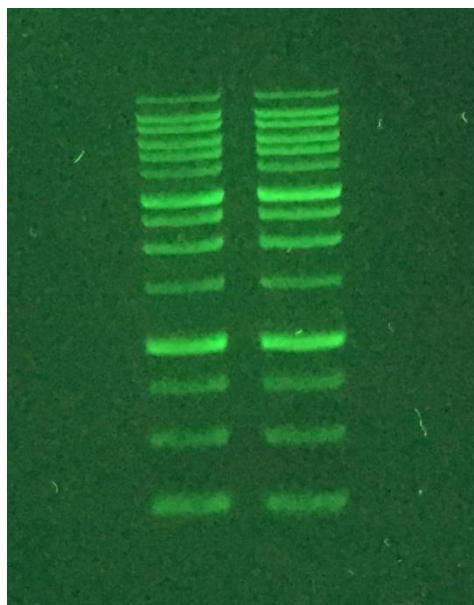
SmartGlow™ LD Loading Dye



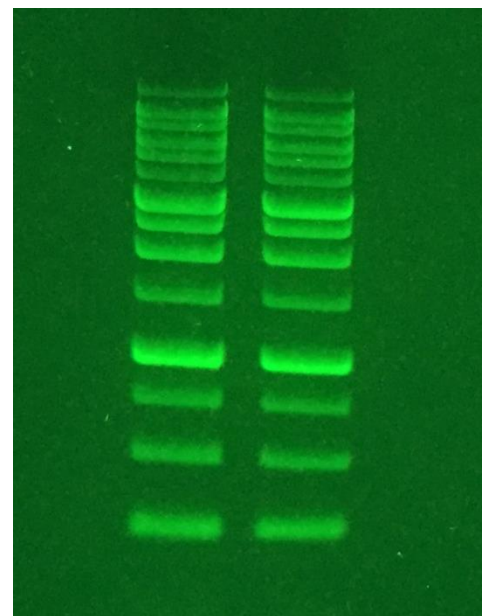
SmartGlow™ PS Pre Stain



E5001-SD SmartDoc 2.0 enclosure used on UV transilluminator. Filter: E5001-535



SmartGlow™ LD Loading Dye



SmartGlow™ PS Pre Stain