

# RWD Single Cell Suspension Dissociator Quick Start Guide

## Product Composition

DSC-400&DSC-800



### Heating jacket

Maintenance of tissue temperature.



### Tissue processing tube

It is used to hold the sample Tissue and the processed single-cell suspension or Tissue homogenate.

\* The tissue processing tubes of RWD are not available in the USA market



### Tissue Enzymatic Dissociation Kit

Add to Tissue Processing Tubes to digest tissue.

## Principle of Tissue Dissociation



Automated mechanical cutting



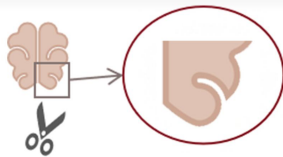
Enzyme Reagents Digestion

## Experimental Procedure



1

Sampling



2

Required part



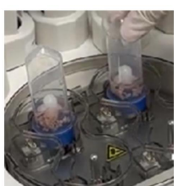
3

Pretreatment



4

Mix tissues and enzymes



5

Put on tubes



6

Put on heaters



7

Invoke program



8

Collect single cells

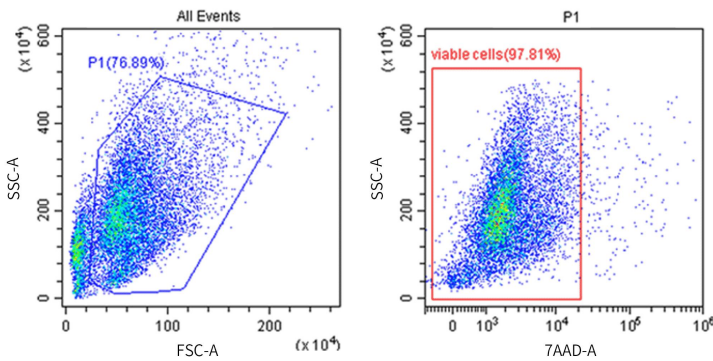


## Ordering Information

| Cat No.    | Product Name   | Types of tissues                        | Cell types   |
|------------|--|---|--|
| DHTE-5001  | High Activity Tumor Tissue Enzymatic Digestion Kit (Mouse)           | Mouse tumor                             | Tumor cells and immune cells   |
| DHNBE-5002 | High Activity Neonatal Brain Enzymatic Digestion Kit (Mouse and Rat) | P<7 Mouse and Rat brain                 | Neural stem cells, neurons, astrocytes, oligodendrocytes, microglia, endothelial cells |
| DHABE-5003 | High Activity Adult Brain Enzymatic Digestion Kit (Mouse and Rat)    | P≥7 Mouse and Rat brain                 | Neurons, astrocytes, oligodendrocytes, microglia, endothelial cells                    |
| DHGT-5004  | High Activity General Tissue Enzymatic Digestion Kit                 | Heart, Liver, Spleen, Lung, Kidney, etc | Non-parenchymal cells and immune cells   |
| DHTEH-2505 | High Activity Tumor Tissue Enzymatic Digestion Kit (Human)           | Human tumor                             | Tumor cells and immune cells   |
| DHDR-5006  | High Efficiency Debris Removal Kit                                   | Brain, Heart, Liver, etc                | /  |
| DHIE-5007  | High Activity Intestine Tissue Enzymatic Digestion Kit (Mouse)       | Mouse intestine lamina propria          | Intestinal lamina propria immune cells   |
| DHBTE-2508 | High Activity Brain Tumor Enzymatic Digestion Kit                    | Human and Mouse brain tumor             | Tumor cells and immune cells   |
| DHWSE-2509 | High Activity Whole Skin Enzymatic Digestion Kit (Mouse)             | Mouse whole skin                        | Keratinocytes, fibroblasts and langerhans cells  |
| DHAE-5010  | High Activity Adipose Tissue Enzymatic Digestion Kit (Mouse and Rat) | Mouse and Rat adipose                   | Immature adipocytes (Stromal Vascular Fraction cells)                                  |



## Reference Data and Image

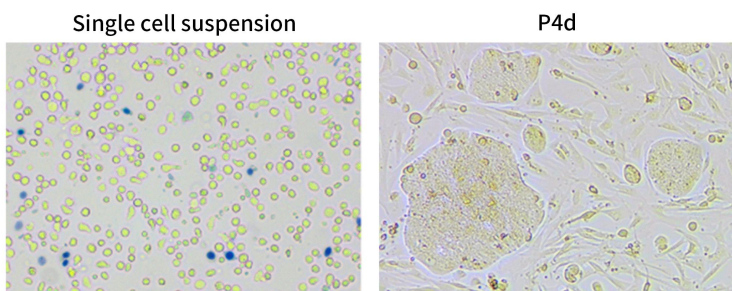
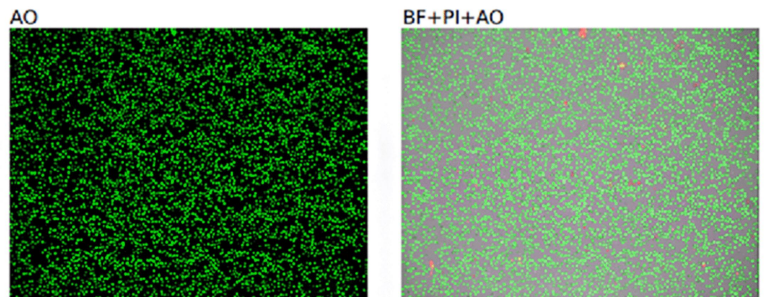


### Flow assay for cell viability

Mouse colon cancer(CT26.WT) single-cell suspensions were stained with 7AAD dye. Viable cells are shown. Cell viability can reach over 90%.

### Automated cell counter assay for cell viability

Mouse colon cancer(CT26.WT) single-cell suspension was analyzed, after AO/PI dye staining, green for live cells, red for dead cells.



### Primary culture

Human colon cancer (HT-29) single cells were primary cultured.