

HOW TO DOODLE WITH YARN

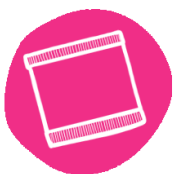
PACIFIC KNIT CO. 

[Doodle Series Patterns](#) are designed to be flexible. Knit exactly what you want, in an easy-to-follow modular structure. You can knit the same pattern again and again (and again) – never getting bored because can be completely different every time!



CHOOSE YOUR THEME

Pick the Doodle Chart Set that has the motifs you want! Or pick several chart expansions to mix-and-match!



CHOOSE YOUR PATTERN

Pick which pattern, style, or construction method you prefer. Every chart works with every pattern!



CHOOSE YOUR YARNS

Pick a skein or two for your main color and a handful of mini skeins for contrast colors – or create a stash buster!



START KNITTING

Pick your first chart and first colors and start knitting your pattern! You can change it up with every new motif!



STEP 1

CHOOSE YOUR THEME

Doodle patterns can have one theme – or many! Choose from hundreds of mix-and-match micro charts to make exactly what you want. All of the charts work together, so the opportunities are endless. **Pick up a Doodle Card Deck** or **add digital Chart Expansion Packs to grow your chart library!**

Most of the Doodles are arranged in “themes.” Check out the list below to decide where you want to start!

BASIC DOODLES

The Basic Doodles are a great starter set! They are simple, geometric motifs that are easy to memorize and have very short floats.

- Dots & Dashes
- Zig zags
- Plus signs & X's
- Diamonds

Basic Doodle Card Deck includes: [Basic Doodle](#), [Basic Doodle Expansion](#) (not yet available digitally)

SPRING DOODLES

The Spring Doodles are full of florals and hearts! They include both large and small motifs of flowers, vines, and insects that work well with pops of color.

- Butterflies, Bees, & Snails
- Winding Vines
- Tulips, Daisies, and other flowers
- Valentines Hearts

Spring Doodle Card Deck includes: [Valentines Doodle](#), [Floral Doodle](#)

AUTUMN DOODLES

The Autumn Doodles are both cozy fall and spooky Halloween! They are fun and festive and will get you ready for your next pumpkin spice latte!

- Lots of Fall Leaves
- Pumpkins & Acorns
- Witch's Hat & Caldron
- Umbrella & Rainboots
- Spiders, Bats, & Black Cats
- Candy Corn & Jack-o-Lanterns

Autumn Doodle Card Deck includes: [Autumn Doodle](#), [Autumn Expansion 1](#), [Autumn Expansion 2](#) (not yet available digitally)

WINTER DOODLES

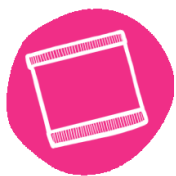
The Winter Doodles are full of festive cheer! They are a mix of sparkling snowflakes on cozy winter nights and fun and jolly holiday gifts.

- Snowflakes & Stars
- Pine Trees & Boughs
- Merry wrapping paper
- Snowmen & Reindeer
- Holly Berries (with bobbles!)
- Vintage Ski Sweaters

Winter Doodle Card Deck includes: [Holiday Doodle](#), [Winter Skies Expansion](#), [Holiday Expansion 1](#)

DESIGN YOUR OWN DOODLES

You can even **design your own Doodle micro charts** if you can't find exactly what you want! Just make sure they also fit into the 24-stitch repeat. Check out the [BLANK DOODLE CHARTS](#) (pg. 9) to learn more and get creative!



STEP 2

CHOOSE YOUR PATTERN

Doodle patterns are the background for your design! Choose from accessories like cowls, hats, and socks, or design your own shawl or sweater if you're feeling creative!

Start with the basic pattern shapes below. Use these pattern recipes to learn the basic construction and techniques behind your favorite shapes - AND how to modify them. Then you can start to branch out to design your own!

Check out the list of Doodle Patterns available to plug your charts into:

COWL PATTERNS

A Standard Cowl is a great place to start, because cowls don't require any shaping, increasing, or decreasing - simply cast on and start knitting! Want to learn a new skill? Try an infinity or reversible cowl to practice provisional cast on and grafting!

Cowl Patterns include:

- [Standard Cowl](#)
- [Infinity Cowl](#)
- [Reversible Cowl](#)

BONUS: ALL Doodle Decks come with instructions for the standard and infinity cowls!

HAT PATTERNS

Ready to go to the next level? Add a little crown decrease! The hat pattern comes with flexible brim options and two different crown decreases. Plus, hats make great gift projects because they are quick, fun, and portable!

Hat Patterns include:

- [Standard Beanie](#)

SOCK PATTERNS

The ultimate colorwork level – socks! Time to add some heel work (short rows) and wedge toe decreases. Not as scary as it sounds, I promise!

These socks make a great base pattern to plug and play ANY colorwork theme. Try Winter or Autumn socks for seasonal favorites!

Sock Patterns include:

- [Fingering Weight Socks](#)

TRY ADDING DOODLES TO OTHER PATTERNS

You can also **use ANY other pattern** that has an area available to add some colorwork! All you need to do is ensure you can incorporate a **24-stitch chart repeat**. Try adding some Doodles to your favorite sweater, shawl, blanket, scarfs, etc.



STEP 3

CHOOSE YOUR YARNS

Here's your chance to get creative with color! Head to your LYS or dive into your stash to find the perfect yarns for your new project. Don't have the full skeins you need? Don't worry! The best part is that you can really use anything you have (even tiny leftovers) because you can **use as little as 10g per color** to build what works for you!

Here are some of my favorite tips for choosing yarns & colors:

SOLIDS VS. VARIEGATED

Colorwork typically works **best when you use solids or semi-solid colors**, as it allows for the smaller stitches to really pop out.

While variegated yarns can cause some of the smaller colorwork sections to become blurry, if you want **to use that special variegated skein, I recommend using it as a contrast color** and picking a main color that is solid or neutral.

COLOR & CONTRAST

You can't really go wrong with color choice in Doodle patterns. Try a themed or coordinated palette, use just two colors for a minimalist look, or create a rainbow by using minis or leftovers – the opportunities are endless!

It's best to choose colors that you just love to knit with, whatever they are!
Plan out your [My Color Palette](#) on page 7!

Colorwork tend to show up best when you have **high contrast colors within a motif**. This means you will want to choose yarns that have a difference in underlying tones.

TIP: Use the black and white filter on your camera to quickly check the contrasts. You'll be looking for colors to be a different tone from each other.

YARN WEIGHT

While the majority of the Doodle patterns are **written for a DK or light worsted weight**, the 24-stitch chart repeat is versatile so all you need to do is make sure your **new stitch count is a multiple of 24-stitches** (i.e. a whole number when divided by 24).

Cast on # of stitches = cowl circumference ÷ gauge

Example for Fingering Weight (7 sts/in):

144 sts CO = 20.5 in cowl circumference ÷ 7 sts/in

144 sts cast on ÷ 24 st chart = 6 chart repeats

YARN FIBER

Use pretty much anything you can block – but usually it's recommended to use **wool or a wool blend for colorwork**. Although I encourage you to play with it and try other fibers or even hold double with mohair to make a fuzzy motif!

PERFECT WAY TO USE YOUR STASH & SCRAPS

You don't need any yarn kits or full skeins for these projects. This is the perfect pattern to try to **combine different weights, fibers, and dyes!** Because anything is possible, this will quickly become your new favorite stash buster!



STEP 4 START KNITTING

Let's Do(odle) This! Your unique Doodle pattern is created by combining micro charts together in different arrangements. Once you have your motifs, pattern, and yarn in hand, it's time to get started!

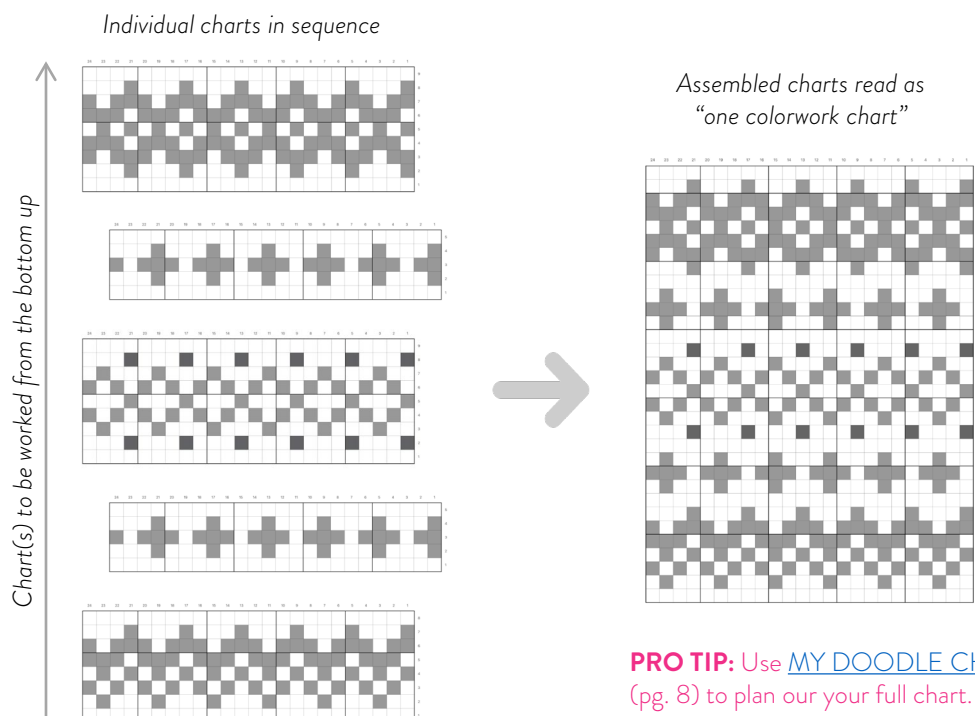
Pick your first chart and first colors and start knitting your pattern!

All of the [Doodle Pattern](#) charts work together, so get creative with how to use them. Use some or all of the charts in a theme, repeat the same chart in a simple motif, or try different color combinations to make it pop. **Shift the charts as necessary** (see example below) to align each consecutive chart as desired. Some Doodle patterns work well with motifs offset from the previous one. Most importantly – be creative!

TIPS FOR DOODLES:

- If helpful, print and cut out charts to rearrange, re-draw your charts on graph paper, or check out the **Doodle Card Deck** options on www.pacificknitco.com for a fully modular chart option
- Create the ultimate stash buster by changing yarns every few rows, or with every chart repeat
- Alternate dark and light in the MC and/or CC in consecutive charts for visual balance
- Always hold the CC dominant for each chart
- Add or remove MC rounds between charts to vary the final look

EXAMPLE: SEQUENCING CHARTS





PROJECT PLANNER

MY DOODLE PROJECT

Use the form below to help plan and record your project information! Remember, it's all about creating what you want so don't be scared to try something new (I've provided a place here for personal modifications!). What did you learn while working on this project? What would you change next time you knit it?

PROJECT INFORMATION

Pattern Name _____

Date Started _____

Date Finished _____

Made For _____

Finished Size _____

Tools/Notions _____

PATTERN NOTES

Things I Learned _____

Remember for Next Time... _____

Pattern Notes _____

DOODLE DESIGN

Doodle Theme _____

Charts to Use _____

Charts to Create Myself _____

PRO TIP: Use [MY DOODLE CHART](#) (pg. 8) to plan your full chart and [BLANK DOODLE CHARTS](#) (pg. 9) to design your own motifs.

YARN & COLOR

Yarn Quantity _____ yards/meters

Color Palette _____

Number of Colors Needed MC CC

Gauge sts x rows/rnds per
inch/cm

Needle(s) Main Fabric:
Ribbing/Edging:
Other:

PRO TIP: Use [MY COLOR PALETTE](#) (pg. 7) to design and plan your colors

MODIFICATIONS

Cast On _____

Bind Off _____

Height _____

Width _____

Circumference _____

Other _____

PATTERN RATING

Overall Pattern Rating ○ ○ ○ ○ ○

Difficulty Level ○ ○ ○ ○ ○

Enjoyment ○ ○ ○ ○ ○



WORKSHEET

BLANK DOODLE CHARTS

Use these blank charts to create your own doodles to use within your Doodle pattern! Each chart is 24-stitches wide, so they all work together. Charts can be as tall or short as you like! Time to get creative!

Chart Key  Knit in **darker** color  Knit in **lighter** color  Knit in **accent** color

24	23	22	21	20	19	18	17	16	15	14	13	12	11	10	9	8	7	6	5	4	3	2	1

24	23	22	21	20	19	18	17	16	15	14	13	12	11	10	9	8	7	6	5	4	3	2	1

24	23	22	21	20	19	18	17	16	15	14	13	12	11	10	9	8	7	6	5	4	3	2	1

24	23	22	21	20	19	18	17	16	15	14	13	12	11	10	9	8	7	6	5	4	3	2	1

24	23	22	21	20	19	18	17	16	15	14	13	12	11	10	9	8	7	6	5	4	3	2	1

24	23	22	21	20	19	18	17	16	15	14	13	12	11	10	9	8	7	6	5	4	3	2	1

24	23	22	21	20	19	18	17	16	15	14	13	12	11	10	9	8	7	6	5	4	3	2	1

24	23	22	21	20	19	18	17	16	15	14	13	12	11	10	9	8	7	6	5	4	3	2	1

24	23	22	21	20	19	18	17	16	15	14	13	12	11	10	9	8	7	6	5	4	3	2	1

24	23	22	21	20	19	18	17	16	15	14	13	12	11	10	9	8	7	6	5	4	3	2	1

24	23	22	21	20	19	18	17	16	15	14	13	12	11	10	9	8	7	6	5	4	3	2	1

24	23	22	21	20	19	18	17	16	15	14	13	12	11	10	9	8	7	6	5	4	3	2	1



CONNECT PACIFIC KNIT CO.



Many knitters want to make adjustments to a pattern, but might struggle with modifications or find the whole process intimidating.

When I first started knitting, I spent hours learning how to alter a pattern (and do the math!) to create exactly what I wanted. Now I want to encourage adventurous beginners to take on a new challenge within a structure.

Pacific Knit Co. patterns are designed to help you **customize your project within a structure** so you eliminate the guesswork, while building valuable skills you can use again and again.

Doodle Series Patterns include:

- Modular or mix-and-match charts
- Alternate yarn weights and/or gauges
- Flexible sizing (height and circumference)

Each Doodle pattern is filled with **opportunities for customization in colorwork and construction, built right in**, so you don't have to struggle - just choose exactly the right option for you!

CONNECT WITH ME



www.pacificknitco.com



[@pacificknitco](https://www.instagram.com/pacificknitco)



[PacificKnitCo](https://www.facebook.com/PacificKnitCo)



Jamie@pacificknitco.com

RESOURCES + TUTORIALS

COLORWORK TIPS & TRICKS

Knitting Colorwork with 2 Hands:

https://www.instagram.com/reel/CXSoRrHPcSR/?utm_source=ig_web_copy_link&igshid=MzRIODBiNWFIZA==

Catching MC Floats:

https://www.instagram.com/reel/CWFLBU7tFLd/?utm_source=ig_web_copy_link

Catching CC Floats:

https://www.instagram.com/reel/CW9Z5ZPjPQO/?utm_source=ig_web_copy_link

Weaving in Ends as you Go:

https://www.instagram.com/reel/Ce2j60mJrK4/?utm_source=ig_web_copy_link

WORKING WITH DOODLE CHARTS

Arranging Your Doodle Charts:

https://www.instagram.com/reel/CnZ199Fpzhh/?utm_source=ig_web_copy_link

PROVISIONAL CAST ON

Provisional Cast on – Crochet Chain:

https://www.instagram.com/reel/CZp0Hu3MHI5/?utm_source=ig_web_copy_link&igshid=MzRIODBiNWFIZA==

GRAFTING / SEAMING

How to Graft an Infinity Cowl:

https://www.instagram.com/reel/CrrFiQPJC42/?utm_source=ig_web_copy_link&igshid=MzRIODBiNWFIZA==

How to Graft a Reversible Cowl:

https://www.instagram.com/reel/Cs16bYfMfYT/?utm_source=ig_web_copy_link&igshid=MzRIODBiNWFIZA==

Tips for a Faster Grafting Stitch:

https://www.instagram.com/reel/CfDS8gauLyB/?utm_source=ig_web_copy_link&igshid=MzRIODBiNWFIZA==