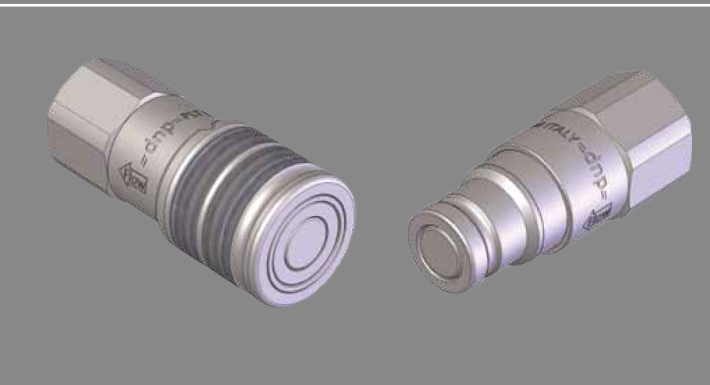
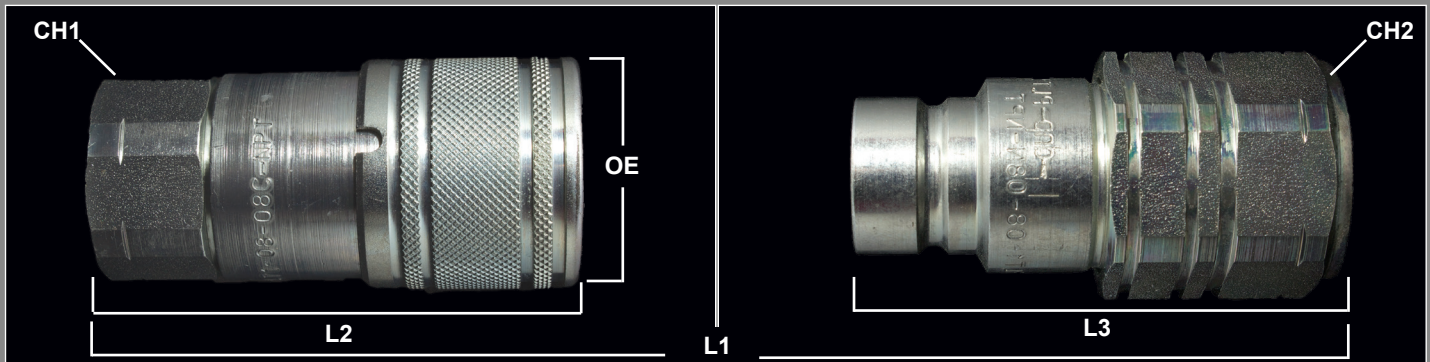


FF-GP SERIES QUICK COUPLINGS (PLT1)

ISO 16028 - Flush Face - General Purpose - Push to Connect - Carbon Steel

Sizes: 1/4" thru 2"



Features and Applications

- Push to connect
- Connection under pressure not allowed
- Sleeve lock device
- Locking radial balls
- FF-GP series is ideal for markets where flat face, non-spill couplings are a must.
- Skid steers, skid steer attachments, agricultural, construction, forestry, oil & gas and more.

MATERIALS

Body: Carbon Steel
 Finishing: ZN-Fe (CR111)
 Seals: NBR standard seals
 Threads: NPT & BSP

MAJOR INTERCHANGES

Parker FE Faster 2FFI
 Tomco FE Aeroquip FD89
 Perfecting HT Snap Tite 74
 Stucchi A & FIRG

Key Note:

- Color Safe System options available



DIMENSIONAL & PRESSURE RATING DATA

Body Size	CH1	CH2	OE	L1	L2	L3	Optimal Flow Rate (GPM)	Max Flow Rate (GPM)	Max Working (PSI)
04	.87	.87	1.10	4.00	2.30	2.11	3.17	6.34	4,630
06	1.06	1.06	1.26	4.57	2.66	2.50	6.08	12.15	3,675
08	1.26	1.26	1.50	5.39	3.31	2.99	12	23.78	3,675
12	1.81	1.61	1.89	6.20	3.70	3.39	28	52.83	3,675
16	1.97	1.97	2.17	6.97	4.31	3.54	50	73.97	3,675
24	2.76	2.76	3.11	8.27	4.67	4.70	100	184.92	3,675
32	3.15	3.15	4.06	11.42	5.81	6.81	200	264.17	3,675

units: inches

ORDERING INFORMATION

QUICK COUPLING PART NUMBERING SYSTEM:

FF-GP - 08 - 08 - C - NPT

