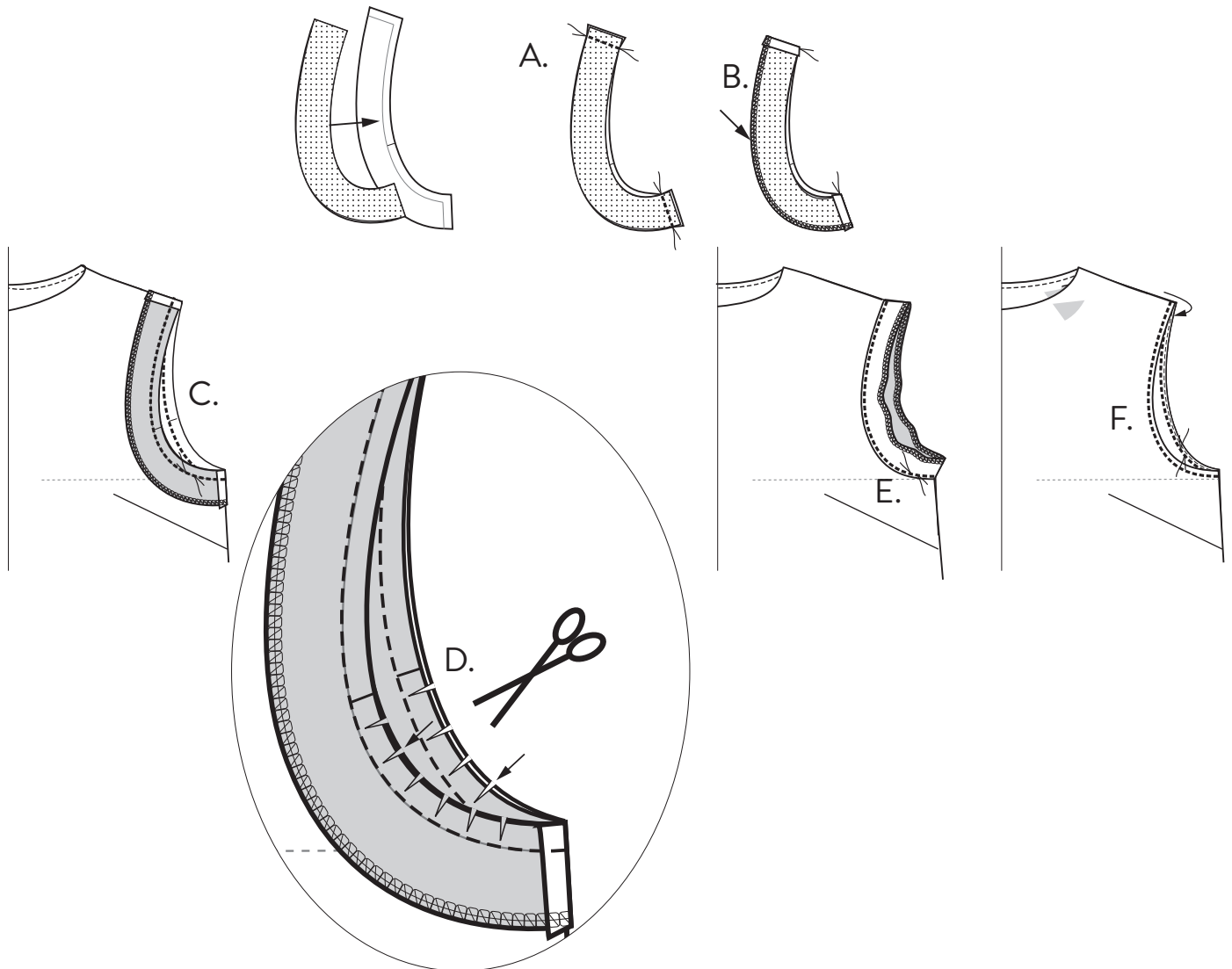


MULTI-SLEEVE MIDI DRESS - sleeveless version



Fusible interfacing: Front armhole facing including seam allowance, 2 pieces, and Back armhole facing including seam allowance, 2 pieces. Attach to the wrong side of fabric by ironing with two dots heat. Use a thin protective cloth to spare the iron's surface.

A. Place the front and back armhole facings with right sides together, sew the short sides with 1 cm seam allowance. Split seam allowance and press.

B. Overlock the outer edge of facing.

C. Place the facing into the armhole, match the notches. Stitch with 1 cm seam allowance.

D. Make some 8 mm cuts at the armhole curved lines, front and back.

E. Flip the facing out and make a 2 mm understitch on the facing.

F. Fold the facing towards the inside of the dress. Press and tack or pin the edge. Make a 2-3 mm topstitch from the edge.