

DINOSAURS & BLUE LAVA VOLCANOES

TIMELESS WONDER



*"Sometimes you gotta get through your fear
to see the beauty on the other side."*

POPPA, THE GOOD DINOSAUR



LET'S GO WONDER AT



Kawah Ijen Volcano
East Java, INDONESIA

The best place to see blue lava is at Indonesia's Kawah Ijen volcano. The Ijen volcano complex has some of the highest levels of sulfur in the world. Unlike regular volcanoes whose bright red lava is visible in the day, Kawah Ijen's blue burning flames can only be seen at night.

DISCOVER: DINOSAURS

DINOSAURS ARE A GROUP OF REPTILES

that lived on Earth for about 245 million years.

In 1842, the English naturalist Sir Richard Owen coined the term

Dinosauria, derived from the Greek deinos, meaning

“fearfully great,” and sauros, meaning “lizard.”

However, dinosaurs are reptiles and not lizards.

DINOSAUR FOSSILS HAVE BEEN FOUND

on all seven continents, and all non-avian dinosaurs

went extinct about 66 million years ago.

DINOSAUR REMAINS WERE FIRST DISCOVERED

in North America on the upper Missouri River

in 1854 by American geologist Ferdinand Vandiveer Hayden.

THE DINOSAUR WITH THE LONGEST NAME

is the 23-letter Micropachycephalosaurus

(“Small, thick-headed reptile”), which was found in China.

WONDER: BLUE LAVA

THE WORD “VOLCANO”

comes from the Roman name “Vulcan” - the Roman god of fire. Volcanoes can be found on land, the ocean floor and under ice caps.

LAVA CAN REACH 1,250°C

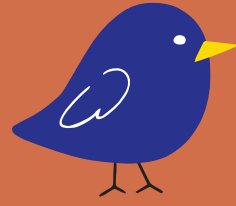
and has the potential to burn everything in its path. If you used a glass thermometer to take the temperature it would melt.

WHAT MAKES LAVA BLUE

is the process of burning sulfur. This process creates the color violet, which can vary in hue as a combination of purple and blue. In the case of Kawah Ijen, when the sulfur and the molten rock come into contact, the combination turns the lava an icy blue.

THE “RING OF FIRE”

is a 40,000 km horseshoe-shaped area of the Pacific Ocean - home to 90% of all volcanoes on the Earth.



Rediscover Wonder Together

Q: Which is the largest carnivorous (meat-eating) dinosaur?

Q: Why are most carnivorous dinosaurs bipeds?

Q: Dinosaur or jellyfish? Who is the oldest and has been around the longest?

Q: Is blue lava hotter than red lava?

Q: What lies in the crate of the blue lava mountain Kawah Ijen?

Q: What is the viscosity of lava?

Visit www.jaqjaqbird.com to explore answers and learn more about Dinosaurs & Blue Lava Volcanoes.



TIMELESS WONDER