

THERMOSTATIC SHOWER Series INSTALLATION GUIDE



AB910DX3W SERIES (D=1,2,3,6,9)



AB910DX3C SERIES (D=1,2,3,6,9)



AB910DH4C20WR (D=1,2,3)



AB9622X4 SERIES

CONTENT

1.INSTALLATION CONDITION	P1
2.MODEL:AB910DX3W series (D=1,2,3,6,9) SHOWER SET INSTALLATION	
PRODUCT LIST	P2
ESSENTIAL DIMENSIONS	P5
ACCOUNT FOR EMBED PIPE AND INSTALLATION DEPTH	P5
INSTALLATION DEPTH OF MAIN BODY	P8
MAIN BODY CONNECTING PIPE SCHEMATIC DIAGRAM	P8
MAIN BODY VALVE INSTALLATION	P9
INSTALLATION OF BODY JET	P11
INSTALLATION OF RAIN SHOWER HEAD & SHOWER ARM	P11
LIFING ROD INSTALLATION	P15
3.MODEL:AB910DX3C series (D=1,2,3,6,9) SHOWER SET INSTALLATION	
PRODUCT LIST	P2
ESSENTIAL DIMENSIONS	P5
ACCOUNT FOR EMBED PIPE AND INSTALLATION DEPTH	P5
INSTALLATION DEPTH OF MAIN BODY	P8
MAIN BODY CONNECTING PIPE SCHEMATIC DIAGRAM	P8
MAIN BODY VALVE INSTALLATION	P9
INSTALLATION OF BODY JET	P11
INSTALLATION OF RAIN SHOWER HEAD & SHOWER ARM	P11
LIFING ROD INSTALLATION	P15
4. MODEL:AB910DH4C20WR (D=1,2,3) SHOWER SET INSTALLATION	
PRODUCT LIST	P3
ESSENTIAL DIMENSIONS	P6
INSTALLATION DEPTH OF SHOWER CONNECTOR & BODY JET	P6
INSTALLATION DEPTH OF MAIN BODY	P9
MAIN BODY CONNECTING PIPE SCHEMATIC DIAGRAM	P10
MAIN BODY VALVE INSTALLATION	P10
INSTALLATION OF BODY JET	P11
SHOWER HEAD INSTALLATION	P12
LIFING ROD INSTALLATION	P15
5. MODEL:AB9622X4 series SHOWER SET INSTALLATION	
PRODUCT LIST	P4
ESSENTIAL DIMENSIONS	P7
INSTALLATION DEPTH OF SHOWER CONNECTOR & BODY JET	P7
INSTALLATION DEPTH OF MAIN BODY	P9
MAIN BODY CONNECTING PIPE SCHEMATIC DIAGRAM	P10
MAIN BODY VALVE INSTALLATION	P10
INSTALLATION OF BODY JET	P11
22IN SHOWER HEAD INSTALLATION	P14
LIFING ROD INSTALLATION	P15

◆ INSTALLATION CONDITION



1. Refer to the 《Standard Part List》 when unpacking , check all parts available .

2. Do not disassemble mixer body by yourself.

3. Connect inlet hoses to supply valves.

4. Make sure inlet pipes and supply valves have been installed and cleaned, also ensure no impurities in pipeline.

5. After installation , check all joints for leakages.

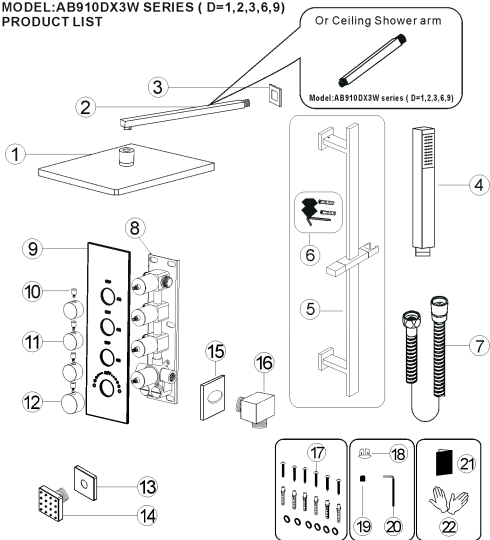
6. Suggest don't fit the faucet in the severely corrosive environments.



YOU MAY NEED:

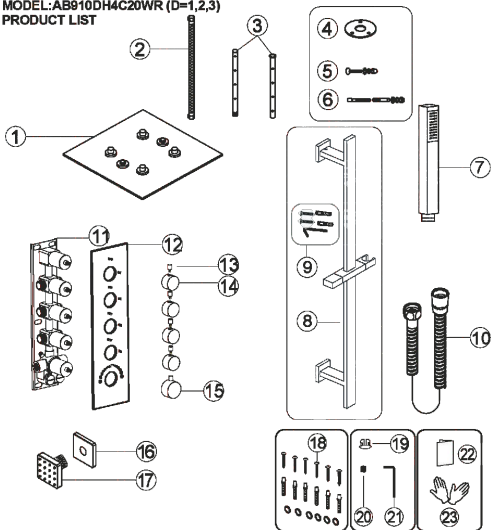


◆ MODEL:AB910DX3W SERIES (D=1,2,3,6,9)
PRODUCT LIST



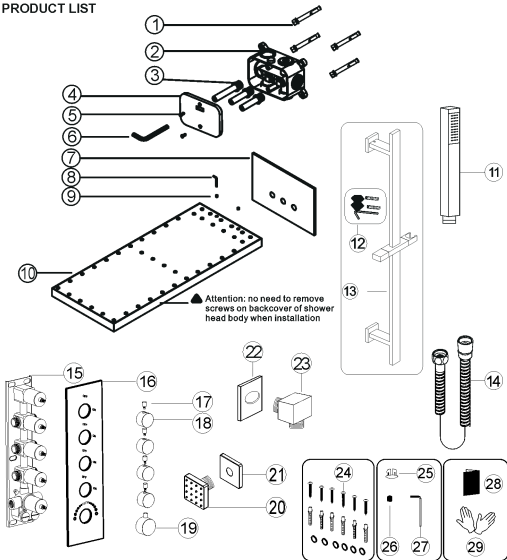
No.	Part name	Qty	No.	Part name	Qty
1	Shower head	1	12	Handle	1
2	Shower arm	1	13	Body jet cup	6
3	Shower arm cup	1	14	Body jet	6
4	Shower hand	1	15	Cup	1
5	Lifting rod	1	16	Connector	1
6	Lifting rod parts	2	17	Main body spare parts	1
7	Shower hose	1	18	Handle cup	1
8	Main body	1	19	Screw	1
9	Panel	1	20	Wrench	1
10	Water diverter rod	3	21	Instruction manual	1
11	Water diverter	3	22	Gloves	2

◆ MODEL: AB910DH4C20WR (D=1,2,3)
PRODUCT LIST



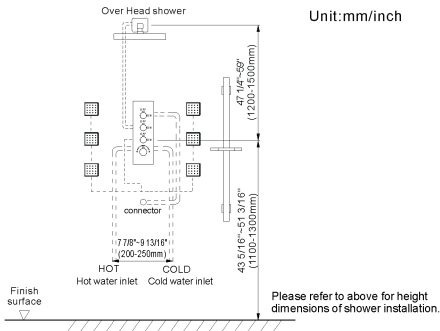
No.	Part name	Qty	No.	Part name	Qty
1	Shower head	1	13	Water diverter rod	3
2	Shower head Hose	2	14	Water diverter	3
3	Fixed rod	4	15	Handle	1
4	Flange plate	4	16	Body jet cup	3
5	Screw	4	17	Body jet	3
6	Set screw	12	18	Main body gasket parts	6
7	Shower hand	1	19	Handle cup	1
8	Lifting rod	1	20	Screw	1
9	Lifting rod parts	2	21	Wrench	1
10	Shower hose	1	22	Instruction manual	1
11	Main body	1	23	Gloves	2
12	Panel	1			

◆ MODEL :AB9622X4 SERIES
PRODUCT LIST

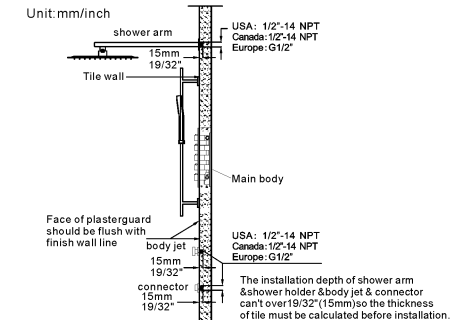


No.	Part name	Qty	No.	Part name	Qty	No.	Part name	Qty
1	Expansion screws	1	11	Shower hand	1	21	Body jet cup	6
2	Inwall box	2	12	Lifting rod	1	22	Cup	3
3	Water inlet	1	13	Lifting rod parts	2	23	Connector	1
4	Cover	8	14	Shower hose	1	24	Main body gasket parts	6
5	Screw	1	15	Main body	1	25	Handle cup	1
6	S8 Allen key	1	16	Panel	1	26	Handle screw	1
7	Flange	1	17	Water diverter rod	4	27	Handle Wrench	1
8	Allen key 2.5	1	18	Water diverter	4	28	Instruction manual	1
9	M4 screw	2	19	Handle	1	29	Gloves	2
10	Shower head body	1	20	Body jet	6			

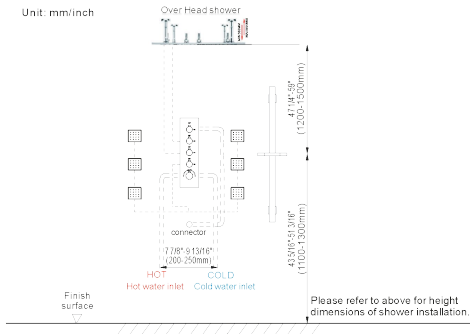
◆ **MODEL AB910DX3W SERIES (D=1,2,3,6,9) & AB910DX3C SERIES (D=1,2,3,6,9)**
ESSENTIAL DIMENSIONS



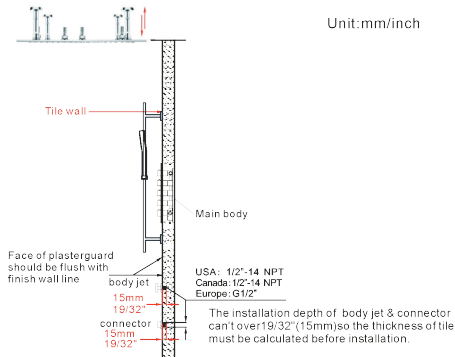
◆ **MODEL AB910DX3W SERIES (D=1,2,3,6,9) & AB910DX3C SERIES (D=1,2,3,6,9)**
ACCOUNT FOR EMBED PIPE AND INSTALLATION DEPTH



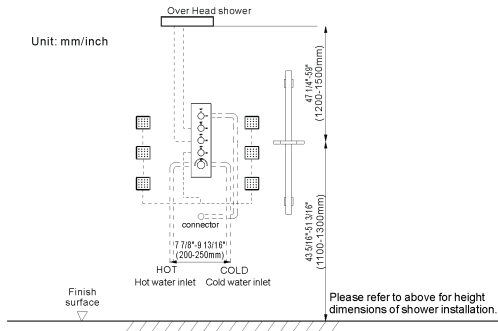
◆ **MODEL AB910DH4C20WR (D=1,2,3)**
ESSENTIAL DIMENSIONS



◆ **MODEL AB910DH4C20WR (D=1,2,3)**
INSTALLATION DEPTH OF SHOWER CONNECTOR & BODY JET

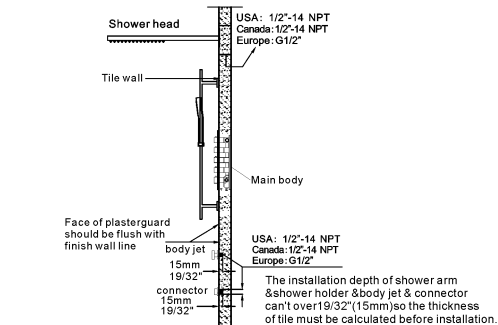


◆ **MODEL AB9622X4 SERIES**
ESSENTIAL DIMENSIONS



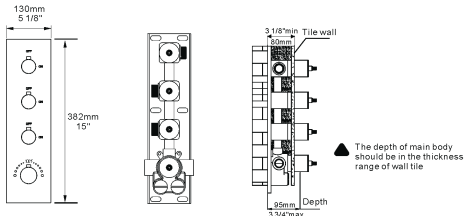
◆ **MODEL AB9622X4 SERIES**
INSTALLATION DEPTH OF SHOWER CONNECTOR & BODY JET

Unit: mm/inch



◆ **MODEL AB910DX3W SERIES (D=1,2,3,6,9) & AB910DX3C SERIES (D=1,2,3,6,9)**
INSTALLATION DEPTH OF MAIN BODY

Unit:mm/inch

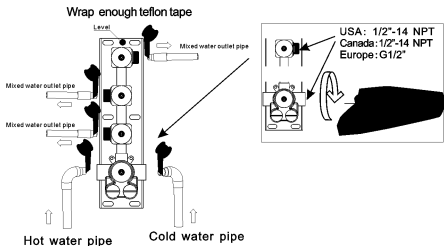


- 1: Including the thickness of ceramic tile is less than or equal to the thickness of valve 3 3/4" (95mm), so the thickness of tile must be calculated before installation.
- 2: Installation Main body depth not less than 3 1/8"(80mm)min and not more than 3 3/4" (95mm) Max. Otherwise, the panel cannot be installed.

◆ **MODEL AB910DX3W SERIES (D=1,2,3,6,9) & AB910DX3C SERIES (D=1,2,3,6,9)**
MAIN BODY CONNECTING PIPE SCHEMATIC DIAGRAM

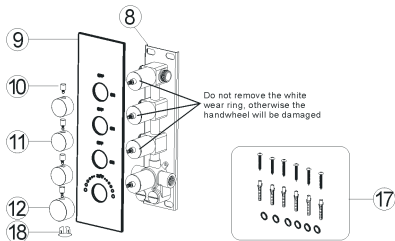


Warning: must install hot water and cold water inlet strictly as instructions.



1. As shown in the figure, the inlet and outlet pipes are pre-buried, pay attention to the correct direction of installing the pre-buried main body, and make sure that the mark level on the top of the installation box is facing upward.
2. Install the hot and cold water inlet pipes, Shower head and hand shower holder body jet pipes. Turn on the water source to test whether the left and right inlet pipes are tightly connected without leakage. After the test, adjust the flow switch to be on to test whether the mixed outlet pipe. The connection is tight and there is no leakage.

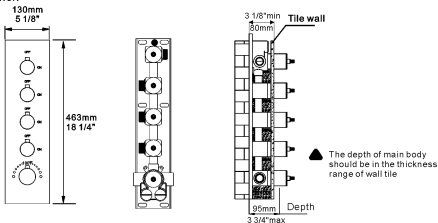
◆ **MODEL AB910DX3W SERIES (D=1,2,3,6,9) & AB910DX3C SERIES (D=1,2,3,6,9)**
MAIN BODY VALVE INSTALLATION



Use ⑰ Valve gasket spare parts and to fixed ⑤ Main body on the wall and then install ⑨ Panel ⑫ Hand ⑬ Hand cup and Hand screw ⑪ Water diverter! ⑩ Water diverter! rod in the correct order.


◆ **MODEL AB910DH4C20WR (D=1, 2, 3) & AB9622X4 SERIES**
INSTALLATION DEPTH OF MAIN BODY

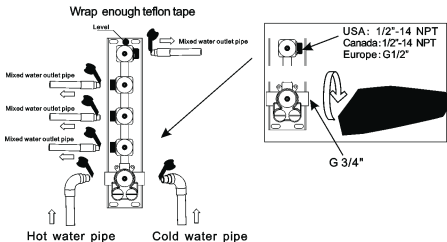
Unit: mm/inch



- 1: Including the thickness of ceramic tile is less than or equal to the thickness of valve 3 3/4"(95mm), so the thickness of tile must be calculated before installation.
- 2: Installation Main body depth not less than 3 1/8"(80mm)min and not more than 3 3/4" (95mm) Max, Otherwise, the panel cannot be installed.
- 3: The hole size of the main body after tiling is smaller than the size of the panel.

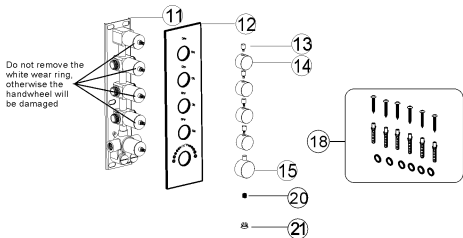
◆ MODEL AB910DH4C20WR (D=1,2,3) & AB9622X4 SERIES
MAIN BODY CONNECTING PIPE SCHEMATIC DIAGRAM

 Warning: must install hot water and cold water inlet strictly as instructions.



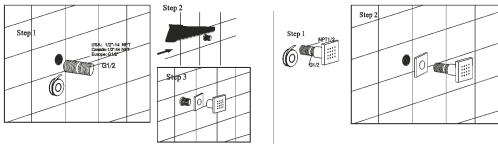
1. As shown in the figure, the inlet and outlet pipes are pre-buried, pay attention to the correct direction of installing the pre-buried main body, and make sure that the mark level on the top of the installation box is facing upward.
2. Install the hot and cold water inlet pipes, Shower head and hand shower holder body jet pipes. Turn on the water source to test whether the left and right inlet pipes are tightly connected without leakage. After the test, adjust the flow switch to be on to test whether the mixed outlet pipe. The connection is tight and there is no leakage.

◆ MODEL AB910DH4C20WR (D=1,2,3) & AB9622X4 SERIES
MAIN BODY VALVE INSTALLATION



Use 18 Valve gasket spare parts and to fixed 11 Main body on the wall and then install 12 Panel 13 Hand 14 Hand cup and 20 Hand screw 16 Water diverter 17 Water diverter rod in the correct order.

◆ **MODEL AB910DX3W SERIES (D=1,2,3,6,9) & AB910DX3C SERIES (D=1,2,3,6,9) & AB910DH4C20WR (D=1,2,3) & AB9622X4 SERIES** INSTALLATION OF BODY JET

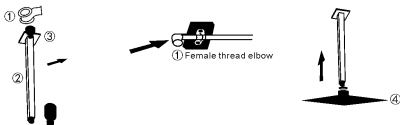


Step 1. Wrap the threaded pipe of NPT (G1/2") with Teflon tape and screw it into the wall.

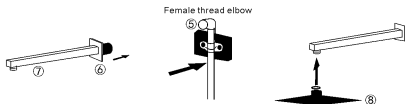
Step 2. Cut off excess part with a saw.

Step 3. Put on the decoration cap, then screw the massage shower in.

◆ **MODEL AB910DX3W SERIES (D=1,2,3,6,9) & AB910DX3C SERIES (D=1,2,3,6,9)** INSTALLATION OF RAIN SHOWER HEAD& SHOWER ARM

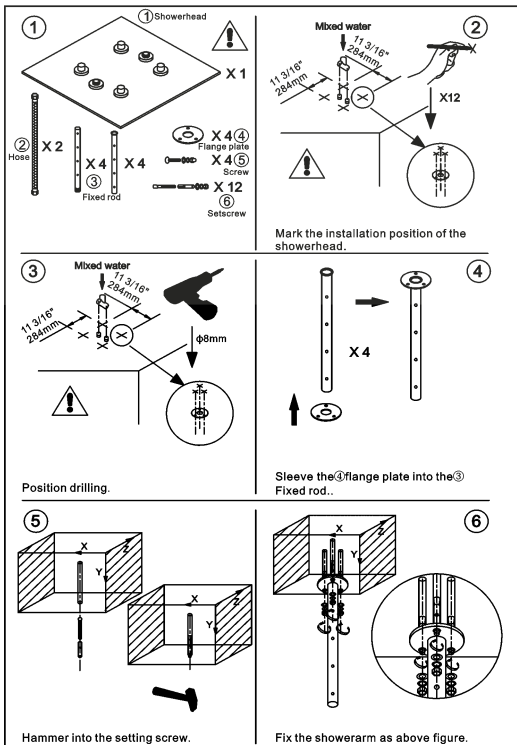


Connect top outlet ① to shower arm ② with proper fittings. To prevent damage, to finish on shower arm, insert wall end of shower arm into shower flange ③ before screwing arm into riser connection. Thread showerhead ④ onto shower arm. Apply tape to pipe threads on both ends. Do not overtighten showerhead. The showerhead is 360° swivel connection.

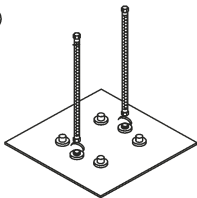


Connect top outlet ⑤ to shower arm ⑦ with proper fittings. To prevent damage, to finish on shower arm, insert wall end of shower arm into shower flange ⑥ before screwing arm into riser connection. Thread showerhead ⑧ onto shower arm. Apply tape to pipe threads on both ends. Do not overtighten showerhead. The showerhead is 360° swivel connection.

◆ MODEL: AB910DH4C20WR (D=1,2,3)
SHOWER HEAD INSTALLATION

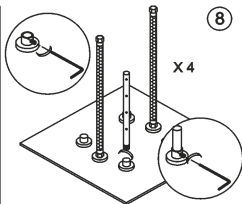


7

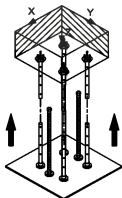


Connect the ②Hose inlet water pipe.

8

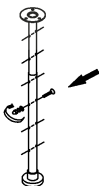


9

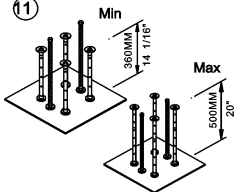


Install the showerhead according to the left figure, fix the showerarm with screw according to the right figure.

10

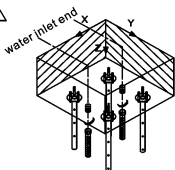


11



Adjust the showerhead height (refer to Figure ⑩ after confirming the height).

12

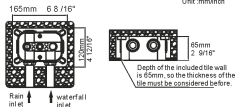


The water inlet end of two-function showerhead is connected with the control valve.

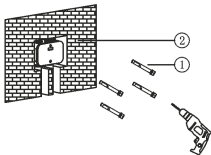
◆ MODEL:AB9622X4 SERIES
22IN SHOWER HEAD INSTALLATION

1. Digging wall according to following size, and connect rain and waterfall inlet correctly

Unit: mm/inch

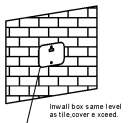


2. Lock Inwall box refer to level meter guarantee horizontal level and test leaking for 24 hours.

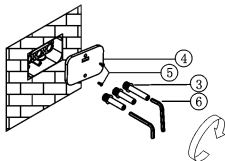


▲ If the Inwall box is embedded too deep, the shower head will not be installed properly and it will cause water leakage and sag problems. Please pay special attention to the installation depth.

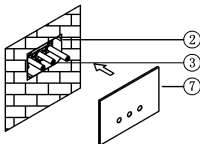
3. Remain inwall box in same level as wall after seal the tile and cover exceed wall.



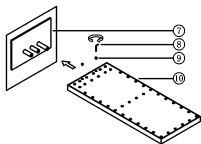
4. Install Shower head body. First remove box cover and plug, screw three water inlets into inwall box with S8 Allen Key. Longest role is support.



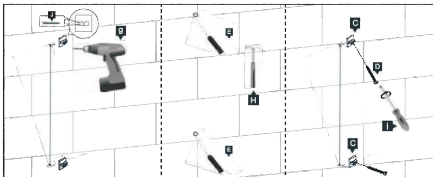
5. Install Flange as picture. Caution: do setp 4-5-6 to test horizontal and vertical position of shower head before wall seal to avoid any trouble of repair after wall seal.



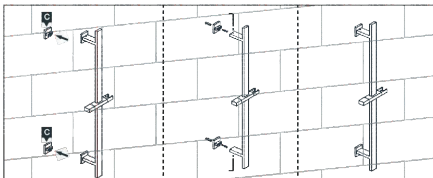
6. Push shower head body into according water inlets, and tighten shower body by M4 screw with Allen key 2.5.



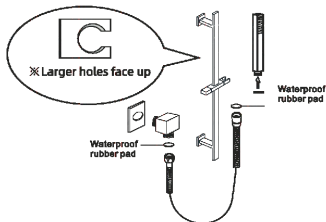
◆ MODEL AB910DX3W SERIES (D=1,2,3,6,9) & AB910DX3C SERIES (D=1,2,3,6,9) & AB910DH4C20WR (D=1,2,3) & AB9622X4 SERIES LIFING ROD INSTALLATION



1. Mark the punch position with a pen, drill holes with a 6mm electric drill, knock the pellets in. Lastly, Place the base and screw in the screws.



2. Put the Shower Elevator Rack into the base, then Tighten the screw, done.



Step1. The connector to be wrapped with teflon tape, Screw the thread into the water pipe inside the wall.

Step2. Install the rubber pad on the shower hose and connect it with the connector.

◆ CARE AND MAINTENANCE

In order to keep the mixer surface bright , please clean the mixer regularly.

Rinse faucet with clean water and wipe with soft cotton cloth.

Avoid using cleaning powder , harsh cleaning chemicals, brushes, and cloth with coarse surface to prevent scratching and corrosion.

Do not use acid cleaner to clean the faucet as it may cause surface corrosion of the faucet. If the faucet comes into contact with harmful acid substances, please rinse it with water immediately.



◆ IF A LARGE-SCALE CLEAN-UP IS NECESSARY, FOLLOW THESE PROCEDURES

1: Use clean water and soft cloth to remove dirt on the surface as much as possible.

2: Use one of the following cleaners to remove dirt on the surface

Mild liquid cleaner.

Colorless glass cleaner, powder cleaner which does not have abrasive function and can be dissolved completely.

Polish liquid which does not have abrasive function.

3: After cleaning, remove the cleansing agent with clean water completely and wipe with soft cotton cloth.